



x
Glen 123
For the Year 1769

A C O L L E C T I O N

of

S C O T S R E E L S

or

C O U N T R Y D A N C E S

With a BASS for the VIOLINCELLO or HARPSICHORD

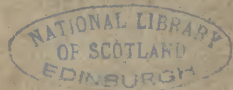
And proper Directions to each Dance.

Price 1th

L O N D O N Printed and sold by R: BREMNER at the Harp and Hautboy

Opposite Somerfet House in the S T R A N D.

Where may be had Vol. first Price 5^{sh}



THE GLEN COLLECTION
OF SCOTTISH MUSIC

Presented by Lady Dorothea Ruggles-
Brise to the National Library of Scotland,
in memory of her brother, Major Lord
George Stewart Murray, Black Watch,
killed in action in France in 1914.

28th January 1927.

For the Year 1769

A C O L L E C T I O N

of

S C O T S R E E L S

or

C O U N T R Y D A N C E S

With a BASS for the VIOLINCELLO or HARPSICHORD

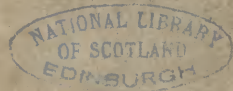
And proper Directions to each Dance.

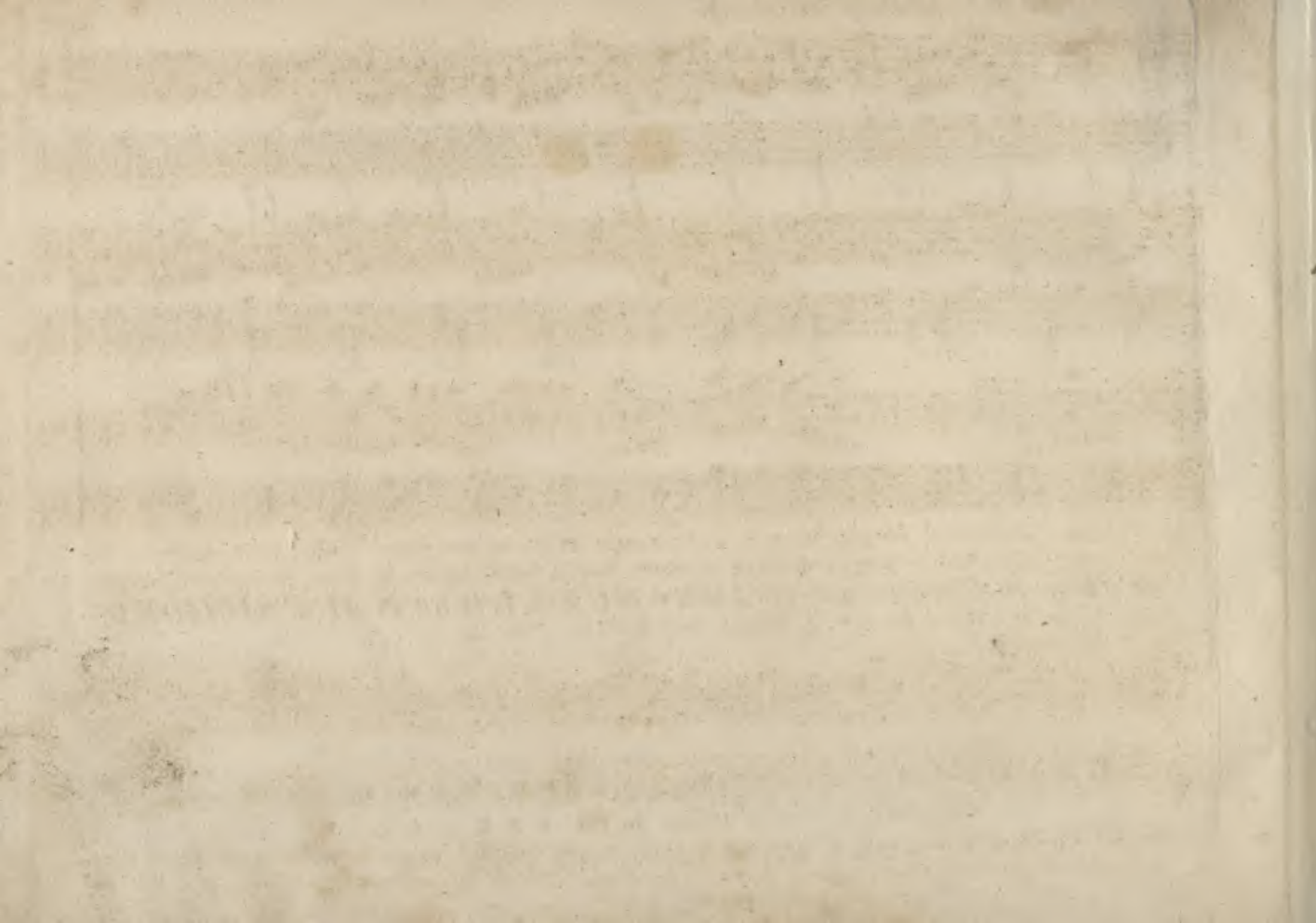
Price 1^{sh}

L O N D O N Printed and sold by R: B R E M N E R at the Harp and Hautboy

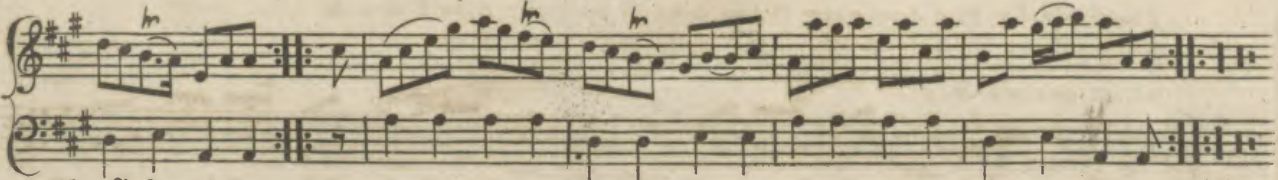
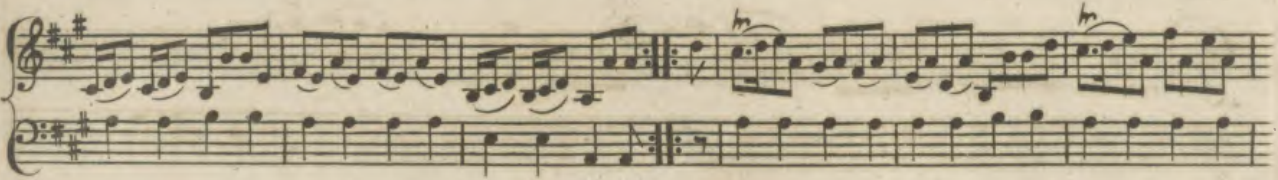
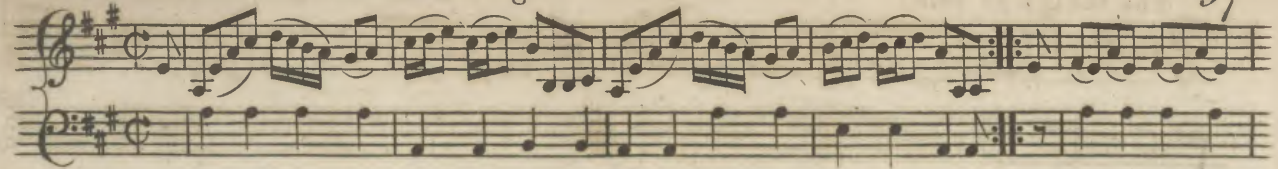
Opposite Somerfet House in the S T R A N D.

Where may be had Vol. first Price 5^{sh}

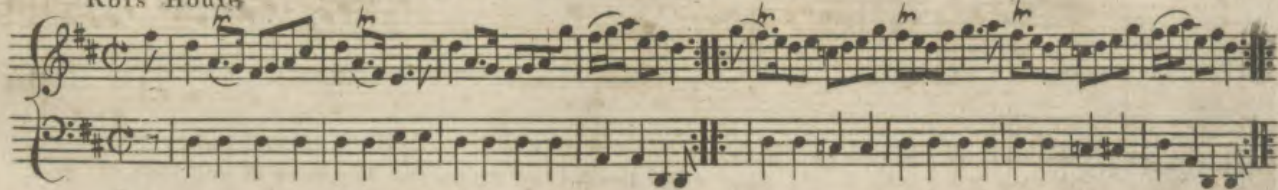




The New Town of Edinburgh



The first and Second Couple foot it and change sides ♩ the same back again ♩ foot it all four Right hands across ♪ foot it Left hands back again ♪ lead down two couple foot it to your Partner ♩ lead up to the Top foot it and cast off ♩ hands Round four with the third couple ♩ Right and Left at Top ♩
 Rofs House



The 1st Cu: foot it and cast of two Cu. ♩ foot it and cast up again ♩ cross over two Cu. ♩ lead up to the Top and cast off ♩ Set corners and turn ♩ lead outfides and turn ♩

The Whigs of Fife.

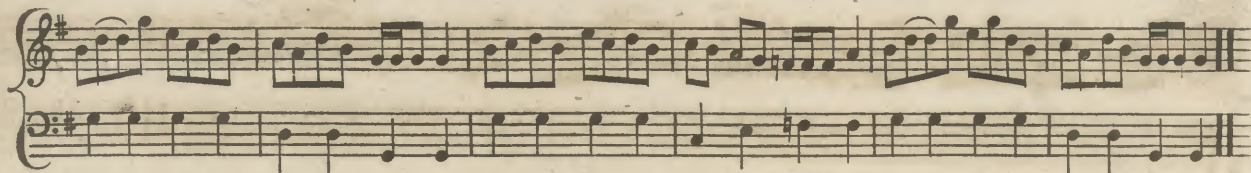
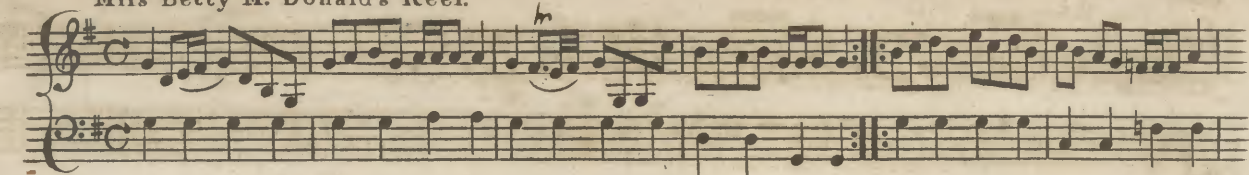
Musical score for 'The Whigs of Fife'. It consists of two systems of music. Each system has a treble clef staff and a bass clef staff. The first system features a melody in the treble staff with eighth and sixteenth notes, and a bass line in the bass staff with quarter notes. The second system continues the melody and bass line, ending with a double bar line and repeat signs.

The first Cu: Hey contrary fides ♩ then on your own fides ♩ lead down two Couple foot it ♩ lead up to the Top and cast off ♩

Miss Cahoon's Reel.

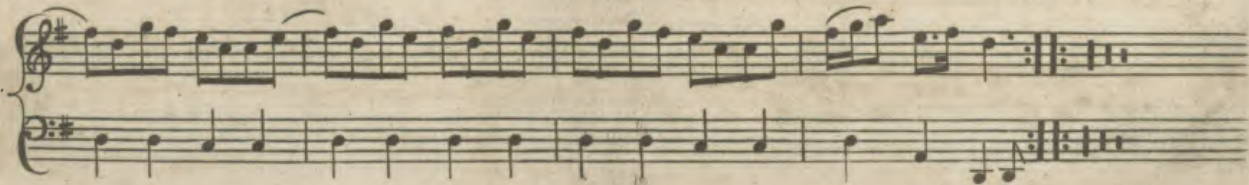
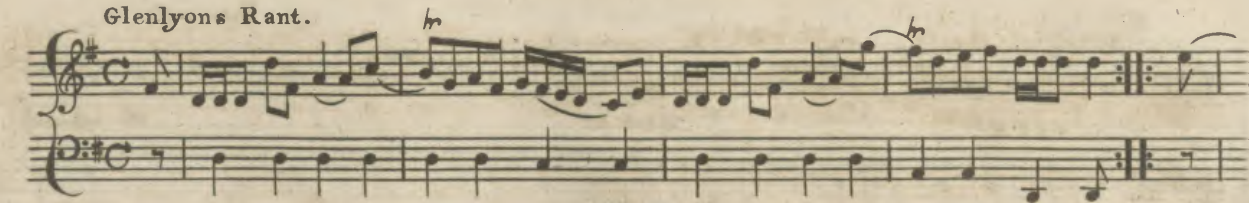
Musical score for 'Miss Cahoon's Reel'. It consists of two systems of music. Each system has a treble clef staff and a bass clef staff. The first system is in 6/8 time and features a melody in the treble staff with eighth and sixteenth notes, and a bass line in the bass staff with quarter notes. The second system continues the melody and bass line, ending with a double bar line and repeat signs.

The 1.st Cu: cast of one Cu: hands round four with the 3.^d Cu: ♩ cast up and hands round four with the 2.^d Cu: ♩ cross over two Cu: ♩ lead up to the Top, foot it and cast off ♩ turn corners with your right hands, and turn your Partner with your left ♩ The other corners the same ♩ Hey contrary fides ♩ then on your own fides ♩

Miss Betty M^c Donald's Reel.

The first and 2^d Cu: foot it right and left half round $\hat{=}$ the same back again $\hat{=}$ lead down two couple foot it lead up to the Top and cast off $\hat{=}$

Glenlyons Rant.



The first Cu: foot it and cast of two Cu: $\hat{=}$ Lead up to the Top and cast off $\hat{=}$ hands round four with the third Couple $\hat{=}$ right and left at Top $\hat{=}$

100 Open the door to three

Musical score for 'Open the door to three'. It consists of two systems of two staves each. The top staff is in treble clef with a key signature of one sharp (F#) and a 9/8 time signature. The bottom staff is in bass clef with a key signature of one sharp (F#) and a 9/8 time signature. The music features a mix of eighth and sixteenth notes, with some measures containing triplets. There are repeat signs at the end of each system, and a fermata is placed over the final note of the first system's top staff.

The first Cu foot it to the 2^d Wo: and hands round three :: the same with the 2^d Man :: cros over one Cu: and turn :: hands all round Six ::

Stragla's Houfe — Strathspey

Musical score for 'Stragla's Houfe — Strathspey'. It consists of two systems of two staves each. The top staff is in treble clef with a key signature of one sharp (F#) and a common time signature (C). The bottom staff is in bass clef with a key signature of one sharp (F#) and a common time signature (C). The music features a mix of eighth and sixteenth notes, with some measures containing triplets. There are repeat signs at the end of each system, and a fermata is placed over the final note of the first system's top staff.

The 1st 2^d and 3^d Cu: foot it and hands round Six :: the same back again :: cros over two Cu: lead up to the Top. and cast off :: Turn corners with your right hands & your Partner with your Left :: the other corners the same :: lead outfides and turn ::

Musical score for 'Coll'n M'c Bain's Reel'. It consists of two systems of two staves each. The top staff of each system is in treble clef with a common time signature (C). The bottom staff is in bass clef with a common time signature (C). The music features a mix of eighth and sixteenth notes, with some triplets and rests. There are repeat signs at the end of each system.

The 1st and 2^d Cu: foot it and change sides $\dot{\bar{\cdot}}$ the same back again $\dot{\bar{\cdot}}$ lead down thro the third Cu: cast up into the 2^d Cu: Place lead up to the Top and cast off $\dot{\bar{\cdot}}$

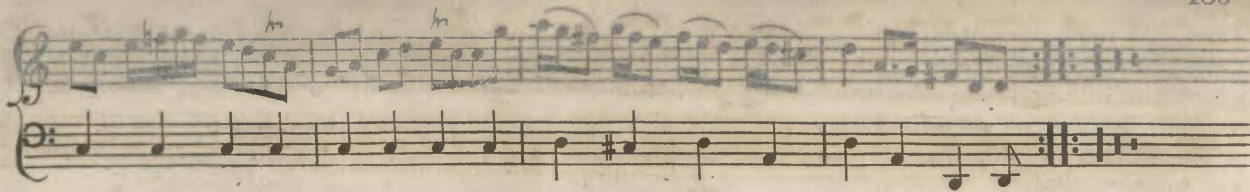
The House of h Gray

Musical score for 'The House of h Gray'. It consists of two systems of two staves each. The top staff of each system is in treble clef with a 6/8 time signature. The bottom staff is in bass clef with a 6/8 time signature. The music features a mix of eighth and sixteenth notes, with some triplets and rests. There are repeat signs at the end of each system.

The 1st Man turns his partner with his right hand & cast of one Cu: $\dot{\bar{\cdot}}$ turn with your left hands the Man casts off the Woman, cast up $\dot{\bar{\cdot}}$ foot it three Top and Bottom $\dot{\bar{\cdot}}$ 1st Man falls in between the 2^d and 3^d Wo: the 1st Wo: falls between the second and third Man at the same time foot it all fix the first Man turns his Partner. $\dot{\bar{\cdot}}$

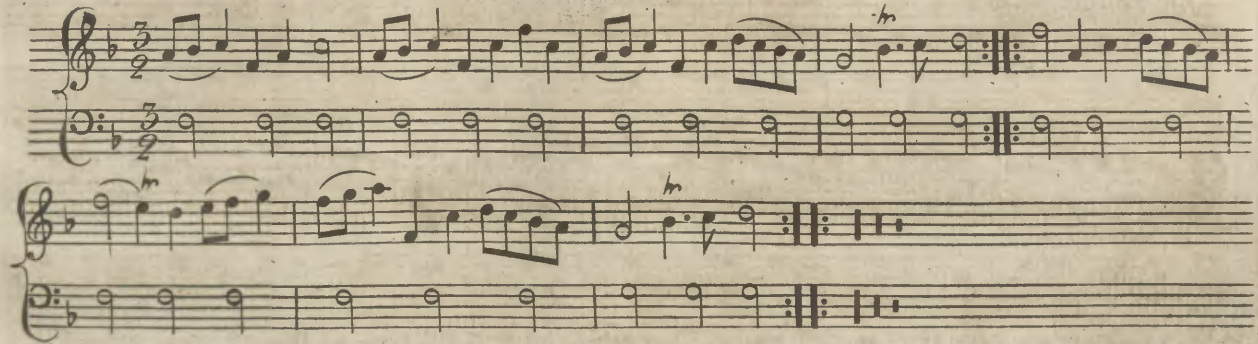
102 Capér Fey

Handwritten musical score for "Capér Fey", numbered 102. The score is written on five systems of two staves each (treble and bass clef). The music is in common time (C) and features a key signature of one sharp (F#). The notation includes various rhythmic values, accidentals, and dynamic markings such as *h* (hairpins) and *h* (accents). The piece concludes with a double bar line and a repeat sign.

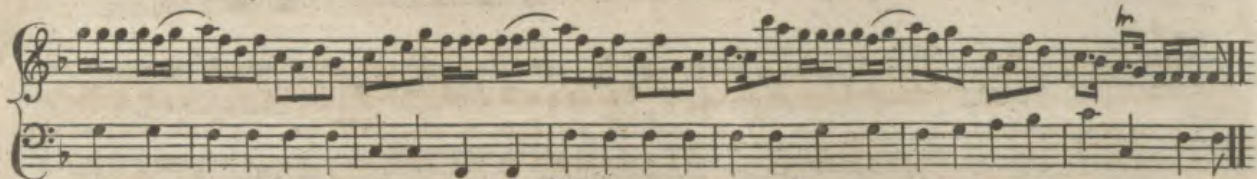
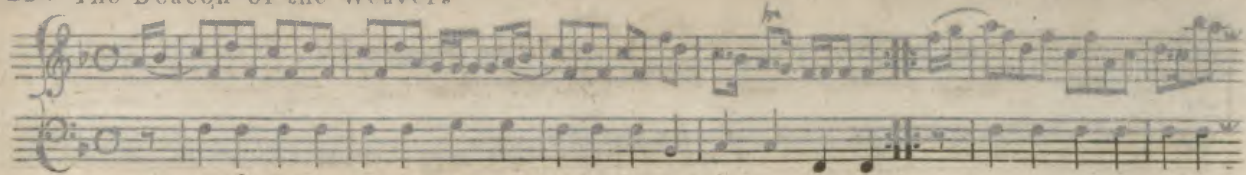


The 1st Cu: foot it and cast of two Cu: lead up to the Top and cast off = the 2^d Cu: does the same = the 1st Cu: lead down thro the 3^d Cu: the 2^d and 3^d follows them and all cast up into their own Places = the 1st 2^d and 3^d Cu: foot it change sides the same back again :: Hey contrary sides, the same on your own sides = the first Man hands round 3 with the 3^d Cu: the first Wo: hands round 3. with the 2^d Cu: at the same time = the 1st Man casts off turn the third Wo: stand in the 2^d Mans place the 1st Wo: casts off turn the 3^d Man, stand in the 2^d Mans place = Hands round fix right and left at Top. ::

Robin shore in Herst

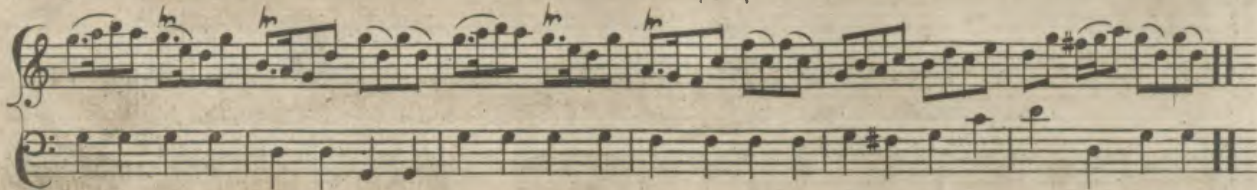
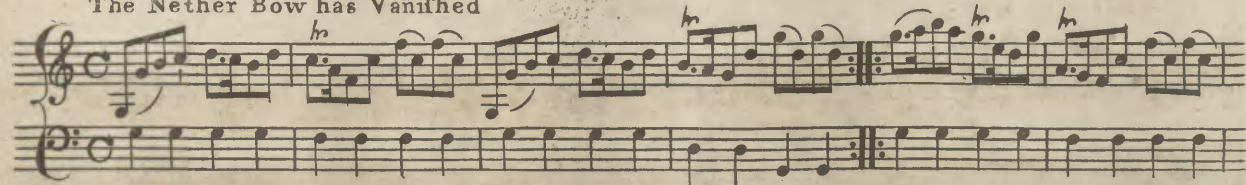


The first Cu: foot it cast of two Cu: = foot it and cast up again = cross over two Cu: :: lead up to the Top foot it & cast of :: foot it corners & turn = lead out sides & turn ::

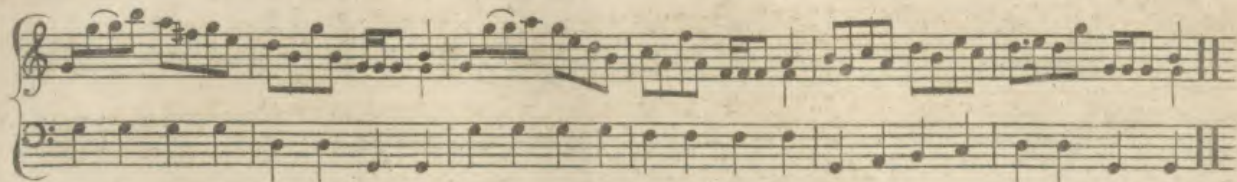
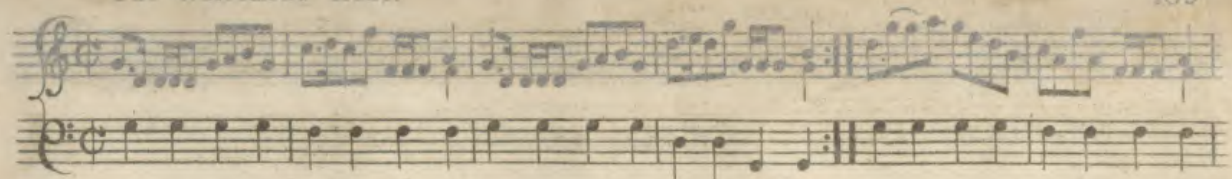


The first and 2^d Cu: foot it right and left half round ♩ the same back again ♩ lead down two Cu. up again & cast off ♩ set corners & turn ♩ lead outsidés and turn ♩

The Nether Bow has Vanished

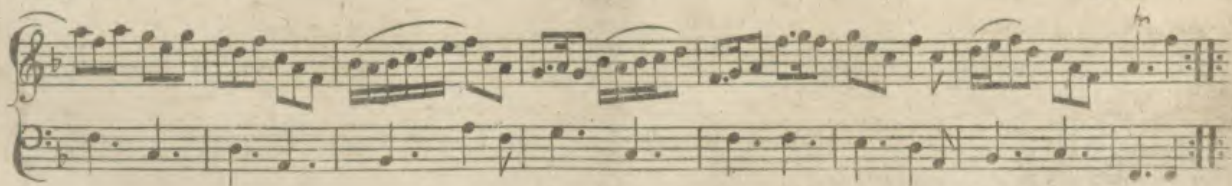
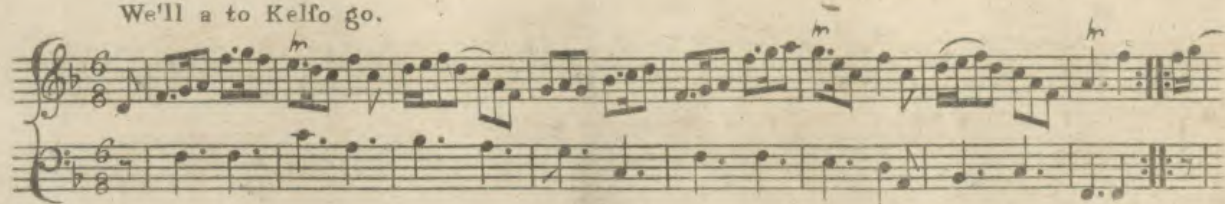


The first Cu: foot it to the 2^d Wo: and hands round 3. ♩ the same to the 2^d Man. ♩ lead down one Cu: up again and cast off ♩ foot it & hands round 4 with the 3^d Cu: ♩ foot it & hands round 4 with the 2^d Cu: ♩ lead up to the Top & cast off right & left at Top ♩



Hands a cross $\hat{=}$ and back again $\hat{=}$ cross over one Couple, right and left at Top $\hat{=}$

We'll a to Kelfo go.



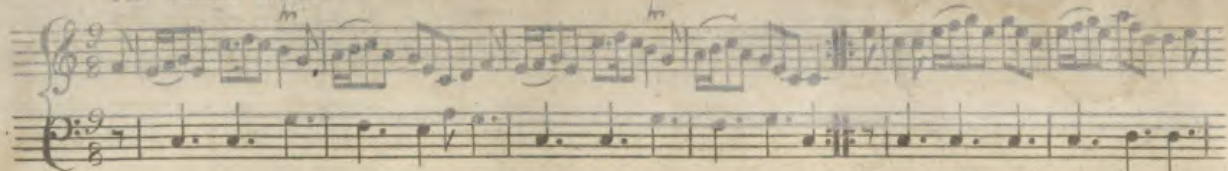
Half; right and left $\hat{=}$ the same back $\hat{=}$ four hand a cross and back again $\hat{=}$
lead through the bottom and cast up, right and left at Top $\hat{=}$

Lady Betty Hay's Reel.

Turn your Partner and cast of one Cu: $\underline{\underline{\cdot}}$ turn and cast up again $\underline{\underline{\cdot}}$ gallop down
two Cu: $\underline{\underline{\cdot}}$ up again and cast off $\underline{\underline{\cdot}}$ set corners and turn $\underline{\underline{\cdot}}$ and Hey $\underline{\underline{\cdot}}$

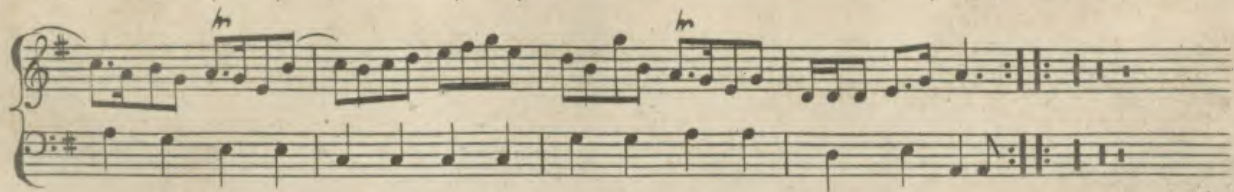
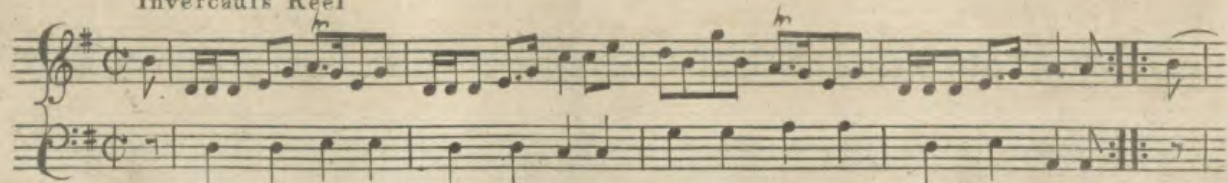
Drumshugh.

Cast of two Cu: $\underline{\underline{\cdot}}$ cast up again $\underline{\underline{\cdot}}$ cross over two Cu: $\underline{\underline{\cdot}}$ lead up to the
Top and cast off $\underline{\underline{\cdot}}$ set corners and turn $\underline{\underline{\cdot}}$ & Hey $\underline{\underline{\cdot}}$



Cast of one Cu: hands round 4 with the 3^d Cu: ♩ cast up and hands round with the Top ♩
 crofs over one Cu: lead up to the Top and cast of and turn your Partner ♩

Invercaul's Reel



Set acrofs to the 2^d Man and turn ♩ your Partner do the same ♩ gallop down
 the Middle up again and cast off ♩ right and left at Top ♩

The image displays a handwritten musical score for the piece 'Kheellum kh-llum iaa fein.' The score is arranged in five systems, each consisting of a treble clef staff and a bass clef staff. The key signature is one sharp (F#), and the time signature is common time (C). The music is written in a style characteristic of early 20th-century manuscript notation. The treble staves feature a melody with frequent eighth-note runs and some slurs, while the bass staves provide a steady accompaniment of eighth notes. There are several repeat signs (double bar lines with dots) throughout the piece, indicating sections to be played multiple times. The notation includes various note values, rests, and dynamic markings such as 'm' (mezzo-forte).

hands a cross $\underline{\underline{\text{m}}}$ and back again $\underline{\underline{\text{m}}}$ crosses over one Cu: $\underline{\underline{\text{m}}}$ lead up and cast
 off $\underline{\underline{\text{m}}}$ lead through the 3^d. Cu: and cast up $\underline{\underline{\text{m}}}$ through the Top and cast off $\underline{\underline{\text{m}}}$
 set corners and turn $\underline{\underline{\text{m}}}$ swing corners and swing your Partner $\underline{\underline{\text{m}}}$ and Reel $\underline{\underline{\text{m}}}$

The Bridge or Nairn

Musical notation for 'The Bridge or Nairn'. It consists of two systems of two staves each. The first system has a treble clef with a key signature of one sharp (F#) and a common time signature (C). The second system has a bass clef with the same key signature and time signature. The music features a mix of eighth and sixteenth notes, with some measures containing triplets. There are repeat signs and a fermata at the end of the piece.

Cast of two Cu: ♩ lead up to the Top and cast off ♩ set cross corners ♩
Swing corners and swing your Partner and lead outsidess ♩

Mount your Baggage

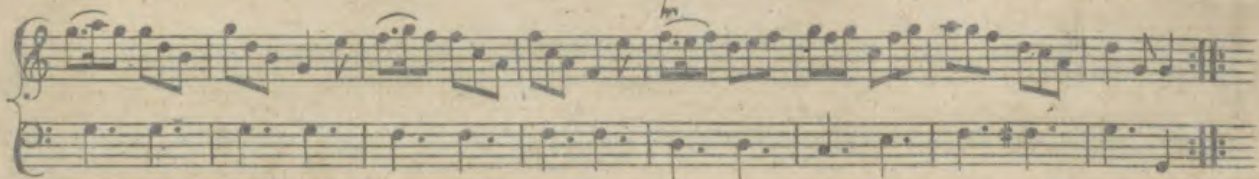
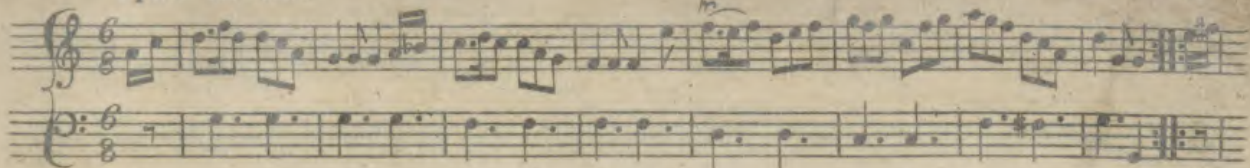
Musical notation for 'Mount your Baggage'. It consists of two systems of two staves each. The first system has a treble clef with a key signature of one flat (Bb) and a 3/2 time signature. The second system has a bass clef with the same key signature and time signature. The music features a mix of eighth and sixteenth notes, with some measures containing triplets. There are repeat signs and a fermata at the end of the piece.

Hands across ♩ back again ♩ cross over one Couple ♩ right and left at Top ♩

The Cross well of Edinburgh

A handwritten musical score for a dance, consisting of seven systems of two staves each. The music is written in treble and bass clefs with a key signature of one sharp (F#). The notation includes various rhythmic patterns, including eighth and sixteenth notes, and rests. There are several measures with a fermata (a horizontal line with a vertical tick) and repeat signs (double vertical lines with dots). Some notes are marked with a 'h' above them, likely indicating a grace note or a specific articulation. The paper shows signs of age, with some staining and wear.

Turn your Partner and cast off ♩ turn and cast up again ♩ lead down
 2^d Cu ♩ up again and cast off ♩ set corners and turn ♩ and Hey ♩



Hands across ♩ and back again ♩ cross over one Couple ♩ right and left at Top ♩

The Wives of Kilwinnon



Cast of two Cu ♩ cast up again ♩ lead down one Cu ♩ up again and cast
off ♩ fet corners, and turn ♩ lead outfides ♩

Musical score for 'Coll'n M'c Kay's Reel'. The score is written on four staves (two treble and two bass clefs). The first system consists of two staves, and the second system also consists of two staves. The music is in 2/4 time and features a mix of eighth and sixteenth notes, with some triplets and grace notes. The key signature is one sharp (F#).

Hands across $\hat{=}$ back again $\hat{=}$ gallop down one Cu: up again $\hat{\vee}$ cast off $\hat{=}$ right $\hat{\vee}$ left at Top $\hat{=}$

Croagh Patrick

Musical score for 'Croagh Patrick'. The score is written on four staves (two treble and two bass clefs). The first system consists of two staves, and the second system also consists of two staves. The music is in 6/8 time and features a mix of eighth and sixteenth notes, with some triplets and grace notes. The key signature is one sharp (F#).

Cast of one Cu: four hands at bottom $\hat{=}$ cast up four hands at Top $\hat{=}$ lead down the Middle up again and cast off $\hat{=}$ right and left at Top $\hat{=}$



