

Music

Glen 76.

JOHN GLEN.

JOHN GLEN

MS. 3299.

A  
 Collection of Original  
 SCOTCH TUNES  
 for the  
 VIOLIN

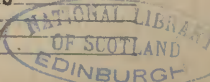
*Tealant and comick. being full of the  
 Highland Humour price 7.*

THE GLEN COLLECTION  
 OF SCOTTISH MUSIC

Presented by Lady Dorothea Ruggles-  
 Brise to the National Library of Scotland,  
 in memory of her brother, Major Lord  
 George Stewart Murray, Black Watch,  
 killed in action in France in 1914.

28th January 1927.

*Sold by John Young Musical Instrument Maker at y<sup>e</sup> Dolphin &  
 Crown y<sup>e</sup> West end of St. Pauls Church, where you may be furnished w<sup>th</sup>  
 all sorts of Violins, Flutes, Hoboys, Bass-Vio, Harpsicords or Spinets  
 & Books of Tunes with Directions for any of these Instruments*



Glen 76

JOHN GLEN.

JOHN GLEN

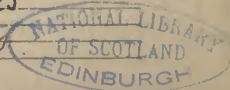
JOHN GLEN  
1871-1872  
1873-1874  
1875-1876  
1877-1878  
1879-1880  
1881-1882  
1883-1884  
1885-1886  
1887-1888  
1889-1890  
1891-1892  
1893-1894  
1895-1896  
1897-1898  
1899-1900

MS. 3299

A  
 Collection of Original  
 SCOTCH TUNES  
 for the  
 VIOLIN

The whole Pleasant and comick. being full of the  
 Highland Humour price 1<sup>s</sup>.

Sold by John Young Musical Instrument Maker at y<sup>e</sup> Dolphin &  
 Crown y<sup>e</sup> West end of St. Pauls Church, where you may be furnisht w<sup>th</sup>  
 all sorts of Violins, Flutes, Hoboys, Bass-Vio<sup>l</sup>, Harpsicords or Spinets  
 & Books of Tunes with Directions for any of these Instruments

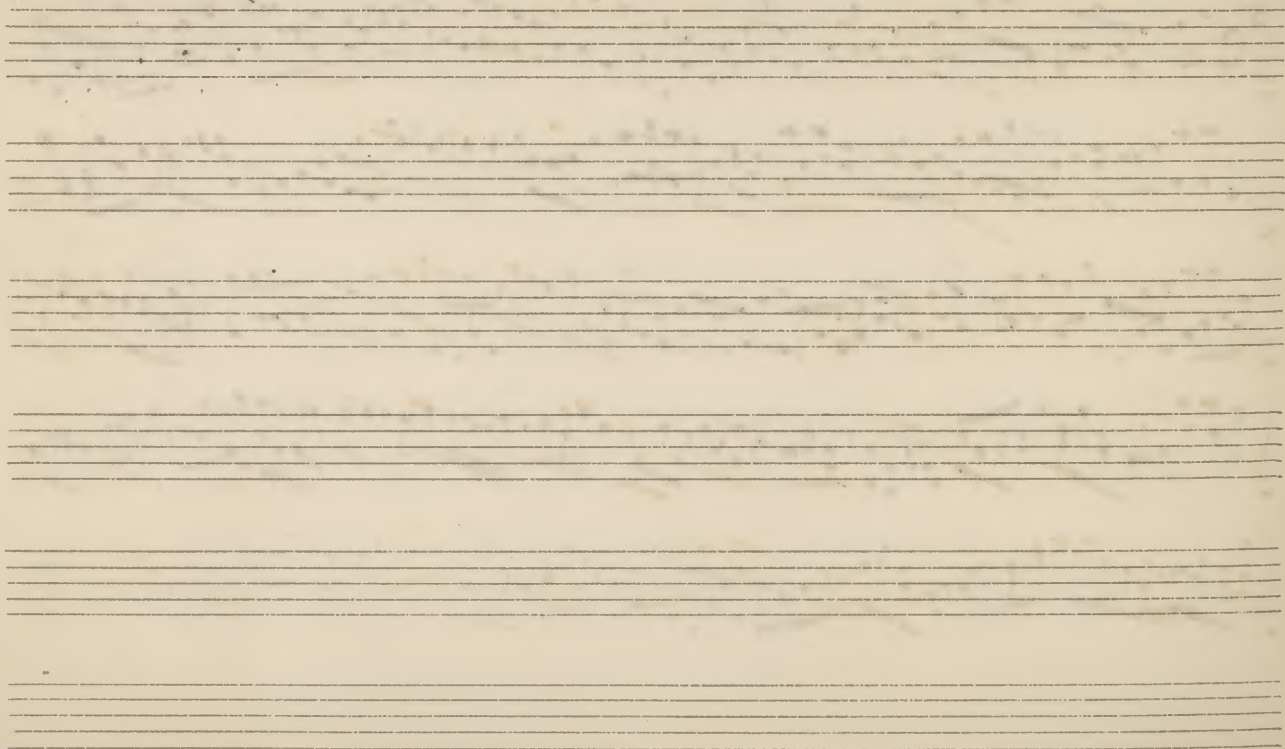


11307

The collection was derived from the original which is in the possession of  
F. W. S. (copy) 26<sup>th</sup> June 1900

The Captain shall not get thee

A handwritten musical score consisting of five staves. The first staff begins with a treble clef and a key signature of one sharp (F#). The music is written in a single melodic line. The notation includes various note values, rests, and bar lines. The piece concludes with a double bar line and a repeat sign. Below the fifth staff, there are three empty musical staves.

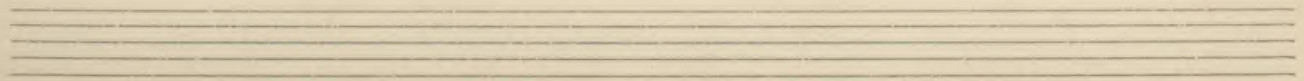
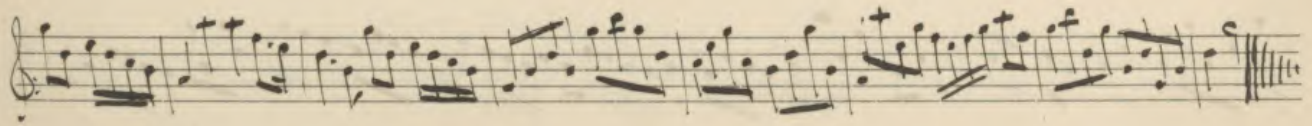
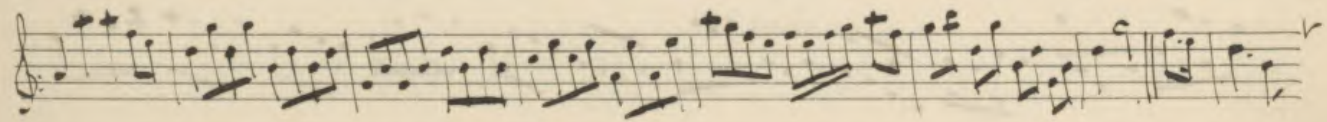
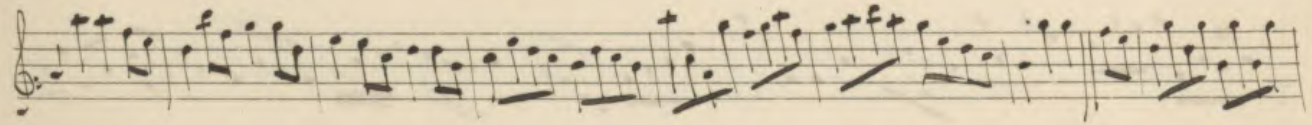
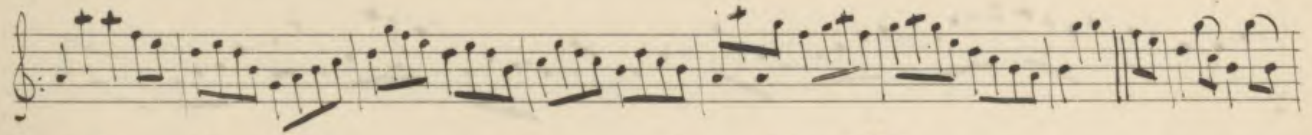
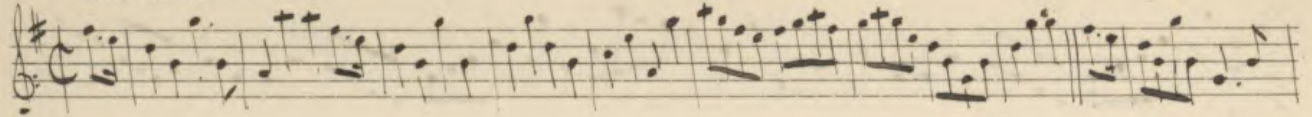




*One the Moor to Maggie*

V

2



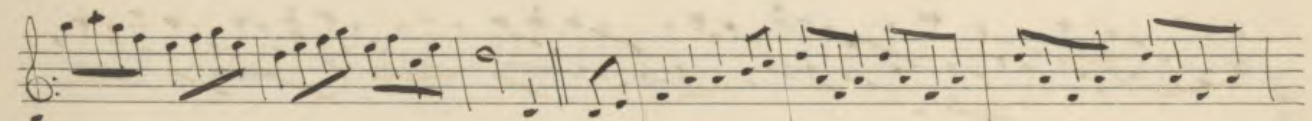
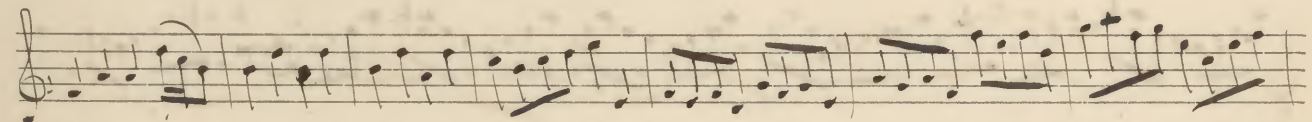
Bonnie Kirsty

Handwritten musical score for the piece "Bonnie Kirsty". The score is written on five staves of music. The first staff begins with a treble clef, a key signature of one sharp (F#), and a common time signature (C). The music is written in a single melodic line. The notation includes various note values, rests, and dynamic markings such as accents and slurs. The piece concludes with a double bar line and repeat dots at the end of the fifth staff.



Cocks Louns walia hoyn

4



5

If thou were mine own thing

5

Handwritten musical notation for the piece 'If thou were mine own thing'. It consists of two staves of music in G major (one sharp) and common time. The first staff begins with a treble clef, a sharp sign, and a common time signature. The music features a series of eighth and sixteenth notes, many with upward-pointing stems and small '+' signs above them, indicating fingerings. The second staff continues the melody and includes a double bar line with repeat dots.

The Boniest Lass in all the World

6

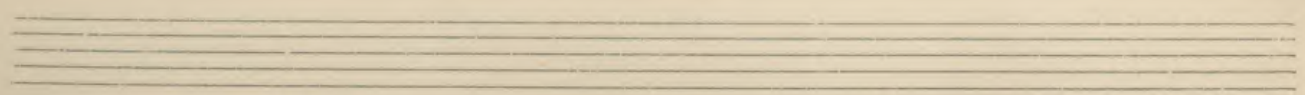
Handwritten musical notation for the piece 'The Boniest Lass in all the World'. It consists of three staves of music in G major (one sharp) and common time. The first staff begins with a treble clef, a sharp sign, and a common time signature. The music features a series of eighth and sixteenth notes, many with upward-pointing stems and small '+' signs above them, indicating fingerings. The second and third staves continue the melody and include double bar lines with repeat dots.



*I woud have my Gown Made*

7

A handwritten musical score on five staves. The first staff begins with a treble clef, a key signature of one flat (B-flat), and a common time signature (C). The music is written in a cursive, handwritten style. The notation includes various note values (quarter, eighth, and sixteenth notes), rests, and bar lines. The piece concludes with a double bar line and a series of vertical lines indicating the end of the score. The paper shows signs of age, including some staining and discoloration.



7. ✓

The Loss of Betties Mills

8

A handwritten musical score for the piece "The Loss of Betties Mills". The score is written on five staves of music paper. The first staff begins with a treble clef, a common time signature (C), and a key signature of one sharp (F#). The music is written in a single melodic line. The notation includes various note values such as eighth and sixteenth notes, often beamed together, and rests. There are several measures with double bar lines, indicating the end of phrases or sections. The handwriting is clear and legible. The piece concludes with a double bar line and repeat dots at the end of the fifth staff.

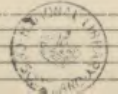


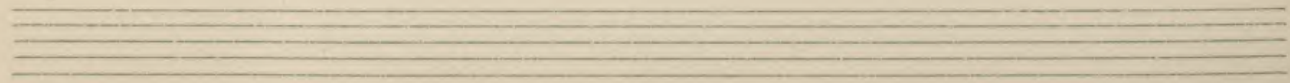
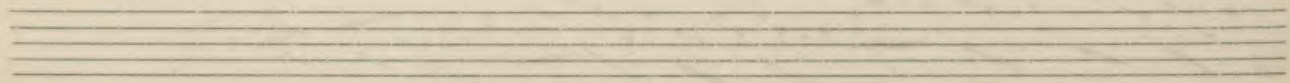
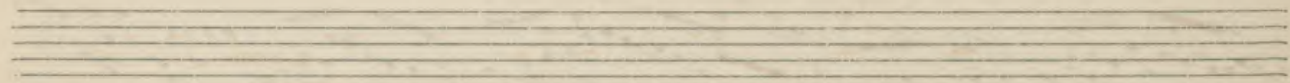
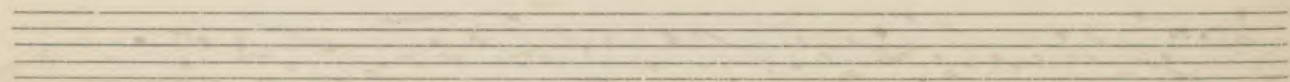
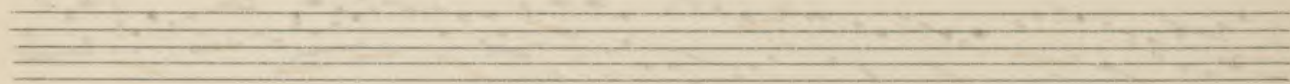
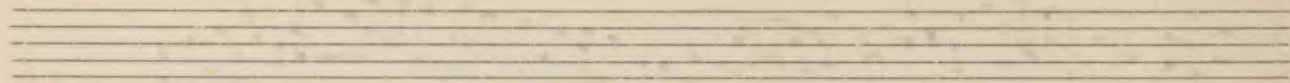
To Serve a Gallant Lady

v

9

A handwritten musical score consisting of five staves of music. The notation is in a single system, likely for a single melodic line. The music is written in a treble clef with a common time signature (C). The notation includes various rhythmic values such as eighth and sixteenth notes, often beamed together, and rests. There are several bar lines throughout the piece, indicating the end of measures. The handwriting is clear and consistent, typical of a composer's manuscript.







Hallow Even

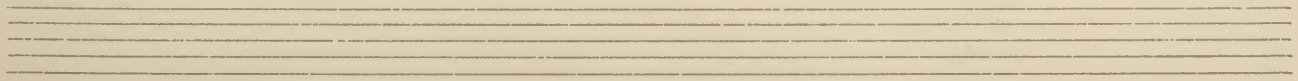
V  
10

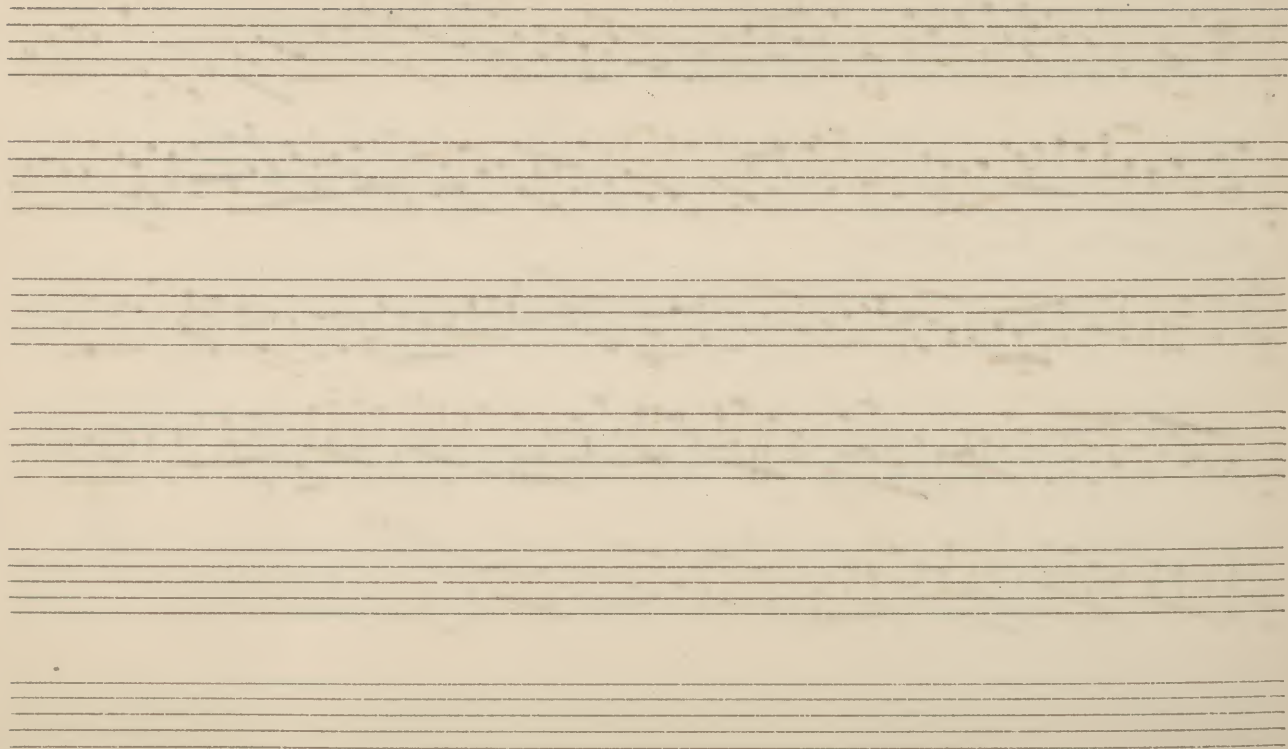
Handwritten musical notation for 'Hallow Even'. It consists of two staves of music in treble clef, common time (C), and a key signature of one flat (B-flat). The melody is written on the upper staff, and the accompaniment is on the lower staff. The piece concludes with a double bar line and repeat dots.

The Duke of Queens burys Scotch Measure

11

Handwritten musical notation for 'The Duke of Queens burys Scotch Measure'. It consists of three staves of music in treble clef, common time (C), and a key signature of one sharp (F#). The melody is written on the upper staff, and the accompaniment is on the lower two staves. The piece concludes with a double bar line and repeat dots.





Galloways Hornpipe

12

The image shows a handwritten musical score for a piece titled "Galloways Hornpipe". The score is written on five staves of music, all in treble clef and common time (C). The first staff begins with a treble clef, a common time signature, and a key signature of one flat (B-flat). The music is characterized by a mix of eighth and sixteenth notes, often beamed together in groups. There are several double bar lines throughout the piece, indicating measures of rest or the end of a phrase. The notation includes various rhythmic values and some accidentals. The paper is aged and shows some staining, particularly in the middle section. The number "12" is written in the left margin next to the first staff.



11

My Dearie and the Die

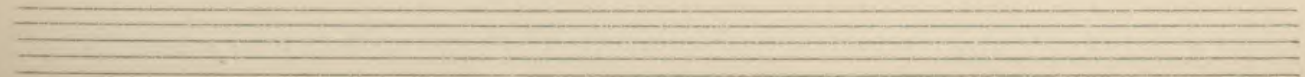
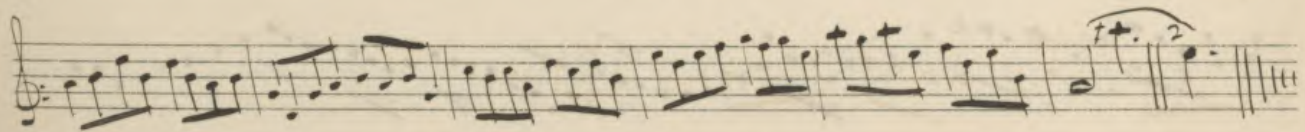
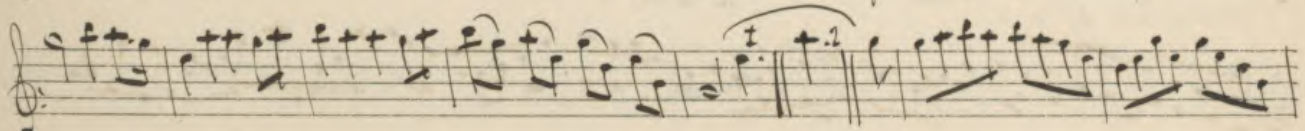
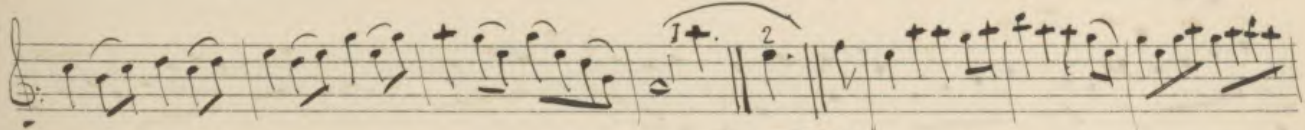
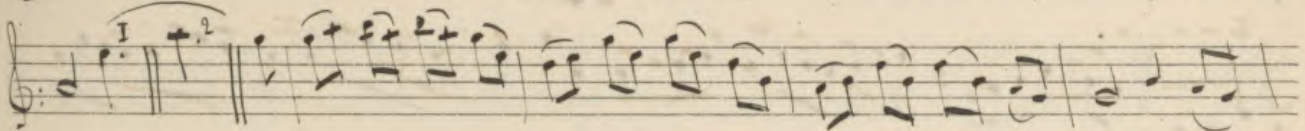
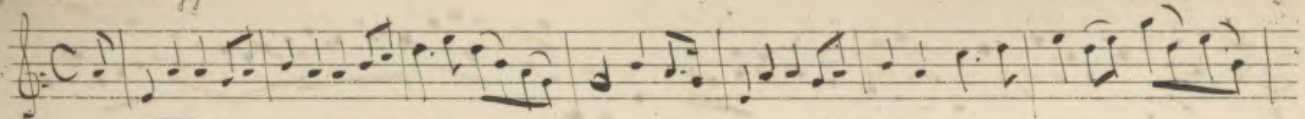
13

A handwritten musical score consisting of five staves. The first staff begins with a treble clef, a common time signature, and a key signature of one sharp (F#). The music is written in a single melodic line. The second staff continues the melody with some notes marked with a cross symbol. The third and fourth staves continue the piece, with the fourth staff ending in a double bar line. The fifth staff concludes the piece with a final double bar line and a fermata. The paper shows signs of age and wear.



Katrin Hoggie

14.



Janett drinks no Water

15

Handwritten musical notation for the piece 'Janett drinks no Water'. It consists of three staves of music in treble clef with a common time signature. The first staff begins with a treble clef and a common time signature. The music features a mix of eighth and sixteenth notes, with some slurs and accents. There are two small '+' symbols below the first staff. The second staff continues the melody with similar note values and includes a double bar line. The third staff concludes the piece with a double bar line and a series of vertical lines indicating a final cadence.

Bonne Kettle of Edane

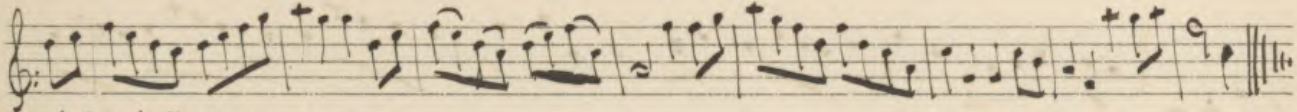
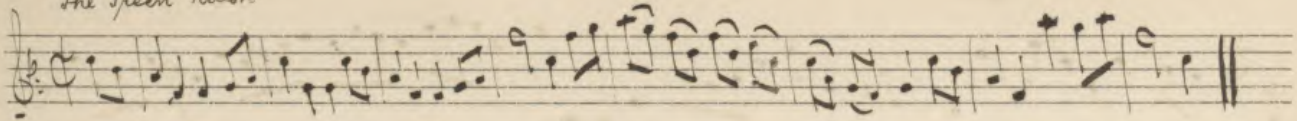
16

Handwritten musical notation for the piece 'Bonne Kettle of Edane'. It consists of two staves of music in treble clef with a common time signature. The first staff begins with a treble clef and a common time signature. The music features a mix of eighth and sixteenth notes, with some slurs and accents. There are two small '+' symbols below the first staff. The second staff continues the melody with similar note values and includes a double bar line at the end.



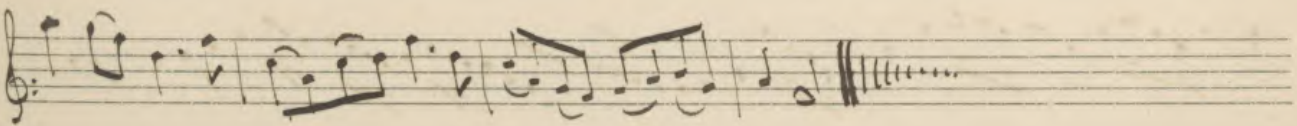
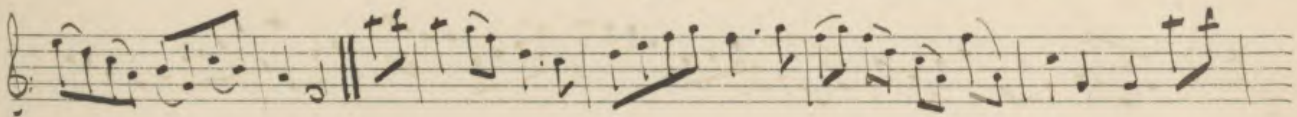
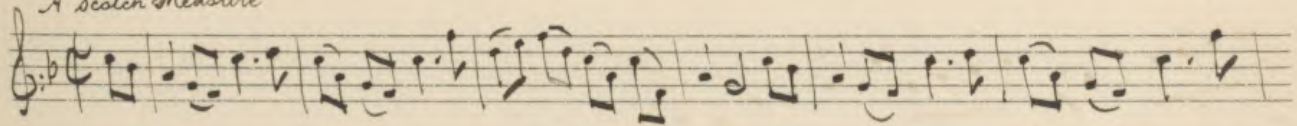
The Green Ribbon

17



A Scotch Measure

18



Blank musical staff with five lines.

Blank musical staff with five lines.

Blank musical staff with five lines.

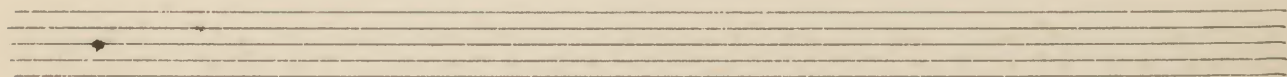
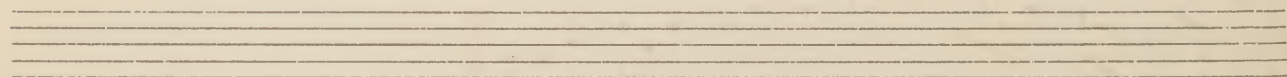
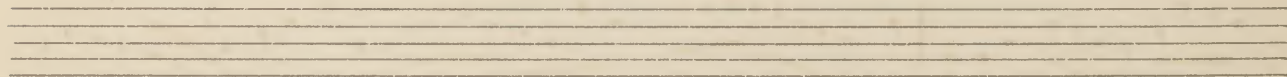
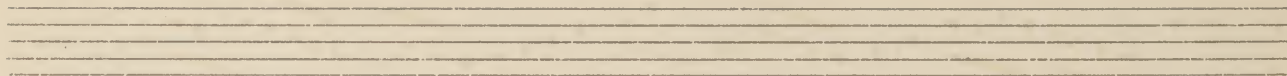
Blank musical staff with five lines.

Blank musical staff with five lines.

Blank musical staff with five lines.



[Blank handwriting practice lines]



A Scotch Measure

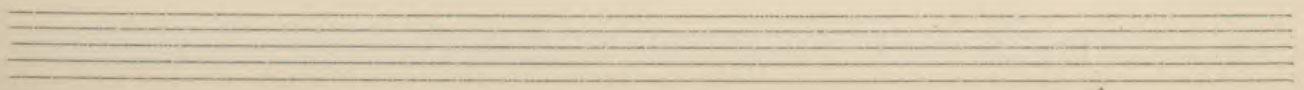
21

Handwritten musical notation for 'A Scotch Measure'. It consists of three staves of music in G major (one sharp) and 3/4 time. The first staff begins with a treble clef and a common time signature. The music features a mix of eighth and sixteenth notes, with some beamed eighth notes. The second staff contains a double bar line. The third staff ends with a double bar line and a fermata.

The new way to E D

22

Handwritten musical notation for 'The new way to E D'. It consists of two staves of music in G major (one sharp) and 3/4 time. The first staff begins with a treble clef and a common time signature. The music features a mix of eighth and sixteenth notes, with some beamed eighth notes. The second staff continues the melody and includes some triplets. The piece ends with a double bar line.



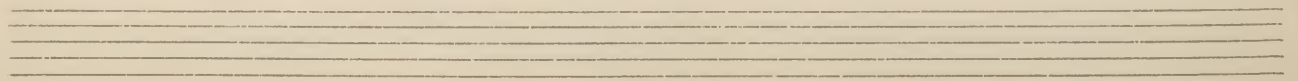
17

*Bitty Spoon and Green Ladle*

23

*Stay and take your Breeches with you*

24



Allen Water

25

A handwritten musical score for a piece titled "Allen Water". The score is written on five staves of five-line music paper. The first staff begins with a treble clef, a key signature of one flat (B-flat), and a common time signature (C). The music consists of a single melodic line with various note values, including eighth and sixteenth notes, and rests. There are several bar lines throughout the piece, indicating the end of measures. The notation is clear and legible, with some ink bleed-through from the reverse side of the page. The piece concludes with a double bar line and a series of vertical lines, suggesting a final cadence or the end of the composition.



A Scotch Measure

26

A handwritten musical score for a piece titled "A Scotch Measure". The score is written on five staves of music paper. The first staff begins with a treble clef, a key signature of one flat (B-flat), and a common time signature (C). The music is written in a rhythmic style characteristic of Scottish folk music, featuring many eighth and sixteenth notes, often beamed together. There are several measures with a "+" sign above them, likely indicating a specific rhythmic pattern or a measure to be repeated. The score concludes with a double bar line. The second and third staves continue the melodic line with similar rhythmic patterns. The fourth and fifth staves provide further development of the melody, with some measures containing more complex rhythmic figures. The handwriting is clear and legible.



A Scotch Measure

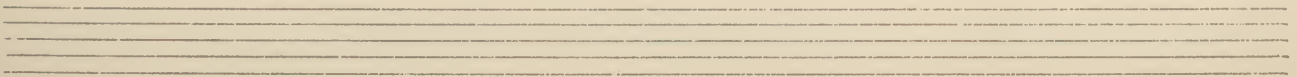
27

Handwritten musical notation for measures 27-30. The first staff is in 3/4 time with a treble clef and a key signature of one flat. It contains a sequence of eighth and sixteenth notes. The second staff continues the melody with a repeat sign. The third staff concludes the piece with a double bar line and a decorative flourish.

A Scotch Measure

28

Handwritten musical notation for measures 28-31. The first staff is in common time with a treble clef and a key signature of one flat. It features a mix of eighth and sixteenth notes. The second staff continues the melody and ends with a double bar line and a decorative flourish.



21

*A Scotch Measure*

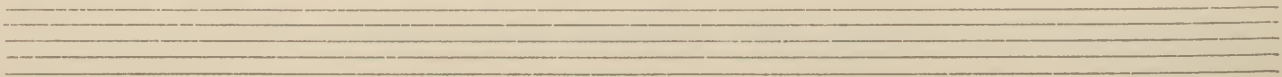
29

Handwritten musical notation for 'A Scotch Measure'. It consists of two staves of music in treble clef, 3/4 time signature, and a key signature of one flat (B-flat). The melody is characterized by a mix of eighth and sixteenth notes, with some triplet-like groupings. The piece concludes with a double bar line.

*The Farther bein the Wellcomer*

30

Handwritten musical notation for 'The Farther bein the Wellcomer'. It consists of three staves of music in treble clef, 3/4 time signature, and a key signature of one sharp (F#). The melody is primarily composed of eighth and sixteenth notes, with some triplet-like groupings. The piece concludes with a double bar line.





Scotch Tune

31

Handwritten musical notation for 'Scotch Tune' on two staves. The first staff begins with a treble clef, a key signature of one flat (B-flat), and a 3/4 time signature. The music consists of eighth and sixteenth notes with various ornaments (accents and slurs) above the notes. The second staff continues the melody and concludes with a double bar line and a series of vertical lines representing a cadence.

Jears the best of any

32

Handwritten musical notation for 'Jears the best of any' on three staves. The first staff starts with a treble clef and a key signature of one flat. The notation includes eighth and sixteenth notes with ornaments. The second staff continues the piece, and the third staff concludes with a double bar line and a cadence. There is a small handwritten mark at the end of the third staff.



23

Wherefor Came you here Ise warrant

33

Scots Tune

7  
34

7  
The Scottish Laddie or Scots Laddie

An Irish Tune

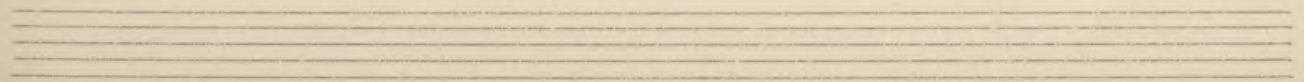
35

Handwritten musical notation for 'An Irish Tune' on three staves. The first staff begins with a treble clef, a key signature of one sharp (F#), and a common time signature (C). The melody consists of eighth and sixteenth notes. The second and third staves continue the melody with similar rhythmic patterns and some triplet-like groupings.

Holland Tune

36

Handwritten musical notation for 'Holland Tune' on two staves. The first staff begins with a treble clef, a key signature of one sharp (F#), and a common time signature (C). The melody features a mix of eighth and sixteenth notes. The second staff continues the piece, ending with a double bar line and a repeat sign.



i + 15 ff.



