

CHRISTISON'S
AGRICULTURAL
TABLES

ABS. 1.88.9

From Mr. William Lynd
to John Bulman

July 1854

CHRISTISON'S

AGRICULTURAL TABLES.

NEW TABLES

FOR COMPUTING

THE WEIGHT OF CATTLE BY MEASUREMENT,

THE QUANTITY OF HAY IN STACKS OR RICKS,
ROUND AND OBLONG;

THE VALUING OF LAND;

WITH

OTHER PRACTICAL TABLES, AND DIRECTIONS
FOR USING THEM.

By JOHN CHRISTISON,
TEACHER OF MATHEMATICS, EDINBURGH.

FIFTH EDITION.

EDINBURGH:
JAMES BRYDONE, AND J. L. SMITH.

1844.

P R E F A C E.

THE following important Tables have been compiled chiefly with a view to afford a cheap and easy book of reference to Farmers, Cattle-dealers, and others, who are engaged in buying and selling cattle or hay—in valuing the produce of land to any number of acres, roods, &c. — in planting a piece of ground with trees, thorns, or cabbages—in ditching—in artificers measuring—and in manuring land.

To those who have neither time nor inclination to perform long tedious calculations, the following Tables must be of very great advantage as they present an easy and expeditious mode of knowing the weight, value, or quantity of any of the things for which they have been arranged.

The tables for finding the weight of cattle are calculated for Imperial measure, but by an easy process, noticed hereafter, the weight found in the Tables may be converted into any other weight if required. The Tables for finding the weight of hay are also calculated for Imperial measure.

JOHN CHRISTISON.

Edinburgh, 1839.

THE END

The following is a list of the names of the persons who have been named in the foregoing pages. The names are given in the order in which they are mentioned in the text. The names are given in the order in which they are mentioned in the text.

The names of the persons who have been named in the foregoing pages are given in the order in which they are mentioned in the text. The names are given in the order in which they are mentioned in the text.

The names of the persons who have been named in the foregoing pages are given in the order in which they are mentioned in the text. The names are given in the order in which they are mentioned in the text.

The names of the persons who have been named in the foregoing pages are given in the order in which they are mentioned in the text. The names are given in the order in which they are mentioned in the text.

CONTENTS.

TABLE for the measurement and weight of Cattle,	<i>page</i> 3
Table to ascertain the quantity of Hay in stacks of a round form,	15
Table for ascertaining the quantity of Hay in stacks of an oblong form,	24
Table for Valuing Land, at any rate per acre,	31
Table for Planting Cabbages,	46
Table for Planting Trees,	48
Table of Slater's and Thatcher's Work,	51
Table showing the number of cubic feet in one yard of running draining,	54
Table of Mason Work,	55
Table showing the number of Thorns requisite to enclose any quantity of land,	57
Table for Manuring,	60
Table of Solid Measure,	63
Table for converting Scotch acres into Imperial acres, and equivalent price per acre,	71
Table for converting Scotch Money into Sterling,	72
Table of Wages	73

TABLE

FOR ASCERTAINING THE WEIGHT OF CATTLE
BY MEASUREMENT.*

To find the Weight of Cattle by the Table, take the length from the fore part of the shoulder to the extremities of the buttock, the beast standing straight, and the girth just behind the fore legs, by measurement in inches — look at the Table, in the column *Girth*, and in the column *Length*, for the number of inches, — for instance, 48 inches girth and 36 inches length. Find 48 in the *Girth* column, and 36 in the *Length* column; opposite to which, *i. e.* 36, you have 11 stone 5 lbs. An allowance must be made if exceedingly fat or very lean: in the former case, a proportion must be added, and in the latter deducted, say about 1-20th. The computations in the Tables apply to the four quarters, exclusive of hide, tallow, &c., in stones of 14 lb. to the stone, and 16 ounces avoirdupois to the lb.

To make these Tables universally useful, multiply the given quantity by 14, and divide by the number of ounces in the lb.; for instance, when the pound consists of 22 ounces, look in the Table for the weight in stones or pounds: — thus, 28 stone 7 pounds, $28.7 \times 14 \div 22 = 18$ stone 3 pounds; or for Smithfield, where the stone is only 8 lb. of 16 oz., multiply by 14 and divide by 8.

By Carey's Cattle Guage the weight can easily be ascertained, by attending to the directions in the following examples: —

EXAMPLE I.—Let the dimensions of the animal be taken as directed, and suppose the length to be 5 feet 6 inches, and the girth 6 feet 4 inches; required the weight in stones of 14 lb. to the stone, and 16 oz. to the lb?

First. By the Table. With the length 5 feet 6 inches equal to 66 inches, and girth 6 feet 4 inches equal to 76 inches; there will be found in the Table where these correspond, 52 st. 6 lb.

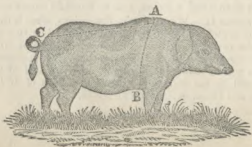
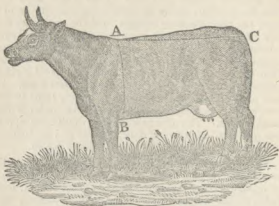
Second. By Carey's Sliding Rule. Set the mark 14 lb. on the slide to the length 5 feet 6 inches on the fixed rule, then opposite to the girth 6 feet 4 inches, will be found 53 stones very nearly.

EXAMPLE II.—With the same dimensions, what is the London weight in stones of 8 lb. to the stone, and 16 oz. to the lb.; and likewise in stones of 16 lb. to the stone, and 16 oz. to the lb.?

Set the mark 8 lb. to 5 feet 6 inches, then opposite 6 feet 4 inches will be found $92\frac{2}{3}$ London stones, one half of which, or $46\frac{1}{3}$, will be the weight in customary stones of 16 lb. to the stone, and 16 oz. avoirdupois to the lb.

* In the Table half-inches are dispensed with.

TAKE the Length from A to C along the back, and Circumference round by A and B, all in inches, these numbers found together in some of the columns of the Table will point out the Imperial Weight of the four quarters, in stones and pounds.



TABLE

OF THE

MEASUREMENT AND WEIGHT

OF

CATTLE.

Girth.	Len.	Weight.		Girth.	Len.	Weight.		Girth.	Len.	Weight.	
Inches	In.	Sts.	Lbs.	Inches.	In.	Sts.	Lbs.	Inches.	In.	Sts.	Lbs.
32	22	3	0	34	24	3	11	36	26	4	8
	23	3	2		25	3	12		27	4	11
	24	3	5		26	4	1		28	5	0
	25	3	7		27	4	4		29	5	2
	26	3	9		28	4	6		30	5	4
	27	3	11		29	4	8		31	5	7
	28	3	13		30	4	10		32	5	9
	29	4	2		31	4	12		33	5	11
	30	4	4		32	5	1		34	6	1
	31	4	6		33	5	3		35	6	3
33	23	3	7	35	25	4	3	37	27	4	5
	24	3	8		26	4	5		28	5	1
	25	3	10		27	4	7		29	5	6
	26	3	12		28	4	9		30	5	8
	27	4	0		29	4	11		31	5	11
	28	4	3		30	5	0		32	6	1
	29	4	4		31	5	2		33	6	3
	30	4	6		32	5	5		34	6	5
	31	4	8		33	5	7		35	6	7
	32	4	10		34	5	9		36	6	11

Girth.	Len.	Weight.	Girth.	Len.	Weight.	Girth.	Len.	Weight.
Inches	In.	Sts. lbs.	Inches.	In.	Sts. lbs.	Inches.	In.	Sts. lbs.
38	28	5 7	41	39	9 0	45	40	11 2
	29	5 10	42	30	7 4		41	11 5
	30	5 13		31	7 7		42	11 9
	31	6 2		32	7 10		43	11 13
	32	6 5		33	8 0	46	34	9 12
	33	6 7		34	8 3		35	10 2
	34	6 10		35	8 6		36	10 6
	35	6 13		36	8 10		37	10 10
	36	7 2		37	8 13		38	11 1
	37	7 5		38	9 3		39	11 5
39	27	5 7		39	9 5		40	11 9
	28	5 12		40	9 9		41	11 13
	29	6 1	43	31	7 12		42	12 3
	30	6 3		32	8 2		43	12 7
	31	6 6		33	8 5		44	12 11
	32	6 9		34	8 9	47	34	10 4
	33	6 11		35	8 11		35	10 8
	34	6 13		36	9 2		36	10 13
	35	7 2		37	9 5		37	11 3
	36	7 7		38	9 9		38	11 7
40	27	5 13		39	9 13		39	11 12
	28	6 2		40	10 2		40	12 2
	29	6 5		41	10 6		41	12 4
	30	6 8	44	32	8 7		42	12 10
	31	6 11		33	8 11		43	13 1
	32	7 0		34	9 0		44	13 5
	33	7 3		35	9 4	48	34	10 11
	34	7 6		36	9 8		35	11 1
	35	7 9		37	9 11		36	11 5
	36	7 12		38	10 1		37	11 10
	37	8 2		39	10 5		38	12 0
41	29	6 9		40	10 9		39	12 5
	30	6 13		41	10 12		40	12 9
	31	7 2		42	11 2		41	12 13
	32	7 5	45	33	9 2		42	13 4
	33	7 8		34	9 6		43	13 8
	34	7 12		35	9 10		44	13 13
	35	8 1		36	10 0		45	14 3
	36	8 3		37	10 4		46	14 8
	37	8 7		38	10 8		47	14 12
	38	8 11		39	10 12		48	15 3

Girth.	Len.			Weight.			Girth.	Len.			Weight.				
Inches	In.	Sts.	Lbs.	Inches.	In.	Sts.	Lbs.	Inches.	In.	Sts.	Lbs.	Inches.	In.	Sts.	Lbs.
56	52	22	6	58	53	24	7	60	51	25	3				
	53	22	12		54	25	0		52	25	10				
	54	23	4		55	25	6		53	26	3				
	55	23	10		56	25	12		54	26	10				
	56	24	2		57	26	3		55	27	3				
	57	24	8		58	26	12		56	27	10				
57	38	16	5	59	38	18	3		57	28	3				
	39	16	11		39	18	9		58	28	10				
	40	17	12		40	19	2		59	29	3				
	41	18	4		41	19	9		60	29	12				
	42	18	11		42	20	1		61	38	19	6			
	43	19	3		43	20	8		39	19	13				
	44	19	9		44	21	1		40	20	6				
	45	20	1		45	21	7		41	21	0				
	46	20	8		46	22	0		42	21	7				
	47	21	0		47	22	7		43	22	0				
	48	21	6		48	23	0		44	22	7				
	49	21	12		49	23	6		45	23	0				
	50	22	5		50	23	13		46	23	7				
	51	22	11		51	24	6		47	24	1				
	52	23	3		52	24	12		48	24	8				
	53	23	9		53	25	5		49	25	1				
	54	24	1		54	25	12		50	25	8				
	55	24	7		55	26	5		51	26	1				
	56	24	13		56	26	11		52	26	8				
	57	25	5		57	27	4		53	27	1				
58	38	17	8		58	27	11		54	27	8				
	39	18	1		59	28	4		55	28	1				
	40	18	7	60	38	18	11		56	28	8				
	41	19	0		39	19	4		57	29	1				
	42	19	6		40	19	11		58	29	8				
	43	19	12		41	20	4		59	30	1				
	44	20	4		42	20	11		60	30	10				
	45	20	10		43	21	4		62	38	20	1			
	46	21	4		44	21	11		39	20	8				
	47	21	10		45	22	4		40	21	2				
	48	22	3		46	22	11		41	21	10				
	49	22	9		47	23	4		42	22	3				
	50	23	2		48	23	11		43	22	9				
	51	23	8		49	24	4		44	23	4				
	52	24	1		50	24	11		45	23	11				

Girth.	Len.			Weight.			Girth.	Len.			Weight.		
Inches	In.	Sts.	Lbs.	Inches	In.	Sts.	Lbs.	Inches	In.	Sts.	Lbs.		
62	46	24	4	64	41	23	1	66	61	35	6		
	47	24	12		42	23	9		62	36	1		
	48	25	5		43	24	3		42	25	2		
	49	25	13		44	24	11		43	25	11		
	50	26	6		45	25	5		44	26	5		
	51	26	13		46	25	13		45	27	0		
	52	27	7		47	26	7		46	27	8		
	53	28	0		48	27	1		47	28	2		
	54	28	7		49	27	9		48	28	10		
	55	29	1		50	28	2		49	29	5		
	56	29	8		51	28	10		50	30	0		
	57	30	2		52	29	4		51	30	8		
	58	30	9		53	29	12		52	31	2		
	59	31	2		54	30	6		53	31	10		
	60	31	9		55	31	0		54	32	5		
63	38	20	10		56	31	8		55	32	13		
	39	21	4		57	32	2		56	33	8		
	40	21	12		58	32	10		57	34	2		
	41	22	5		59	33	6		58	34	10		
	42	22	12	65	60	33	11		59	35	4		
	43	23	5		40	23	4		60	35	13		
	44	23	12		41	23	11		61	36	8		
	45	24	8		42	24	6		62	37	2		
	46	25	1		43	24	12	67	63	37	10		
	47	25	9		44	25	8		64	38	5		
	48	26	3		45	26	2		43	26	8		
	49	26	10		46	26	10		44	27	2		
	50	27	4		47	27	4		45	27	10		
	51	27	12		48	27	12		46	28	7		
	52	28	5		49	28	6		47	29	0		
	53	28	12		50	28	12		48	29	9		
	54	29	5		51	29	6		49	30	4		
	55	29	12		52	29	12		50	30	12		
	56	30	5		53	30	11		51	31	7		
	57	31	2		54	31	6		52	32	1		
	58	31	9		55	31	12		53	32	10		
	59	32	3		56	32	4		54	33	5		
	60	32	10		57	33	2		55	34	0		
64	38	21	6		58	33	8		56	34	8		
	39	21	13		59	34	4		57	35	3		
	40	22	7		60	34	12		58	35	11		

Girth.	Len.	Weight.		Girth.	Len.	Weight.		Girth.	Len.	Weight.	
Inches	In.	Sts.	Lbs.	Inches.	In.	Sts.	Lbs.	Inches.	In.	Sts.	Lbs.
72	69	49	3	74	64	48	6	76	58	46	1
	70	49	11		65	49	0		59	46	12
	71	50	9		66	49	10		60	47	9
	72	51	5		67	50	7		61	48	7
73	50	36	9		68	51	3		62	49	4
	51	37	6		69	52	0		63	50	1
	52	38	2		70	52	10		64	50	12
	53	38	12		71	53	7		65	51	9
	54	39	8		72	54	4		66	52	6
	55	40	4		73	55	0		67	53	4
	56	41	1		74	55	11		68	54	1
	57	41	11	75	52	40	3		69	54	12
	58	42	7		53	41	0		70	55	9
	59	43	3		54	41	11		71	56	6
	60	44	0		55	42	8		72	57	5
	61	44	8		56	43	5		73	58	1
	62	45	6		57	44	2		74	58	13
	63	46	3		58	44	12		75	59	10
	64	46	13		59	45	10		76	60	6
	65	47	9		60	46	7	77	52	42	6
	66	48	5		61	47	5		53	43	3
	67	49	2		62	48	3		54	44	1
	68	49	12		63	48	13		55	44	12
	69	50	8		64	49	11		56	45	9
	70	51	4		65	50	5		57	46	7
	71	52	1		66	51	4		58	47	3
	72	52	11		67	52	0		59	48	2
	73	53	7		68	52	11		60	48	13
74	51	38	6		69	53	10		61	49	11
	52	39	2		70	54	6		62	50	8
	53	39	12		71	55	2		63	51	5
	54	40	9		72	55	12		64	52	3
	55	41	6		73	56	9		65	53	0
	56	42	3		74	57	7		66	53	12
	57	42	13		75	58	0		67	54	9
	58	43	8	76	52	41	4		68	55	7
	59	44	6		53	42	0		69	56	4
	60	45	3		54	42	13		70	57	2
	61	45	13		55	43	6		71	57	13
	62	46	10		56	44	7		72	58	10
	63	47	7		57	45	4		73	59	7

Girth.	Len.			Weight.			Girth.	Len.			Weight.				
Inches	In.	Sts.	lbs.	Inches.	In.	Sts.	lbs.	Inches.	In.	Sts.	lbs.	Inches.	In.	Sts.	lbs.
77	74	60	5	79	64	54	13	81	53	47	12				
	75	61	2		65	55	11		54	48	10				
	76	62	0		66	56	9		55	49	8				
	77	62	11		67	57	7		56	50	8				
78	53	44	5		68	58	6		57	51	7				
	54	45	2		69	59	4		58	52	5				
	55	46	1		70	60	2		59	53	3				
	56	46	12		71	61	0		60	54	2				
	57	47	9		72	61	12		61	55	1				
	58	48	6		73	62	10		62	55	13				
	59	49	3		74	63	8		63	56	12				
	60	50	0		75	64	6		64	57	11				
	61	51	1		76	65	4		65	58	9				
	62	51	11		77	66	2		66	59	7				
	63	52	10		78	67	0		67	60	5				
	64	53	9	80	53	46	9		68	61	5				
	65	54	6		54	47	8		69	62	3				
	66	55	3		55	48	6		70	63	3				
	67	56	1		56	49	4		71	64	1				
	68	56	13		57	50	3		72	64	13				
	69	57	10		58	51	1		73	65	13				
	70	58	8		59	51	13		74	66	11				
	71	59	6		60	52	12		75	67	10				
	72	60	4		61	53	10		76	68	9				
	73	61	2		62	54	8		77	69	7				
	74	61	12		63	55	7		78	70	6				
	75	62	11		64	56	5	82	53	49	1				
	76	63	9		65	57	3		54	49	13				
	77	64	6		66	58	2		55	50	12				
	78	65	4		67	59	0		56	51	11				
79	53	45	7		68	59	12		57	52	10				
	54	46	6		69	60	10		58	53	9				
	55	47	7		70	61	9		59	54	6				
	56	48	1		71	62	7		60	55	7				
	57	48	12		72	63	5		61	56	6				
	58	49	9		73	64	3		62	57	5				
	59	50	6		74	65	1		63	58	4				
	60	51	7		75	65	13		64	59	3				
	61	52	4		76	66	11		65	60	2				
	62	53	3		77	67	11		66	61	1				
	63	54	2		78	68	9		67	62	0				

Girth.	Len.			Weight.			Girth.	Len.			Weight.				
Inches.	In.	Sts.	Lbs.	Inches.	In.	Sts.	Lbs.	Inches.	In.	Sts.	Lbs.	Inches.	In.	Sts.	Lbs.
82	68	62	13	84	59	57	4	85	76	75	8				
	69	63	12		60	58	3		77	76	8				
	70	64	11		61	59	3		78	77	8				
	71	65	10		62	60	3		79	78	8				
	72	66	9		63	61	2		80	79	8				
	73	67	8		64	62	2	86	56	57	0				
	74	68	7		65	63	2		57	58	0				
	75	69	6		66	64	1		58	59	0				
	76	70	5		67	65	1		59	60	1				
	77	71	4		68	66	0		60	61	1				
	78	72	2		69	67	0		61	62	1				
83	54	51	3		70	68	0		62	63	1				
	55	52	2		71	68	13		63	64	2				
	56	53	1		72	69	13		64	64	13				
	57	54	0		73	70	12		65	65	13				
	58	54	13		74	71	12		66	67	2				
	59	55	12		75	72	12		67	68	3				
	60	56	12		76	73	11		68	69	3				
	61	57	11		77	74	11		69	70	3				
	62	58	10		78	75	10		70	71	4				
	63	59	9	85	55	54	9		71	72	4				
	64	60	8		56	55	9		72	73	4				
	65	61	7		57	56	9		73	74	4				
	66	62	6		58	57	9		74	75	5				
	67	63	5		59	58	9		75	76	5				
	68	64	4		60	59	9		76	77	5				
	69	65	3		61	60	9		77	78	5				
	70	66	5		62	61	9		78	79	5				
	71	67	4		63	62	9		79	80	6				
	72	68	3		64	63	9		80	81	6				
	73	69	3		65	64	9		81	82	6				
	74	70	2		66	65	9	87	56	58	4				
	75	71	1		67	66	9		57	59	5				
	76	72	1		68	67	9		58	60	6				
	77	73	0		69	68	9		59	61	6				
	78	76	1		70	69	9		60	62	7				
	79	77	1		71	70	8		61	63	9				
84	55	53	6		72	71	8		62	64	8				
	56	54	5		73	72	8		63	65	9				
	57	55	5		74	73	8		64	66	9				
	58	56	4		75	74	8		65	67	10				

Girth.	Len.			Weight.			Girth.	Len.			Weight.				
Inches	In.	Sta.	Lbs.	Inches.	In.	Sta.	Lbs.	Inches.	In.	Sta.	Lbs.	Inches.	In.	Sta.	Lbs.
87	66	68	10	88	82	87	5	90	74	82	7				
	67	69	11	89	58	63	3		75	83	8				
	68	70	12		59	64	5		76	84	10				
	69	71	12		60	65	5		77	85	10				
	70	72	13		61	66	7		78	86	13				
	71	73	13		62	67	8		79	88	1				
	72	75	0		63	68	9		80	89	2				
	73	76	9		64	69	11		81	90	4				
	74	77	1		65	70	12	91	59	67	3				
	75	78	1		66	71	13		60	68	5				
	76	79	2		67	73	0		61	69	7				
	77	80	3		68	74	2		62	70	9				
	78	81	4		69	75	3		63	71	11				
	79	82	4		70	76	4		64	72	13				
	80	83	5		71	77	5		65	74	1				
	81	84	5		72	78	6		66	75	3				
88	57	60	10		73	79	7		67	76	5				
	58	61	11		74	80	9		68	77	7				
	59	62	3		75	81	10		69	78	9				
	60	63	13		76	82	12		70	79	11				
	61	65	0		77	83	13		71	80	13				
	62	66	1		78	85	0		72	82	1				
	63	67	2		79	86	2		73	83	3				
	64	68	3		80	87	3		74	84	5				
	65	69	4		81	88	4		75	85	7				
	66	70	5	90	58	64	9		76	86	9				
	67	71	6		59	65	1		77	87	10				
	68	72	7		60	66	12		78	88	12				
	69	73	8		61	68	0		79	90	1				
	70	74	9		62	69	1		80	91	2				
	71	75	9		63	70	3		81	92	4				
	72	76	10		64	71	5		82	93	6				
	73	77	11		65	72	7	92	60	69	12				
	74	78	12		66	73	8		61	71	1				
	75	79	13		67	74	10		62	72	3				
	76	81	0		68	75	11		63	73	5				
	77	82	1		69	76	13		64	74	7				
	78	83	2		70	78	0		65	75	9				
	79	84	3		71	79	0		66	76	11				
	80	85	4		72	80	4		67	78	1				
	81	86	4		73	81	5		68	79	2				

TABLE

TO ASCERTAIN THE QUANTITY OF HAY IN STACKS OR
IN RICKS BY MEASUREMENT



WHEN Hay is cut and well dried, it is often put up into large Ricks in the field. If one of these of a medium size be chosen, and the dimensions carefully taken, and the quantity properly computed, the quantity in the whole field may be very accurately estimated, by multiplying the number of Ricks in the field by the number of Stones in this.

1. *When the body of the Stack is cylindrical and the top conical.*

RULE.—Add $\frac{1}{3}$ of the perpendicular Height of the top above the eaves, to the Height from the ground to the eaves, all in feet, for the mean height; multiply this by the square of the girt in feet, and by the decimal number .0029475, which will be the contents of the Rick in cubic yards.

Find the Girt in the left hand column, the Height in the second, the Weight in Imperial stones is opposite these two, in the third column, reckoning 7 stones to the cubic yard.

2. *When the body of the Stack resembles the conic frustum.*

RULE.—Add the squares of the Girt at the bottom, and the square of the Girt at the eaves, both in feet, and the product of these two Girts; multiply the sum by the perpendicular height of the eaves from the ground in feet; to the product add the square of the girt at the eaves multiplied by the perpendicular height of the top above the eaves; then multiply the sum by the decimal number $\cdot 0009825$, this will give the contents in cubic yards.

TABLE

TO ASCERTAIN THE QUANTITY OF HAY IN STACKS OR
IN RICKS BY MEASUREMENT.

Girt.	Height.	Weight.	Girt.	Height.	Weight.	Girt.	Height.	Weight.
12	6	30	15	6	48	17	9	92
	7	36		7	55		10	102
	8	41		8	63		11	113
	9	46		9	72		12	123
	10	51		10	79		13	132
	11	56		11	87		14	142
	12	61		12	96		15	152
13	6	36	16	13	102	18	16	162
	7	41		14	111		17	173
	8	48		15	120		6	68
	9	53		6	55		7	80
	10	60		7	63		8	91
	11	65		8	72		9	103
	12	72		9	80		10	115
14	13	77	17	10	91	19	11	127
	6	41		11	99		12	137
	7	48		12	108		13	149
	8	55		13	116		14	161
	9	61		14	127		15	171
	10	68		15	135		16	183
	11	77		16	144		17	197
12	84	6	61	18	207			
13	90	7	72	6	77			
14	97	8	82	7	89			

Grs.	Height.	Weight.	Girt.	Height.	Weight.	Girt.	Height.	Weight.
19	8	103	21	21	329	24	15	305
	9	115	22	6	103		16	325
	10	127		7	120		17	346
	11	140		8	137		18	367
	12	152		9	154		19	387
	13	166		10	171		20	408
	14	178		11	188		21	428
	15	192		12	205	25	6	132
	16	204		13	223		7	154
	17	217		14	240		8	176
	18	229		15	257		9	200
	19	241		16	274		10	221
20	6	85		17	291		11	243
	7	99		18	308		12	265
	8	113		19	325		13	289
	9	127		20	343		14	305
	10	142		21	345		15	331
	11	156	23	6	113		16	351
	12	167		7	132		17	375
	13	183		8	151		18	397
	14	199		9	169		19	420
	15	212		10	190		20	442
	16	226		11	207		21	464
	17	240		12	226	26	6	144
	18	255		13	245		7	168
	19	269		14	264		8	192
	20	283		15	283		9	216
21	6	92		16	301		10	238
	7	111		17	319		11	262
	8	123		18	337		12	286
	9	140		19	356		13	310
	10	156		20	373		14	334
	11	171		21	392		15	349
	12	187	24	6	121		16	382
	13	202		7	142		17	406
	14	217		8	162		18	430
	15	223		9	183		19	454
	16	248		10	204		20	478
	17	264		11	224		21	502
	18	281		12	245	27	6	154
	19	296		13	264		7	180
	20	312		14	284		8	205

Girt.	Height.	Weight.	Girt.	Height.	Weight.	Girt.	Height.	Weight.
27	9	231	29	19	564	32	13	469
	10	257		20	594		14	505
	11	282		21	624		15	541
	12	308	30	6	190		16	579
	13	334		7	223		17	615
	14	360		8	252		18	651
	15	387		9	284		19	697
	16	413		10	317		20	723
	17	438		11	348		21	759
	18	464		12	380	33	6	231
	19	490		13	413		7	269
	20	526		14	444		8	308
	21	541		15	475		9	346
28	6	166		16	507		10	384
	7	194		17	540		11	423
	8	221		18	570		12	461
	9	248		19	603		13	500
	10	276		20	636		14	538
	11	305		21	668		15	578
	12	332	31	6	204		16	615
	13	360		7	238		17	653
	14	387		8	272		18	692
	15	414		9	305		19	730
	16	444		10	339		20	769
	17	471		11	373		21	807
	18	498		12	408	34	6	245
	19	526		13	442		7	286
	20	553		14	474		8	325
	21	581		15	509		9	368
29	6	178		16	543		10	408
	7	207		17	577		11	449
	8	236		18	612		12	490
	9	267		19	646		13	531
	10	296		20	679		14	572
	11	327		21	713		15	613
	12	357	32	6	217		16	653
	13	387		7	255		17	694
	14	416		8	289		18	735
	15	445		9	325		19	774
	16	476		10	361		20	803
	17	484		11	397		21	859
	18	534		12	433	35	6	260

Girt.	Height.	Weight.	Girt.	Height.	Weight.	Girt.	Height.	Weight.
35	7	303	37	15	728	39	19	970
	8	344		16	773		20	1076
	9	389		17	823		21	1128
	10	433		18	870		22	1182
	11	476		19	919		23	1236
	12	519		20	968		24	1291
	13	562		21	1016		25	1344
	14	605		22	1066	40	7	396
	15	649		23	1105		8	452
	16	692		24	1162		9	509
	17	737		25	1210		10	565
	18	778	38	7	356		11	627
	19	823		8	408		12	679
	20	865		9	459		13	735
	21	908		10	510		14	792
36	7	320		11	560		15	842
	8	367		12	612		16	905
	9	413		13	663		17	961
	10	457		14	700		18	1017
	11	504		15	766		19	1075
	12	550		16	817		20	1133
	13	596		17	869		21	1189
	14	641		18	918		22	1246
	15	687		19	970		23	1304
	16	733		20	1021		24	1361
	17	780		21	1071		25	1417
	18	821		22	1123	41	7	414
	19	870		23	1174		8	474
	20	917		24	1225		9	534
	21	961		25	1277		10	594
	22	1008	39	7	375		11	653
	23	1054		8	428		12	713
	24	1100		9	483		13	773
	25	1134		10	538		14	831
37	7	339		11	591		15	891
	8	344		12	646		16	951
	9	435		13	699		17	1009
	10	483		14	781		18	1069
	11	531		15	807		19	1129
	12	581		16	860		20	1189
	13	629		17	913		21	1248
	14	677		18	968		22	1308

Girt.	Height.	Weight.	Girt.	Height.	Weight.	Girt.	Height.	Weight.
41	23	1366	44	8	548	46	12	900
	24	1426		9	617		13	973
	25	1484		10	684		14	1049
42	7	437		11	752		15	1124
	8	499		12	821		16	1198
	9	560		13	889		17	1272
	10	624		14	958		18	1349
	11	685		15	1027		19	1422
	12	749		16	1094		20	1496
	13	810		17	1164		21	1572
	14	872		18	1239		22	1645
	15	884		19	1301		23	1721
	16	936		20	1369		24	1794
	17	1061		21	1438		25	1870
	18	1123		22	1507	47	7	550
	19	1184		23	1575		8	627
	20	1248		24	1644		9	704
	21	1309		25	1712		10	783
	22	1373	45	7	500		11	860
	23	1484		8	572		12	939
	24	1500		9	644		13	1016
	25	1563		10	716		14	1095
43	7	457		11	785		15	1172
	8	521		12	859		16	1251
	9	588		13	931		17	1330
	10	653		14	1003		18	1407
	11	720		15	1074		19	1486
	12	785		16	1145		20	1561
	13	850		17	1217		21	1639
	14	915		18	1232		22	1717
	15	980		19	1359		23	1796
	16	1045		20	1431		24	1875
	17	1110		21	1503		25	1954
	18	1178		22	1575	48	7	569
	19	1237		23	1642		8	651
	20	1306		24	1717		9	733
	21	1373		25	1789		10	814
	22	1438	46	7	524		11	894
	23	1503		8	598		12	977
	24	1570		9	673		13	1059
	25	1635		10	749		14	1140
44	7	480		11	823		15	1222

Girt.	Height.	Weight.	Girt.	Height.	Weight.	Girt.	Height.	Weight.	
48	16	1301	50	21	1856	53	7	687	
	17	1385		22	1944		8	795	
	18	1465		23	2033		9	893	
	19	1548		24	2120		10	992	
	20	1630		25	2209		11	1092	
	21	1712		51	7		646	12	1191
	22	1793			8		737	13	1290
	23	1875			9		829	14	1386
	24	1956			10		920	15	1489
	25	2038			11		1011	16	1589
49	7	596	51	12	1104	54	17	1688	
	8	680		13	1196		18	1787	
	9	764		14	1287		19	1857	
	10	847		15	1380		20	1986	
	11	934		16	1470		21	2086	
	12	1018		17	1549		22	2185	
	13	1102		18	1656		23	2285	
	14	1188		19	1746		24	2356	
	15	1275		20	1839		25	2484	
	16	1359		21	1932		7	723	
17	1488	22	2022	8	826				
18	1529	23	2115	9	914				
19	1614	24	2206	10	1032				
20	1694	25	2300	11	1134				
50	21	1782	52	7	668	55	12	1237	
	22	1868		8	764		13	1340	
	23	1954		9	860		14	1443	
	24	2038		10	956		15	1546	
	25	2124		11	1052		16	1649	
	7	618		12	1146		17	1753	
	8	708		13	1242		18	1856	
	9	795		14	1434		19	1959	
	10	884		15	1481		20	2062	
	11	972		16	1514		21	2165	
12	1061	17	1625	22	2268				
13	1148	18	1721	23	2372				
14	1237	19	1815	24	2461				
15	1326	20	1909	25	2578				
16	1414	21	2004	7	747				
17	1501	22	2101	8	857				
18	1590	23	2196	9	961				
19	1680	24	2297	10	1069				
20	1767	25	2400	11	1176				

Girt.	Height.	Weight.	Girt.	Height.	Weight.	Girt.	Height.	Weight.	
55	12	1284	57	17	1952	59	22	2708	
	13	1390		18	2067		23	2830	
	14	1498		19	2182		24	2953	
	15	1604		20	2297		25	3077	
	16	1710		21	2412		60	7	891
	17	1819		22	2526	8		1018	
	18	1923		23	2641	9		1145	
	19	2033		24	2756	10		1273	
	20	2139		25	2871	11		1400	
	56	21		2239	58	7	833	12	1527
		22		2346		8	951	13	1650
		23		2453		9	1071	14	1782
		24		2561		10	1189	15	1909
		25		2667		11	1308	16	2036
		7		776	12	1428	17	2163	
		8	888	13	1546	18	2192		
		9	929	14	1666	19	2424		
		10	1109	15	1784	20	2545		
		11	1220	16	1902	21	2672		
		12	1330	17	2022	22	2801		
		13	1441	18	2141	23	2928		
		14	1553	19	2259	24	3054		
		15	1662	20	2379	25	3183		
		16	1774	21	2491	61	7	920	
		17	1885	22	2617		8	1052	
18		1997	23	2736	9		1184		
19		2108	24	2842	10		1316		
20		2218	25	2974	11		1446		
57		21	2329	59	7	862	12	1580	
		22	2439		8	984	13	1710	
		23	2550		9	1107	14	1846	
		24	2662		10	1215	15	1973	
		25	2773		11	1354	16	2105	
		7	804	12	1477	17	2237		
	8	918	13	1601	18	2369			
	9	1033	14	1722	19	2495			
	10	1142	15	1840	20	2631			
	11	1263	16	1969	21	2763			
	12	1378	17	2092	22	2893			
	13	1493	18	2214	23	3025			
	14	1608	19	2338	24	3157			
	15	1722	20	2461	25	3289			
	16	1837	21	2585					

TABLE

FOR ASCERTAINING THE QUANTITY OF HAY IN STACKS
OF AN OBLONG FORM.



In measuring the Length, Breadth, and Height—To find the mean height, add only half the perpendicular height from the eaves to the top, to the height from the ground to the eaves. Opposite the length, breadth, and height thus found in feet, you have the Weight in Imperial Stones.

TABLE

FOR ASCERTAINING THE QUANTITY OF HAY IN STACKS
OF AN OBLONG FORM.

Len.	B.	H.	Weight.	Len.	B.	H.	Weight.	Len.	B.	H.	Weight.	
12	8	6	256	15	14	12	1120	18	11	9	792	
	9	7	336		15	13	1300		12	10	960	
	10	8	427		16	8	6		341	13	11	1144
	11	9	528			9	7		448	14	12	1344
	12	10	640			10	8		569	15	13	1560
13	8	6	277	17	11	9	704	19	16	14	1792	
	9	7	364		12	10	853		17	16	2040	
	10	8	462		13	11	1017		18	17	2304	
	11	9	572		14	12	1194		8	6	405	
	12	10	693		15	13	1386		9	7	532	
14	13	11	826	18	16	14	1593	20	10	8	675	
	8	6	299		8	6	362		11	9	836	
	9	7	392		9	7	476		12	10	1013	
	10	8	497		10	8	604		13	11	1207	
	11	9	616		11	9	748		14	12	1418	
15	12	10	747	19	12	10	786	21	15	13	1646	
	13	11	890		13	11	1081		16	14	1891	
	14	12	1045		14	12	1269		17	15	2153	
	8	6	320		15	13	1473		18	16	2432	
	9	7	420		16	14	1692		19	17	2727	
16	10	8	533	20	17	15	1926	22	8	6	426	
	11	9	660		8	6	384		9	7	560	
	12	10	800		9	7	504		10	8	711	
	13	11	953		10	8	640		11	9	879	

Len.	B.	H.	Weight.	Len.	B.	H.	Weight.	Len.	B.	H.	Weight.			
20	12	10	1066	23	12	10	1226	25	21	19	4433			
	13	11	1270			13	11		1462		22	20	4888	
	14	12	1493			14	12		1717		23	21	5366	
	15	13	1733			15	13		1993		24	22	5866	
	16	14	1991			16	14		2289		25	23	6389	
	17	15	2266			17	15		2606	26	8	6	554	
	18	16	2560			18	16		2944			9	7	728
	19	17	2870			19	17		3301			10	8	924
	20	18	3200			20	18		3680			11	9	1144
21	8	6	448			21	19		4078			12	10	1386
	9	7	588		22	20	4497		13		11	1652		
	10	8	746		23	21	4937		14		12	1941		
	11	9	924	24	8	6	512		15		13	2253		
	12	10	1120			9	7	672			16	14	2588	
	13	11	1333			10	8	854			17	15	2946	
	14	12	1568			11	9	1056		18	16	3328		
	15	13	1819			12	10	1280		19	17	3731		
	16	14	2090			13	11	1525		20	18	4160		
	17	15	2380			14	12	1792		21	19	4610		
18	16	2688			15	13	2080		22	20	5084			
19	17	3014			16	14	2388		23	21	5581			
20	18	3360			17	15	2720		24	22	6101			
22	21	19	3724		18	16	3072		25	23	6644			
	8	6	469		19	17	3444	27	26	24	7210			
	9	7	616		20	18	3840			8	6	576		
	10	8	782		21	19	4256			9	7	756		
	11	9	968		22	20	4693			10	8	960		
	12	10	1173		23	21	5152			11	9	1188		
	13	11	1398		24	22	5632			12	10	1440		
	14	12	1642	25	8	6	533			13	11	1716		
	15	13	1906			9	7		700		14	12	2016	
	16	14	2190			10	8		889		15	13	2340	
17	15	2493			11	9	1100			16	14	2688		
18	16	2816			12	10	1333		17	15	3060			
19	17	3158			13	11	1588		18	16	3456			
20	18	3520			14	12	1866		19	17	3875			
21	19	3901			15	13	2166		20	18	4320			
22	20	4302			16	14	2488		21	19	4788			
23	8	6	490			17	15	2832		22	20	5279		
	9	7	644		18	16	3200		23	21	5796			
	10	8	818		19	17	3587		24	22	6336			
	11	9	1012		20	18	4000		25	23	6900			

Len.	B.	H.	Weight.	Len.	B.	H.	Weight.	Len.	B.	H.	Weight.
27	26	24	7488	29	27	25	8700	31	24	22	7274
	27	25	8100		28	26	9383		25	23	7922
28	8	6	597		29	27	10092		26	24	8597
	9	7	784	30	8	6	639		27	25	9300
	10	8	996		9	7	840		28	26	10030
	11	9	1232		10	8	1067		29	27	10788
	12	10	1493		11	9	1320		30	28	11573
	13	11	1779		12	10	1599		31	29	12386
	14	12	2089		13	11	1906	32	8	6	682
	15	13	2426		14	12	2239		9	7	896
	16	14	2786		15	13	2599		10	8	1138
	17	15	3173		16	14	2986		11	9	1408
	18	16	3584		17	15	3400		12	10	1706
	19	17	4018		18	16	3840		13	11	2034
	20	18	4480		19	17	4304		14	12	2388
	21	19	4965		20	18	4800		15	13	2772
	22	20	5475		21	19	5319		16	14	3186
	23	21	6010		22	20	5866		17	15	3626
	24	22	6570		23	21	6439		18	16	4096
	25	23	7155		24	22	7039		19	17	4592
	26	24	7765		25	23	7667		20	18	5120
	27	25	8400		26	24	8320		21	19	5674
	28	26	9059		27	25	9000		22	20	6257
29	8	6	618		28	26	9706		23	21	6869
	9	7	812		29	27	10440		24	22	7509
	10	8	1031		30	28	11199		25	23	8177
	11	9	1276	31	8	6	660		26	24	8874
	12	10	1546		9	7	868		27	25	9600
	13	11	1842		10	8	1102		28	26	10353
	14	12	2165		11	9	1363		29	27	11136
	15	13	2513		12	10	1653		30	28	11946
	16	14	2886		13	11	1969		31	29	12786
	17	15	3286		14	12	2314		32	30	13653
	18	16	3712		15	13	2686	33	8	6	704
	19	17	4162		16	14	3085		9	7	924
	20	18	4640		17	15	3512		10	8	1173
	21	19	5142		18	16	3966		11	9	1452
	22	20	5670		19	17	4450		12	10	1758
	23	21	6224		20	18	4959		13	11	2097
	24	22	6805		21	19	5497		14	12	2464
	25	23	7411		22	20	6061		15	13	2860
	26	24	8042		23	21	6654		16	14	3285

Len.	B.	H.	Weight.	Len.	B.	H.	Weight.	Len.	B.	H.	Weight.
33	17	15	3740	34	33	31	15458	36	20	18	5760
	18	16	4224		34	32	16440		21	19	6384
	19	17	4736	35	8	6	745		22	20	7038
	20	18	5280		9	7	980		23	21	7728
	21	19	5852		10	8	1245		24	22	8448
	22	20	6452		11	9	1541		25	23	9199
	23	21	7084		12	10	1865		26	24	9984
	24	22	7744		13	11	2223		27	25	10800
	25	23	8433		14	12	2612		28	26	11648
	26	24	9152		15	13	3032		29	27	12528
	27	25	9900		16	14	3483		30	28	13440
	28	26	10677		17	15	3966		31	29	14384
	29	27	11484		18	16	4480		32	30	15360
	30	28	12220		19	17	5022		33	31	16368
	31	29	13185		20	18	5600		34	32	17408
	32	30	14080		21	19	6205		35	33	18480
	33	31	15004		22	20	6843		36	34	19584
34	8	6	725		23	21	7512	37	8	6	788
	9	7	952		24	22	8213		9	7	1036
	10	8	1209		25	23	8945		10	8	1314
	11	9	1496		26	24	9706		11	9	1628
	12	10	1813		27	25	10500		12	10	1973
	13	11	2160		28	26	11323		13	11	2351
	14	12	2538		29	27	12180		14	12	2761
	15	13	2946		30	28	13066		15	13	3205
	16	14	3384		31	29	13984		16	14	3683
	17	15	3853		32	30	14933		17	15	4193
	18	16	4352		33	31	15913		18	16	4736
	19	17	4879		34	32	16924		19	17	5310
	20	18	5440		35	33	17966		20	18	5920
	21	19	6029	36	8	6	768		21	19	6560
	22	20	6648		9	7	1008		22	20	7234
	23	21	7298		10	8	1279		23	21	7942
	24	22	7978		11	9	1584		24	22	8682
	25	23	8688		12	10	1920		25	23	9456
	26	24	9429		13	11	2288		26	24	10260
	27	25	10200		14	12	2688		27	25	11100
	28	26	11000		15	13	3120		28	26	11970
	29	27	11832		16	14	3584		29	27	12876
	30	28	12693		17	15	4080		30	28	13812
	31	29	13584		18	16	4608		31	29	14783
	32	30	14506		19	17	5166		32	30	15786

Len.	B.	H.	Weight.	Len.	B.	H.	Weight.	Len.	B.	H.	Weight.
37	33	31	16822	38	37	35	21871	40	8	6	852
	34	32	17892		38	36	23103		9	7	1120
	35	33	18984	39	8	6	832		10	8	1422
	36	34	19328		9	7	1092		11	9	1758
	37	35	21295		10	8	1385		12	10	2132
38	8	6	810		11	9	1716		13	11	2540
	9	7	1064		12	10	2080		14	12	2986
	10	8	1350		13	11	2478		15	13	3466
	11	9	1672		14	12	2912		16	14	3982
	12	10	2026		15	13	3380		17	15	4532
	13	11	2414		16	14	3882		18	16	5120
	14	12	2837		17	15	4420		19	17	5741
	15	13	3293		18	16	4992		20	18	6400
	16	14	3782		19	17	5596		21	19	7093
	17	15	4306		20	18	6240		22	20	7820
	18	16	4864		21	19	6916		23	21	8586
	19	17	5454		22	20	7625		24	22	9386
	20	18	6080		23	21	8372		25	23	10221
	21	19	6738		24	22	9152		26	24	11094
	22	20	7430		25	23	9965		27	25	12000
	23	21	8156		26	24	10816		28	26	12942
	24	22	8917		27	25	11700		29	27	13920
	25	23	9710		28	26	12618		30	28	14933
	26	24	10538		29	27	13572		31	29	15982
	27	25	11400		30	28	14560		32	30	17067
	28	26	12294		31	29	15583		33	31	18186
	29	27	13224		32	30	16640		34	32	19342
	30	28	14186		33	31	17732		35	33	20533
	31	29	15182		34	32	18859		36	34	21760
	32	30	16213		35	33	20020		37	35	23022
	33	31	17277		36	34	21216		38	36	24320
	34	32	18373		37	35	22446		39	37	25653
	35	33	19506		38	36	23712		40	38	27022
	36	34	20672		39	37	25012				

TABLE

FOR VALUING ANY QUANTITY OF LAND AT ANY RATE
PER ACRE.

The left hand column contains the quantity of land, and the other columns the values at different rates per acre.

EXAMPLE.

Required the value of 29 acres, 3 roods, 37 poles, at the rate of £3 per acre. Under £3 at the top and opposite to

20 acres.....	£60	0	0
9 acres.....	27	0	0
3 roods.....	2	5	0
30 poles.....	0	11	3
7 poles.....	0	2	7½
Value,	£89	18	10½

A farmer lets out 13 acres, 3 roods, 17 poles, of a corn field to be reaped, at the rate of 7/6 per acre; what must he pay for the whole?

13 acres, 3 roods, 17 poles, at 7/6.

10 acres.....	£3	10	0
3 acres.....	1	1	0
3 roods.....	0	5	3
10 poles.....	0	0	5¼
7 poles.....	0	0	3½
10 acres at 6d....	0	5	0
3 acres at 6d....	0	1	6
3 roods.....	0	0	4½
10 poles.....	0	0	0¼
7 poles.....	0	0	0¼
Amount,	£5	3	10¾

A purchase is made of 74 acres, 2 roods, 17 poles, at the rate of £80 : 5 : 6 per acre; required the value of the whole?

74 acres, 2 roods, 17 poles.

70 acres	{	40.....	£3200	0	0
		30.....	2400	0	0
		4 acres	320	0	0
		2 roods	40	0	0
		10 poles	5	0	0
		7 poles	3	10	0
70 acres	{	40 at 5/.....	10	0	0
		30 at 5/.....	7	10	0
		4 acres at 5/.....	1	0	0
		2 roods at 5/.....	0	2	6
		10 poles at 5/.....	0	0	3 $\frac{3}{4}$
		7 poles at 5/.....	0	0	2 $\frac{1}{2}$
70 acres	{	40 acres at 6d.....	1	0	0
		30 acres at 6d.....	0	15	0
		4 acres at 6d.....	0	2	0
		2 roods at 6d.....	0	0	3
		10 poles at 6d.....	0	0	0 $\frac{1}{4}$
		7 poles at 6d.....	0	0	0 $\frac{1}{4}$
			<hr/>		
			£5989	0	3 $\frac{3}{4}$ Ans.

Quantity of Land.			At $\frac{1}{6}$ per Acre.			At $\frac{1}{5}$ per Acre.			At $\frac{2}{5}$ per Acre.			At $\frac{3}{5}$ per Acre.		
A.	R.	P.	L.	s.	d.	L.	s.	d.	L.	s.	d.	L.	s.	d.
—	—	1	0	0	0	0	0	0	0	0	0	0	0	0
—	—	2	0	0	0	0	0	0	0	0	0	0	0	0
—	—	3	0	0	0	0	0	0	0	0	0	0	0	0
—	—	4	0	0	0	0	0	0	0	0	0	0	0	0
—	—	5	0	0	0	0	0	0	0	0	0	0	0	1
—	—	6	0	0	0	0	0	0	0	0	0	0	0	1
—	—	7	0	0	0	0	0	0	0	0	1	0	0	1
—	—	8	0	0	0	0	0	0	0	0	1	0	0	1
—	—	9	0	0	0	0	0	0	0	0	1	0	0	2
—	—	10	0	0	0	0	0	0	0	0	1	0	0	2
—	—	20	0	0	0	0	0	1	0	0	3	0	0	4
—	—	30	0	0	1	0	0	2	0	0	4	0	0	6
—	1	—	0	0	1	0	0	3	0	0	6	0	0	9
—	2	—	0	0	3	0	0	6	0	1	0	0	1	6
—	3	—	0	0	4	0	0	9	0	1	6	0	2	3
1	—	—	0	0	6	0	1	0	0	2	0	0	3	0
2	—	—	0	1	0	0	2	0	0	4	0	0	6	0
3	—	—	0	1	6	0	3	0	0	6	0	0	9	0
4	—	—	0	2	0	0	4	0	0	8	0	0	12	0
5	—	—	0	2	6	0	5	0	0	10	0	0	15	0
6	—	—	0	3	0	0	6	0	0	12	0	0	18	0
7	—	—	0	3	6	0	7	0	0	14	0	1	1	0
8	—	—	0	4	0	0	8	0	0	16	0	1	4	0
9	—	—	0	4	6	0	9	0	0	18	0	1	7	0
10	—	—	0	5	0	0	10	0	1	0	0	1	10	0
20	—	—	0	10	0	1	0	0	2	0	0	3	0	0
30	—	—	0	15	0	1	10	0	3	0	0	4	10	0
40	—	—	1	0	0	2	0	0	4	0	0	6	0	0
50	—	—	1	5	0	2	10	0	5	0	0	7	10	0
60	—	—	1	10	0	3	0	0	6	0	0	9	0	0

Quantity of Land.			At 4/ per Acre.			At 5/ per Acre.			At 6/ per Acre.		
A.	R.	P.	L.	s.	d.	L.	s.	d.	L.	s.	d.
—	—	1	0	0	0 $\frac{1}{4}$	0	0	0 $\frac{1}{4}$	0	0	0 $\frac{1}{4}$
—	—	2	0	0	0 $\frac{1}{2}$	0	0	0 $\frac{1}{2}$	0	0	0 $\frac{1}{2}$
—	—	3	0	0	0 $\frac{3}{4}$	0	0	1	0	0	1 $\frac{1}{4}$
—	—	4	0	0	1	0	0	1 $\frac{1}{4}$	0	0	1 $\frac{3}{4}$
—	—	5	0	0	1 $\frac{1}{2}$	0	0	1 $\frac{1}{2}$	0	0	2 $\frac{1}{4}$
—	—	6	0	0	1 $\frac{3}{4}$	0	0	2 $\frac{1}{4}$	0	0	2 $\frac{1}{2}$
—	—	7	0	0	2	0	0	2 $\frac{1}{2}$	0	0	3
—	—	8	0	0	2 $\frac{1}{4}$	0	0	3	0	0	3 $\frac{1}{2}$
—	—	9	0	0	2 $\frac{1}{2}$	0	0	3 $\frac{1}{4}$	0	0	4
—	—	10	0	0	3	0	0	3 $\frac{1}{2}$	0	0	4 $\frac{1}{2}$
—	—	20	0	0	6	0	0	7 $\frac{1}{2}$	0	0	9
—	—	30	0	0	9	0	0	11 $\frac{1}{4}$	0	1	11 $\frac{1}{2}$
—	1	—	0	1	0	0	1	3	0	1	6
—	2	—	0	2	0	0	2	6	0	3	0
—	3	—	0	3	0	0	3	9	0	4	6
1	—	—	0	4	0	0	5	0	0	6	0
2	—	—	0	8	0	0	10	0	0	12	0
3	—	—	0	12	0	0	15	0	0	18	0
4	—	—	0	16	0	1	0	0	1	4	0
5	—	—	1	0	0	1	5	0	1	10	0
6	—	—	1	4	0	1	10	0	1	16	0
7	—	—	1	8	0	1	15	0	2	2	0
8	—	—	1	12	0	2	0	0	2	8	0
9	—	—	1	16	0	2	5	0	2	14	0
10	—	—	2	0	0	2	10	0	3	0	0
20	—	—	4	0	0	5	0	0	6	0	0
30	—	—	6	0	0	7	10	0	9	0	0
40	—	—	8	0	0	10	0	0	12	0	0
50	—	—	10	0	0	12	10	0	15	0	0
60	—	—	12	0	0	15	0	0	18	0	0

Quantity of Land.			At 7/ per Acre.			At 8/ per Acre.			At 9/ per Acre.		
A.	B.	P.	L.	s.	d.	L.	s.	d.	L.	s.	d.
—	—	1	0	0	0 $\frac{1}{2}$	0	0	0 $\frac{1}{2}$	0	0	0 $\frac{1}{2}$
—	—	2	0	0	1	0	0	1	0	0	1 $\frac{1}{4}$
—	—	3	0	0	1 $\frac{1}{2}$	0	0	1 $\frac{3}{4}$	0	0	2
—	—	4	0	0	2	0	0	2 $\frac{1}{4}$	0	0	2 $\frac{1}{2}$
—	—	5	0	0	2 $\frac{1}{2}$	0	0	3	0	0	3 $\frac{1}{4}$
—	—	6	0	0	3	0	0	3 $\frac{1}{2}$	0	0	4
—	—	7	0	0	3 $\frac{1}{2}$	0	0	4	0	0	4 $\frac{1}{2}$
—	—	8	0	0	4	0	0	4 $\frac{3}{4}$	0	0	5 $\frac{1}{4}$
—	—	9	0	0	4 $\frac{1}{2}$	0	0	5 $\frac{1}{4}$	0	0	6
—	—	10	0	0	5 $\frac{1}{4}$	0	0	6	0	0	6 $\frac{3}{4}$
—	—	20	0	0	10 $\frac{1}{4}$	0	1	0	0	1	1 $\frac{1}{2}$
—	—	30	0	1	3 $\frac{3}{4}$	0	1	6	0	1	8 $\frac{1}{4}$
—	1	—	0	1	9	0	2	0	0	2	3
—	2	—	0	3	6	0	4	0	0	4	6
—	3	—	0	5	3	0	6	0	0	6	9
1	—	—	0	7	0	0	8	0	0	9	0
2	—	—	0	14	0	0	16	0	0	18	0
3	—	—	1	1	0	1	4	0	1	7	0
4	—	—	1	8	0	1	12	0	1	16	0
5	—	—	1	15	0	2	0	0	2	5	0
6	—	—	2	2	0	2	8	0	2	14	0
7	—	—	2	9	0	2	16	0	3	3	0
8	—	—	2	16	0	3	4	0	3	12	0
9	—	—	3	3	0	3	12	0	4	1	0
10	—	—	3	10	0	4	0	0	4	10	0
20	—	—	7	0	0	8	0	0	9	0	0
30	—	—	10	10	0	12	0	0	13	10	0
40	—	—	14	0	0	16	0	0	18	0	0
50	—	—	17	10	0	20	0	0	22	10	0
60	—	—	21	0	0	24	0	0	27	0	0

Quantity of Land.			At 10/ per Acre.			At 11/ per Acre.			At 12/ per Acre.		
A.	R.	P.	L.	s.	d.	L.	s.	d.	L.	s.	d.
—	—	1	0	0	0 $\frac{3}{4}$	0	0	0 $\frac{3}{4}$	0	0	0 $\frac{3}{4}$
—	—	2	0	0	1 $\frac{1}{2}$	0	0	1 $\frac{1}{2}$	0	0	1 $\frac{3}{4}$
—	—	3	0	0	2 $\frac{1}{4}$	0	0	2 $\frac{1}{4}$	0	0	2 $\frac{1}{2}$
—	—	4	0	0	3	0	0	3 $\frac{1}{4}$	0	0	3 $\frac{1}{2}$
—	—	5	0	0	3 $\frac{3}{4}$	0	0	4	0	0	4 $\frac{1}{2}$
—	—	6	0	0	4 $\frac{1}{2}$	0	0	4 $\frac{3}{4}$	0	0	5 $\frac{1}{4}$
—	—	7	0	0	5 $\frac{1}{4}$	0	0	5 $\frac{3}{4}$	0	0	6 $\frac{1}{4}$
—	—	8	0	0	6	0	0	6 $\frac{1}{2}$	0	0	7
—	—	9	0	0	6 $\frac{3}{4}$	0	0	7 $\frac{1}{4}$	0	0	8
—	—	10	0	0	7 $\frac{1}{2}$	0	0	8 $\frac{1}{4}$	0	0	9
—	—	20	0	1	3	0	1	4 $\frac{1}{4}$	0	1	6
—	—	30	0	1	10 $\frac{1}{2}$	0	2	0 $\frac{3}{4}$	0	2	3
—	1	—	0	2	6	0	2	9	0	3	0
—	2	—	0	5	0	0	5	6	0	6	0
—	3	—	0	7	6	0	8	3	0	9	0
1	—	—	0	10	0	0	11	0	0	12	0
2	—	—	1	0	0	1	2	0	1	4	0
3	—	—	1	10	0	1	13	0	1	16	0
4	—	—	2	0	0	2	4	0	2	8	0
5	—	—	2	10	0	2	15	0	3	0	0
6	—	—	3	0	0	3	6	0	3	12	0
7	—	—	3	10	0	3	17	0	4	4	0
8	—	—	4	0	0	4	8	0	4	16	0
9	—	—	4	10	0	4	19	0	5	8	0
10	—	—	5	0	0	5	10	0	6	0	0
20	—	—	10	0	0	11	0	0	12	0	0
30	—	—	15	0	0	16	10	0	18	0	0
40	—	—	20	0	0	22	0	0	24	0	0
50	—	—	25	0	0	27	10	0	30	0	0
60	—	—	30	0	0	33	0	0	36	0	0

Quantity of Land.			At 13/ per Acre.			At 14/ per Acre.			At 15/ per Acre.		
A.	R.	P.	L.	s.	d.	L.	s.	d.	L.	s.	d.
—	—	1	0	0	0	0	0	1	0	0	1
—	—	2	0	0	1	0	0	2	0	0	2
—	—	3	0	0	2	0	0	3	0	0	3
—	—	4	0	0	3	0	0	4	0	0	4
—	—	5	0	0	4	0	0	5	0	0	5
—	—	6	0	0	5	0	0	6	0	0	6
—	—	7	0	0	7	0	0	7	0	0	7
—	—	8	0	0	7	0	0	8	0	0	9
—	—	9	0	0	8	0	0	9	0	0	10
—	—	10	0	0	9	0	0	10	0	0	11
—	—	20	0	1	7	0	1	9	0	1	10
—	—	30	0	2	5	0	2	7	0	2	9
—	1	—	0	3	3	0	3	6	0	3	9
—	2	—	0	6	6	0	7	0	0	7	6
—	3	—	0	9	9	0	10	6	0	11	3
1	—	—	0	13	0	0	14	0	0	15	0
2	—	—	1	6	0	1	8	0	1	10	0
3	—	—	1	19	0	2	2	0	2	5	0
4	—	—	2	12	0	2	16	0	3	0	0
5	—	—	3	5	0	3	10	0	3	15	0
6	—	—	3	18	0	4	4	0	4	10	0
7	—	—	4	11	0	4	18	0	5	5	0
8	—	—	5	4	0	5	12	0	6	0	0
9	—	—	5	17	0	6	6	0	6	15	0
10	—	—	6	10	0	7	0	0	7	10	0
20	—	—	13	0	0	14	0	0	15	0	0
30	—	—	19	10	0	21	0	0	22	10	0
40	—	—	26	0	0	28	0	0	30	0	0
50	—	—	32	10	0	35	0	0	37	10	0
60	—	—	39	0	0	42	0	0	45	0	0

Quantity of Land.			At 16/ per Acre.			At 17/ per Acre.			At 18/ per Acre.		
A.	R.	P.	L.	s.	d.	L.	s.	d.	L.	s.	d.
—	—	1	0	0	1	0	0	1 $\frac{1}{4}$	0	0	1 $\frac{1}{2}$
—	—	2	0	0	2 $\frac{1}{2}$	0	0	2 $\frac{1}{2}$	0	0	2 $\frac{1}{2}$
—	—	3	0	0	3 $\frac{1}{4}$	0	0	3 $\frac{1}{4}$	0	0	4
—	—	4	0	0	4 $\frac{1}{2}$	0	0	5	0	0	5 $\frac{1}{4}$
—	—	5	0	0	6	0	0	6 $\frac{1}{4}$	0	0	6 $\frac{3}{4}$
—	—	6	0	0	7	0	0	7 $\frac{1}{4}$	0	0	8
—	—	7	0	0	8 $\frac{1}{4}$	0	0	8 $\frac{1}{4}$	0	0	9 $\frac{1}{4}$
—	—	8	0	0	9 $\frac{1}{2}$	0	0	10	0	0	10 $\frac{1}{2}$
—	—	9	0	0	10 $\frac{3}{4}$	0	0	11 $\frac{1}{4}$	0	1	0
—	—	10	0	1	0	0	1	0	0	1	1 $\frac{1}{2}$
—	—	20	0	2	0	0	2	1 $\frac{1}{2}$	0	2	3
—	—	30	0	3	0	0	3	2 $\frac{1}{4}$	0	3	4 $\frac{1}{2}$
—	1	—	0	4	0	0	4	3	0	4	6
—	2	—	0	8	0	0	8	6	0	9	0
—	3	—	0	12	0	0	12	9	0	13	6
1	—	—	0	16	0	0	17	0	0	18	0
2	—	—	1	12	0	1	14	0	1	16	0
3	—	—	2	8	0	2	11	0	2	14	0
4	—	—	3	4	0	3	8	0	3	12	0
5	—	—	4	0	0	4	5	0	4	10	0
6	—	—	4	16	0	5	2	0	5	8	0
7	—	—	5	12	0	5	19	0	6	6	0
8	—	—	6	8	0	6	16	0	7	4	0
9	—	—	7	4	0	7	13	0	8	2	0
10	—	—	8	0	0	8	10	0	9	0	0
20	—	—	16	0	0	17	0	0	18	0	0
30	—	—	24	0	0	25	10	0	27	0	0
40	—	—	32	0	0	34	0	0	36	0	0
50	—	—	40	0	0	42	10	0	45	0	0
60	—	—	48	0	0	51	0	0	54	0	0

Quantity of Land.			At 19/ per Acre.			At £1 per Acre.			At £2 per Acre.		
A.	R.	P.	L.	s.	d.	L.	s.	d.	L.	s.	d.
—	—	1	0	0	1 $\frac{1}{2}$	0	0	1 $\frac{1}{2}$	0	0	3
—	—	2	0	0	2 $\frac{3}{4}$	0	0	3	0	0	6
—	—	3	0	0	4 $\frac{1}{4}$	0	0	4 $\frac{1}{2}$	0	0	9
—	—	4	0	0	5 $\frac{1}{2}$	0	0	6	0	1	0
—	—	5	0	0	7	0	0	7 $\frac{1}{2}$	0	1	3
—	—	6	0	0	8 $\frac{1}{4}$	0	0	9	0	1	6
—	—	7	0	0	9 $\frac{1}{4}$	0	0	10 $\frac{1}{2}$	0	1	9
—	—	8	0	0	11	0	1	0	0	2	0
—	—	9	0	1	0 $\frac{1}{4}$	0	1	1 $\frac{1}{2}$	0	2	3
—	—	10	0	1	2 $\frac{1}{4}$	0	1	3	0	2	6
—	—	20	0	2	4 $\frac{1}{2}$	0	2	6	0	5	0
—	—	30	0	3	6 $\frac{3}{4}$	0	3	9	0	7	6
—	1	—	0	4	9	0	5	0	0	10	0
—	2	—	0	9	6	0	10	0	1	0	0
—	3	—	0	14	3	0	15	0	1	10	0
1	—	—	0	19	0	1	0	0	2	0	0
2	—	—	1	18	0	2	0	0	4	0	0
3	—	—	2	17	0	3	0	0	6	0	0
4	—	—	3	16	0	4	0	0	8	0	0
5	—	—	4	15	0	5	0	0	10	0	0
6	—	—	5	14	0	6	0	0	12	0	0
7	—	—	6	13	0	7	0	0	14	0	0
8	—	—	7	12	0	8	0	0	16	0	0
9	—	—	8	11	0	9	0	0	18	0	0
10	—	—	9	10	0	10	0	0	20	0	0
20	—	—	19	0	0	20	0	0	40	0	0
30	—	—	28	10	0	30	0	0	60	0	0
40	—	—	38	0	0	40	0	0	80	0	0
50	—	—	47	10	0	50	0	0	100	0	0
60	—	—	57	0	0	60	0	0	120	0	0

Quantity of Land.			At £3 per Acre.			At £4 per Acre.			At £5 per Acre.		
A.	R.	P.	L.	s.	d.	L.	s.	d.	L.	s.	d.
—	—	1	0	0	4½	0	0	6	0	0	7½
—	—	2	0	0	9	0	1	0	0	1	3
—	—	3	0	1	1½	0	1	6	0	1	10½
—	—	4	0	1	6	0	2	0	0	2	6
—	—	5	0	1	10½	0	2	6	0	3	11½
—	—	6	0	2	3	0	3	0	0	3	9
—	—	7	0	2	7½	0	3	6	0	4	4½
—	—	8	0	3	0	0	4	0	0	5	0
—	—	9	0	3	4½	0	4	6	0	5	7½
—	—	10	0	3	9	0	5	0	0	6	3
—	—	20	0	7	6	0	10	0	0	12	6
—	—	30	0	11	3	0	15	0	0	18	9
—	1	—	0	15	0	1	0	0	1	5	0
—	2	—	1	10	0	2	0	0	2	10	0
—	3	—	2	5	0	3	0	0	3	15	0
1	—	—	3	0	0	4	0	0	5	0	0
2	—	—	6	0	0	8	0	0	10	0	0
3	—	—	9	0	0	12	0	0	15	0	0
4	—	—	12	0	0	16	0	0	20	0	0
5	—	—	15	0	0	20	0	0	25	0	0
6	—	—	18	0	0	24	0	0	30	0	0
7	—	—	21	0	0	28	0	0	35	0	0
8	—	—	24	0	0	32	0	0	40	0	0
9	—	—	27	0	0	36	0	0	45	0	0
10	—	—	30	0	0	40	0	0	50	0	0
20	—	—	60	0	0	80	0	0	100	0	0
30	—	—	90	0	0	120	0	0	150	0	0
40	—	—	120	0	0	160	0	0	200	0	0
50	—	—	150	0	0	200	0	0	250	0	0
60	—	—	180	0	0	240	0	0	300	0	0

Quantity of Land.			At £6 per Acre.			At £7 per Acre.			At £8 per Acre.		
A.	B.	P.	L.	s.	d.	L.	s.	d.	L.	s.	d.
—	—	1	0	0	9	0	0	10 $\frac{1}{2}$	0	1	0
—	—	2	0	1	6	0	1	9	0	2	0
—	—	3	0	2	3	0	2	7 $\frac{1}{2}$	0	3	0
—	—	4	0	3	0	0	3	6	0	4	0
—	—	5	0	3	9	0	4	4 $\frac{1}{2}$	0	5	0
—	—	6	0	4	6	0	5	3	0	6	0
—	—	7	0	5	3	0	6	1 $\frac{1}{2}$	0	7	0
—	—	8	0	6	0	0	7	0	0	8	0
—	—	9	0	6	9	0	7	10 $\frac{1}{2}$	0	9	0
—	—	10	0	7	6	0	8	9	0	10	0
—	—	20	0	15	0	0	17	6	1	0	0
—	—	30	1	2	6	1	6	3	1	10	0
—	1	—	1	10	0	1	15	0	2	0	0
—	2	—	3	0	0	3	10	0	4	0	0
—	3	—	4	10	0	5	5	0	6	0	0
1	—	—	6	0	0	7	0	0	8	0	0
2	—	—	12	0	0	14	0	0	16	0	0
3	—	—	18	0	0	21	0	0	24	0	0
4	—	—	24	0	0	28	0	0	32	0	0
5	—	—	30	0	0	35	0	0	40	0	0
6	—	—	36	0	0	42	0	0	48	0	0
7	—	—	42	0	0	49	0	0	56	0	0
8	—	—	48	0	0	56	0	0	64	0	0
9	—	—	54	0	0	63	0	0	72	0	0
10	—	—	60	0	0	70	0	0	80	0	0
20	—	—	120	0	0	140	0	0	160	0	0
30	—	—	180	0	0	210	0	0	240	0	0
40	—	—	240	0	0	280	0	0	320	0	0
50	—	—	300	0	0	350	0	0	400	0	0
60	—	—	360	0	0	420	0	0	480	0	0

Quantity of Land.			At £9 per Acre.			At £10 per Acre.			At £20 per Acre.		
A.	R.	P.	L.	s.	d.	L.	s.	d.	L.	s.	d.
—	—	1	0	1	1½	0	1	3	0	2	6
—	—	2	0	2	3	0	2	6	0	5	0
—	—	3	0	3	4½	0	3	9	0	7	6
—	—	4	0	4	6	0	5	0	0	10	0
—	—	5	0	5	7½	0	6	3	0	12	6
—	—	6	0	6	9	0	7	6	0	15	0
—	—	7	0	7	10½	0	8	9	0	17	6
—	—	8	0	9	0	0	10	0	1	0	0
—	—	9	0	10	1½	0	11	3	1	2	6
—	—	10	0	11	3	0	12	6	1	5	0
—	—	20	1	2	6	1	5	0	2	10	0
—	—	30	1	13	9	1	17	6	3	15	0
—	1	—	2	5	0	2	10	0	5	0	0
—	2	—	4	10	0	5	0	0	10	0	0
—	3	—	6	15	0	7	10	0	15	0	0
1	—	—	9	0	0	10	0	0	20	0	0
2	—	—	18	0	0	20	0	0	40	0	0
3	—	—	27	0	0	30	0	0	60	0	0
4	—	—	36	0	0	40	0	0	80	0	0
5	—	—	45	0	0	50	0	0	100	0	0
6	—	—	54	0	0	60	0	0	120	0	0
7	—	—	63	0	0	70	0	0	140	0	0
8	—	—	72	0	0	80	0	0	160	0	0
9	—	—	81	0	0	90	0	0	180	0	0
10	—	—	90	0	0	100	0	0	200	0	0
20	—	—	180	0	0	200	0	0	400	0	0
30	—	—	270	0	0	300	0	0	600	0	0
40	—	—	360	0	0	400	0	0	800	0	0
50	—	—	450	0	0	500	0	0	1000	0	0
60	—	—	540	0	0	600	0	0	1200	0	0

Quantity of Land.			At £30 per Acre.			At £40 per Acre.			At £50 per Acre.		
A.	R.	P.	L.	s.	d.	L.	s.	d.	L.	s.	d.
—	—	1	0	3	9	0	5	0	0	6	3
—	—	2	0	7	6	0	10	0	0	12	6
—	—	3	0	11	3	0	15	0	0	18	9
—	—	4	0	15	0	1	0	0	1	5	0
—	—	5	0	18	9	1	5	0	1	11	3
—	—	6	1	2	6	1	10	0	1	17	6
—	—	7	1	6	3	1	15	0	2	3	9
—	—	8	1	10	0	2	0	0	2	10	0
—	—	9	1	13	9	2	5	0	2	16	3
—	—	10	1	17	6	2	10	0	3	2	6
—	—	20	3	15	0	5	0	0	6	5	0
—	—	30	5	12	6	7	10	0	9	7	6
—	1	—	7	10	0	10	0	0	12	10	0
—	2	—	15	0	0	20	0	0	25	0	0
—	3	—	22	10	0	30	0	0	37	10	0
1	—	—	30	0	0	40	0	0	50	0	0
2	—	—	60	0	0	80	0	0	100	0	0
3	—	—	90	0	0	120	0	0	150	0	0
4	—	—	120	0	0	160	0	0	200	0	0
5	—	—	150	0	0	200	0	0	250	0	0
6	—	—	180	0	0	240	0	0	300	0	0
7	—	—	210	0	0	280	0	0	350	0	0
8	—	—	240	0	0	320	0	0	400	0	0
9	—	—	270	0	0	360	0	0	450	0	0
10	—	—	300	0	0	400	0	0	500	0	0
20	—	—	600	0	0	800	0	0	1000	0	0
30	—	—	900	0	0	1200	0	0	1500	0	0
40	—	—	1200	0	0	1600	0	0	2000	0	0
50	—	—	1500	0	0	2000	0	0	2500	0	0
60	—	—	1800	0	0	2400	0	0	3000	0	0

Quantity of Land.			At £60 per Acre.			At £70 per Acre.			At £80 per Acre.		
A.	R.	P.	L.	s.	d.	L.	s.	d.	L.	s.	d.
—	—	1	0	7	6	0	8	9	0	10	0
—	—	2	0	15	0	0	17	6	1	0	0
—	—	3	1	2	6	1	6	3	1	10	0
—	—	4	1	10	0	1	15	0	2	0	0
—	—	5	1	17	6	2	3	9	2	10	0
—	—	6	2	5	0	2	12	6	3	0	0
—	—	7	2	12	6	3	1	3	3	10	0
—	—	8	3	0	0	3	10	0	4	0	0
—	—	9	3	7	6	3	18	9	4	10	0
—	—	10	3	15	0	4	7	6	5	0	0
—	—	20	7	10	0	8	15	0	10	0	0
—	—	30	11	5	0	13	2	6	15	0	0
—	1	—	15	0	0	17	10	0	20	0	0
—	2	—	30	0	0	35	0	0	40	0	0
—	3	—	45	0	0	52	10	0	60	0	0
1	—	—	60	0	0	70	0	0	80	0	0
2	—	—	120	0	0	140	0	0	160	0	0
3	—	—	180	0	0	210	0	0	240	0	0
4	—	—	240	0	0	280	0	0	320	0	0
5	—	—	300	0	0	350	0	0	400	0	0
6	—	—	360	0	0	420	0	0	480	0	0
7	—	—	420	0	0	490	0	0	560	0	0
8	—	—	480	0	0	560	0	0	640	0	0
9	—	—	540	0	0	630	0	0	720	0	0
10	—	—	600	0	0	700	0	0	800	0	0
20	—	—	1200	0	0	1400	0	0	1600	0	0
30	—	—	1800	0	0	2100	0	0	2400	0	0
40	—	—	2400	0	0	2800	0	0	3200	0	0
50	—	—	3000	0	0	3500	0	0	4000	0	0
60	—	—	3600	0	0	4200	0	0	4800	0	0

44 *Table for valuing any quantity of Land &c*

Quantity of Land.			At £90 per Acre.			At £100 per Acre.			At £1000 per Acre.		
A.	R.	P.	L.	s.	d.	L.	s.	d.	L.	s.	d.
—	—	1	0	11	3	0	12	6	6	5	0
—	—	2	1	2	6	1	5	0	12	10	0
—	—	3	1	13	9	1	17	6	18	15	0
—	—	4	2	5	0	2	10	0	25	0	0
—	—	5	2	16	3	3	2	6	31	5	0
—	—	6	3	7	6	3	15	0	37	10	0
—	—	7	3	18	9	4	7	6	43	15	0
—	—	8	4	10	0	5	0	0	50	0	0
—	—	9	5	1	3	5	12	6	56	5	0
—	—	10	5	12	6	6	5	0	62	10	0
—	—	20	11	5	0	12	10	0	125	0	0
—	—	30	16	17	6	18	15	0	187	10	0
—	1	—	22	10	0	25	0	0	250	0	0
—	2	—	45	0	0	50	0	0	500	0	0
—	3	—	67	10	0	75	0	0	750	0	0
1	—	—	90	0	0	100	0	0	1000	0	0
2	—	—	180	0	0	200	0	0	2000	0	0
3	—	—	270	0	0	300	0	0	3000	0	0
4	—	—	360	0	0	400	0	0	4000	0	0
5	—	—	450	0	0	500	0	0	5000	0	0
6	—	—	540	0	0	600	0	0	6000	0	0
7	—	—	630	0	0	700	0	0	7000	0	0
8	—	—	720	0	0	800	0	0	8000	0	0
9	—	—	810	0	0	900	0	0	9000	0	0
10	—	—	900	0	0	1000	0	0	10000	0	0
20	—	—	1800	0	0	2000	0	0	20000	0	0
30	—	—	2700	0	0	3000	0	0	30000	0	0
40	—	—	3600	0	0	4000	0	0	40000	0	0
50	—	—	4500	0	0	5000	0	0	50000	0	0
60	—	—	5400	0	0	6000	0	0	60000	0	0

CABBAGES.

TABLE for ascertaining the number of Cabbages that will grow upon any quantity of Land to 60 acres, at any distance between the plants, not more than 3 feet.

The distance of the plants are marked at the top, the quantity of ground is found in the left hand column, and in the angle of meeting are found the number of plants required.

EXAMPLE.

13 acres, 3 roods, and 25 poles are to be planted, the distance to be 2 feet, 6 inches.

10 acres.....	87610
3 acres.....	26283
3 roods.....	6570
20 poles.....	1095
5 poles.....	274

Number of plants 121832

Quantity of Land.			Distance, 1 foot.	Distance, 1 foot 6 in.	Distance, 2 feet.	Distance, 2 ft. 6 in.	Distance, 3 feet.
A.	R.	P.					
—	—	1	342	152	86	55	38
—	—	2	684	305	171	109	76
—	—	3	1027	457	257	164	114
—	—	4	1364	609	391	219	152
—	—	5	1711	762	428	274	190
—	—	6	2053	914	513	329	228
—	—	7	2395	1066	598	383	266
—	—	8	2737	1219	684	438	304
—	—	9	3080	1372	770	492	342
—	—	10	3422	1524	855	548	380
—	—	20	6845	3045	1711	1095	760
—	—	30	10267	4572	2566	1642	1141
—	1	—	13690	6095	3422	2190	1521
—	2	—	27880	12191	6845	4380	3042
—	3	—	41570	18285	10268	6570	4563
1	—	—	54760	24382	13690	8761	6084
2	—	—	109520	48764	27380	17522	12168
3	—	—	164280	73446	41070	26283	18252
4	—	—	219040	97528	54760	35044	24366
5	—	—	271800	121910	68450	43805	30420
6	—	—	320560	146292	82140	52566	36504
7	—	—	383320	170774	95850	61327	42588
8	—	—	438080	195056	109540	70088	48672
9	—	—	492840	219430	122330	78849	54756
10	—	—	547600	243820	136920	87610	60840
20	—	—	1095200	487640	273840	175220	121680
30	—	—	1642800	731460	410760	262830	182520
40	—	—	2190400	975280	547680	350440	243360
50	—	—	2718000	1219100	684650	438050	304200
60	—	—	3285600	1462920	828200	525660	365040

T R E E S.

TABLE showing readily what number of trees are requisite to plant any quantity of ground.

The left hand column shows the quantity of ground, the column at the top shows the distance of the trees in feet and inches.

EXAMPLE.

To plant 27 acres, 2 roods, 27 poles at the distance of 4 feet 6 inches.

20 acres.....	54180
7 acres.....	18963
2 roods.....	1350
20 poles.....	338
7 poles.....	118
	<hr/>
Number of Trees,	74949

Quantity of Land.			Distance, 3 feet 6 in.	Distance, 4 feet.	Distance, 4 feet 6 in.
A.	B.	P.			
—	—	1	28	21	17
—	—	2	56	43	34
—	—	3	84	64	51
—	—	4	112	85	68
—	—	5	140	107	84
—	—	6	168	128	101
—	—	7	196	150	118
—	—	8	223	171	135
—	—	9	251	194	152
—	—	10	279	214	169
—	—	20	559	428	338
—	—	30	834	642	507
—	1	—	1117	855	677
—	2	—	2235	1711	1350
—	3	—	3352	2566	2032
1	—	—	4470	3422	2709
2	—	—	8940	6844	5418
3	—	—	13410	10266	8127
4	—	—	17880	13688	10836
5	—	—	22350	17100	13545
6	—	—	26820	20532	16254
7	—	—	31290	23954	18963
8	—	—	35760	27376	21672
9	—	—	40230	30798	24381
10	—	—	44700	34220	27090
20	—	—	89400	68440	54180
30	—	—	134100	102660	81270
40	—	—	178800	136880	108360
50	—	—	223500	171100	135450
60	—	—	268200	205320	162540

Quantity of Land.			Distance, 5 feet.	Distance, 5 feet 6 in.	Distance, 6 feet.
A.	B.	P.			
—	—	1	14	11	10
—	—	2	27	22	18
—	—	3	41	34	28
—	—	4	54	45	38
—	—	5	68	56	47
—	—	6	82	67	57
—	—	7	96	79	66
—	—	8	109	90	76
—	—	9	123	101	85
—	—	10	137	113	95
—	—	20	274	221	190
—	—	30	411	339	286
—	1	—	548	452	381
—	2	—	1095	905	760
—	3	—	1642	1358	1140
1	—	—	2190	1810	1521
2	—	—	4380	3620	3040
3	—	—	6570	5430	4560
4	—	—	8760	7240	6080
5	—	—	10950	9050	7600
6	—	—	13140	10860	9120
7	—	—	15330	12670	10640
8	—	—	17520	14480	12160
9	—	—	19710	16290	13680
10	—	—	21900	18100	15210
20	—	—	43800	36200	30400
30	—	—	65700	54300	45600
40	—	—	87600	72400	60800
50	—	—	109500	90500	76000
60	—	—	131400	108600	91200

SLATERS' AND THATCHERS' WORK.

SLATERS' AND THATCHERS' WORK is commonly estimated by the yard, or rood of 36 square yards. The dimensions in the Table are in yards and feet. If the number of roods should be required, it is only dividing the square yards by 36, which gives roods; the remainders are square yards and feet.

To measure the roof of a House or Stack.

Take the length in feet, also the height, from the eaves to the top. Then in the column on the left, and opposite the height of the roof, the content is found in square yards and feet.

EXAMPLE.

The roof of a house is 40 feet long, and 15 feet in height, on the slant. Then under 15 on the top, and opposite 40 on the left, are found 66 yards 6 feet, for one side.

To measure the thatch of a round Stack.

Measure round the stack at the bottom of the thatch, and the distance from the eaves to the top, which must be divided by 2 for the mean height.

A stack measures 90 feet round, and 16 feet from the eaves to the top.

$$\frac{16}{2} = 8 \quad | \quad 90 \quad | \quad 80 \text{ yards the contents.}$$

TABLE

OF

SLATERS' AND THATCHERS' WORK

Ft. long.	1		2		3		4		5		6	
	yd.	f.	yd.	f.	yd.	f.	yd.	f.	yd.	f.	yd.	f.
1	0	1	0	2	0	3	0	4	0	5	0	6
2	0	2	0	4	0	6	0	8	1	1	1	3
3	0	3	0	6	1	0	1	3	1	6	2	0
4	0	4	0	8	1	3	1	7	2	2	2	6
5	0	5	1	1	1	6	2	2	2	7	3	3
6	0	6	1	3	2	0	2	6	3	3	4	0
7	0	7	1	5	2	3	3	1	3	8	4	6
8	0	8	1	7	2	6	3	5	4	4	5	3
9	1	0	2	0	3	0	4	0	5	0	6	0
10	1	1	2	2	3	3	4	4	5	5	6	6
20	2	2	4	4	6	6	8	8	11	1	13	3
30	3	3	6	6	10	0	13	3	16	6	20	0
40	4	4	8	8	13	3	17	7	22	2	26	6
50	5	5	11	1	16	6	22	2	27	7	33	3
60	6	6	13	3	20	0	26	6	33	3	40	0
70	7	7	15	5	23	3	31	1	38	8	46	6
80	8	8	17	7	26	6	35	5	44	4	53	3
90	10	0	20	0	30	0	40	0	50	0	60	0
100	11	1	22	2	33	3	44	4	55	5	66	6

Ft. long.	7		8		9		10		11		12	
	yd.	f.	yd.	f.	yd.	f.	yd.	f.	yd.	f.	yd.	f.
1	0	7	0	8	1	0	1	1	1	2	1	3
2	1	5	1	7	2	0	2	2	2	4	2	6
3	2	3	2	6	3	0	3	3	3	6	4	0
4	3	1	3	5	4	0	4	4	4	8	5	3
5	3	8	4	4	5	0	5	5	6	1	6	6
6	4	6	5	3	6	0	6	6	7	3	8	0
7	5	4	6	2	7	0	7	7	8	5	9	3
8	6	2	7	1	8	0	8	8	9	7	10	6
9	7	0	8	0	9	0	10	0	11	0	12	0
10	7	7	8	8	10	0	11	1	12	2	13	3
20	15	5	17	7	20	0	22	2	24	4	26	6
30	23	3	26	6	30	0	33	3	36	6	40	0
40	31	1	35	5	40	0	44	4	48	8	53	3
50	38	8	44	4	50	0	55	5	61	1	66	6
60	46	6	53	3	60	0	66	6	73	3	80	0
70	54	4	62	2	70	0	77	7	85	5	93	3
80	62	2	71	1	80	0	88	8	97	7	106	6
90	70	0	80	0	90	0	100	0	110	0	120	0
100	77	7	88	8	100	0	111	1	122	2	133	3
Ft. long.	13		14		15		16		17		18	
	yd.	f.	yd.	f.	yd.	f.	yd.	f.	yd.	f.	yd.	f.
1	1	4	1	5	1	6	1	7	1	8	2	0
2	2	8	3	1	3	3	3	5	3	7	4	0
3	4	3	4	6	5	0	5	3	5	6	6	0
4	5	7	6	2	6	6	7	1	7	5	8	0
5	7	2	7	7	8	3	8	8	9	4	10	0
6	8	6	9	3	10	0	10	6	11	3	12	0
7	10	1	10	8	11	6	12	4	13	2	14	0
8	11	5	12	4	13	3	14	2	15	1	16	0
9	13	0	14	0	15	0	16	0	17	0	18	0
10	14	4	15	5	16	6	17	7	18	8	20	0
20	28	8	31	1	33	3	35	5	37	7	40	0
30	43	3	46	6	50	0	53	3	56	6	60	0
40	57	7	62	2	66	6	71	1	75	5	80	0
50	72	2	77	7	83	3	88	8	94	4	100	0
60	86	6	93	3	100	0	106	6	113	3	120	0
70	101	1	108	8	116	6	124	4	132	2	140	0
80	115	5	124	4	133	3	142	2	151	1	160	0
90	130	0	140	0	150	0	160	0	170	0	180	0
100	144	4	155	5	166	6	177	7	188	8	200	0

DRAINING.

TABLE showing the number of cubic feet in one running yard of draining.

Take half the sum of the widths at the top and bottom for a mean width ; then opposite to this mean width in the left hand column, and under the depth at the top, are found the number of cubic feet in one running yard.

Wide. f. in.	Deep, 1 f. 0 in.	Deep, 1 f. 6 in.	Deep, 2 f. 0 in.	Deep, 2 f. 6 in.	Deep, 3 f. 0 in.	Deep, 3 f. 6 in.
1 0	3 0	4 6	6 0	7 6	9 0	10 6
1 6	4 6	6 9	9 0	11 3	13 6	15 9
2 0	6 0	9 0	12 0	15 0	18 0	21 0
2 6	7 6	11 3	15 0	18 9	22 6	26 3
3 0	9 0	13 6	18 0	22 6	27 0	31 6
3 6	10 6	15 9	21 0	26 3	31 6	36 9
4 0	12 0	18 0	24 0	30 0	36 0	42 0
4 6	13 6	20 3	27 0	33 9	40 6	47 3
5 0	15 0	22 6	30 0	37 6	45 0	52 6
5 6	16 6	24 9	33 0	41 3	49 6	57 9
6 0	18 0	27 0	36 0	45 0	54 0	63 0

Wide. f. in.	4 f. 0 in.	4 f. 6 in.	5 f. 0 in.	5 f. 6 in.	6 f. 0 in.
1 0	12 0	13 6	15 0	16 6	18 0
1 6	18 0	20 3	22 6	24 9	27 0
2 0	24 0	27 0	30 0	33 0	36 0
2 6	30 0	33 9	37 6	41 3	45 0
3 0	36 0	40 6	45 0	49 6	54 0
3 6	42 0	47 3	52 6	57 9	63 0
4 0	48 0	54 0	60 0	66 0	72 0
4 6	54 0	60 9	67 9	74 3	81 0
5 0	60 0	67 6	75 0	82 6	90 0
5 6	66 0	74 3	82 6	90 9	99 0
6 0	72 0	81 0	90 0	99 0	108 0

MASON WORK.

TABLE for finding the length of one rood of Mason Work in a stone wall.

Stone walls are generally contracted for at so much per rood of 36 yards; and to ascertain the number of roods in any wall not more than 10 feet high,

EXAMPLE.

If a wall is to be built 6 feet 9 inches high, what will be the expense of 20 roods at 2/ per rood?

In the table, adjoining to the height 6 feet 9 inches, are 16 yards, the length of one rood corresponding to that height, and every 16 yards is a rood, and

$$20 \times 16 = 320 = \text{£}32. \text{ Ans.}$$

A garden wall is 6 feet high, and is to be raised 9 inches higher, opposite 9 inches, is 144 yards, which is the length of one rood corresponding to that height of 9 inches, and as often as the measure of 144 yards is contained in the wall, so many roods will be in the wall of 9 inches high.

Height.		Len. of 1 rood.		Height.		Len. of 1 rd.		Height.		Len. of 1 rd.	
f.	in.	yds.	f.	in.	f.	in.	yds.	f.	in.	f.	in.
0	1	1296	0	0	3	5	31	1	10	6	9
0	2	648	0	0	3	6	30	2	8	6	10
0	3	432	0	0	3	7	30	0	5	6	11
0	4	324	0	0	3	8	29	1	4	7	0
0	5	259	0	7	3	9	28	2	4	7	1
0	6	216	0	0	3	10	28	0	6	7	2
0	7	185	0	5	3	11	27	1	9	7	3
0	8	162	0	0	4	0	27	0	0	7	4
0	9	144	0	0	4	1	26	1	4	7	5
0	10	129	1	9	4	2	25	2	9	7	6
0	11	117	2	5	4	3	25	1	3	7	7
1	0	108	0	0	4	4	24	2	9	7	8
1	1	99	2	1	4	5	24	1	5	7	9
1	2	92	1	8	4	6	24	0	0	7	10
1	3	86	1	2	4	7	23	1	8	7	11
1	4	81	0	0	4	8	23	0	5	8	0
1	5	76	0	8	4	9	22	2	2	8	1
1	6	72	0	0	4	10	22	1	0	8	2
1	7	68	0	8	4	11	21	2	10	8	3
1	8	64	2	5	5	0	21	1	9	8	4
1	9	61	2	2	5	1	21	0	9	8	5
1	10	58	2	9	5	2	20	2	8	8	6
1	11	56	1	0	5	3	20	1	9	8	7
2	0	54	0	0	5	4	20	0	8	8	8
2	1	51	2	6	5	5	19	2	8	8	9
2	2	49	2	6	5	6	19	1	11	8	10
2	3	48	0	0	5	7	19	1	0	8	11
2	4	46	0	10	5	8	19	0	2	9	0
2	5	44	2	1	5	9	18	2	3	9	1
2	6	43	0	7	5	10	18	1	6	9	2
2	7	41	2	5	5	11	18	0	9	9	3
2	8	40	1	6	6	0	18	0	0	9	4
2	9	39	0	10	6	1	17	2	3	9	5
2	10	38	0	4	6	2	17	1	6	9	6
2	11	37	0	1	6	3	17	0	10	9	7
3	0	36	0	0	6	4	17	0	2	9	8
3	1	35	0	1	6	5	16	2	6	9	9
3	2	34	0	4	6	6	16	1	10	9	10
3	3	33	0	8	6	7	16	1	2	9	11
3	4	32	1	1	6	8	16	0	7	10	0

THORNS.



TABLE showing the number of Thorns or Quicksets requisite to enclose any quantity of land.

The distance of the plants are marked at top, the length in the left hand column, the number of thorns are found where these meet.

EXAMPLE.

A hedge is to be made 90 yards long, and the thorns 3 inches distant.

yards 90 }
inches 3 } 1110 the number required.

Yards long.	1 inch.	2 inches.	3 inches.	4 inches.	5 inches.
1	37	19	13	10	8
2	74	37	24	19	15
3	111	56	37	28	22
4	148	74	49	37	30
5	185	93	62	47	37
6	222	111	74	56	45
7	259	130	87	65	52
8	296	148	99	74	60
9	333	167	111	84	67
10	370	185	124	93	74
20	740	370	247	185	148
30	1110	555	370	278	222
40	1480	740	493	370	296
50	1850	925	617	463	370
60	2220	1110	740	555	445
70	2590	1295	864	648	518
80	2960	1480	987	740	592
90	3330	1665	1110	833	666
100	3700	1850	1234	925	740
200	7400	3700	2467	1850	1480
300	11100	5550	3700	2775	2220
400	14800	7400	4933	3700	2960
500	18500	9250	6167	4625	3700
600	22200	11100	7400	5550	4440
700	25900	12950	8633	6475	5180
800	29600	14800	9867	7400	5920
900	33300	16650	11100	8325	6660
1000	37000	18500	12334	9250	7400
2000	74000	37000	24667	18500	14800
3000	111000	55500	37000	27750	22200
4000	148000	74000	49333	37000	29600
5000	185000	92500	61670	46250	37000
6000	222000	111000	74000	55500	44400
7000	259000	129500	86333	64750	51800
8000	296000	148000	98667	74000	59200
9000	333000	166500	111000	83250	66600
10000	370000	185000	123333	92500	74000

Yards long.	6 inches.	7 inches.	8 inches.	9 inches.	10 inches.
1	7	6	5	4	4
2	13	11	10	8	8
3	19	16	14	13	12
4	25	21	19	17	15
5	31	27	24	21	19
6	37	32	29	25	23
7	44	37	32	29	26
8	50	44	37	33	30
9	56	48	42	37	34
10	62	53	47	42	37
20	124	106	93	83	74
30	185	159	139	124	111
40	247	212	185	165	148
50	309	265	232	206	185
60	370	318	278	247	222
70	432	370	324	288	259
80	494	423	370	329	296
90	555	476	417	370	333
100	617	529	463	412	370
200	1234	1057	926	823	740
300	1850	1586	1388	1234	1110
400	2467	2115	1850	1645	1480
500	3085	2643	2313	2057	1850
600	3700	3172	2775	2467	2220
700	4317	3700	3238	2878	2590
800	4934	4229	3700	3289	2960
900	5550	4757	4163	3700	3330
1000	6167	5286	4625	4111	3700
2000	12334	10572	9250	8223	7400
3000	18500	15857	13875	12334	11100
4000	24667	21143	18500	16445	14800
5000	30834	26427	23125	20556	18500
6000	37000	31714	27750	24666	22200
7000	43167	37000	32375	28778	25900
8000	49334	42286	37000	32888	29600
9000	55500	47572	41625	37000	33300
10000	61667	52857	46250	41111	37000

MANURING.

THE figures at the top are the distance of the rows, those on the left the distance of the heaps; then under the top figure and opposite the proper figure on the left, are found the number of heaps required for an acre.

EXAMPLE.

The rows are 8 yards distant, and the heaps 6 yards distant, then under 8 on the top, and opposite 6 in the left hand column is 120, the number of heaps required for an acre. If this number 120 be divided by the number of heaps in a cart load, $\frac{120}{6} = 20$ cart loads required for an acre.

Supposing the rows to be 6 yards distant, and the heaps 2 yards, then opposite 2 on the left and under 6 on the top, are found 480 heaps for an acre; this number divided by 3, the number of heaps in a cart load, that is $\frac{480}{3} = 160$ cart loads for an acre.

Dist. of Heaps.	2	3	4	5	6	7
<i>yds.</i>						
1	2880	1920	1440	1152	960	823
1½	1920	1280	960	768	640	549
2	1440	960	720	576	480	412
2½	1152	768	576	461	384	329
3	960	640	480	384	320	275
3½	823	549	412	329	275	235
4	720	480	360	288	240	206
4½	640	428	320	256	214	183
5	576	384	288	231	192	165
5½	524	350	362	210	175	150
6	480	320	240	192	160	137
6½	443	296	222	177	148	127
7	412	275	206	165	137	118
7½	384	256	192	154	128	111
8	360	240	180	144	120	103
8½	339	226	169	136	113	98
9	320	214	160	128	107	92
9½	304	203	152	122	102	87
10	288	192	144	115	96	83
10½	275	183	137	110	92	79
11	262	175	131	105	88	75
11½	250	167	126	100	84	72
12	240	160	120	96	80	69

Dist. of Heaps.	8	9	10	11	12
<i>yds.</i>					
1	720	640	576	524	480
1½	480	428	384	350	320
2	360	320	288	262	240
2½	288	256	230	209	192
3	240	214	192	175	160
3½	206	183	165	150	138
4	180	160	144	131	120
4½	160	142	128	117	107
5	144	129	115	105	96
5½	131	117	105	96	88
6	120	107	96	88	80
6½	111	99	89	81	74
7	103	92	83	75	69
7½	96	86	77	70	64
8	90	80	72	66	60
8½	85	76	68	62	57
9	80	72	64	59	54
9½	76	68	61	56	51
10	72	64	58	53	48
10½	69	61	55	50	46
11	66	59	53	47	44
11½	63	56	51	45	42
12	60	54	48	44	40

TABLE
OF
SOLID MEASURE.

THE greatest length in the table is 42 feet, and the greatest girt is 80 inches, then under the proposed length at the top, and opposite to the girt in inches on the left, is found the solidity.

Girt.	Length, 1 foot.		Length, 2 feet.		Length, 3 feet.		Length, 4 feet.		Length, 5 feet.		Length, 6 feet.	
	in.	f.	in.	f.	in.	f.	in.	f.	in.	f.	in.	f.
24	0	3	0	6	0	9	1	0	1	3	1	6
26	0	3 $\frac{1}{2}$	0	7	0	10 $\frac{1}{2}$	1	2	1	5 $\frac{1}{2}$	1	9 $\frac{1}{4}$
28	0	4	0	8 $\frac{1}{4}$	1	0 $\frac{1}{4}$	1	4 $\frac{1}{4}$	1	8 $\frac{1}{2}$	2	0 $\frac{1}{2}$
30	0	4 $\frac{1}{2}$	0	9 $\frac{1}{2}$	1	2	1	6 $\frac{3}{4}$	1	11 $\frac{1}{2}$	2	4
32	0	5 $\frac{1}{4}$	0	10 $\frac{3}{4}$	1	4	1	9 $\frac{1}{4}$	2	3 $\frac{3}{4}$	2	8
34	0	6	1	0	1	6	2	0	2	6	3	0
36	0	6 $\frac{3}{4}$	1	1 $\frac{1}{2}$	1	8 $\frac{1}{4}$	2	3	2	9 $\frac{3}{4}$	3	4 $\frac{1}{2}$
38	0	7 $\frac{1}{2}$	1	3	1	10 $\frac{1}{2}$	2	6	3	1 $\frac{1}{2}$	3	9
40	0	8 $\frac{1}{4}$	1	4 $\frac{1}{4}$	2	1	2	9 $\frac{1}{4}$	3	5 $\frac{3}{4}$	4	2
42	0	9 $\frac{1}{4}$	1	6 $\frac{3}{4}$	2	3 $\frac{1}{4}$	3	0 $\frac{3}{4}$	3	9 $\frac{3}{4}$	4	7
44	0	10	1	8 $\frac{1}{4}$	2	6 $\frac{1}{4}$	3	4 $\frac{1}{4}$	4	2 $\frac{1}{2}$	5	0 $\frac{1}{2}$
46	0	11	1	10	2	9	3	8	4	7	5	6 $\frac{1}{4}$
48	1	0	2	0	3	0	4	0	5	0	6	0
50	1	1	2	2	3	3	4	4	5	5	6	6 $\frac{1}{4}$
52	1	2	2	4 $\frac{1}{4}$	3	6 $\frac{1}{4}$	4	8 $\frac{1}{4}$	5	10 $\frac{1}{4}$	7	0 $\frac{1}{2}$
54	1	3 $\frac{1}{4}$	2	6 $\frac{3}{4}$	3	9 $\frac{1}{2}$	5	0 $\frac{3}{4}$	6	3 $\frac{3}{4}$	7	7
56	1	4 $\frac{1}{4}$	2	8 $\frac{1}{2}$	4	1	5	5 $\frac{1}{4}$	6	9	8	2
58	1	5 $\frac{1}{2}$	2	11	4	4 $\frac{1}{2}$	5	10	7	3 $\frac{1}{2}$	8	9
60	1	6 $\frac{3}{4}$	3	1 $\frac{1}{2}$	4	8 $\frac{3}{4}$	6	3	7	9 $\frac{3}{4}$	9	4 $\frac{1}{2}$
62	1	8	3	4	5	0	6	8	8	4	10	0
64	1	9 $\frac{1}{4}$	3	6 $\frac{3}{4}$	5	4	7	1 $\frac{1}{4}$	8	10 $\frac{1}{2}$	10	8
66	1	10 $\frac{3}{4}$	3	9 $\frac{1}{4}$	5	8	7	6 $\frac{3}{4}$	9	5	11	4
68	2	0	4	0	6	0 $\frac{1}{4}$	8	0 $\frac{1}{4}$	10	0 $\frac{1}{2}$	12	0 $\frac{1}{2}$
70	2	1 $\frac{1}{2}$	4	3	6	4 $\frac{1}{2}$	8	6	10	7 $\frac{1}{2}$	12	9
72	2	3	4	6	6	9	9	0	11	3	13	6
74	2	4 $\frac{1}{2}$	4	9	7	1 $\frac{1}{2}$	9	6	11	10 $\frac{1}{2}$	14	3
76	2	6	5	0	7	6 $\frac{1}{4}$	10	0 $\frac{1}{4}$	12	6 $\frac{1}{2}$	15	0 $\frac{1}{2}$
78	2	7 $\frac{3}{4}$	5	3 $\frac{1}{4}$	7	11	10	6 $\frac{3}{4}$	13	2 $\frac{1}{2}$	15	10
80	2	9 $\frac{1}{4}$	5	6 $\frac{1}{4}$	8	4	11	1 $\frac{1}{4}$	13	10 $\frac{1}{2}$	16	8

Girt.	Length, 7 feet.		Length, 8 feet.		Length, 9 feet.		Length, 10 feet.		Length, 11 feet.		Length, 12 feet.	
	<i>f.</i>	<i>in.</i>	<i>f.</i>	<i>in.</i>	<i>f.</i>	<i>in.</i>	<i>f.</i>	<i>in.</i>	<i>f.</i>	<i>in.</i>	<i>f.</i>	<i>in.</i>
24	1	9	2	0	2	3	2	6	2	9	3	0
26	2	0 $\frac{1}{2}$	2	4	2	7 $\frac{1}{2}$	2	11 $\frac{1}{4}$	3	2 $\frac{3}{4}$	3	6 $\frac{1}{4}$
28	2	4 $\frac{1}{2}$	2	8 $\frac{3}{4}$	3	0 $\frac{3}{4}$	3	4 $\frac{3}{4}$	3	9	4	1
30	2	8 $\frac{1}{2}$	3	1 $\frac{1}{2}$	3	6 $\frac{1}{2}$	3	10 $\frac{1}{2}$	4	3 $\frac{1}{2}$	4	8 $\frac{1}{2}$
32	3	1 $\frac{1}{4}$	3	6 $\frac{1}{2}$	4	0	4	5 $\frac{1}{4}$	4	10 $\frac{1}{2}$	5	4
34	3	6	4	0	4	6 $\frac{1}{4}$	5	0	5	6 $\frac{1}{4}$	6	0 $\frac{1}{4}$
36	3	11 $\frac{1}{4}$	4	6	5	0 $\frac{3}{4}$	5	7 $\frac{1}{2}$	6	2 $\frac{1}{4}$	6	9
38	4	4 $\frac{1}{2}$	5	0	5	7 $\frac{1}{2}$	6	3	6	10 $\frac{3}{4}$	7	6 $\frac{1}{4}$
40	4	10 $\frac{1}{4}$	5	6 $\frac{1}{2}$	6	3	6	11 $\frac{1}{4}$	7	7 $\frac{1}{2}$	8	4
42	5	4 $\frac{1}{2}$	6	1	6	10 $\frac{3}{4}$	7	7 $\frac{3}{4}$	8	5	9	2 $\frac{1}{4}$
44	5	10 $\frac{1}{2}$	6	8 $\frac{1}{4}$	7	6 $\frac{3}{4}$	8	4 $\frac{3}{4}$	9	3	10	1
46	6	5	7	4	8	3 $\frac{1}{4}$	9	2 $\frac{1}{4}$	10	1 $\frac{1}{4}$	11	0 $\frac{1}{4}$
48	7	0	8	0	9	0	10	0	11	0	12	0
50	7	7	8	8 $\frac{1}{4}$	9	9	10	10 $\frac{1}{4}$	11	11 $\frac{1}{4}$	13	0 $\frac{1}{4}$
52	8	2 $\frac{1}{2}$	9	4 $\frac{3}{4}$	10	6 $\frac{3}{4}$	11	8 $\frac{3}{4}$	12	10 $\frac{3}{4}$	14	1
54	8	10 $\frac{1}{4}$	10	1	11	4 $\frac{3}{4}$	12	7 $\frac{3}{4}$	13	11	15	2 $\frac{1}{4}$
56	9	6 $\frac{1}{4}$	10	10 $\frac{1}{2}$	12	3	13	7 $\frac{1}{4}$	14	11 $\frac{3}{4}$	16	4
58	10	2 $\frac{1}{2}$	11	8 $\frac{1}{4}$	13	1 $\frac{3}{4}$	14	7	16	0 $\frac{3}{4}$	17	6 $\frac{1}{4}$
60	10	11 $\frac{1}{4}$	12	6	14	0 $\frac{3}{4}$	15	7 $\frac{1}{2}$	17	2 $\frac{1}{4}$	18	9
62	11	8	13	4	15	0	16	8 $\frac{1}{4}$	18	4 $\frac{1}{4}$	20	0 $\frac{1}{4}$
64	12	5 $\frac{1}{4}$	14	2 $\frac{3}{4}$	15	11 $\frac{3}{4}$	17	9	19	6 $\frac{1}{2}$	21	4
66	13	2 $\frac{3}{4}$	15	1 $\frac{1}{2}$	17	0	18	10 $\frac{1}{2}$	20	9 $\frac{1}{2}$	22	8 $\frac{1}{4}$
68	14	0 $\frac{1}{2}$	16	0 $\frac{1}{4}$	18	0 $\frac{5}{4}$	20	0 $\frac{3}{4}$	22	0 $\frac{1}{2}$	24	0 $\frac{3}{4}$
70	14	10 $\frac{1}{2}$	17	0	19	1 $\frac{1}{2}$	21	3	23	4 $\frac{3}{4}$	25	6 $\frac{1}{4}$
72	15	9	18	0	20	3	22	6	24	9	27	0
74	16	7 $\frac{1}{2}$	19	0	21	4 $\frac{3}{4}$	23	9	26	1 $\frac{3}{4}$	28	6 $\frac{1}{4}$
76	17	6 $\frac{1}{2}$	20	0 $\frac{3}{4}$	22	6 $\frac{3}{4}$	25	0 $\frac{3}{4}$	27	6 $\frac{3}{4}$	30	0 $\frac{3}{4}$
78	18	5	21	1 $\frac{1}{2}$	23	9	26	4 $\frac{3}{4}$	29	0 $\frac{1}{2}$	31	8 $\frac{1}{4}$
80	19	5 $\frac{1}{4}$	22	2 $\frac{1}{4}$	24	11 $\frac{3}{4}$	27	9 $\frac{1}{4}$	30	6 $\frac{1}{2}$	33	4

Girt.	Length, 13 feet.		Length, 14 feet.		Length, 15 feet.		Length, 16 feet.		Length, 17 feet.	
	<i>in.</i>	<i>f.</i>	<i>in.</i>	<i>f.</i>	<i>in.</i>	<i>f.</i>	<i>in.</i>	<i>f.</i>	<i>in.</i>	<i>f.</i>
24	3	3	3	6	3	9	4	0	4	3
26	3	9 $\frac{3}{4}$	4	1 $\frac{1}{4}$	4	4 $\frac{3}{4}$	4	8 $\frac{1}{4}$	4	11 $\frac{3}{4}$
28	4	5	4	9	5	1 $\frac{1}{4}$	5	5 $\frac{1}{4}$	5	9 $\frac{1}{4}$
30	5	0 $\frac{3}{4}$	5	5 $\frac{1}{2}$	5	10 $\frac{1}{4}$	6	3	6	7 $\frac{1}{2}$
32	5	9 $\frac{1}{4}$	6	2 $\frac{3}{4}$	6	8	7	1 $\frac{1}{4}$	7	6 $\frac{3}{4}$
34	6	6 $\frac{1}{4}$	7	0 $\frac{1}{4}$	7	6 $\frac{1}{4}$	8	0 $\frac{1}{4}$	8	6 $\frac{1}{4}$
36	7	3 $\frac{3}{4}$	7	10 $\frac{1}{2}$	8	5 $\frac{1}{4}$	9	0	9	6 $\frac{3}{4}$
38	8	1 $\frac{3}{4}$	8	9 $\frac{1}{4}$	9	4 $\frac{3}{4}$	10	0 $\frac{1}{4}$	10	7 $\frac{3}{4}$
40	9	0 $\frac{1}{4}$	9	8 $\frac{1}{2}$	10	5	11	1 $\frac{1}{4}$	11	9 $\frac{1}{2}$
42	9	11 $\frac{1}{4}$	10	8 $\frac{1}{2}$	11	5 $\frac{3}{4}$	12	3	13	0
44	10	11	11	9 $\frac{1}{4}$	12	7 $\frac{1}{4}$	13	5 $\frac{1}{4}$	14	8 $\frac{1}{2}$
46	11	11 $\frac{1}{4}$	12	10 $\frac{1}{4}$	13	9 $\frac{1}{4}$	14	8 $\frac{1}{4}$	15	7 $\frac{1}{4}$
48	13	0	14	0	15	0	16	0	17	0
50	14	1 $\frac{1}{4}$	15	2 $\frac{1}{4}$	16	3 $\frac{1}{4}$	17	4 $\frac{1}{4}$	18	5 $\frac{1}{4}$
52	15	3	16	5	17	7 $\frac{1}{2}$	18	9 $\frac{1}{2}$	19	11 $\frac{1}{2}$
54	16	5 $\frac{1}{4}$	17	8 $\frac{1}{2}$	18	11 $\frac{3}{4}$	20	3	21	6
56	17	8 $\frac{1}{4}$	19	0 $\frac{1}{2}$	20	5	21	9 $\frac{1}{4}$	23	1 $\frac{1}{2}$
58	18	11 $\frac{3}{4}$	20	5 $\frac{1}{4}$	21	10 $\frac{3}{4}$	23	4 $\frac{1}{4}$	24	9 $\frac{3}{4}$
60	20	3 $\frac{3}{4}$	21	10 $\frac{1}{2}$	23	5 $\frac{1}{4}$	25	0	26	6 $\frac{3}{4}$
62	21	8 $\frac{1}{4}$	23	4 $\frac{1}{4}$	25	0 $\frac{1}{4}$	26	8 $\frac{1}{4}$	28	4 $\frac{1}{4}$
64	23	1 $\frac{1}{4}$	24	10 $\frac{1}{2}$	26	8	28	5 $\frac{1}{4}$	30	2 $\frac{1}{2}$
66	24	6 $\frac{3}{4}$	26	5 $\frac{1}{2}$	28	4 $\frac{1}{4}$	30	3	32	1 $\frac{1}{2}$
68	26	1	28	1	30	1 $\frac{1}{4}$	32	1 $\frac{1}{4}$	34	1 $\frac{1}{4}$
70	27	7 $\frac{3}{4}$	29	9 $\frac{1}{4}$	31	10 $\frac{3}{4}$	34	0 $\frac{1}{4}$	36	1 $\frac{3}{4}$
72	29	3	31	6	33	9	36	0	38	3
74	30	10 $\frac{3}{4}$	33	3 $\frac{1}{4}$	35	7 $\frac{3}{4}$	38	0 $\frac{1}{4}$	40	4 $\frac{3}{4}$
76	32	7	35	1	37	7 $\frac{1}{4}$	40	1 $\frac{1}{4}$	42	7 $\frac{1}{4}$
78	34	4	36	11 $\frac{1}{2}$	39	7 $\frac{1}{4}$	42	3	44	10 $\frac{1}{2}$
80	36	1 $\frac{1}{4}$	38	10 $\frac{1}{2}$	41	8	44	5 $\frac{1}{4}$	47	2 $\frac{1}{2}$

Girt.	Length, 18 feet.		Length, 19 feet.		Length, 20 feet.		Length, 21 feet.		Length, 22 feet.	
	<i>in.</i>	<i>f.</i>	<i>in.</i>	<i>f.</i>	<i>in.</i>	<i>f.</i>	<i>in.</i>	<i>f.</i>	<i>in.</i>	<i>f.</i>
24	4	6	4	9	5	0	5	3	5	6
26	5	3 $\frac{1}{4}$	5	6 $\frac{3}{4}$	5	10 $\frac{1}{2}$	6	13 $\frac{3}{4}$	6	5 $\frac{1}{2}$
28	6	1 $\frac{1}{2}$	6	5 $\frac{1}{2}$	6	9 $\frac{1}{2}$	7	13 $\frac{1}{4}$	7	5 $\frac{3}{4}$
30	7	0 $\frac{1}{4}$	7	5	7	9 $\frac{3}{4}$	8	2 $\frac{1}{2}$	8	7
32	8	0	8	5 $\frac{1}{4}$	8	10 $\frac{1}{2}$	9	4	9	9 $\frac{1}{4}$
34	9	0 $\frac{1}{2}$	9	6 $\frac{1}{4}$	10	0 $\frac{1}{2}$	10	6 $\frac{1}{2}$	11	0 $\frac{1}{2}$
36	10	1 $\frac{1}{2}$	10	8 $\frac{1}{4}$	11	3	11	9 $\frac{3}{4}$	12	4 $\frac{1}{2}$
38	11	3 $\frac{1}{4}$	11	10 $\frac{3}{4}$	12	6 $\frac{1}{4}$	13	1 $\frac{3}{4}$	13	9 $\frac{1}{4}$
40	12	5 $\frac{3}{4}$	13	2 $\frac{1}{4}$	13	10 $\frac{1}{2}$	14	7	15	3 $\frac{1}{4}$
42	13	9 $\frac{1}{4}$	14	6 $\frac{1}{2}$	15	3 $\frac{3}{4}$	16	1	16	10
44	15	1 $\frac{1}{2}$	15	11 $\frac{1}{2}$	16	9 $\frac{1}{2}$	17	7 $\frac{3}{4}$	18	5 $\frac{3}{4}$
46	16	6 $\frac{1}{4}$	17	5 $\frac{1}{2}$	18	4 $\frac{1}{2}$	19	3 $\frac{1}{2}$	20	2 $\frac{1}{4}$
48	18	0	19	0	20	0	21	0	22	0
50	19	6 $\frac{1}{4}$	20	7 $\frac{1}{4}$	21	8 $\frac{1}{4}$	22	9 $\frac{1}{4}$	23	10 $\frac{1}{4}$
52	21	1 $\frac{1}{2}$	22	3 $\frac{1}{2}$	23	5 $\frac{1}{2}$	24	7 $\frac{1}{4}$	25	9 $\frac{1}{4}$
54	22	9 $\frac{1}{4}$	24	0 $\frac{1}{2}$	25	3 $\frac{3}{4}$	26	7	27	10
56	24	6	25	10 $\frac{1}{4}$	27	2 $\frac{1}{2}$	28	7	29	11 $\frac{1}{4}$
58	26	3 $\frac{1}{4}$	27	8 $\frac{3}{4}$	29	2 $\frac{1}{4}$	30	8	32	1 $\frac{1}{4}$
60	28	1 $\frac{1}{2}$	29	8 $\frac{1}{4}$	31	3	32	9 $\frac{3}{4}$	34	4 $\frac{1}{2}$
62	30	0 $\frac{1}{4}$	31	8 $\frac{1}{4}$	33	4 $\frac{1}{4}$	35	0 $\frac{1}{2}$	36	8 $\frac{1}{2}$
64	32	0	33	9 $\frac{1}{4}$	35	6 $\frac{3}{4}$	37	4	39	1 $\frac{1}{4}$
66	34	0 $\frac{1}{4}$	35	11	37	9 $\frac{3}{4}$	39	8 $\frac{1}{4}$	41	7
68	36	1 $\frac{1}{2}$	38	1 $\frac{1}{2}$	40	1 $\frac{3}{4}$	42	13 $\frac{3}{4}$	44	13 $\frac{3}{4}$
70	38	3 $\frac{1}{4}$	40	4 $\frac{1}{4}$	42	6 $\frac{1}{4}$	44	8	46	9 $\frac{1}{4}$
72	40	6	42	9	45	0	47	3	49	6
74	42	9 $\frac{1}{4}$	45	13 $\frac{1}{4}$	47	6 $\frac{1}{4}$	49	11	52	3 $\frac{1}{4}$
76	45	1 $\frac{1}{2}$	47	7 $\frac{1}{2}$	50	13 $\frac{3}{4}$	52	7 $\frac{3}{4}$	55	1 $\frac{1}{4}$
78	47	6 $\frac{1}{4}$	50	2	52	9 $\frac{3}{4}$	55	5 $\frac{1}{4}$	58	1
80	50	0	52	9 $\frac{1}{4}$	55	6 $\frac{3}{4}$	58	4	61	1 $\frac{1}{4}$

Girt.	Length, 23 feet.		Length, 24 feet.		Length, 25 feet.		Length, 26 feet.		Length, 27 feet.	
	<i>in.</i>	<i>f. in.</i>	<i>f. in.</i>	<i>f. in.</i>	<i>f. in.</i>	<i>f. in.</i>	<i>f. in.</i>	<i>f. in.</i>	<i>f. in.</i>	<i>f. in.</i>
24	5	9	6	0	6	3	6	6	6	9
26	6	8 $\frac{3}{4}$	7	0 $\frac{1}{2}$	7	4	7	7 $\frac{1}{2}$	7	11
28	7	9 $\frac{1}{4}$	8	2	8	6	8	10 $\frac{1}{4}$	9	2 $\frac{1}{4}$
30	8	11 $\frac{3}{4}$	9	4 $\frac{1}{2}$	9	9 $\frac{1}{4}$	10	1 $\frac{3}{4}$	10	6 $\frac{1}{2}$
32	10	2 $\frac{1}{2}$	10	8	11	1 $\frac{1}{4}$	11	6 $\frac{1}{2}$	12	0
34	11	6 $\frac{1}{4}$	12	0 $\frac{1}{2}$	12	6 $\frac{1}{2}$	13	0 $\frac{1}{2}$	13	6 $\frac{1}{2}$
36	12	11 $\frac{1}{4}$	13	6	14	0 $\frac{3}{4}$	14	7 $\frac{1}{2}$	15	2 $\frac{1}{4}$
38	14	4 $\frac{3}{4}$	15	0 $\frac{1}{2}$	15	8	16	3 $\frac{1}{2}$	16	11
40	15	11 $\frac{1}{2}$	16	8	17	4 $\frac{1}{4}$	18	0 $\frac{3}{4}$	18	9
42	17	7 $\frac{1}{4}$	18	4 $\frac{1}{2}$	19	1 $\frac{1}{4}$	19	10 $\frac{1}{4}$	20	8
44	19	4	20	2	21	0	21	10	22	8 $\frac{1}{4}$
46	21	1 $\frac{1}{4}$	22	0 $\frac{1}{2}$	22	11 $\frac{1}{2}$	23	10 $\frac{1}{2}$	24	9 $\frac{1}{2}$
48	23	0	24	0	25	0	26	0	27	0
50	24	11 $\frac{1}{4}$	26	0 $\frac{1}{2}$	27	1 $\frac{1}{2}$	28	2 $\frac{1}{2}$	29	3 $\frac{1}{2}$
52	27	0	28	2	29	4	30	6 $\frac{1}{4}$	31	8 $\frac{1}{4}$
54	29	1 $\frac{1}{4}$	30	4 $\frac{1}{2}$	31	7 $\frac{3}{4}$	32	10 $\frac{3}{4}$	34	2
56	31	3 $\frac{1}{2}$	32	8	34	0 $\frac{1}{4}$	35	4 $\frac{1}{4}$	36	9
58	33	7	35	0 $\frac{1}{2}$	36	6	37	11 $\frac{1}{2}$	39	5
60	35	11 $\frac{1}{4}$	37	6	39	0 $\frac{3}{4}$	40	7 $\frac{1}{2}$	42	2 $\frac{1}{4}$
62	38	4 $\frac{1}{2}$	40	0 $\frac{1}{2}$	41	8 $\frac{1}{2}$	43	4 $\frac{1}{2}$	45	0 $\frac{1}{2}$
64	40	10 $\frac{3}{4}$	42	8	44	5 $\frac{1}{4}$	46	2 $\frac{1}{4}$	48	0
66	43	5 $\frac{3}{4}$	45	4 $\frac{1}{2}$	47	3 $\frac{1}{4}$	49	1 $\frac{1}{4}$	51	0 $\frac{1}{2}$
68	46	2	48	2	50	2	52	2 $\frac{1}{4}$	54	2 $\frac{1}{4}$
70	48	11	51	0 $\frac{1}{2}$	53	2	55	3 $\frac{1}{2}$	57	5
72	51	9	54	0	56	3	58	6	60	9
74	54	8	57	0 $\frac{1}{2}$	59	5	61	9 $\frac{1}{2}$	64	2
76	57	8	60	2	62	8	65	2 $\frac{1}{4}$	67	8 $\frac{1}{4}$
78	60	8 $\frac{3}{4}$	63	4 $\frac{1}{2}$	66	0 $\frac{1}{4}$	68	7 $\frac{3}{4}$	71	3 $\frac{1}{2}$
80	63	10 $\frac{3}{4}$	66	8	69	5 $\frac{1}{4}$	72	2 $\frac{3}{4}$	75	0

Girt.	Length, 28 feet.		Length, 29 feet.		Length, 30 feet.		Length, 31 feet.		Length, 32 feet.	
	in.	f. in.	f. in.	f. in.	f. in.	f. in.	f. in.	f. in.	f. in.	
24	7	0	7	3	7	6	7	9	8	0
26	8	2 $\frac{1}{2}$	8	6	8	9 $\frac{1}{2}$	9	1	9	4 $\frac{3}{4}$
28	9	6 $\frac{1}{4}$	9	10 $\frac{1}{2}$	10	2 $\frac{1}{2}$	10	6 $\frac{1}{2}$	10	10 $\frac{3}{4}$
30	10	11 $\frac{1}{4}$	11	4	11	8 $\frac{1}{2}$	12	1 $\frac{1}{4}$	12	6
32	12	5 $\frac{1}{4}$	12	10 $\frac{3}{4}$	13	4	13	9 $\frac{1}{4}$	14	2 $\frac{3}{4}$
34	14	0 $\frac{1}{2}$	14	6 $\frac{1}{2}$	15	0 $\frac{1}{2}$	15	6 $\frac{1}{2}$	16	0 $\frac{3}{4}$
36	15	9	16	3 $\frac{3}{4}$	16	10 $\frac{1}{2}$	17	5 $\frac{1}{4}$	18	0
38	17	6 $\frac{1}{4}$	18	2	18	9 $\frac{1}{2}$	19	5	20	0 $\frac{5}{8}$
40	19	5 $\frac{1}{4}$	20	1 $\frac{3}{4}$	20	10	21	6 $\frac{1}{4}$	22	2 $\frac{1}{4}$
42	21	5 $\frac{1}{4}$	22	2 $\frac{1}{2}$	22	11 $\frac{1}{2}$	23	8 $\frac{3}{4}$	24	6
44	23	6 $\frac{1}{4}$	24	4 $\frac{1}{4}$	25	2 $\frac{1}{2}$	26	0 $\frac{1}{2}$	26	10 $\frac{3}{4}$
46	25	8 $\frac{1}{2}$	26	7 $\frac{1}{2}$	27	6 $\frac{1}{2}$	28	5 $\frac{1}{2}$	29	4 $\frac{1}{4}$
48	28	0	29	0	30	0	31	0	32	0
50	30	4 $\frac{1}{2}$	31	5 $\frac{1}{2}$	32	6 $\frac{1}{2}$	33	7 $\frac{1}{2}$	34	8 $\frac{3}{4}$
52	32	10 $\frac{1}{4}$	34	0 $\frac{1}{2}$	35	2 $\frac{1}{2}$	36	4 $\frac{1}{2}$	37	6 $\frac{3}{4}$
54	35	5 $\frac{1}{4}$	36	8 $\frac{1}{2}$	37	11 $\frac{1}{2}$	39	2 $\frac{3}{4}$	40	6
56	38	1 $\frac{1}{4}$	39	5 $\frac{1}{4}$	40	10	42	2 $\frac{1}{4}$	43	6 $\frac{3}{4}$
58	40	10 $\frac{1}{2}$	42	4	43	9 $\frac{1}{2}$	45	3	46	8 $\frac{3}{4}$
60	43	9	45	3 $\frac{3}{4}$	46	10 $\frac{1}{2}$	48	5 $\frac{1}{4}$	50	0
62	46	8 $\frac{1}{2}$	48	4 $\frac{1}{2}$	50	0 $\frac{1}{2}$	51	8 $\frac{1}{2}$	53	4 $\frac{5}{8}$
64	49	3 $\frac{1}{4}$	51	6 $\frac{3}{4}$	53	4	55	1 $\frac{1}{4}$	56	10 $\frac{3}{4}$
66	52	11 $\frac{1}{4}$	54	10	56	8 $\frac{1}{2}$	58	7 $\frac{1}{4}$	60	6
68	56	2 $\frac{1}{4}$	58	2 $\frac{1}{2}$	60	2 $\frac{1}{2}$	62	2 $\frac{1}{2}$	64	2 $\frac{3}{4}$
70	59	6 $\frac{1}{2}$	61	8	63	9 $\frac{1}{2}$	65	11	68	0 $\frac{3}{4}$
72	63	0	65	3	67	6	69	9	72	0
74	66	6 $\frac{1}{4}$	68	11	71	3 $\frac{1}{2}$	73	8	76	0 $\frac{5}{8}$
76	70	2 $\frac{1}{4}$	72	8 $\frac{1}{2}$	75	2 $\frac{1}{2}$	77	8 $\frac{1}{2}$	80	2 $\frac{3}{4}$
78	73	11 $\frac{1}{4}$	76	7	79	2 $\frac{1}{2}$	81	10 $\frac{1}{4}$	84	6
80	77	9 $\frac{1}{4}$	80	6 $\frac{3}{4}$	83	4	86	1 $\frac{1}{4}$	88	10 $\frac{3}{4}$

Girt.	Length, 33 feet.		Length, 34 feet.		Length, 35 feet.		Length, 36 feet.		Length, 37 feet.	
	in.	f. in.	f. in.	f. in.	f. in.	f. in.	f. in.	f. in.	f. in.	
24	8	3	8	6	8	9	9	0	9	3
26	9	8 $\frac{1}{4}$	9	11 $\frac{3}{4}$	10	3 $\frac{1}{4}$	10	6 $\frac{3}{4}$	10	10 $\frac{1}{4}$
28	11	2 $\frac{3}{4}$	11	6 $\frac{3}{4}$	11	11	12	3	12	7
30	12	10 $\frac{3}{4}$	13	3 $\frac{1}{4}$	13	8	14	0 $\frac{3}{4}$	14	5 $\frac{1}{4}$
32	14	8	15	1 $\frac{1}{4}$	15	6 $\frac{3}{4}$	16	0	16	5 $\frac{1}{4}$
34	16	6 $\frac{3}{4}$	17	0 $\frac{3}{4}$	17	6 $\frac{3}{4}$	18	0 $\frac{3}{4}$	18	6 $\frac{3}{4}$
36	18	6 $\frac{3}{4}$	19	1 $\frac{1}{4}$	19	8	20	3	20	9 $\frac{3}{4}$
38	20	8 $\frac{1}{4}$	21	3 $\frac{3}{4}$	21	11 $\frac{1}{4}$	22	6 $\frac{3}{4}$	23	2 $\frac{1}{4}$
40	22	11	23	7 $\frac{1}{4}$	24	3 $\frac{3}{4}$	25	0	25	8 $\frac{1}{4}$
42	25	3 $\frac{1}{4}$	26	0 $\frac{1}{4}$	26	9 $\frac{1}{2}$	27	6 $\frac{3}{4}$	28	4
44	27	8 $\frac{3}{4}$	28	6 $\frac{3}{4}$	29	5	30	3	31	1
46	30	3 $\frac{3}{4}$	31	2 $\frac{3}{4}$	32	1 $\frac{3}{4}$	33	0 $\frac{3}{4}$	33	11 $\frac{3}{4}$
48	33	0	34	0	35	0	36	0	37	0
50	35	9 $\frac{5}{4}$	36	10 $\frac{5}{4}$	37	11 $\frac{5}{4}$	39	0 $\frac{3}{4}$	40	1 $\frac{3}{4}$
52	38	8 $\frac{3}{4}$	39	10 $\frac{3}{4}$	41	1	42	3	43	5
54	41	9 $\frac{1}{4}$	43	0 $\frac{1}{4}$	44	3 $\frac{1}{4}$	45	6 $\frac{3}{4}$	46	10
56	44	11	46	3 $\frac{1}{4}$	47	7 $\frac{1}{4}$	49	0	50	4 $\frac{1}{4}$
58	48	2 $\frac{1}{4}$	49	7 $\frac{3}{4}$	51	1 $\frac{1}{4}$	52	6 $\frac{3}{4}$	54	0 $\frac{1}{4}$
60	51	6 $\frac{3}{4}$	53	1 $\frac{1}{4}$	54	8 $\frac{1}{4}$	56	3	57	9 $\frac{3}{4}$
62	55	0 $\frac{3}{4}$	56	8 $\frac{3}{4}$	58	4 $\frac{3}{4}$	60	0 $\frac{3}{4}$	61	8 $\frac{3}{4}$
64	58	8	60	5 $\frac{1}{4}$	62	2 $\frac{3}{4}$	64	0	65	9 $\frac{1}{4}$
66	62	4 $\frac{5}{4}$	64	3 $\frac{1}{4}$	66	2	68	0 $\frac{3}{4}$	69	11 $\frac{1}{2}$
68	66	2 $\frac{3}{4}$	68	2 $\frac{3}{4}$	70	3	72	3	74	3
70	70	2 $\frac{1}{4}$	72	3 $\frac{3}{4}$	74	5 $\frac{1}{4}$	76	6 $\frac{3}{4}$	78	8 $\frac{1}{4}$
72	74	3	76	6	78	9	81	0	83	3
74	78	5 $\frac{1}{4}$	80	9 $\frac{5}{4}$	83	2 $\frac{1}{4}$	85	6 $\frac{3}{4}$	87	11 $\frac{1}{4}$
76	82	8 $\frac{3}{4}$	85	2 $\frac{3}{4}$	87	9	90	3	92	9
78	87	1 $\frac{3}{4}$	89	9 $\frac{1}{4}$	92	5	95	0 $\frac{3}{4}$	97	8 $\frac{1}{2}$
80	91	8	94	5 $\frac{3}{4}$	97	2 $\frac{3}{4}$	100	0	102	9 $\frac{3}{4}$

Girt.		Length, 38 feet.		Length, 39 feet.		Length, 40 feet.		Length, 41 feet.		Length, 42 feet.	
in.	f.	in.	f.	in.	f.	in.	f.	in.	f.	in.	
24	9	6	9	9	10	0	10	3	10	6	
26	11	$1\frac{3}{4}$	11	$5\frac{1}{4}$	11	$8\frac{3}{4}$	12	$0\frac{1}{4}$	12	$3\frac{3}{4}$	
28	12	$11\frac{1}{4}$	13	$3\frac{1}{4}$	13	$7\frac{1}{4}$	13	$11\frac{1}{2}$	14	$3\frac{1}{2}$	
30	14	10	15	$2\frac{3}{4}$	15	$7\frac{1}{2}$	16	$0\frac{1}{4}$	16	$4\frac{1}{4}$	
32	16	$10\frac{3}{4}$	17	4	17	$9\frac{1}{4}$	18	$2\frac{3}{4}$	18	8	
34	19	$0\frac{3}{4}$	19	$6\frac{3}{4}$	20	$0\frac{3}{4}$	20	$6\frac{3}{4}$	21	$0\frac{3}{4}$	
36	21	$4\frac{1}{2}$	21	$11\frac{1}{4}$	22	6	23	$0\frac{3}{4}$	23	$7\frac{1}{4}$	
38	23	$9\frac{3}{4}$	24	$5\frac{1}{4}$	25	$0\frac{3}{4}$	25	$8\frac{1}{4}$	26	$3\frac{3}{4}$	
40	26	$4\frac{3}{4}$	27	1	27	$9\frac{1}{4}$	28	$5\frac{3}{4}$	29	2	
42	29	1	29	$10\frac{1}{4}$	30	$7\frac{1}{2}$	31	$4\frac{3}{4}$	32	$1\frac{3}{4}$	
44	31	$11\frac{1}{4}$	32	$9\frac{1}{4}$	33	$7\frac{1}{4}$	34	$5\frac{1}{2}$	35	$3\frac{1}{2}$	
46	34	$10\frac{3}{4}$	35	$9\frac{3}{4}$	36	$8\frac{3}{4}$	37	$7\frac{3}{4}$	38	$6\frac{3}{4}$	
48	38	0	39	0	40	0	41	0	42	0	
50	41	$2\frac{3}{4}$	42	$3\frac{3}{4}$	43	$4\frac{3}{4}$	44	$5\frac{3}{4}$	45	$6\frac{3}{4}$	
52	44	$7\frac{1}{4}$	45	$9\frac{1}{4}$	46	$11\frac{1}{4}$	48	$1\frac{1}{2}$	49	$3\frac{1}{2}$	
54	48	1	49	$4\frac{1}{2}$	50	$7\frac{1}{2}$	51	$10\frac{1}{2}$	53	$1\frac{1}{2}$	
56	51	$8\frac{3}{4}$	53	1	54	$5\frac{1}{4}$	55	$0\frac{3}{4}$	57	2	
58	55	$5\frac{3}{4}$	56	$11\frac{1}{4}$	58	$4\frac{3}{4}$	59	$10\frac{1}{4}$	61	$3\frac{3}{4}$	
60	59	$4\frac{1}{2}$	60	$11\frac{1}{4}$	62	6	64	$0\frac{3}{4}$	65	$7\frac{1}{4}$	
62	63	$4\frac{1}{4}$	65	$0\frac{3}{4}$	66	$8\frac{3}{4}$	68	$4\frac{3}{4}$	70	$0\frac{3}{4}$	
64	67	$6\frac{3}{4}$	69	4	71	$1\frac{1}{4}$	72	$10\frac{3}{4}$	74	8	
66	71	10	73	$8\frac{3}{4}$	75	$7\frac{1}{2}$	77	$6\frac{1}{4}$	79	$4\frac{3}{4}$	
68	70	3	78	$3\frac{1}{4}$	80	$3\frac{1}{4}$	82	$3\frac{1}{2}$	84	$3\frac{1}{2}$	
70	80	$9\frac{3}{4}$	82	$11\frac{1}{4}$	85	$0\frac{3}{4}$	87	$2\frac{1}{4}$	89	$3\frac{3}{4}$	
72	85	6	87	9	90	0	92	3	94	6	
74	90	$3\frac{3}{4}$	92	$8\frac{1}{4}$	95	$0\frac{3}{4}$	97	$5\frac{1}{4}$	99	$9\frac{3}{4}$	
76	95	$3\frac{1}{4}$	97	$9\frac{1}{4}$	100	$3\frac{1}{4}$	102	$9\frac{1}{4}$	105	$3\frac{1}{2}$	
78	100	4	102	$11\frac{3}{4}$	105	$7\frac{1}{2}$	108	$3\frac{1}{4}$	110	$10\frac{1}{4}$	
80	105	$6\frac{3}{4}$	108	4	111	$1\frac{1}{4}$	113	$10\frac{3}{4}$	116	8	

TABLE

FOR CONVERTING SCOTCH ACRES INTO IMPERIAL ACRES,
WITH THE PRICE PER IMPERIAL ACRE.

Scotch Acres.	Imperial.				Price, per Scotch acre.	Price, per Imperial acre.		
	Acres.	Roods.	Poles.	Yds.		£	s.	d.
1	1	1	1	24	1	0	15 10 $\frac{1}{4}$	
2	2	2	3	18	2	1	11 8 $\frac{1}{2}$	
3	3	3	5	11	3	2	7 6 $\frac{3}{4}$	
4	5	0	7	5	4	3	3 5	
5	6	1	8	29	5	3	19 3 $\frac{1}{4}$	
6	7	2	10	21	6	4	15 1 $\frac{3}{4}$	
7	8	3	12	16	7	5	11 0	
8	10	0	14	10	8	6	6 10 $\frac{1}{4}$	
9	11	1	16	3	9	7	2 8 $\frac{1}{4}$	
10	12	2	17	27	10	7	18 7	
20	25	0	35	24	11	8	14 5 $\frac{1}{2}$	
30	37	3	13	21	12	9	10 3 $\frac{1}{4}$	
40	50	1	31	17	13	10	6 1 $\frac{3}{4}$	
50	63	0	9	14	14	11	2 0	
60	75	2	27	11	15	11	17 10 $\frac{1}{2}$	
70	88	1	5	8	16	12	13 8 $\frac{3}{4}$	
80	100	3	23	4	17	13	9 7	
90	113	2	1	1	18	14	5 5 $\frac{1}{4}$	
100	126	0	18	28	19	15	1 3 $\frac{1}{2}$	
200	252	0	37	26	20	15	17 2	
300	378	1	16	24	21	16	13 0 $\frac{1}{4}$	
400	504	1	35	22	22	17	8 10 $\frac{1}{4}$	
500	630	2	14	20	23	18	4 8 $\frac{3}{4}$	
600	756	2	33	18	24	19	0 7	
700	882	3	12	16	25	19	16 5 $\frac{1}{4}$	
800	1008	3	31	15	26	20	12 3 $\frac{3}{4}$	
900	1135	0	10	13	27	21	8 2	

TABLE

FOR CONVERTING SCOTTISH MONEY INTO STERLING.

SCOTS.			STERLING.		
			£	s.	d. 12ths.
2 Pennies	equal to	1 bodle,	= 0	0	0 2
2 Bodles	„	1 plack,	= 0	0	0 4
3 Placks	„	1 shilling,	= 0	0	1 0
20 Shillings	„	1 pound,	= 0	1	8 0
13 Shillings	4 pennies,	1 merk,	= 0	1	1 4
10 Merks,	-	-	= 0	11	11 ¹ / ₂
20 Ditto,	-	-	= 1	2	2 ² / ₃
30 Ditto,	-	-	= 1	13	4 ¹ / ₂
40 Ditto,	-	-	= 2	4	5 ¹ / ₂
50 Ditto,	-	-	= 2	15	6 ² / ₃
100 Ditto,	-	-	= 5	11	1 ¹ / ₂
1 Pound,	-	-	= 0	1	8
2 Ditto,	-	-	= 0	3	4
3 Ditto,	-	-	= 0	5	0
4 Ditto,	-	-	= 0	6	8
5 Ditto,	-	-	= 0	8	4
6 Ditto,	-	-	= 0	10	0
7 Ditto,	-	-	= 0	11	8
8 Ditto,	-	-	= 0	13	4
9 Ditto,	-	-	= 0	15	0
10 Ditto,	-	-	= 0	16	8
20 Ditto,	-	-	= 1	13	4
30 Ditto,	-	-	= 2	10	0
40 Ditto,	-	-	= 3	6	8
50 Ditto,	-	-	= 4	3	4
60 Ditto,	-	-	= 5	0	0
70 Ditto,	-	-	= 5	16	8
80 Ditto,	-	-	= 6	13	8
90 Ditto,	-	-	= 7	10	0
100 Ditto,	-	-	= 8	6	8
200 Ditto,	-	-	= 16	13	4
300 Ditto,	-	-	= 25	0	0
400 Ditto,	-	-	= 33	6	8
500 Ditto,	-	-	= 41	13	4
1000 Ditto,	-	-	= 83	6	8

TABLE OF WAGES,

From Two Shillings and Sixpence a-week, to Thirty Shillings, shewing the amount from One Day up to Six Days, at the rate of TEN Hours a-day. Farthings allowed in favour of the Workmen.

2s. 6d.					3s.					3s. 6d.					4s.				
D.	H.	£	s.	d.	D.	H.	£	s.	d.	D.	H.	£	s.	d.	D.	H.	£	s.	d.
0	1	0	0	0 $\frac{1}{2}$	0	1	0	0	0 $\frac{1}{2}$	0	1	0	0	1	0	1	0	0	1
0	2	0	0	1	0	2	0	0	1 $\frac{1}{2}$	0	2	0	0	1 $\frac{1}{2}$	0	2	0	0	1
0	3	0	0	1 $\frac{1}{2}$	0	3	0	0	2	0	3	0	0	2	0	3	0	0	2
0	4	0	0	2	0	4	0	0	2 $\frac{1}{2}$	0	4	0	0	3	0	4	0	0	3
0	5	0	0	2 $\frac{1}{2}$	0	5	0	0	3	0	5	0	0	3 $\frac{1}{2}$	0	5	0	0	4
0	6	0	0	3	0	6	0	0	3 $\frac{1}{2}$	0	6	0	0	4 $\frac{1}{2}$	0	6	0	0	5
0	7	0	0	3 $\frac{1}{2}$	0	7	0	0	4	0	7	0	0	5	0	7	0	0	5
0	8	0	0	4	0	8	0	0	5	0	8	0	0	5 $\frac{1}{2}$	0	8	0	0	6
0	9	0	0	4 $\frac{1}{2}$	0	9	0	0	5 $\frac{1}{2}$	0	9	0	0	6	0	9	0	0	7
1	0	0	0	5	1	0	0	0	6	1	0	0	0	7	1	0	0	0	8
2	0	0	0	10	2	0	0	1	0	2	0	0	1	2	2	0	0	1	4
3	0	0	1	3	3	0	0	1	6	3	0	0	1	9	3	0	0	2	0
4	0	0	1	8	4	0	0	2	0	4	0	0	2	4	4	0	0	2	8
5	0	0	2	1	5	0	0	2	6	5	0	0	2	11	5	0	0	3	4
6	0	0	2	6	6	0	0	3	0	6	0	0	3	6	6	0	0	4	0

4s. 6d.					5s.					5s. 6d.					6s.				
D.	H.	£	s.	d.	D.	H.	£	s.	d.	D.	H.	£	s.	d.	D.	H.	£	s.	d.
0	1	0	0	1	0	1	0	0	1	0	1	0	0	1	0	1	0	0	1
0	2	0	0	2	0	2	0	0	2	0	2	0	0	2 $\frac{1}{2}$	0	2	0	0	2
0	3	0	0	3	0	3	0	0	3	0	3	0	0	3 $\frac{1}{2}$	0	3	0	0	3
0	4	0	0	3 $\frac{1}{2}$	0	4	0	0	4	0	4	0	0	4 $\frac{1}{2}$	0	4	0	0	5
0	5	0	0	4	0	5	0	0	5	0	5	0	0	5 $\frac{1}{2}$	0	5	0	0	6
0	6	0	0	5	0	6	0	0	6	0	6	0	0	6 $\frac{1}{2}$	0	6	0	0	7
0	7	0	0	6	0	7	0	0	7	0	7	0	0	8	0	7	0	0	8
0	8	0	0	7	0	8	0	0	8	0	8	0	0	9	0	8	0	0	9
0	9	0	0	8	0	9	0	0	9	0	9	0	0	10	0	9	0	0	11
1	0	0	0	9	1	0	0	0	10	1	0	0	0	11	1	0	0	1	0
2	0	0	1	6	2	0	0	1	8	2	0	0	1	10	2	0	0	2	0
3	0	0	2	3	3	0	0	2	6	3	0	0	2	9	3	0	0	3	0
4	0	0	3	0	4	0	0	3	4	4	0	0	3	8	4	0	0	4	0
5	0	0	3	9	5	0	0	4	2	5	0	0	4	7	5	0	0	5	0
6	0	0	4	6	6	0	0	5	0	6	0	0	5	6	6	0	0	6	0

6s. 6d.					7s.					7s. 6d.					8s.				
D.	H.	£	s.	d.	D.	H.	£	s.	d.	D.	H.	£	s.	d.	D.	H.	£	s.	d.
0	1	0	0	1 $\frac{1}{2}$	0	1	0	0	1 $\frac{1}{2}$	0	1	0	0	1 $\frac{1}{2}$	0	1	0	0	1 $\frac{1}{2}$
0	2	0	0	2 $\frac{1}{2}$	0	2	0	0	3	0	2	0	0	3	0	2	0	0	3 $\frac{1}{2}$
0	3	0	0	4	0	3	0	0	4 $\frac{1}{2}$	0	3	0	0	4 $\frac{1}{2}$	0	3	0	0	5
0	4	0	0	5 $\frac{1}{2}$	0	4	0	0	5 $\frac{1}{2}$	0	4	0	0	6	0	4	0	0	6 $\frac{1}{2}$
0	5	0	0	6 $\frac{1}{2}$	0	5	0	0	7	0	5	0	0	7 $\frac{1}{2}$	0	5	0	0	8
0	6	0	0	8	0	6	0	0	8 $\frac{1}{2}$	0	6	0	0	9	0	6	0	0	9 $\frac{1}{2}$
0	7	0	0	9	0	7	0	0	10	0	7	0	0	10 $\frac{1}{2}$	0	7	0	0	11 $\frac{1}{2}$
0	8	0	0	10 $\frac{1}{2}$	0	8	0	0	11 $\frac{1}{2}$	0	8	0	1	0	0	8	0	1	1
0	9	0	1	0	0	9	0	1	0 $\frac{1}{2}$	0	9	0	1	1 $\frac{1}{2}$	0	9	0	1	2 $\frac{1}{2}$
1	0	0	1	1	1	0	0	1	2	1	0	0	1	3	1	0	0	1	4
2	0	0	2	2	2	0	0	2	4	2	0	0	2	6	2	0	0	2	8
3	0	0	3	3	3	0	0	3	6	3	0	0	3	9	3	0	0	4	0
4	0	0	4	4	4	0	0	4	8	4	0	0	5	0	4	0	0	5	4
5	0	0	5	5	5	0	0	5	10	5	0	0	6	3	5	0	0	6	8
6	0	0	6	6	6	0	0	7	0	6	0	0	7	6	6	0	0	8	0
8s. 6d.					9s.					9s. 6d.					10s.				
D.	H.	£	s.	d.	D.	H.	£	s.	d.	D.	H.	£	s.	d.	D.	H.	£	s.	d.
0	1	0	0	2	0	1	0	0	2	0	1	0	0	2	0	1	0	0	2
0	2	0	0	3 $\frac{1}{2}$	0	2	0	0	3 $\frac{1}{2}$	0	2	0	0	4	0	2	0	0	4
0	3	0	0	5	0	3	0	0	5 $\frac{1}{2}$	0	3	0	0	6	0	3	0	0	6
0	4	0	0	7	0	4	0	0	7	0	4	0	0	7 $\frac{1}{2}$	0	4	0	0	8
0	5	0	0	8 $\frac{1}{2}$	0	5	0	0	9	0	5	0	0	9 $\frac{1}{2}$	0	5	0	0	10
0	6	0	0	10 $\frac{1}{2}$	0	6	0	0	11	0	6	0	0	11 $\frac{1}{2}$	0	6	0	1	0
0	7	0	1	0	0	7	0	1	0 $\frac{1}{2}$	0	7	0	1	1 $\frac{1}{2}$	0	7	0	1	2
0	8	0	1	1 $\frac{1}{2}$	0	8	0	1	2 $\frac{1}{2}$	0	8	0	1	3 $\frac{1}{2}$	0	8	0	1	4
0	9	0	1	3 $\frac{1}{2}$	0	9	0	1	4 $\frac{1}{2}$	0	9	0	1	5	0	9	0	1	6
1	0	0	1	5	1	0	0	1	6	1	0	0	1	7	1	0	0	1	8
2	0	0	2	10	2	0	0	3	0	2	0	0	3	2	2	0	0	3	4
3	0	0	4	3	3	0	0	4	6	3	0	0	4	9	3	0	0	5	0
4	0	0	5	8	4	0	0	6	0	4	0	0	6	4	4	0	0	6	8
5	0	0	7	1	5	0	0	7	6	5	0	0	7	11	5	0	0	8	4
6	0	0	8	6	6	0	0	9	0	6	0	0	9	6	6	0	0	10	0
11s.					12s.					13s.					14s.				
D.	H.	£	s.	d.	D.	H.	£	s.	d.	D.	H.	£	s.	d.	D.	H.	£	s.	d.
0	1	0	0	2 $\frac{1}{2}$	0	1	0	0	2 $\frac{1}{2}$	0	1	0	0	2 $\frac{1}{2}$	0	1	0	0	3
0	2	0	0	4 $\frac{1}{2}$	0	2	0	0	5	0	2	0	0	5 $\frac{1}{2}$	0	2	0	0	5 $\frac{1}{2}$
0	3	0	0	6 $\frac{1}{2}$	0	3	0	0	7 $\frac{1}{2}$	0	3	0	0	8	0	3	0	0	8 $\frac{1}{2}$
0	4	0	0	9	0	4	0	0	9 $\frac{1}{2}$	0	4	0	0	10	0	4	0	0	11 $\frac{1}{2}$
0	5	0	0	11	0	5	0	1	0	0	5	0	1	1 $\frac{1}{2}$	0	5	0	1	2 $\frac{1}{2}$
0	6	0	1	1 $\frac{1}{2}$	0	6	0	1	2 $\frac{1}{2}$	0	6	0	1	3	0	6	0	1	5 $\frac{1}{2}$
0	7	0	1	3 $\frac{1}{2}$	0	7	0	1	5	0	7	0	1	6	0	7	0	1	7
0	8	0	1	5 $\frac{1}{2}$	0	8	0	1	7 $\frac{1}{2}$	0	8	0	1	9	0	8	0	1	10

11s.					12s.					13s.					14s.				
D.	H.	£	s.	d.	D.	H.	£	s.	d.	D.	H.	£	s.	d.	D.	H.	£	s.	d.
0	9	0	1	8	0	9	0	1	9 $\frac{1}{2}$	0	9	0	1	11 $\frac{1}{2}$	0	9	0	2	1 $\frac{1}{2}$
1	0	0	1	10	1	0	0	2	0	1	0	0	2	2	1	0	0	2	4
2	0	0	3	8	2	0	0	4	0	2	0	0	4	4	2	0	0	4	8
3	0	0	5	6	3	0	0	6	0	3	0	0	6	6	3	0	0	7	0
4	0	0	7	4	4	0	0	8	0	4	0	0	8	8	4	0	0	9	4
5	0	0	9	2	5	0	0	10	0	5	0	0	10	10	5	0	0	11	8
6	0	0	11	0	6	0	0	12	0	6	0	0	13	0	6	0	0	14	0
15s.					16s.					17s.					18s.				
D.	H.	£	s.	d.	D.	H.	£	s.	d.	D.	H.	£	s.	d.	D.	H.	£	s.	d.
0	1	0	0	3	0	1	0	0	3 $\frac{1}{2}$	0	1	0	0	3 $\frac{1}{2}$	0	1	0	0	3 $\frac{1}{2}$
0	2	0	0	6	0	2	0	0	6 $\frac{1}{2}$	0	2	0	0	7	0	2	0	0	7 $\frac{1}{2}$
0	3	0	0	9	0	3	0	0	9 $\frac{1}{2}$	0	3	0	0	10 $\frac{1}{2}$	0	3	0	0	11
0	4	0	1	0	0	4	0	1	1	0	4	0	1	1 $\frac{1}{2}$	0	4	0	1	3
0	5	0	1	3	0	5	0	1	4	0	5	0	1	5	0	5	0	1	6
0	6	0	1	6	0	6	0	1	7 $\frac{1}{2}$	0	5	0	1	8 $\frac{1}{2}$	0	6	0	1	9 $\frac{1}{2}$
0	7	0	1	9	0	7	0	1	10 $\frac{1}{2}$	0	7	0	2	0	0	7	0	2	1 $\frac{1}{2}$
0	8	0	2	0	0	8	0	2	1 $\frac{1}{2}$	0	8	0	2	3 $\frac{1}{2}$	0	8	0	2	5
0	9	0	2	3	0	9	0	2	5	0	9	0	2	6 $\frac{1}{2}$	0	9	0	2	8 $\frac{1}{2}$
1	0	0	2	6	1	0	0	2	8	1	0	0	2	10	1	0	0	3	0
2	0	0	5	0	2	0	0	5	4	2	0	0	5	8	2	0	0	6	0
3	0	0	7	6	3	0	0	8	0	3	0	0	8	6	3	0	0	9	0
4	0	0	10	0	4	0	0	10	8	4	0	0	11	4	4	0	0	12	0
5	0	0	12	6	5	0	0	13	4	5	0	0	14	2	5	0	0	15	0
6	0	0	15	0	6	0	0	16	0	6	0	0	17	0	6	0	0	18	0
19s.					20s.					21s.					22s.				
D.	H.	£	s.	d.	D.	H.	£	s.	d.	D.	H.	£	s.	d.	D.	H.	£	s.	d.
0	1	0	0	4	0	1	0	0	4	0	1	0	0	4 $\frac{1}{2}$	0	1	0	0	4 $\frac{1}{2}$
0	2	0	0	7 $\frac{1}{2}$	0	2	0	0	8	0	2	0	0	8 $\frac{1}{2}$	0	2	0	0	9
0	3	0	0	11 $\frac{1}{2}$	0	3	0	1	0	0	3	0	1	0 $\frac{1}{2}$	0	3	0	1	1 $\frac{1}{2}$
0	4	0	1	3 $\frac{1}{2}$	0	4	0	1	4	0	4	0	1	5	0	4	0	1	5 $\frac{1}{2}$
0	5	0	1	7	0	5	0	1	8	0	5	0	1	9	0	5	0	1	10
0	6	0	1	11	0	6	0	2	0	0	6	0	2	11 $\frac{1}{2}$	0	6	0	2	2 $\frac{1}{2}$
0	7	0	2	2 $\frac{1}{2}$	0	7	0	2	4	0	7	0	2	5 $\frac{1}{2}$	0	7	0	2	7
0	8	0	2	6 $\frac{1}{2}$	0	8	0	2	8	0	8	0	2	9 $\frac{1}{2}$	0	8	0	2	11 $\frac{1}{2}$
0	9	0	2	10 $\frac{1}{2}$	0	9	0	3	0	0	9	0	3	2	0	9	0	3	3 $\frac{1}{2}$
1	0	0	3	2	1	0	0	3	4	1	0	0	3	6	1	0	0	3	8
2	0	0	6	4	2	0	0	6	8	2	0	0	7	0	2	0	0	7	4
3	0	0	9	6	3	0	0	10	0	3	0	0	10	6	3	0	0	11	0
4	0	0	12	8	4	0	0	13	4	4	0	0	14	0	4	0	0	14	8
5	0	0	15	10	5	0	0	16	8	5	0	0	17	6	5	0	0	18	4
6	0	0	19	0	6	0	1	0	0	6	0	1	1	0	6	0	1	2	0

23s.					24s.					25s.					26s.				
D.	H.	£	s.	d.	D.	H.	£	s.	d.	D.	H.	£	s.	d.	D.	H.	£	s.	d.
0	1	0	0	4 $\frac{1}{2}$	0	1	0	0	5	0	1	0	0	5	0	1	0	0	5 $\frac{1}{2}$
0	2	0	0	9 $\frac{1}{2}$	0	2	0	0	9 $\frac{1}{2}$	0	2	0	0	10	0	2	0	0	10 $\frac{1}{2}$
0	3	0	1	2	0	3	0	1	2 $\frac{1}{2}$	0	3	0	1	3	0	3	0	1	3 $\frac{1}{2}$
0	4	0	1	6 $\frac{1}{2}$	0	4	0	1	7 $\frac{1}{2}$	0	4	0	1	8	0	4	0	1	9
0	5	0	1	11	0	5	0	2	0	0	5	0	2	1	0	5	0	2	2
0	6	0	2	3 $\frac{1}{2}$	0	6	0	2	5	0	6	0	2	6	0	6	0	2	7 $\frac{1}{2}$
0	7	0	2	8 $\frac{1}{2}$	0	7	0	2	9 $\frac{1}{2}$	0	7	0	2	11	0	7	0	3	0
0	8	0	3	1	0	8	0	3	2 $\frac{1}{2}$	0	8	0	3	4	0	8	0	3	5 $\frac{1}{2}$
0	9	0	3	5 $\frac{1}{2}$	0	9	0	3	7 $\frac{1}{2}$	0	9	0	3	9	0	9	0	3	11
1	0	0	3	10	1	0	0	4	0	1	0	0	4	2	1	0	0	4	4
2	0	0	7	8	2	0	0	8	0	2	0	0	8	4	2	0	0	8	8
3	0	0	11	6	3	0	0	12	0	3	0	0	12	6	3	0	0	13	0
4	0	0	15	4	4	0	0	16	0	4	0	0	16	8	4	0	0	17	4
5	0	0	19	2	5	0	1	0	0	5	0	1	0	10	5	0	1	1	8
6	0	1	3	0	6	0	1	4	0	6	0	1	5	0	6	0	1	6	0

27s.					28s.					29s.					30s.				
D.	H.	£	s.	d.	D.	H.	£	s.	d.	D.	H.	£	s.	d.	D.	H.	£	s.	d.
0	1	0	0	5 $\frac{1}{2}$	0	1	0	0	5 $\frac{1}{2}$	0	1	0	0	6	0	1	0	0	6
0	2	0	0	11	0	2	0	1	0	0	2	0	0	11 $\frac{1}{2}$	0	2	0	1	0
0	3	0	1	4 $\frac{1}{2}$	0	3	0	1	5	0	3	0	1	5 $\frac{1}{2}$	0	3	0	1	6
0	4	0	1	9 $\frac{1}{2}$	0	4	0	1	10 $\frac{1}{2}$	0	4	0	1	11 $\frac{1}{2}$	0	4	0	2	0
0	5	0	2	3	0	5	0	2	4	0	5	0	2	5	0	5	0	2	6
0	6	0	2	8 $\frac{1}{2}$	0	6	0	2	9 $\frac{1}{2}$	0	6	0	2	11	0	6	0	3	0
0	7	0	3	2	0	7	0	3	3 $\frac{1}{2}$	0	7	0	3	4 $\frac{1}{2}$	0	7	0	3	6
0	8	0	3	7 $\frac{1}{2}$	0	8	0	3	9	0	8	0	3	10 $\frac{1}{2}$	0	8	0	4	0
0	9	0	4	0 $\frac{1}{2}$	0	9	0	4	2 $\frac{1}{2}$	0	9	0	4	4 $\frac{1}{2}$	0	9	0	4	6
1	0	0	4	6	1	0	0	4	8	1	0	0	4	10	1	0	0	5	0
2	0	0	9	0	2	0	0	9	4	2	0	0	9	8	2	0	0	10	0
3	0	0	13	6	3	0	0	14	0	3	0	0	14	6	3	0	0	15	0
4	0	0	18	0	4	0	0	18	8	4	0	0	19	4	4	0	1	0	0
5	0	1	2	6	5	0	1	3	4	5	0	1	4	2	5	0	1	5	0
6	0	1	7	0	6	0	1	8	0	6	0	1	9	0	6	0	1	10	0

