





Saddle, Cir Mhor, and Castles.

From Corrie to Goatfell  
and back August 1892

Brodick to Goatfell, down by  
Saddle to Glen Sannox, Corrie  
and home.

July 1895

W.M.  
H.M.



Ridge Walk, August  
1896; Proodich to  
Lannoy and (N.M.  
home (9-10) { S. J.  
                  { A. B.



Ben Nevis. 1898

Ridge Walk, August  
1898; Proodich (8) to  
Lannoy then via  
Cloch na h'Orige to  
Goatfell (8 AM) then  
to Kings Cross. (11-30 AM)



Cir Mbar. 1898

→ { J. J.  
      { W. M.  
      { S. J.  
      { N. M.



Goatfell and Cir Mbar  
from Castles, 1898.



Cloch na h'Orige, 1898.





From Brodick.  
 ← Descended across  
 to Glen Rosa  
 S.M. } 1898  
 S.M. }  
 S.M. }

From Brodick.  
 Descended to  
 Saddle & Glen Rosa.  
 S.J. } 1899.  
 J.C. }  
 S.M. }

Cycled from Machrie Bay  
 to Brodick; then up  
 and down.

Prof. B. } 1900  
 M. K. }  
 S. J. }  
 J. M. }  
 H. M. }

Saatchell. 1898.

From Glasgow to  
 Brodick & back by  
 Corrie  
 S.J. } 1901  
 J.A. }  
 H.M. }

Cir mhòr  
 ↓

Castles  
 ↓



← Cairn na Caillach

From Saatchell. 1898.





Cir Mhor.

"  
from the Castles.

August 1898.

- Mull -

July 1900

Left Salen at 6 am. for Ben  
more. No map or compass,  
mist down to sea level. Got  
well up East shoulder, then  
back by Loch Ba to Salen for  
3 o'clock boat. Went across moor  
via Binn à Shraig.



- Arrackay -

← First attempt on  
Cobbler. 9/1900.

Second attempt. 1901.



Ben Lomond (3192)  
May, 1902.

From Rowardennan  
to  
Aberfoyle.

{ P.C.  
J.M.



- Goatfell - from Rose's Cairn  
1898.

{ S.C.  
J.M.





Breit horn

Klein-  
Matterhorn.



Matterhorn.



Monte Rosa.

Switzerland  
June 1902.  
P.C.  
J.M.



Matterhorn.



↑  
Rothorn.

↑  
Weiss horn.





Carn Dearg.



The Tower.



Panorama of N.E. face.

Ben Nevis (4109)

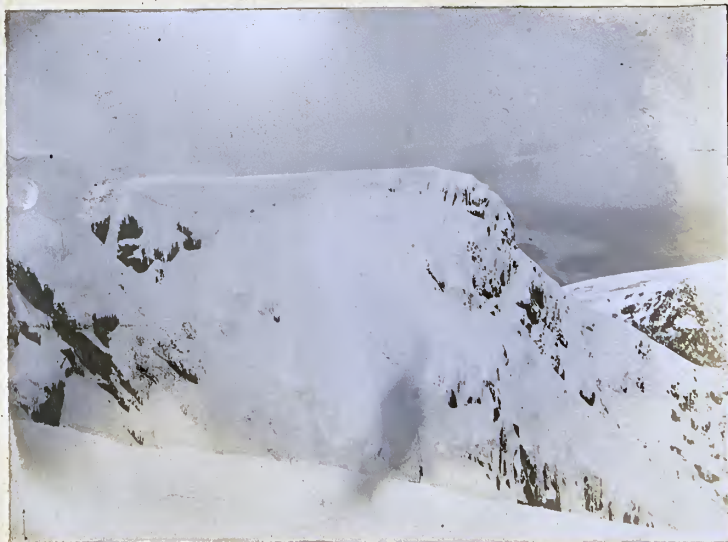
19 April 1903.

Ascended by path, then  
down into Glen Nevis.  
Frost on Summit; snow  
hard.

S.J. }  
A.S. }  
H.M. }



Carn Dearg (South) Corrie.



← Loch Eil

Summit of Tower Ridge  
from Cairn.





Lower Ridge, - Ben Nevis. (S.S.)



Observatory Tower.  
10 feet of snow.



Caledonian Canal &  
Ben Nevis.





*Peaks of Jura.*

*Cycled from Machrie to Port Ashaig. Rowed  
across Sound and ascended Beinn an Oir  
and Beinn a' Chaolais.*

*Jura.*

*{ J.M. 23 August 1903.  
H.M.*



*Beinn an Oir,  
from B. a' Chaolais*



*Cairn, - Beinn an Oir.*

*Also ascended Sgor Bhogachain  
in Islay, from which a splendid  
view was obtained.*

*19 August 1903*

*{ J.M.  
H.M.*





Centre Peak, and Jean.

-: Coddler:-

Xmas, 1903.

Left Glasgow by 8.4am.  
 Ascended snow-slope to  
 Jean col, thence to summit.  
 Rocks glazed with ice.  
 Returned by 3.36 (PM).

S. J.  
 J. A. M.  
 J. M.  
 H. M.



From Rannain Slopes.



North Peak from Jean.



↑ S. J.  
 ↑ J. A. M.  
 ↑ J. M.

The "Coddler."



a.s.  
↓

S.J.  
↓



Ben More (3843)

and

Stobinian. (3827)

12 March 1904.

Right train to Crianlarich (2:30 am)

Al fresco breakfast in Station.

Left at 6 am. - Ben More 9 am.

Stobinian 12:40. Loch Doon 2:30.

Strachyze 5:15 AM.

{ S.J.  
a.s.  
H.M.

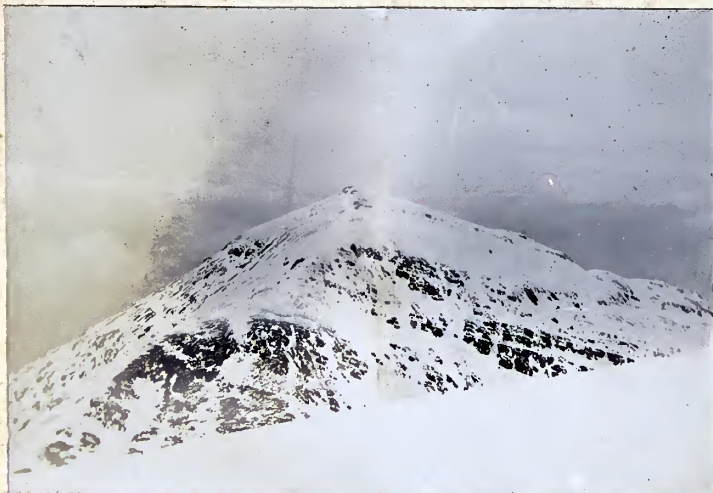
Ben More Cairn - blizzard.  
(9 am.)



+ a.s.

← H.M.

Col, and Stobinian.



Ben More. (3843)  
from Stobinian.



On Ben More.



S.S.  
↓

S.J.  
↓



Summit of Stobinian.



From Lyndrum.



S.W. from Stobinian.





Saddle from Sully.

Arran.

Sat. Friday, 1904

From Glen Rosa up Sully to  
Loatfull, thence to Ambinich.  
Rain, Snow, Frost and Wind.

N.M.

1/4/04



← N.M.  
by himself

on Loatfull.



Cir Mhor from Glen Rosa



from Loatfull.





Coire Ian.



Garbh Allt. 18/4/14

Arran.

16 April 1904

Soat fell from Brodick,  
Stacach, Coire Ian, to Corrie.

J.C.  
m.c.  
K.C.  
P.C.  
S.J.  
H.M.



Soat fell.

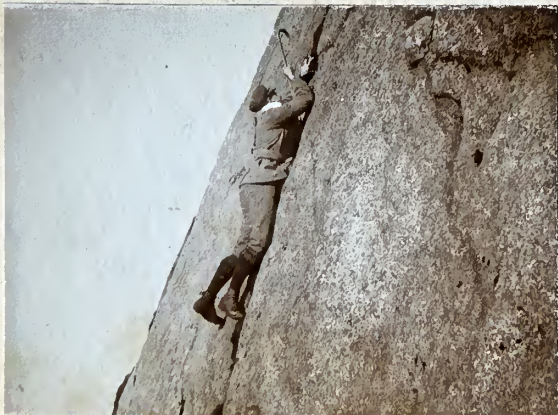
Arran.

18 April 1904

Glen Rosa, Garbh allt to Beinn  
a Cliadhain to Col to A' Chir,  
thence by Coire Daingean to  
Brodick for mid-day Steamer.

S.J.  
H.M.

to Ben Tarsuin  
↓



Tut! Tut!  
S.J. - B. a Cliadhain.



← A' Chir col.

← Coire Daingean

S.J. photographing A' Chir (see over)  
from Col



Point reached 15/4/4



← Cir Mhor

A' Chio, and Cir Mhor.

from B. a Cliebhair.

Arran,  
12/4/04

Castles  
↓

Saiche Shearshus  
↓

Man →



← Seatfoll

Binn a Cliebhair,

↑  
Cir Mhor

↑  
Saddle, Glen Rosa.





Ben Lui (3708)  
from B.OSS.



— Ben Lui —

Summit Cornice.



Ben Lui  
from Summit of B.OSS.

Tyndrum.

24 May 1904

Left Edinburgh by 4.30 a.m. train.  
Tyndrum Hotel 8.15, thence in rain  
and mist by N. of Carrick to Summit  
of Ben Lui (12.20 P.M.). Thence to Ben  
à Clè, Ben OSS, and Ben Duchray. Day  
cleared up at 1 P.M. Glorious views  
Ben Nevis to Ben Lomond; glissades  
on Ben's OSS and Duchray.

J.F.  
A.S.  
H.A.  
H.M.  
W.M.W. } 9mo





Sgor nan Coireachan.  
 9 Loch Morar.  
 Ben Nevis  
 ↓



On Sgor Choilem.



← Streams

From Sgor Choilem (3164)  
 (S.E.)



Sgor nan Coireachan. (3133.)

— Glenfennan. —

17 July 1904.

Perfect day.

J.D.M. }  
 J.M. }  
 H.M. }





Loch Coruisk, and Coolins.  
19 July 1904.



N. Peak (from South)

— Coddler —

19 September 1904

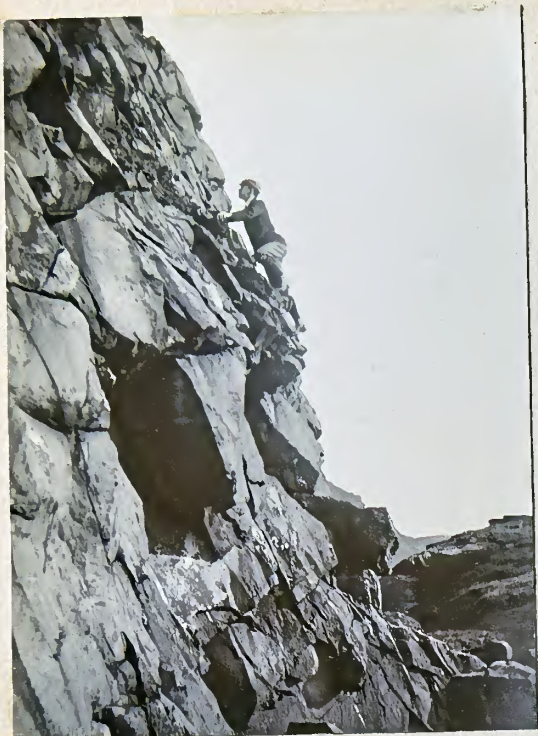
Left Glasgow by 10 train; Arrochar 12-15.  
Thence by Shearhead Arête to Narnain (2 pm)  
Traversed 3 peaks of Coddler to Jean (4 pm.)  
W by route 2 and down easy route.  
Brilliant day.

J.M.

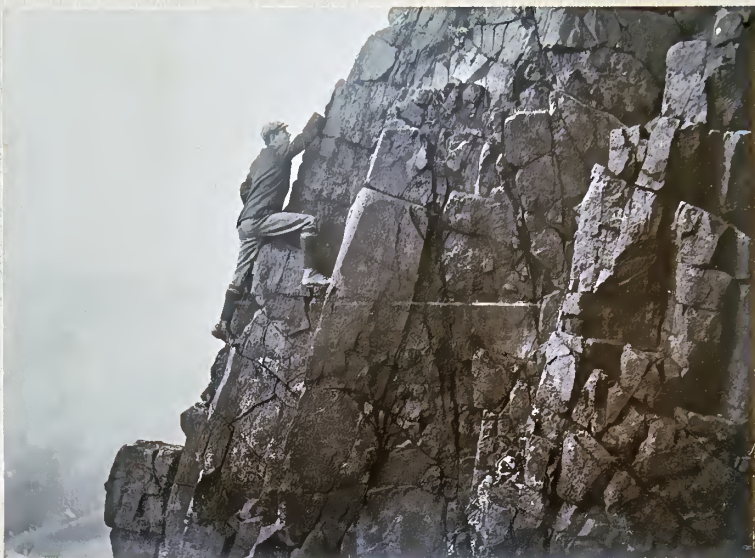


Jean (from N.)





Eastern Buttress  
Hm.



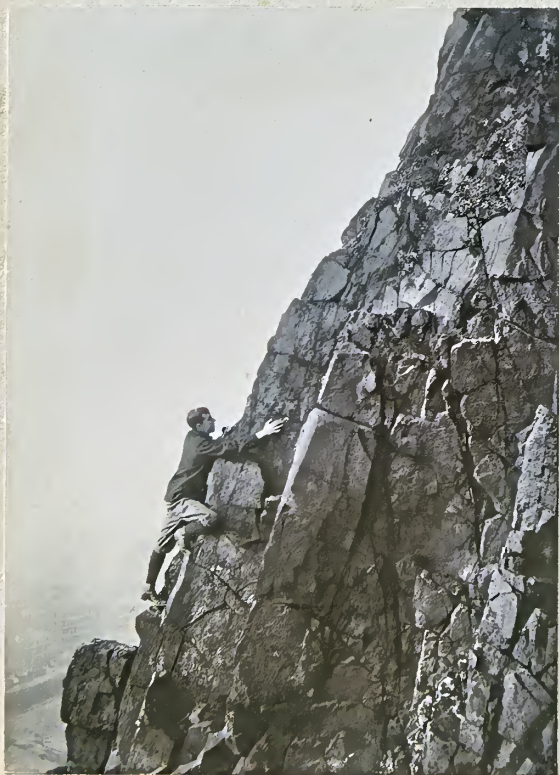
↑  
Shaky Block.

Cat Nick Arête.  
H.A.

Mauvais Pas →



Cat Nick Buttress  
H.A.  
W.S.



↑  
Prominent Block

Cat Nick Arête.  
Hm.

— Salisbury Crags:—

Photos.  
15 Oct. 1904.





*Carn Dearg*



*Douglas Boulder.*



*Bidean nam Bian.*



*Anoch Eagach.*



*Ben Nevis. (A.M.)*



*Ben More.*



*A.M.*



*Iron Creise.*



*Stob Coire a Lochan.*

*See Journal  
Vol 8, p. 181*

*Photos. from J.G.*





Eiger and Mönchjoch

(Photo. by E. R. H.)

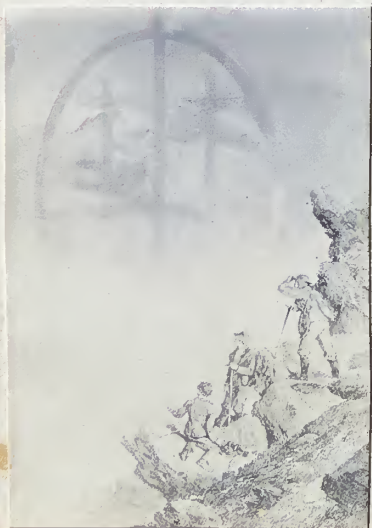


Qonack Dush.



Ben Lazi.

a.s.



Matterhorn. 1865.



Pentland Hills.

December 1903.





Buckhille Etive Mor. S.C.  
Kingshouse Inn.



Bà Bridge S.C.



Crowberry Ridge. F.S.





Buchaille Etive (3345)  
S.C.

Ben Nevis



← Mamore Forest

← Glencoe

← Glen Etive

From Buchaille Etive.

S.C.





Kingshouse Inn.

Sron Creise.

S.C.



On the Glachlet.

S.C.





Ben Vorlich (3224)

Gulley



Stuc à Chroin



A.E.M.K.

Ben Vorlich  
 & Stuc à Chroin

Left Edint. 7 train to Kingshouse.  
 Thence over hill to Glen Ample,  
 Vorlich; - 12:15 PM. Thereafter  
 ascended snow gulley on Stucky.  
 Snow frozen hard; 2 hours step-  
 cutting. Strathyre at 6:15.  
 Perfect day, hard frost and  
 beautiful views.

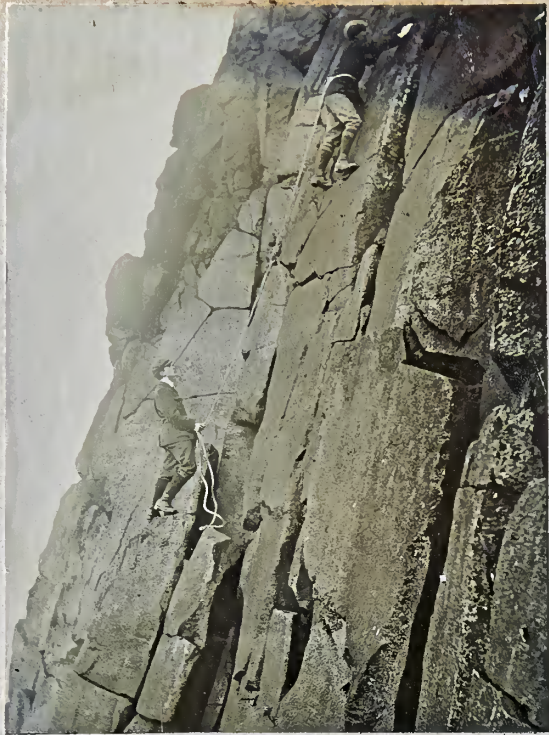
A.E.M.K.  
 H.M.

26 Decr. 1904

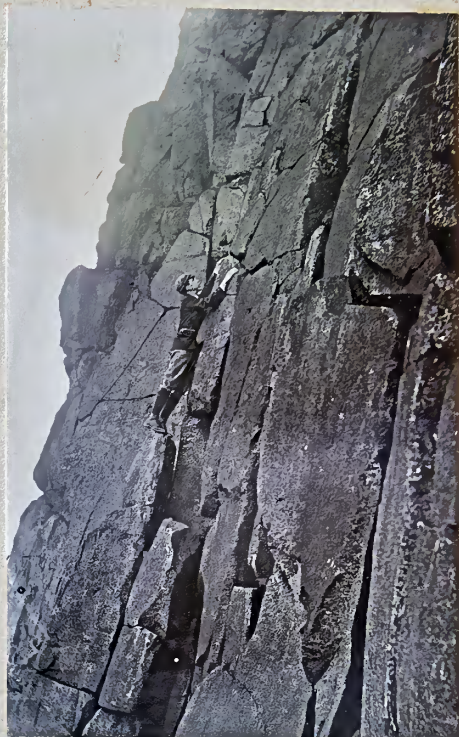


Stuc à Chroin (3189)  
 from  
 Vorlich.





*Cracked Slabs Route.*



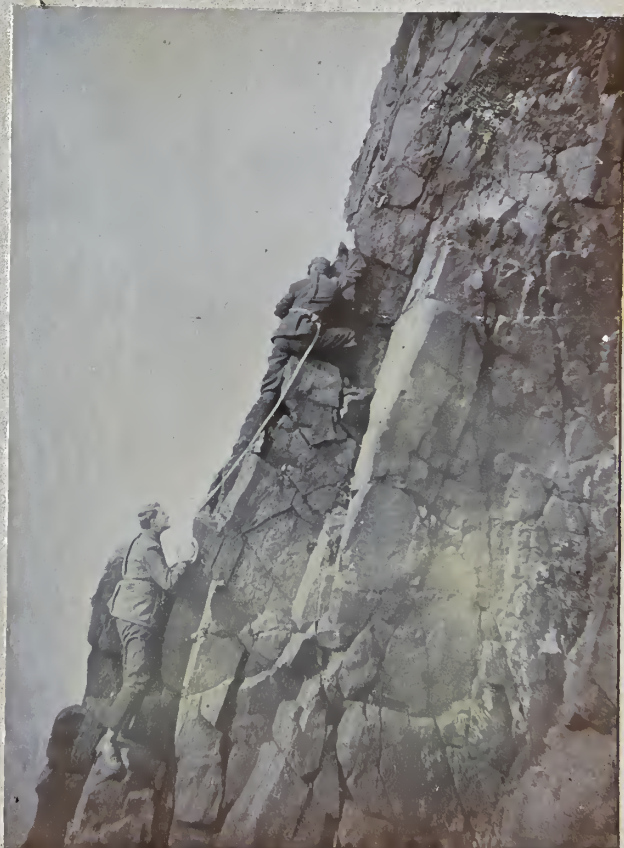
*Cracked Slabs Route.*

Salisbury Crags.

March 1905.



*Great Cornet Climb.*



*Cat Neck Arête*





A.S. →

← S.J.

↑  
M.M.

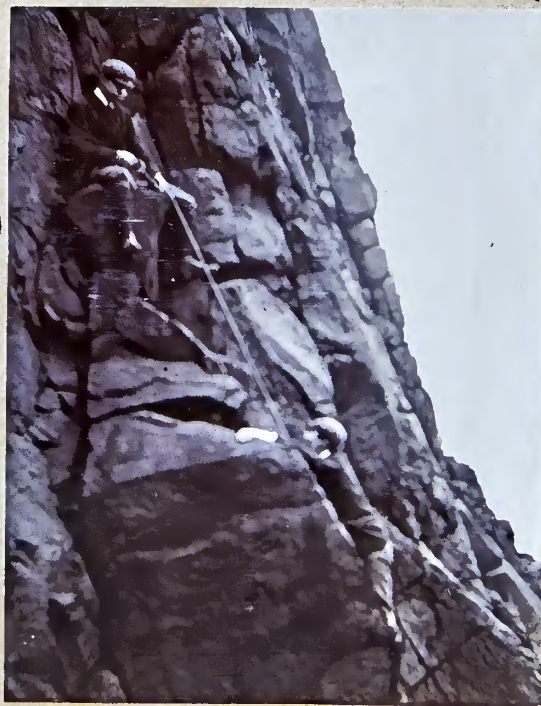
→ Ben Cruachan. ←

Night train (9-45) from Edinburgh on 24<sup>th</sup>.  
 Arrived 3-30 am. at Loch Awe. Breakfast  
 in Waiting Room, then started at 6-30.  
 morning dull and cloudy, with mists  
 down to 1000 ft. Ascended via Cruachan  
 Burn and Meak Cuanail to Summit 11-30.  
 Slissaded down about 200 ft slowly thro  
 mist, then back to Hotel at 2 pm. Snow  
 deep and soft till near summit. S.J.

A.S.  
 M.M.  
 25 Mar/08



On Ben Cruachan. (3189)



Car Nick Buttress.  
 "a slip!"





Benduz (3708)

R. Noble



River Orchy and  
Creanlarich Group.

R.C.





— The Second XI —

Bridge of Orchy  
1/15.



Ben Vorlich.



— Stuc à Chroin. —





"Mauvais Pas"



"Traverse"

J.B.

C.B.

H.M.



On a'Chir

Arran

22<sup>nd</sup> - 24<sup>th</sup> April 1905

Saturday: - Left Brodick at 10 am. met  
C and J. Burns en route; then  
to Coire Daingean. Climbed via  
Cave to a'Chir Ridge; across  
Mauvais Pas to Cir Mhor. Rosa  
Pinnacle, then to Saddle & home.

Monday: - Again to a'Chir (gap) via  
chimney; then to Castles and  
down into Glen Sannox.

C.B.  
J.B.  
H.M.



Cir Mhor from  
Castles



Cobbler.

Left Glasgow 8.31. Arrocked at 10.45.  
 Climbed North Peak by Right Angle  
 Gully. Traversed three Peaks and  
 ascended Jean by new route as  
 shown. Heavy mists and rain.  
 Rocks like cataracts.

J. C. Thomson.  
 W. Helmes.  
 N.M.

May 25, 1905



"Jean"



Inveroran.

We start on our 10  
 day's pilgrimage

J. C. B.  
 S. J.  
 N.M.

3 June 1905.



Buchaille Etive.

Under the  
 Crowberry Ridge



Buchaille Etive (3345)

Summit  
 Snow in June





Stob Coire an Lochan

4 June 1905  
Kingshouse  
to  
Clackaig.



Bidean nam Bian. (3766)



Clackaig Inn.



Donach Eagach (3168)

Clackaig Inn  
to Fort William.

Via Donach Eagach, & Wade's Road.



Kinlochleven

"Nairidne"

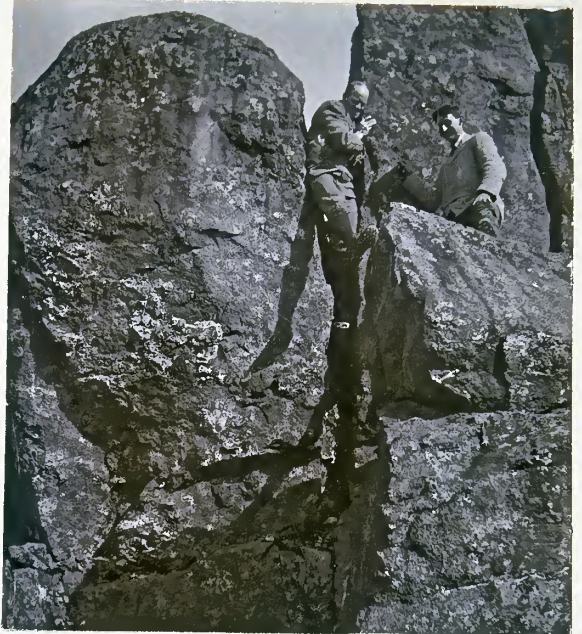




*Mallaig to Broadford*

*Thence walk 15 miles to Sligachan*

*6 June 1905.*



*Sgurr nan Sillean,  
Descent of West Ridge.*



*On S. nan Sillean.*

*From Sligachan Inn via Pinnacle  
Route to summit of S. nan Sillean.  
Perfect day and view.*

*7 June 1905.*



*Sgurr nan Sillean. (3167)  
Summit from West.*



Pinnacle Route.

1<sup>st</sup>

2<sup>nd</sup>

3<sup>rd</sup>

4<sup>th</sup>

West Ridge.

"Sendarne"  
↓



ABRAHAM  
G. PHOTO  
LONDON  
155

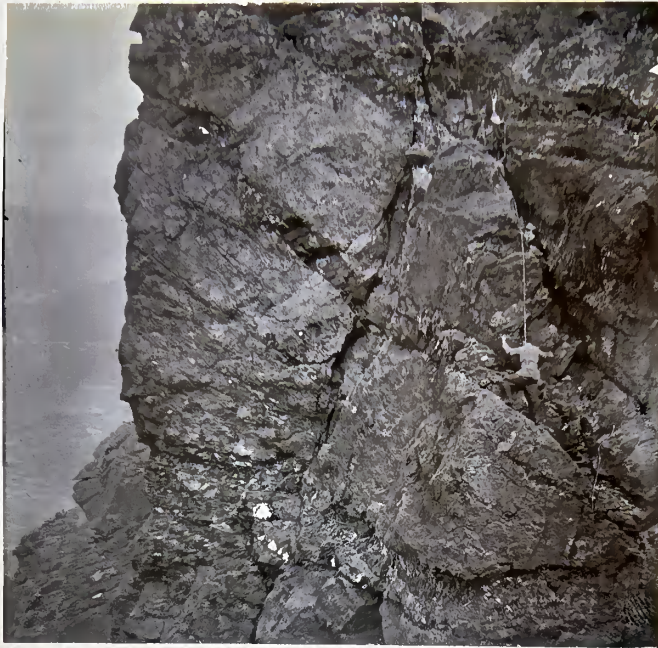
Sgurr nan Gillean. (3167)  
" "





Pinnacle Route.  
— Descent of Third Pinnacle. —





— Descent of Third Pinnacle —



Clouds on Blaven

S. Alasdair  
↓

S. Dearg (3234)  
↓



Coolin Ridge.  
from North.



*Bhasteir Rock*



*"Sondarmé"*



*—Sgarr nan Sillean—  
West Ridge.*





S. nan Gilleann, West Ridge.  
 "Over the Gen darmé"  
 " "



Sgurr Alasdair. (3255)  
 Carrie Ladain / S.P.A.



Summit of S. Alasdair.  
 " "



We say good-bye to Ewen Campbell!

From Sligachan to Glen Brittle, to  
 Ewen Campbell's, thence (2-30 P.M.)  
 to Sgumain and along Ridge to  
 Sgurr Alasdair, and down by  
 "Stone Shoot".

8 June 1905  
 " "

9 June 1905





Observatory. Ben Nevis.

9 June 1905. Glen Brittle, - via Loch Coruisk  
and Camasunary, to Broadford.

10 June 1905. To Fort William.

11 June 1905. Left Ft. Wm. at 11 a.m. for  
Carn Mor Dearg, then via  
arête to Ben Nevis. Glorious  
views all day.

End of the Pilgrimage.



Mackenzie, Steig & Coq.

Half-way hut on  
Ben Nevis.

June 1905.



"Lower Sap,"  
Ben Nevis.

A.S.

W.S.

June 1905



Glencoe



Loch Leven  
& Glencoe



Jm. at cairn on  
Sgur Dearg  
(3,362)



Sgur Dhonuill (3,284)

Port Appin.

Ben Vair.—

From Ballachulish over  
Sgur Dearg & Sgur Dhonuill  
to Duror Inn. Thence  
walked home.

16 Aug. 1905  
Jm.  
Hm.

Ben Nevis



Sgora Maain



Stob Ban



Mamore Forest.—

Steamer to Fort William  
(12-40) then up Glen Nevis to  
houses. Thence up Stob Ban by  
ridge (3-15) Brilliant sunshine  
and glorious view to S. and W.  
Thereafter to Mullach nan Coirean,  
then south across Wade's Road  
over hills to Ballachulish Ferry  
and Pier (7-15)

22 Aug 1905

Hm.



Ossian's Cave

Cycled from Appin to Slencoe  
on evening of 26 Aug. Slept in  
Barn at Acha Briachran. Left at  
8 a.m. climbed direct to grass  
slope below Cave & then into it.  
Descended by usual route (3 P.M.)

27 Aug. 1905

H. S.

E. R. B.

H. M.



H.S. and E.R.B. in Cave.



H.M. & H.S.  
in  
Cave



Looking out of Cave across  
Slencoe.

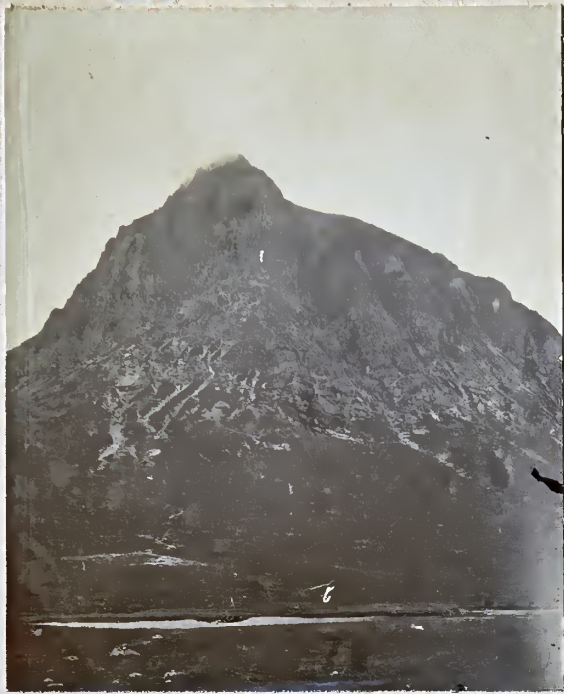


Cave →

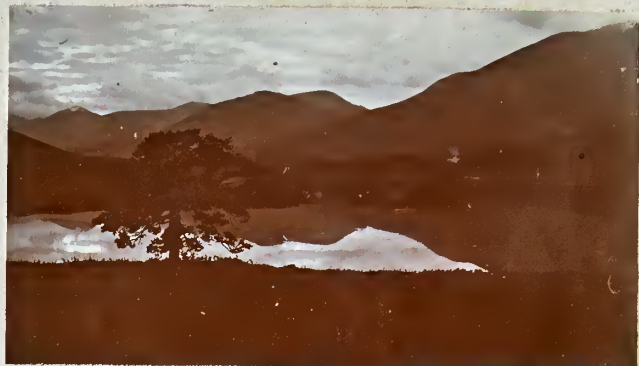
← Cliffs of Aonach  
Dubh and Slencoe P.  
from outside Cave.



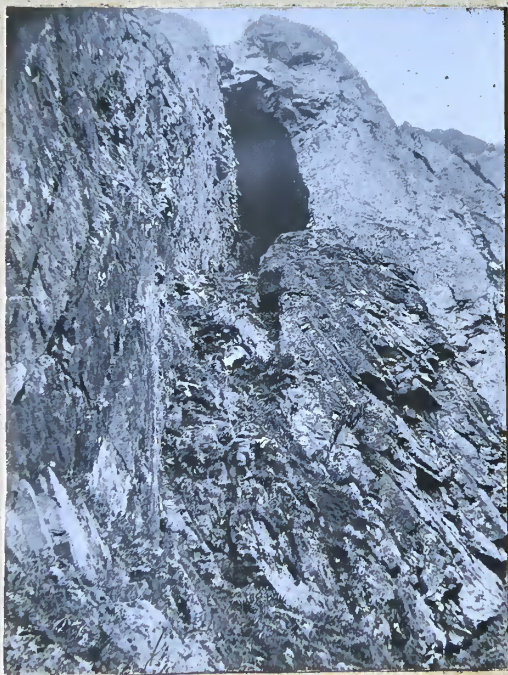




~ Bucharille Etive ~



Sunset over the Black Mount  
 Having climbed into Ossian's Cave, left at  
 4 P.M. and cycled to Arrochar (9 P.M.)  
 27 Aug. 1905  
 H.M.



Looking up Ossian's  
 Ladder into Cave.



Arran

25<sup>th</sup> Sept. 1905.  
 To Brodick by morning steamer (11 a.m.)  
 Thence to Ben Nuis, Ben Tarsuin and  
 over R'Chair Ridge. Home via Glen  
 Rosa & stayed night in Riddoch's (4/6)  
 Perfect day.

Eliza R.N.  
 N. McNaab  
 H.M.



Upper Couloir  
↓



Stob Sabhar (3541)  
from Corrie Bà



On Stob Shadhar, -  
below Couloir

- Tyndrum -

New Year Meet of Club.

Jan'y. 1906.

Saturday. - To Stob Sabhar to  
try Upper Couloir. Failed  
at second hitch, then to  
Summit by N. ridge (4 P.M.)

J.S.  
S.F.C.  
J.A.  
A.M.



Summit of  
Stob Shadhar at sunset





In Corrie Bà.  
Sunrise over Moor  
of Rannoch.

Sunday. — To Ben Lui via Stob  
Sharb ridge. Very windy  
and cold.

W. G. M.  
J. N. McS.  
A. B.  
H. M.

Ben More  
↓ Stopinian

Loalach Ardhan  
↓

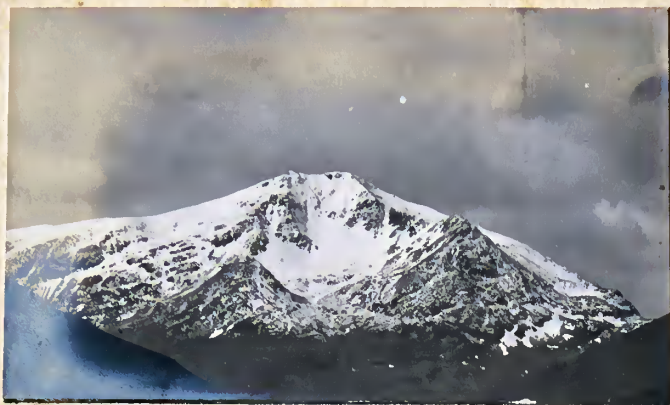


Monday. — To Ben Chaluis  
and back by 3 P.M. Again  
very cold, but view to S &  
E. superb.

J. W. B.  
W. A. M.  
W. G. M.  
H. M.

View from Ben Chaluis  
looking South.





Ben Lui (3705)

"Arma Virumque"



Slen Etive  
↓

Glencoe  
↓



Ben Lui — To Tynarum by  
5:50 train, thence at 8:15 to Big  
Carrie. Up N. Central Gully,  
snow in good condition. Top 2-15  
Descended by Stob Sarve; top 300  
feet ice slope; then glesaded into  
Carrie. Home by 5:22 train.  
Splendid day, a good views.

31 March 1906 W.B.  
H.M.

← Kingshouse Inn 7

Buchaille Etive (3245)

Church Door Buttress  
↓



Kingshouse — Easter Meet, 1906

14 April — Saturday. Walked 8 miles to  
Clackaig; met Macalister then  
up Bidean past Buttress. Down  
by Ant-Sron ridge.

W.B.M.  
H.M.

16 April — Monday. In driving rain  
& dense mist down Slen Etive  
5 miles. Then N.E. to Aonach Mor  
and along ridge to Stob Shadhar  
and so to Inveroran (2-45, 6 hours)

F.S. Loggs  
H.M.

↑  
W.B.M.

Bidean nam Bian (3766)



J.C.F. W.B.



C.I.C. D'W.I.C. Morkenzie

— Arran —

Evening boat on Wednesday to Brodick. Left at 8 am. on Thursday for a'Chir Ridge. Dense mist whole day; no rain on tops. Over ridge to Cir Mhor, Castles, thence over Witches Steep & down to Sannox.

— Victoria Day —  
24 May 1906.

J.C.F.  
W.B.  
H.M.



Mhaidairh

S nan Sillean

Long Ullèn Harry Walker

— SKYE —

June 1906.

Right train to Oban; boat at 6 am via Mull, Eigg, Rum, & Canna to Loch Bracadale (4:30 AM) Thence drove & walked to Ewen Campbell's in Glen Brittle (10-30)

Sunday, 17<sup>th</sup> June.

Climbed to Tearlach. Mhic Cormnich col, thence via King's Chimney, Graig leading, to summit. Slept there.

J.C.F.  
W.B.  
H.M.



Graig & Thomson on Mhic Cormnich.





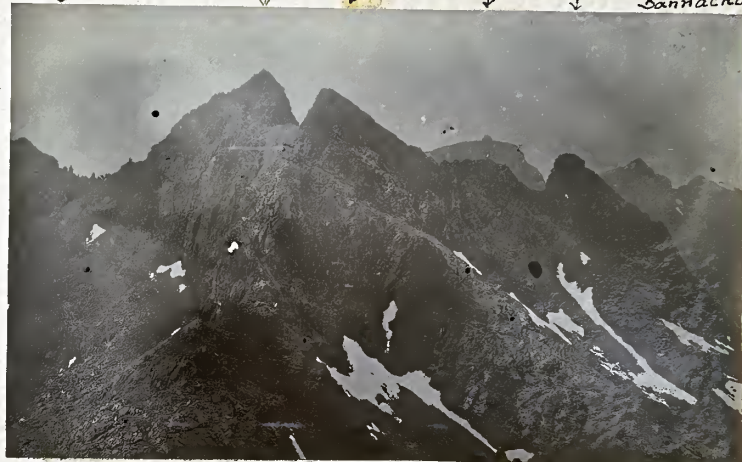
Entrance to Coire Shrunnada (2220)  
showing glacier polished  
rocks.

Monday.

With A.E. Robertson to Coire Shrunnada  
After bathe to Sgur Dubh na Dabheinn  
(3069) Thence along ridge to  
Alasdair-Dubh Sap. A.E.R. & I took  
photos of long side, then followed  
over Tearlach to Maic Coinnich Col  
& so to Glen Brittle. Very fine day  
with splendid mist effects. Good  
bathes in Lochan Shrunnada and  
in Sea at night.

J.C.Y.  
F.S.  
C.M.  
A.E.R.  
H.M.

Sgumain Alasdair Tearlach Dearg Maic Coinnich Bannachdich



Coolins from Sgur  
Dubh na Dabheinn



Head of  
Stone  
Shoot

Sap →

Ascent of long  
side of Sap.



Lochan Shrunnada

Thomson

Greig





Inaccessible Pinnacle  
of Sgurr Dearg.

Thomson →

Robertson →



Descent of Pinnacle.

Tuesday

Whole of party to Sgurr Dearg to  
Pinnacle. J.S. and I up steep side  
and down long; A.E.R. and J.C.S. up  
long and down short side. Mist & rain  
came on just as we left top.

J.S.  
7.5.  
a.m.  
A.E.R.  
J.M.



Side of Pinnacle

J.C.S. →

← A.E.R. →

← J.C.S. →



Descent of Pinnacle  
Showing first hitch





J.C. Thomson.



N.M.

Wednesday: Rained outside.  
Slept inside.  
A.E.R. left for  
Sligachan.

Thursday: J.C. and I walked over  
to Sligachan with our packs  
via Bealach a Mhairn.



Blaven  
& Clack Phlas  
" "

— Sgurr nan Gillean —  
from Bhasteit.





Bhasteir Tooth

Friday:- From Sligachan via Fionn Coire to Bhasteir Tooth. Ascended via Naismith's route; centre hitch has very small holds, while hand traverse at top should not be done with rucksack! Thence over Bhasteir and down by Coire Bhasteir. Left that evening for Portree.



Sligachan Inn and  
Sgurr nan Sillean.





Ewen Campbell's Cottage



Glen Brittle



Tearlach & Alasdair  
from Mhic Coirnich



A. R. in N. Glen Sannox

Arran

26 Aug. 1906

Lochranga - To Loch na Davie in rain & mist  
thence over Castles and down to Witches  
Stch. Descended to N. Glen Sannox & home  
by road.

R. Roberts  
Jrn.

Cobbler

Saturday afternoon excursion. Left by  
12-40 train. Visited three peaks, and  
back to Hotel in 3 1/2 hrs. Home by 7-50.  
Heavy showers, with bright glimpses.

A. J.  
J. J.  
Jrn.

17 Sept 1906