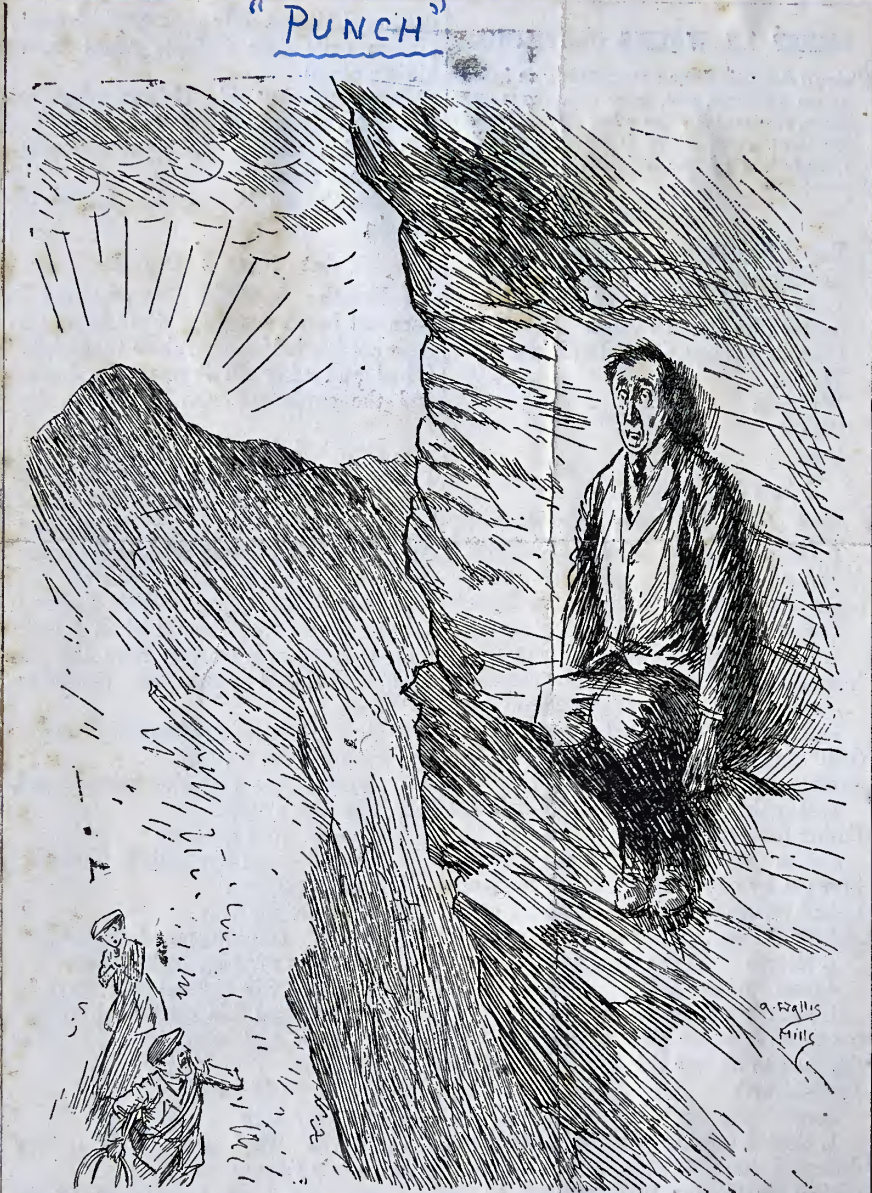


"PUNCH"



Friend (below). "ALL YOU'VE GOT TO DO WHEN I THROW YOU THE ROPE IS TO MAKE IT FAST TO THAT PROJECTION OVER YOUR HEAD, AND LOWER YOURSELF DOWN!"



*H. MacRobert.*

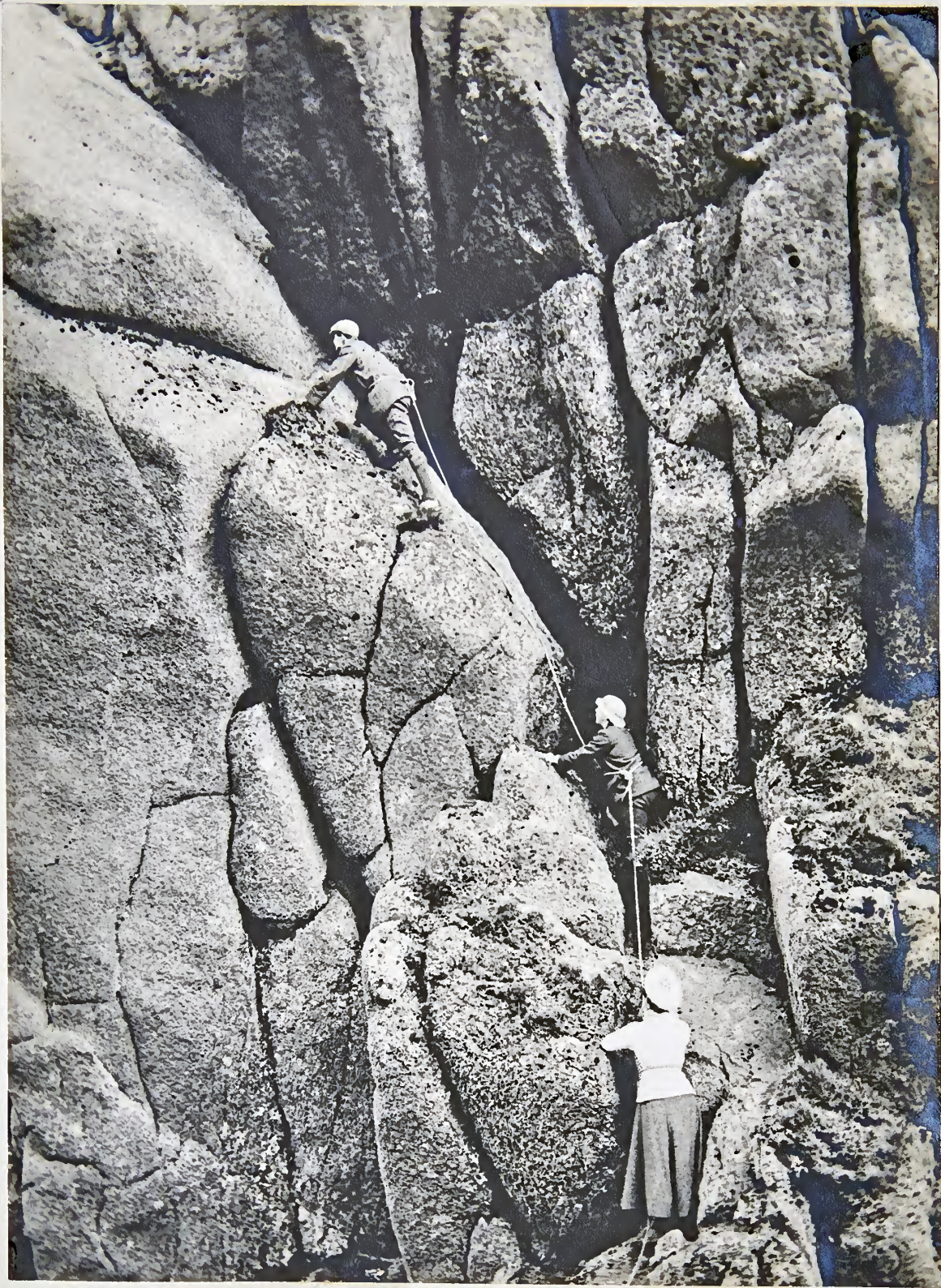
*Sept. 1906.*

**VOL. II**



MR. A. F. MUMMERY





— Ascent of Carlin's Leap —

Arran

24 Sept. 1906.



J. Greig S. Cumming C. Morris



S.F.M.C.

Glen Brittle - 1907

*Signature*

J. Greig

E.R. Beard. A.W. Peacock.



S.F.M.C.

Trndrum Road

April 1906



← C. Morris

← J. Greig

S.F.M.C.

Alasdair - Dubh Saik  
1907.



W.N.N.

Sgurr Dearg & Pinnacle



J.M.

Camp Bell's Cottage  
Glen Brittle.





Summit of Castles.



Rosa Pinnacle



Hugh N. on Castles.

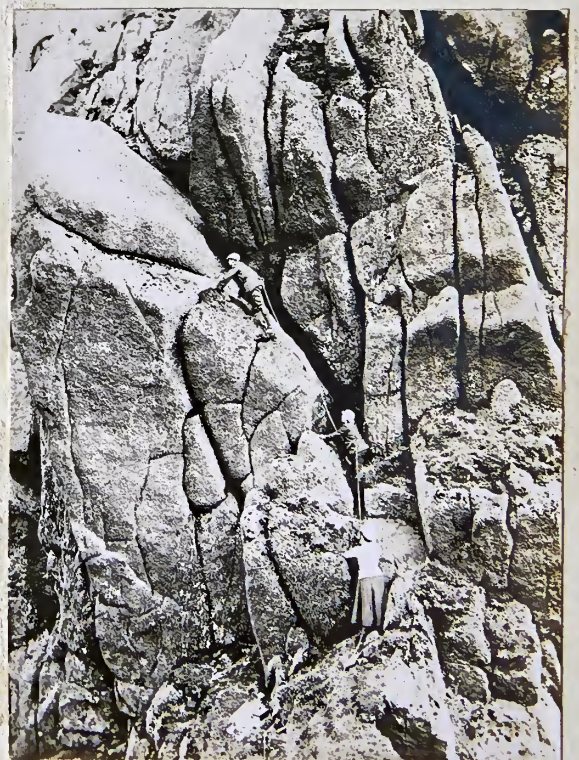
Arran

Kings Cross - Steamer to Brodick, thence up  
 Glen Rosa & over W. of Cir mhor to Castles.  
 Along ridge to Steh, thence climbed to  
 Summit, then down Glen Sannox to  
 Corrie Hotel. Drove to Brodick. Very  
 fine day with beautiful mist effects.

Eliza K. H.  
 H. H.  
 H. M. N.  
 J. M.  
 24 Sept. 1906



Goatfell and Cir mhor  
 from Castles.



Witches Steh.



C. Clark

J.C.F.

S. Jack

W.S.M.



In Glen Sannox on route for A'Chir.



S.J. in N. Glen Sannox

W.W. Neismith

W. Nelson

J.H. Macintyre

Eanie

S. Jack.



On Seat of Fergus



S.J. and Eanie on Carlin's Leap

Corrie, Arran.

New Year, 1907.

Sunday, 30 Decr.

Ascended Clogh na L'Oighe & N. Boatfell in dense mist and snow. Snow lay well down in valleys during whole meet. J.C.F. J.M.

Monday, 31<sup>st</sup> Decr.

Over Col between Castles and Cirmhor to A'Chir; then to Summit. Good climb over frosted rocks in strong wind and snow. J.C.F. W.S.M. E.C. S.J. J.M.

Tuesday 1<sup>st</sup> Jan.

Up Seat of Fergus to Carlin's Leap. Down to Col & then S.J. and J.M. home to tea. Rest had stiff climb up to Castles and home at 4.30. Bright day. W.W.N. W.N. J.H.M. Eanie S.J. and J.M.





— Ben Nevis —  
from Aonach Mor (3999 ft.)

— Fort William —

Easter 1907.

Saturday - 30 March.

By Spean Bridge road (3½ miles) to Aonach Mor  
then along ridge to Aonach Bheag (4060). Came  
home over Carn Mor Dearg. Perfect day with  
glorious views from  
Skye to Arran.



Ben Nevis & Carn Mor Dearg (4012 ft.)  
from Aonach Mor.

J.C.J.  
R.A.B.  
J.S.F.  
N.D.  
H.M.





~ Over the Cornice of No. 3 Sully. ~

~ Sunday - 31<sup>st</sup> March ~

Left Alexandra at 10.30 for Ben Nevis.  
 Went by path then round into a còr à  
 mhuillín & after lunch climbed No. 3  
 Sully, which was in verry easy condition.  
 Joined forces with Workman's party  
 at top of Sully & then over summit and  
 glissaded to arête, then great glissade  
 into Coire Leas. Straight down Glen to  
 road & home 9.15. Bright day with  
 strong wind.

J.C.J.	} E.R.W.
K.A.B.	
N.D.	
Ednie.	
S.M.	
	W.S.M.
	R.Y.



Lower Ridge from No. 3 Sully



In Corrie na Ciste  
 Ascend to No. 3 Sully.





On cornices of Aonach Mòr  
"Loggs loses a 3<sup>rd</sup> bit"



Ben Nevis from Aonach Mòr



Over cornice of Aonach Mòr  
"a drop into nothing beneath you  
as straight as a beggar can spit!"



In Corrie na Ciste

~ Easter, 1904 ~



~ Aonach Mòr (3,999 ft) ~





Summit Cornices on Stob Bàn

~ Easter, 1904 ~

Monday, 1<sup>st</sup> April ~

In cloudy weather up Glen Nevis to Mause then to summit of Stob Bàn, along ridge to Muirach nan Coirean. Good glissade took us well down into corrie & so home by Glen

R.A.B.  
J.M.



R.A.B. under snow cornice



J.M.  
on Stob Shabhar.



N.E. face of Stob Shabhar (3,565 ft)  
Showing Upper Couloir

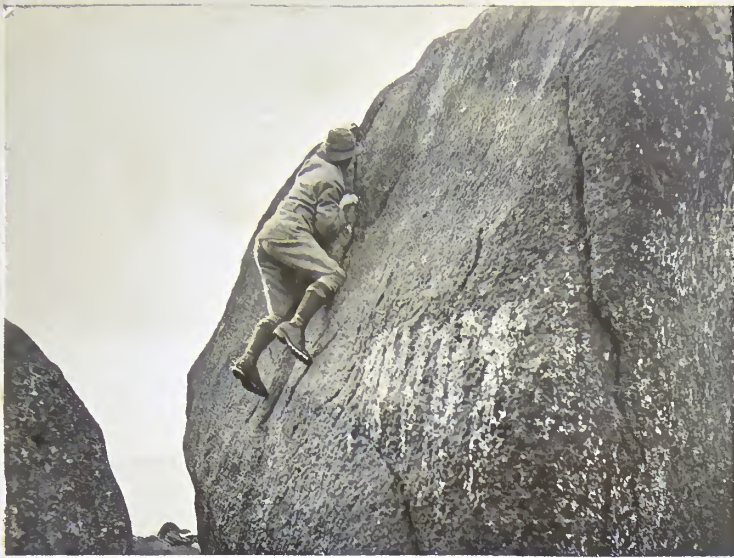
~ Stob Shabhar ~  
23<sup>rd</sup> May, 1904.

Inveroran Inn ~

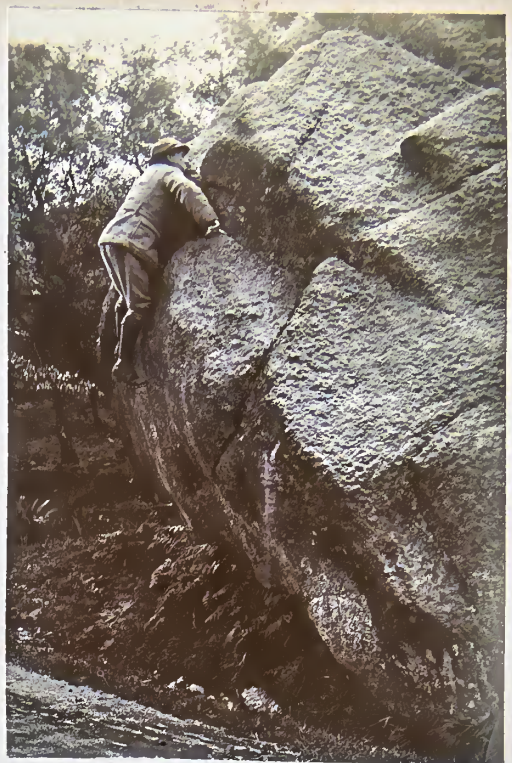
Left at 7.45 am and followed Deer Path and so round to N.E. Corrie. Climbed to cairn via Upper Couloir. Snow fairly soft, but second pitch very bad with blue ice and rotten rock at edges. Got back at 2.45 PM and caught afternoon train at Bridge of Orchy.

J. Burns  
J.M.





~ J.M. on "Elephant Rock" ~



J.M. on "Cat Stone"



Cloch na h'oghe from  
Punch Bowl.

~ Corrie, Arran ~

16<sup>th</sup> June 1907.

Tried arête of Cloch na h'oghe, but  
had to traverse to right. Then round  
Punch Bowl and back to Hotel.

J.D.M.

A.S.C.

J.M.



~ Sannox ~

Suidhe Shearphas.

~ Arran ~

Sannox.

7 July 1907. Up Seat of Fergus from N.E.

& down into Glen Sannox.

D. Gibb

J.M.

J.M.





Pinnacle on N.E. Ridge of Blaven



North Corries from Blaven.



A sodden trio at Sligachan

SKYE, June, 1904

W.A. Morrison  
A.A. Brown  
J.M.

Sunday, 23<sup>rd</sup> June. Left Broadford in bright sunshine for Blaven via Torren. Climbed in rain & mist by buttress north of gully between the two tops, taking 2 1/2 hours over slabby rocks. Splendid views from top, then to C. Shlas col by new route & on to Sligachan at 10-30 P.M.



On Blaven (3040 ft) looking South.



East from Blaven.





West Ridge of Sgurr nan Sillean  
from Bhasteir.

Monday - Rained heavily all day; rested,  
sorted camera & re-nailed boots.

Tuesday - To summit of S. nan S. by Pinnacle Route  
in very heavy rain and dense mist. Then  
along West Ridge to Bhasteir. Weather  
cleared & sun came out. Traversed  
Tooth by Naismith's Route & home by  
Fionne Corrie.



Bhasteir Tooth  
showing Naismith's Route.



Blaven  
from Bealach na Leiteir



Pinnacle Route and  
Sgurr nan Sillean

Wednesday - Very wet - crossed  
Bealach à Mhaim to Glen Brittle  
& put up with Greig & Coy at  
Kwen Camhbells.

Thursday - An Sgurr Dearg to  
Inaccessible - Hail, rain & mist.  
Saw us climb & returned to  
Sligachan via Banach ùich Col  
and Corrie B.





East from the Red Hills



Slamaig (2537 ft)

The Red Hills

Beinn Dearg (390)



Sgurr nan Gillean  
from Slamaig

Friday - Cleared up at mid-day.  
Left at 2pm. and traversed  
Slamaig and Beinn Dearg  
round ridge to Sligachan.

Saturday - Went south from  
Portree to Arrochar where  
R.A.B. and I stayed weekend.



Mallaig  
with Egg and Rum.





~ Coddler ~  
from Narnain Boulders.



North Peak from Jean



~ Summit of Coddler ~  
+ Ben Lomon 2



Clouds on South Coolins

Arrochar.

Sunday, 30<sup>th</sup> June - Climbed Jean by S.E. arête, by routes "c" and "d". Then to Central Peak by arête, and by "McGregor Ledge". Up North Peak by "Right Angle Gully" and by MacLays Crack (best Variation). Across Ben Narnain & down by Spear Head arête, best climb of the day.





— Goatfell, Glen Rosa & Cìr Mhor —  
from Carlin's Leap.



Slab →

↑ — Peak of Carlin's Leap —

— Brodick, Arran —

Saturday, 10<sup>th</sup> August. Left at 9 a.m. for A'Chir Ridge. Showery day with bright links. Tried direct descent to corrie, but gave it up. Up Castles and down over Carlin's Leap to Sannox, & home by road.

Sunday, — Bad day, to Sannox and back by road.

R.A.B.  
A.M.

W. McDougall & guides  
on Summit of the  
Matterhorn (14780)

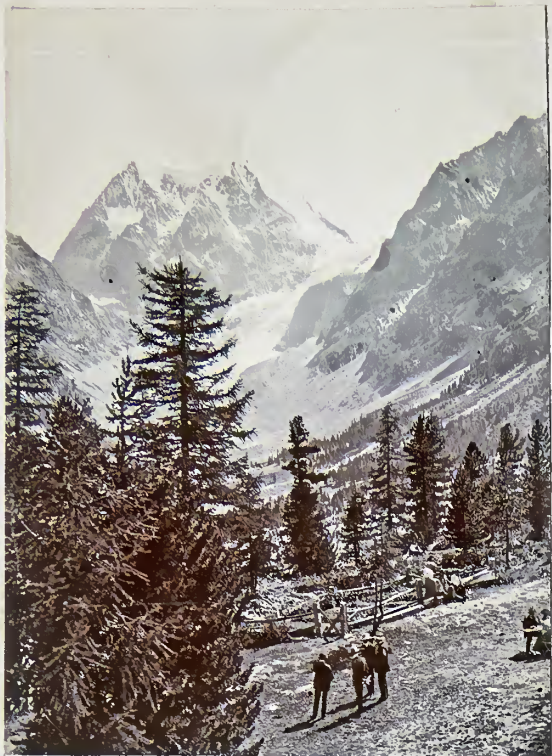


S.S. Arthur.

Augt. 1904

97





~ Mont Collon ~  
from Hotel.



~ Arguille de la Ta ~  
from Hotel



~ Mont Collon (11,957 ft.)  
et Glacier d'Arolla ~

Friday, 23<sup>rd</sup> Aug<sup>t</sup>

Traversed Mont Collon with  
Pierre Gaspoz. Left at 3:15 am.  
and back at 1:15 pm. Good climb  
but descent on East rather poor.

J.C.T.  
A.M.



~ Le Lac Bleu. ~

~ Arolla ~

August, 1907.

At Kurhaus from Sunday 18<sup>th</sup> till Monday 26<sup>th</sup>.  
Splendid weather the whole time, except Tuesday  
when it was dull with some rain. Arthur and  
Macdougall left on Monday 19<sup>th</sup> for Zermatt;  
Macalister on Tuesday (all via Bertol Pass) and  
Burns (via Lion and Visp) on Wednesday morn.





~ Pigne d'Arolla ~



~ Aig de la Tia ~



~ Mrs Thomson & J.L.T. ~



~ Lac Bleu et le Mont Collon. ~

Thursday—  
Spent day at the Lac Bleu, having  
lunch and afternoon tea.  
Very beautiful little place.





Mont Blanc de Seilon (12,701)



Runette, et le Grand Combin



East from Mont Blanc de S.

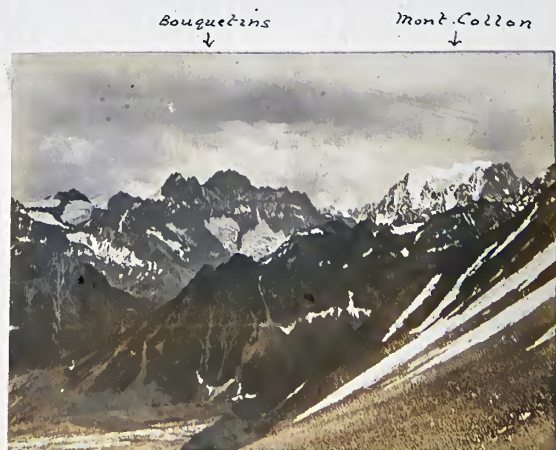
Monday, 19<sup>th</sup> Augt.

Climbed Mont Blanc de Seilon with Jean Rumps and two porters. Traversed from west to east, coming down good rock arête. Beautiful day and good views.

J.W.B.  
W.G.M.  
J.C.T.  
J.M.



"Tea" at foot of Mont Blanc de Seilon



East from Pas de Chèvres





La Dent Blanche (14,318 ft.)  
from Petites Dents



Sendarme on Petites Dents  
& Dent Blanche



Les Petites Dents de Veisivi  
(10,500 ft.)

Wednesday, 21<sup>st</sup> Augt.

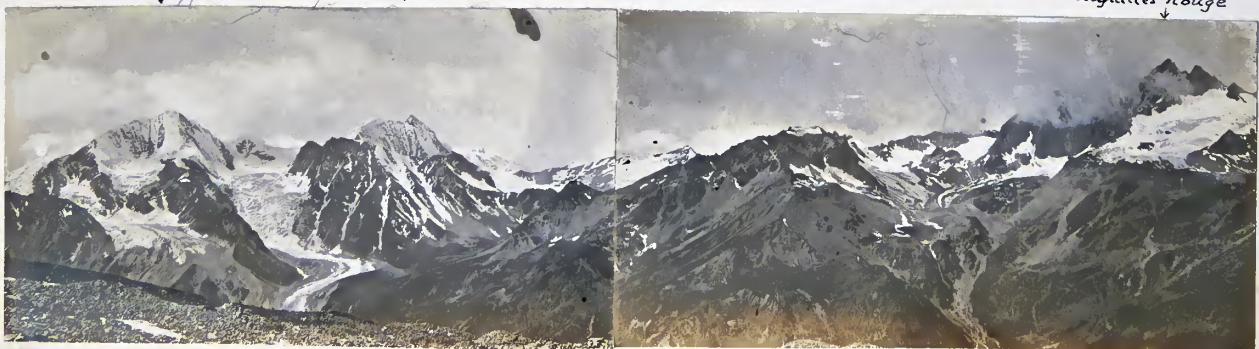
Left at 7 am. and traversed Les Petites Dents de Veisivi. Rock very good, but smooth. Splendid climb, specially the Sendarme. Day was bright and cold.

J. C. T.  
J.M.

Pigne d'Arolla

Mont Blanc de S.

Aiguilles Rouge



View looking S.W. from Petite Dent de Veisivi.



Grand Cornier

Sabelhorn

Dom

Täschhorn



Glacier de Ferpècle and  
Dent Blanche

Dent d'Hérens



Les Dents des Bouquetins  
from Bertol Hut

Monday 26<sup>th</sup> Augt.

Left Arolla at 2-45 am. and reached  
Bertol Hut at 6-30. Had breakfast there &  
watched sun rise over Dent Blanche. Started  
at 8 for Col d'Hérens across Glacier de Ferpècle  
& arrived at 9-30. Had great feed & rest at  
Stockje, then on to Staffel alh where J.C.T.  
left us & went down to Termatt. Rumps  
and I crossed over to Schwarzsee Hotel  
(2-45 am) & put up there. Most enjoyable day.

J.C.T.  
J.M.

Monte Rosa    Cervin

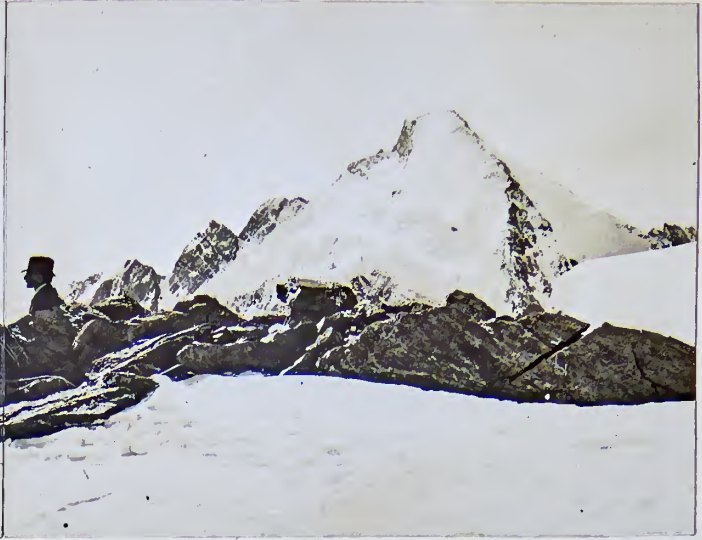


Glacier de Ferpècle &  
Matterhorn.





Matterhorn (4,705 ft)



La Dent d'Hérens

Le Col d'Hérens



Matterhorn  
from Stockje

Tuesday, 27 Aug.

Left Schwarzsee Hotel at 12:45 am. with Rumps in bright moon light. Had grub at "shoulder" where four other parties were. Reached top at 8:10 a.m. Splendid view of Mont Blanc & Aiguilles, the Grand Paradis, and the Oberland. Heavy cumulus clouds lying low over Italy. Back at Hotel again at 1:45 AM. Left at 3 for Zermatt.

Thursday, 29<sup>th</sup> Aug.

Left Mont Rose Hotel at 8 am. & wandered round by Riffelalp to Gorner Glacier & so round to Matterhorn Couloir of Riffelhorn. This we climbed in heavy rain and dense mists. Found smooth chimney above Cave very tricky! Back to Hotel for dinner having had no lunch - short day.

W. G. M.  
J. C. T.  
H. M.



Hotel Mont Rose



Suides at Zermatt

Zermatt



J.C.T. →



~ Lunch at the Allt na h'Uamha ~

~ Fort William ~

Autumn Holiday, 1907.

28<sup>th</sup> Sept. Left morning train at Tulloch, and climbed Creag Meaghaidh from Loch Laggan road. Came home over Benà Chaorunn<sup>(3434)</sup>. Very warm & slightly hazy. Evening train to Fort William.

J.C.T.  
J.M.



Creag Meaghaidh (3700)



← R.A.B.

← J.C.T.

~ Tower Gap ~

29<sup>th</sup> Sept. Left Alexandra at 10 am. for Nevis Corrie via Pony Track. After dachs and lunch, climbed Tower Ridge, R.A.B. leading. Omitted D. Boulder; climbed Tower by Recess Route. Tea in Summit Hotel. Beautiful day with rocks very warm & dry.

R.A. Brown  
J.C.T.  
J.M.





~ Glen Rosa ~ from Sardsh allt.

~ Arran ~

9<sup>th</sup> Nov. 1904.

Early Steamer to Brodick then up Glen Shant. Climbed to Little Pinnacle (quite good) then to Seatfall. Watched Sun set in swirling mists, then down to Brodick (Latona's) in dark by lamp light.

J. Martin  
J.M.

10<sup>th</sup> Nov. 1904.

Uk Coire Daingean to explore Chimneys. Then home over Tarsuinn & Nuis.

J.M.  
J.M.



~ J.M. on Glenshant Pinnacle ~



Greenwood Slingsby Seatrea  
Parsons Nov. 1904.



~ Arran Hills ~

~ Arran ~

28 Dec. 1904. Corrie Hotel. Uk Glen Sannox and to Witch's Stech via gully. Very icy & steps required, otherwise easy. Prospected alternative way up Peak, & sketched Cor Mhor face. Dull day.

A.S. Cree.  
J.M.



~ N.E. Buzzress ~

Tower  
↓



~ Allt a' Mhuillinn ~

1<sup>st</sup> January 1908. Climbed Castle of Carn Dearg taking 5 1/2 hours. Much ice-cutting & rocks badly iced as well. Difficult chimney near top. Over cornice after Sun-set & cut down in dark to Lochan.

W.A.M.  
W.A.M.  
W.G.M.  
J.M.



Sgur a' Choinnich Mor (3603)  
& Bheag

Ben Nevis  
↓

Carn Mor Dearg (4012)  
↓



~ Ben Nevis from above Steall ~

Ronach Bheag (4060)



~ A.S.A. and W.A.M. on Arête ~

2<sup>nd</sup> Jany. 1908. Left at 10am. and up to Allt a' Mhuillinn. Thence cut up to C.M.D. Arête where gorgeous view was witnessed at 3 P.M. None over Ben Nevis with perfect w/sunset.

A.S. Arthur.  
W. McDougall.  
J.M.



An Garbhannach  
from South.

~ NEW YEAR MEET 1908 ~

Fort William.  
Splendid weather each day with hard frost.

S.M.C. Journal  
Vol. X p. 112 (et seq.)





F.S. G. and W. G. M. on  
Stob Coire à Chairn (3219)



↳ Sun rise on Sgor à Mhaim  
(3601)

Binnein Bheag (3083)



↳ Binnein Mor (3700) ↳  
from West.

3<sup>rd</sup> Jan. 1908. Left F.W.M. at 6.20 a.m. and  
walked hard up Glen Nevis to Steall (2945)  
Thence over An Searanach, An Ghardhanach  
to Stob Coire à Chairn (11.45). Lunch there,  
left at 12.10 and ran to Corroir (4.45)  
via Lochs Fille, Mor and Beag. Most  
magnificent day, hard frost, bright sun.  
Train waited 5 minutes at C. for us

F.S. Goggs  
W. G. M.  
J.M.

↳ Arran ↳



Entrance to Glen Rosa  
with Ben Nevis in  
background.





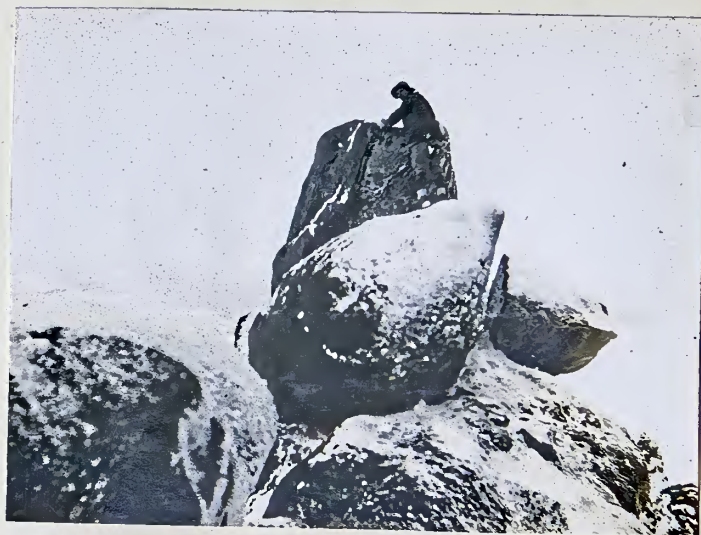
Ben Nuis Precipice



A'chir Ridge  
showing Ledge Traverse



Ben Tarsuinn & Goatfell  
from Nuis



Summit of A'chir



Ben Nuis

Arran

23<sup>rd</sup> Feb. 1908.

Weekend at Mrs Kelso, Brodick. Sunday bright  
with cold showers of snow. Climbed Nos  
Sully on Ben Nuis in very powdery drifted  
snow, then over Tarsuinn & A'chir & home  
by Glen Rosa.

R.A.B.  
J.M.



Goatfell  
↓



W.N. Nelmes

Cir Mhor from Castles.

Arran

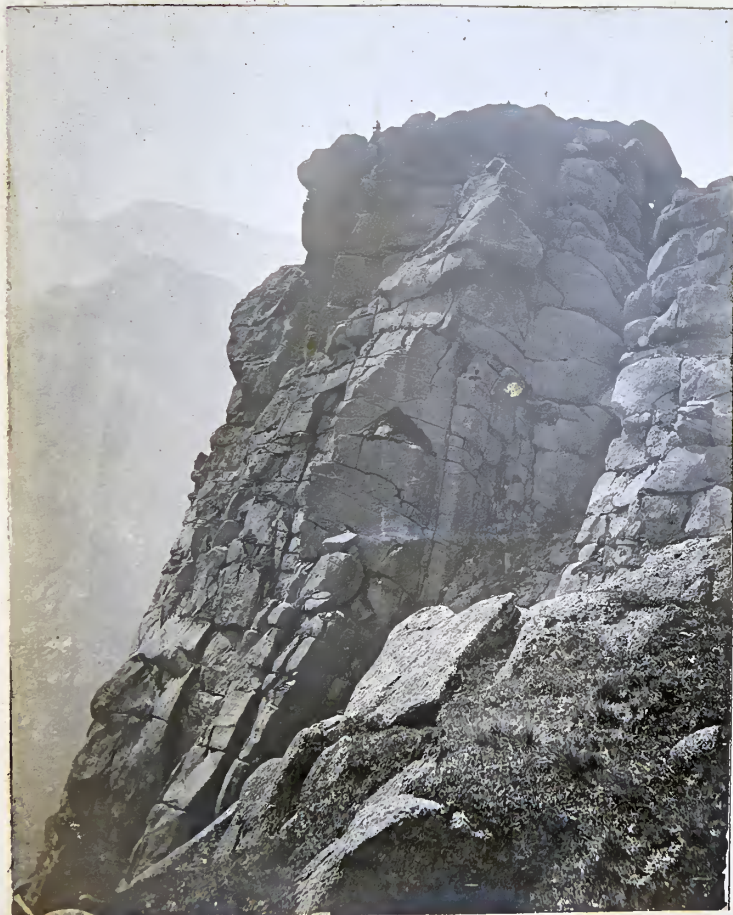
21<sup>st</sup> March 1908. From Mrs  
Kelso's, Brodick to Goatfell  
Sleasaid in to Coireban  
then back to Ridge along  
to Croch na h'Oighe & home  
by Corrie. Warm day but  
very hazy.

W.N. Nelmes  
J.M.

22<sup>nd</sup> March 1908. Up to Saddle  
then to top of Cir Mhor in  
mist & rain. Tried to  
find Bells Groove but  
snow thick & rocks iced  
so gave it up & came  
home by A'Chir & Coire  
Bhradain.

J. Cowan  
W.N.N.  
J.M.

J. Cowan  
↓



W.N. Nelmes

Rosa Pinnacle on  
Cir Mhor.



J.S. Napier.

A'Chir Ridge.

22<sup>nd</sup> Arran

5<sup>th</sup> April 1908. From Mrs Kelso, Brodick  
up to Saddle. Then traversed onto face  
of Cir Mhor & up by Cave Route & Bells  
Groove. Thence to Castles Willet's Steeple  
(difficult route) & home by Corrie. Very  
fine day, tho' cold. Saw Nevis from  
Castles.

J.C.  
J.M.





— At foot of Ben Lui Corrie —



← R.E.W.  
← S.Y.  
← J.M.  
← J.V.

— Summit of Ben Lui —



— Ben Cruachan —  
from Taynuilt Peak.

w.a.m. R.A.B. S.Y. J.F. R.E.W.



— At foot of Upper Couloir, Stob Ghadhar —

— EASTER MEET —

1908.

Tyndrum

(S.M.C.J. vol. X, p. 153-4)

18 April — Train to Taynuilt, then over Stob Dearg Cruachan, Drochaid Ghlas, Stob Damh & Stob Garbh to Loch Awe Hotel. (8:30am. — 4:15 PM.)  
Very fine day & good climb on S. Dearg. R.E.W.  
R.A.B.  
W.M.C.  
J. & S.Y.  
J.B. & R.A.  
J.M.

← 19<sup>th</sup> April — Drove & cycled to Inveroran, then up Stob Ghadhar by Upper Couloir. Stiff climb. R.E.W. W.A.M.  
J. & S.Y.  
R.A.B. J.M.

20<sup>th</sup> April — Up Ben Lui by Central Gully & down by Stob Garbh ridge. Easy day.

R.E.W.  
J. & S.Y.  
J.M.





Cir Mhor & Castles  
from Seafell.

Arran

10 May 1908. From Brodick to top of O'Chir  
then down into Coire Buidhe & home  
Misty and some rain

R. Carmichael  
J.M.

Cobblers

21<sup>st</sup> May 1908 - Left by 8.30 am. Train for  
Arrochar (with W.W.N.) and first to Corrie  
Sugach Cliffs. Tried unclimbed gully, then  
traversed out of MacLays gully & up big  
slab to Clarks Knife Edge & so to top. Next  
to Narnain. Up Spear Head down N.  
Crack. Up same again & down J.B.  
Chimney. Then up & down new "thro"  
route in J.B. Chimney. Cooled to Cobblers  
to W.W.N. & S.T. & Ss, but didn't go over!

R.E. Workman  
J.M.



Sgurr nan Sillean (3164)

S. Dubh na Daoine  
Tearlach  
Alasdair  
Sgumain

Sgurr Dearg



S.E.

South Coolins from B. na Glac Mor.

SKYE

Sat. 6<sup>th</sup> June to Sat. 13<sup>th</sup> June.

Very bad weather; rain,  
mists and high winds.

4<sup>th</sup> June - Afternoon cleared, climbed  
Eagle's Nest Chimney alone.  
Very short but other climbs  
might be found here. J.M.

8<sup>th</sup> June - Explored Glamaig burn  
gorge making some amusing  
traverses & catching 4 trout in  
isolated pool. Also "bouldered".

McMillington  
N.A.M.  
R.A. Thompson  
J.M.





S.C. Bannachdich & Greta from S. Dearg.

11<sup>th</sup> June - Left Inn at 2 AM and climbed S. nan G. by (snow) gully between 4<sup>th</sup> Pinnacle & Summit. Then down Tourist Route which affords quite good sport.  
R. Anderson & friend.  
J.M.

Sgurr nan Gilleann



S.C. S.W. and Central Peaks of B. Druim na Ramh.

9<sup>th</sup> June - Up Fionne Corrie to Tooth. Traversed by Naismith's Route, over An Basteir to Sgurr nan Gilleann. Climbed this by J.B. Chimney & down West Ridge. 1 hour from Gendarme chimney to Inn. Good day but cloudy.

H.A. Millington  
P.A. Thompson  
J.M.



F. Greig on J.B. in his Greta Chimney.



An Cairteal & B.D. na Ramh

12<sup>th</sup> June - Left Inn at 10 am. for Coire na Creiche. Up Tarnailar Corrie to Bealach na Glais Mor. Traversed 3 tops of Bidein & over An Cairteal to Bruach na Frith (3 P.M.) Up Sgurr a Fionne Corrie & down to Sligachan. Very bad day, heavy rain & sleet, with mists. From lower down could see Outer Isles.

J.M.



— Arran —

20<sup>th</sup> June — Early Steamer & bus to Corrie.  
Put up at Mrs Kelso's. Left at 3 P.M. for  
a'chir. Climbed new route (See Journal Vol. I, p. 111)  
Back to Corrie at 12 night. Glorious day.

21<sup>st</sup> June — Uh Glen Sannox spending 2 hours  
glussading down granite water-slides into pools.  
Tried A gully, Cir Mhor, & examined B.C. ribs.  
Another perfect day.

W.A.M.  
J.M.



— Corrie Harbour —



— "A" Gully, Cir Mhor. —



— Cloch na R'Olgha —

30 June — Evening walk up Meikle Bin from  
Milton of Cambsie, taking in two  
subsidiary cops. Splendid views —

W.W. Naismith  
J.M.

20 July 1908 — From Loch Awe up Sron an Icaan  
and along ridge to Ben Cruachan.  
Then over Tainuilt Peak to that  
place. Home by train.

J.A. Thomson  
a.D.T.  
J.M.



"Jean"

27<sup>th</sup> June 1908

Cobbler.

Cycled via Princes  
Pier & Craignavan  
to Arrochar, then  
uh N. Peak. Climbed  
down top pitch of  
L Gully & shoved  
over pile of stones.  
Very warm day;  
Rat 3 bathes.



Canish  
↓

Suilven  
↓

Cul mhor  
↓



Canish & Suilven (2399 ft.)  
from Lochinver



J.M.



Tent in Allta' Mhuillinn  
N.R. W.G.M.  
J.M. A.D.T.

Lochinver

20 Aug. 1908. Left shore at Culag at 10-15 and passing Glen Canish Lodge cut across river & moor for West face of Suilven. Found some difficulty in climbing first belt of sandstone direct to Ramsay's Gully. Thereafter quite simple. Took up latter part one of Lord Brownlow's stalkers, who was sent to see we didn't get into any danger. Home at 8; beautiful day & views.

J.I. Falconer  
J.M.  
A.M.

Fort William

Autumn Holiday, 1908.

26<sup>th</sup> Sept. Left Alexandra at 9am via path reached foot of Tower Ridge at 12-30. Pitched Tent, lunched, then climbed Tower Summit reached at 4-50 in 2hr 40 min. Down by arête. Misty & then heavy rain.

W.G.M.  
A.D.T.  
J.M.

27<sup>th</sup> Sept.  
N. Rassurn, D.S. Arthur & W.G.M. came up at 11-30. Climbed Observatory Ridge in two parties. Splendid rocks & day cleared up to glorious evening. Down by Gully to Tent.

N.R. J.M.  
W.G.M. D.S.A.

28<sup>th</sup> Sept. Met N.R. and D.S.A. at 9am. at foot of Castle. Then up new difficult route N.R. leading to left of S. Castle Gully. In gully at first, but after, up splendid narrow ridge crowned with difficult boulder. 3 1/2 hours in mist & rain. N.R. D.S.A. Down by Gully & then to F.W. J.M.



N.R. D.S.A.  
J.M. A.D.T.

Tent

Sat. evening to Monday  
after-noon, two people.

- 1 1/2 Loaves
- 2lb Sausages
- 1lb Ham (Wiltshire)
- 1lb Jam
- 3/4 lb Butter
- 1/4 lb Sugar
- Tea in Muslin
- Salt
- Nestlé's Milk, 3 tin.
- Cocoa
- Bovril.
- methy. Spirits.



Right Angle Gully.



North Peak of Coddler.

Arrochar

17<sup>th</sup> October 1908

From Glasgow by 8.5 am. train. Then up North Peak by MacLay's Crack & down by Right Angle Gully. Rocks very wet and cold, & foot hitch of latter climb & difficult.

R. E. W.  
W. G. M.

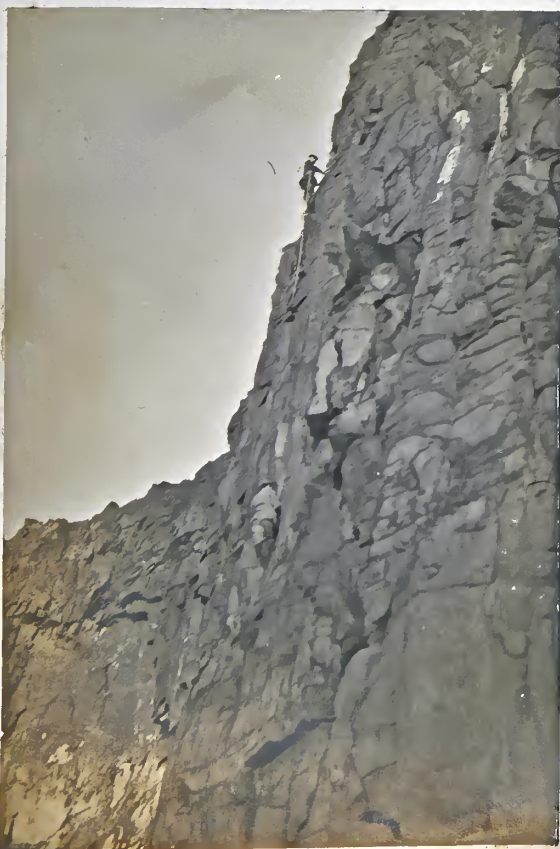
J. M.

140



"festina Lente"  
W. G. M. and R. E. W.  
at Arrochar Station

H.R. →



H.M. →

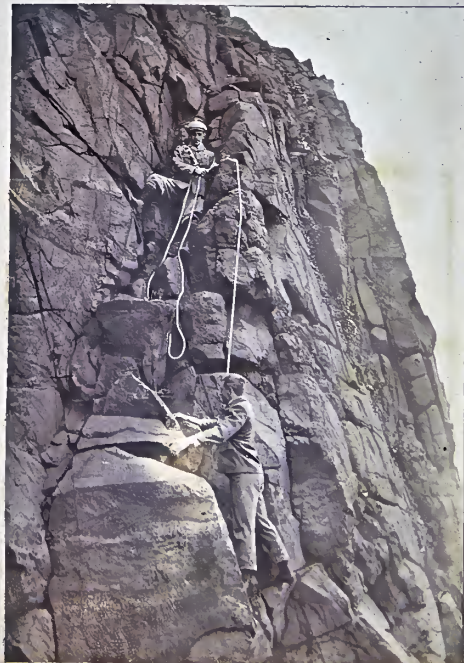
Salisbury Crags

"Annual Dinner" Meet  
5 Decr. 1908

Christmas Saturday  
26 Decr. 1908

Recess Route, down North  
Buttress, and Swiss Boys'  
Climb, all new.

← W.A.M.



←  
Swiss Boys' Climb

← Cat Nick Buttress →



Tennant. A.D. Smith  
 W.W. Naismith W. Nelson T.E. Goodve C.W. Walker  
 W. Douglas H. Raeburn W.N. Ling J.H. Bell



— On the Tarmachans —



— Killin - New Year 1909. —



— Craig na Callach Party —



J.M. →

← W.G.M.

— N.E. Corrie of Stobinian —



On Ben Lawers.

— NEW YEAR MEET —  
 1909.

S.M.C.J. Vol. X p. 258

Killin.

31<sup>st</sup> Decr 1908

6<sup>th</sup> Jan. 1909

Friday. 1<sup>st</sup> Jan. Over two lops of Tarmachans taken from N.E. by small snow gullies. Windy & dull  
 Sat. 2<sup>nd</sup> Jan. To Luid driving, then over Stobinian & Ben more to Crianlarich. Splendid fires & tea there. Home by train. Terrible rain all day  
 Sun. 3<sup>rd</sup> Jan. Climbed Craig na Callach Pulley. Very grassy & wet with little ice. Fair day.

H.R. W. Boyd  
 J.M. Q. Thomson



N. Walker W. Douglas H. Hill W. Inq's Clark.  
 Cumming W. M. Ling J. H. Bell J. Waugh  
 F. Greig S. Edwards W. Malcolm

Cumming Drummond F. Greig  
 A.E. Robertson W. Nelson



Group at Lawers Inn.  
 (E.R.B.)



Lochay Woods.

New Year 1909.

A.W.R. S.F.M.C. F.S.G.



"Stacking."

BLAIR ATHOLL

Sat. 20<sup>th</sup> March 1909.  
 From Blair at 7-10 am. up Glen Tilt  
 to Carnò Clamain (3159). Then back  
 to Glen up Ben y Ghloe (3671) from  
 North. Thereafter great rush in  
 mists to catch train. Gave up 5  
 miles from Blair & arrived 4.20  
 one hour late. Stayed till Sun.  
 afternoon train.

F.S. Poggis  
 A.W. Russell  
 S.F.M.C  
 H.M.



Lunch on Ben y Ghloe



Falls of Bruar





Ben More (3545)  
from Stob Garbh.



~ Lunch on Stob Garbh ~

~ Crianlarich ~

13 Feb. 1909.

From Glasgow by 5.50 am. train & had  
breakfast in Hotel. Then round to  
east side of Stob Garbh & up hard snow  
to summit. Great views from here  
all round, specially of Cruach Ardran.  
Along ridge & cut up latter. Views lost  
here in mist but very brilliant Brocken  
spectres. Down by north face & back  
to Hotel at 4 P.M.

S.J.  
a.s.  
H.M.



~ Cruach Ardran (3477)  
from Stob Garbh ~



Comò

Trident Buttress.



Lunch in Allt à Mhuillín.  
(Tower Ridge Party)

Coire na Ciste



Ben Nevis Observatory.

EASTER MEET-1909.  
Fort William.

10<sup>th</sup> April. Left Alexandra at 7.5 am.  
for Tower Ridge via Path. Roped at 10-45  
up west gully to Douglas Boulder.  
Snow hard at foot but softer higher.  
Some difficulty traversing snowfield  
at foot of Tower; avalanching daily.  
Up Recess Route, melting ice & snow in  
kols; to top difficult only from soft  
& treacherous snow. Over cornice at  
4.15 pm. Forgeous day & views.

T.E. Goodove  
R.E. Workman  
W.G.M.  
J. Young  
H.M.

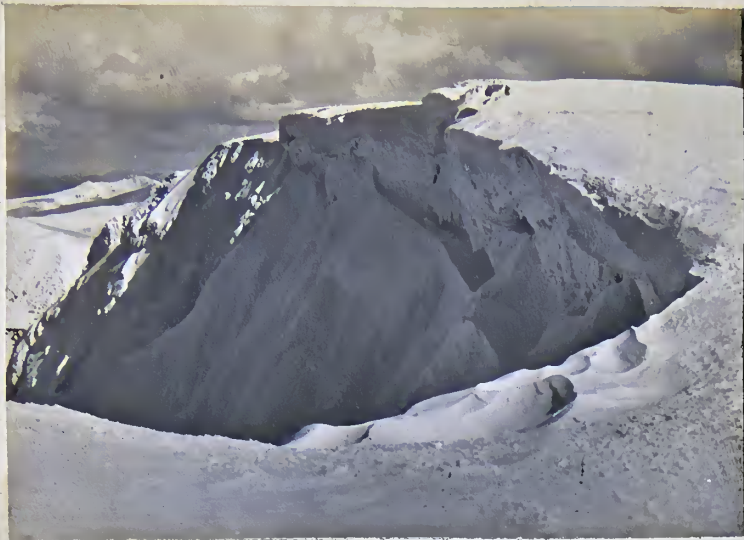
Schiehallion

Tower



North East Buttress &  
Tower Ridge.





Cornice at head of  
observatory Ridge Gully.



Garayloo Gully.  
Looking N.W.



Ben Nevis  
from Carn Dearg.

Photos. by  
W.N.N.



Head of Tower Ridge

11<sup>th</sup> April. Left at 10 am. & skirting Meall  
an Suidhe reached Lunning Stone via  
Banavie Path in 1 1/4 km. Mists & rain  
& little snow, but not cold. Up Castle  
Ridge passing two parties of 4 each.  
Glissaded down towards Lochan & back  
at Hotel at 4 P.M.

W. G. M.  
J. M.

Loch Eil.

12<sup>th</sup> April. Drove to head of Glen Nevis  
leaving at 6-30 with two other parties.  
meant to go over Fassains to Roy Bridge,  
but day so bad gave it up & climbed  
Sgor a Mhaim (3601) by Corrie & then  
back to Fort William. Heavy rain  
snow, & mist.

W. G. M.  
Aidan Th.  
A. Arthur  
J. M.



a'Chin

Castles

Cir Mhor

Seat of Fergus



Looking North from Chliabhain.

Arran



Sunset over Arran.

8<sup>th</sup> May 09. Morning steamer to Brodick.  
 Up Fardh Allt to Bealach an Fhìr Bogha  
 & back over Chliabhain, & boat home.  
 Good day though cold.

J.M.

30<sup>th</sup> May. Weekend at Miss McKenzie, Brodick.  
 Sunday up by Coire Bhraðain to a'Chin.  
 Made soup on top & basked for hour.  
 Then over Ridge to Cir Mhor col & down  
 to Glen Rosa. Tea & bathe; then slowly home  
 Very fine day.

P.C.

J.M.

4<sup>th</sup> July. Weekend at Sannox. Sunday  
 up Glen Sannox to Cir Mhor. Climbed  
 by Trah Dyke, Cave & Bell's Groove to Top  
 then home by Saddle.

R.E.W.

J. Craig

.Duckett

J.M.



Neaz of Coire Daingean



Arran Hills from Brodick Bay.

Arrochar

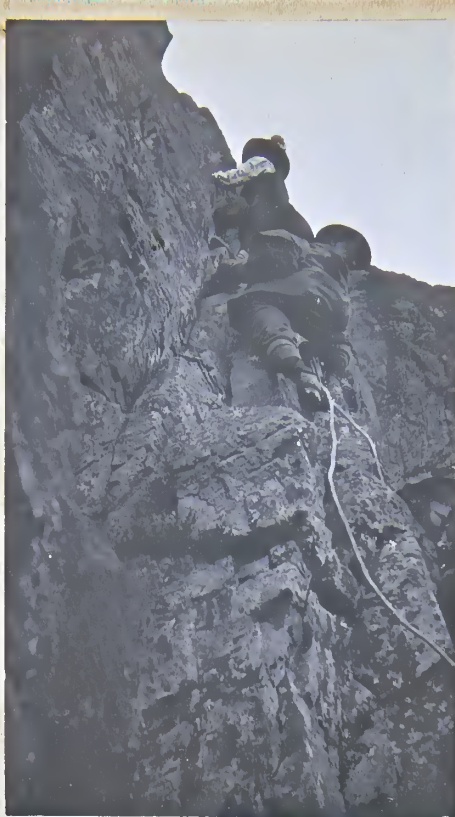
5 June 1909. Glasgow by 10-30 train. U.S.  
 Peak by route C. Down easy route then to  
 Summit by arête. Up N. Peak by Right Angle  
 Gully & home. Bright cold day. Allan Arthur

J.M.



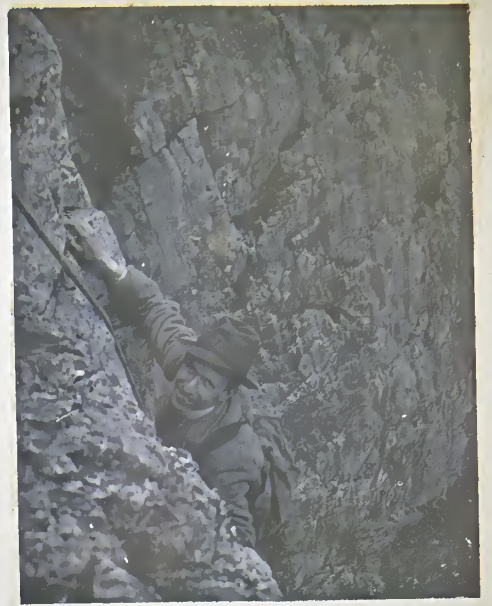


Buchaille Etive (3345)



Pitch below A's ledge

Miss Ranken



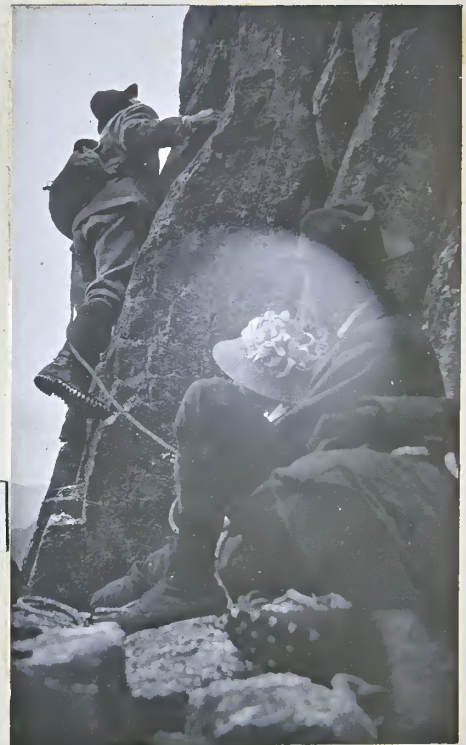
← A.R.

"Snapped" at finish of difficult pitch.



S. Cumming.

"Crowberry" party at Kingshouse Inn.



Posing on A's Traverse.



Party on summit of Buchaille

~ Buchaille Etive ~

11 July 1909.

Kingshouse Inn ~ mid-day train on Saturday to Bridge of Orchy then cycled to Kingshouse having tea at Inveroran. Trouble about rooms although engaged. Next day in glorious weather climbed Buchaille by Crowberry Ridge, (direct ascent) in two parties, ladies leading except at A's Traverse. Very fine climb indeed.

Miss A. Raeburn  
Ranken  
E. Ma. Smith  
A. R.  
N. M.

~ Photos by Miss Smith ~





~ Napes Arête. ~

~ Napes Needle ~

Great Sable (2980)





W.G.M. and W.N. Ling  
at Seathwaite



W.G.M. in Kern Knott's Chimney.



H.M. at the Keswick Convention



W.G.M. at Keswick

Lake District

17<sup>th</sup>-19<sup>th</sup> July 1909.

Seathwaite Farm.

17<sup>th</sup> To Carlisle on Friday night, then on to Keswick &c on Sat. morn. After lunch at Farm left at 2:30 for Stey Head Pass. Tried K.N. Crack. Gave up, then climbed K.N. Chimney. Then up Needle (in rudders) found top sensational & not too easy. To Great Gable by Rakes Grête. in mist & home at 8 P.M. Ring arrived.

18<sup>th</sup> To Scafell Pike leaving at 10-15. Great views after wet morning. Then by Micklemore & Rakes Progress to Steep Ghyll & up Pinnacle by Slingsby's Chimney. Fine climb (45 minutes) Bagged top then home at 4-30.

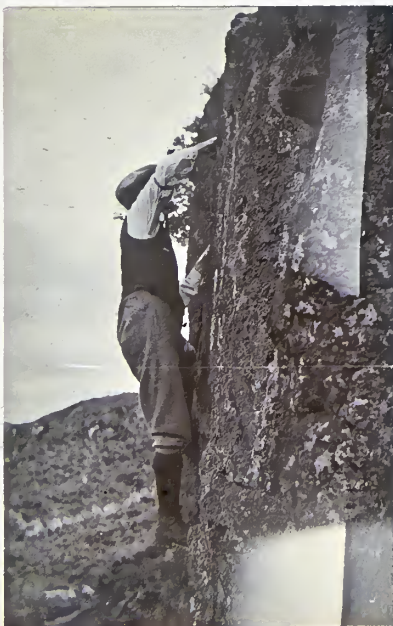
W.N. Ring.  
W.G.M.  
J.M.

Kilmacolm Buttress 26 June 1909.

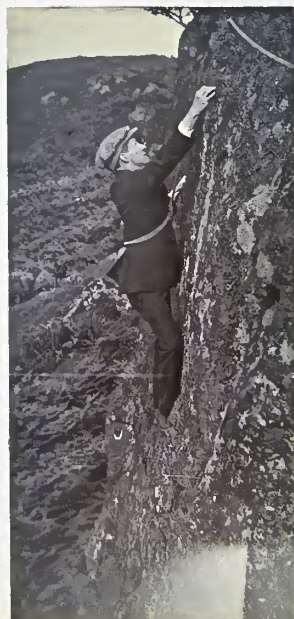
First recorded ascent made on this date by unrecorded after four furious failures! 24<sup>th</sup> July 1909.

First descent made by J.M. in 15 seconds.

J.C.T.  
J.M.



J.M. on Buttress.



P.C. on Buttress.





~ Sun-rise on Ben Nevis ~  
from Corpach.

SKYE  
August 1909

Sunday 8<sup>th</sup>

Bhasteir Tooth traversed,  
up Shadboll's Chimney &  
down Naismith's Route,  
former extraordinary  
climb; only difficult pitch is  
cave pitch. Good day.

C. Deards  
S.F.M.C.  
H.M.

Monday 9<sup>th</sup>

To Glen Brittle in rain by  
Bà Mhaim. Fished all  
morning; got 2 whittling 1 1/2 lbs.



~ At Lochan Bhasteir ~



~ Sgurr nan Gillean ~  
from Sligachan.

Tuesday 10<sup>th</sup>

Window Tower Buttress to  
An-t-Sron of Dearg. Mists  
drove us home again.

Wednesday } RAINED

Thursday }

Meals got mixed  
Breakfast 2 P.M.  
Dinner 10 P.M.  
Coffee 1 A.M.

Played P Whistle  
& Chess.

Worked. Shooting flies &  
Darned Trousers &c.

W.A.M.  
C.D.  
S.F.M.C.  
H.M.

An Caisteil

Bideins

Mhadaith



~ Coire na Creiche ~  
from Bealach à Mhaim

Friday 13<sup>th</sup> Beautiful  
morning. To Cairn Laggan  
& up N.W. climb on Sgurr  
Alasdair. Very fine.  
Mists on top again.  
Down over Sgurrain &  
Cioch. Wonderful place.

Saturday 14<sup>th</sup> Returned  
to Sligachan in most  
torrential rain & so  
again to fishing.  
Macalister arrived.

Sunday 15<sup>th</sup>  
Stacked in Glen  
Sligachan.

C.D.  
H.M.



Mhic Coinnich Alasdair  
 Dush Mhor ↓ Dush na Daisein Each Sgumain  
 ↓ ↓ ↓  
 Tearlach



→ South Coolins from Sgurr Dearg. →

Monday 16<sup>th</sup> Left at 10-45  
 with packs for G.B. Day  
 clearing up decided to  
 go over Tops. Forced way  
 up face of Castles (3-15)  
 mist & rain again. Then  
 over Bideins, Vadec, Greba  
 & Bannach dich to Col 8-30.  
 Down to Glen Brittle  
 with difficulty at 9-50.

W.G.M.  
 H.M.

Tuesday 17<sup>th</sup>. Left at 1-20 P.M. for  
 Dearg, (W.A.M. & W.G.M. going via  
 Window Tower) Tried S.W. Crack;  
 fanked it as too risky. Up short side  
 in rubbers (easy) S.F.M.C. gave lesson  
 on descent of it. Other two up long  
 short & down long side. Raced home  
 in 46 minutes.

Gorgeous day with exceptional  
 clearness. Saw St Kilda and  
 outlying islands clearly defined  
 in a sea of gold at 8-15 P.M.

W.A.M.  
 W.G.M.  
 S.F.M.C.  
 H.M.



J.M.

← S.F.M.C.

"The Inaccessible."  
 → In sight of St. Kilda →



S.F.M.C. →

Ajax defying the lightning.

Bannach dich Greba. Mhadaith Bruach na Free Am Basteir Sn. Gilleann  
 Bideins

Wednesday 18<sup>th</sup>

Bathed & Basked.  
 Managed to draw chess-  
 game with S.F.M.C.

Thursday 19<sup>th</sup>

Packed up; paid up;  
 & said farewell to  
 Ewen & Mary. Then  
 to Sligachan in wind  
 hail and rain.



North Coolins from Sgurr Dearg

Friday 20<sup>th</sup>

Slacked morning. W.A.M. to  
 Portree with ladies (in motor)  
 W.G.M. & S.F.M.C. traversed  
 Glamaig etc. N.M. fished in  
 afternoon; caught 2, 26 Sea  
 Trout & lost salmon (!)





Clack Ghlas from North



Summit Slabs of Clack Ghlas

Saturday 21<sup>st</sup> left at 10.30 and  
 traversed Clack Ghlas and  
 Blaven in sun, rain & finally  
 mists. Back at 8 P.M. very good  
 going.

T. Marshall  
 P. Marshall  
 W.S.M.  
 H.M.



Sunset on Ardgour  
 from slopes of Nevis.

Sunday 22<sup>nd</sup> Bhaskein Tooth again in  
 mist & some rain. Bad hitch  
 wet & very difficult. Down  
 by Nick Gully (Kings) & home.

H. Alexander  
 J.M.  
 F.M.  
 W.S.M.  
 J.M.

Fort William.

Sunday 29 August 1909. Ben Nevis  
 by the bath in mists. Tea in  
 summit hotel. Good views on  
 way down.

Greta M.  
 Jack M.  
 Herr Hoffmann  
 J.M.



Cir Mhor  
 from Castles



A'Chir Ridge  
 mists clearing



Cloch



← Cloch & Slab

S.F.M.C.

Sron na Ciche showing  
Collie's Cloch

Mickoinich



Alasdair



Sgumain



S.F.M.C.

Matterhorn Boulder  
Corrie Ladain.



Lunch on Castles

Arran.

Sat. 25 Sept. 1909. — From Brodick up Glen  
Rosa to Coire Daingean where several  
cracks & chimneys climbed. Tried dig  
one on Tarsuinn spur but gave it up.

Sunday 26<sup>th</sup> Sept. — Up Coire Bradain to a<sup>W.G.M.</sup>chir  
Ridge. Then past Cir Mhor to Castles &  
down over Witch's Steep to Corrie. Drove  
home.

W. Malcolm  
P.C.  
W.G.M.  
M.M.





Group at Hotel.



Miss R.

Cobblers from upper glen.



Miss R.

N.R. on Spear Head



Geo. Seabree  
Mrs I.C.

Accident to our Train at  
Glen Douglas crossing on  
Monday morning.

## Arrochar

### "Annual Dinner" Meet

Saturday:- 4<sup>th</sup> Decr. 1909.

From Glasgow by 8-5 am. train, then up North  
Peak of Cobblers by Great Gully. Badly iced and  
full of soft snow. A very fine day tho' cold.

Miss E. Raeburn  
Miss R. Raeburn  
N. Raeburn  
Geo. Seabree  
J.M.

Sunday:- 5<sup>th</sup> Decr. 1909

To Sugaich Corrie by way of the Caves which  
we explored; then direct up to Shear Head  
Aire of Rannair over deep snow. Climbed  
Aire in two parties difficult with ice &  
snow. Wonderful panorama & sunset over  
the wintry Bens and Glens. Unusually fine  
colours. Back by Sour Milk Burn.

Mrs Inglis Clark  
Miss R.R.  
N. R.  
E. S.  
J.M.





Raeburn in Narnain Caves.



Group at Tyndrum.

NEW YEAR MEET. 1910. (S.M.C.J. Vol. XI p. 35)

Tyndrum.

Sat. 1st Jan. 1910. - Train to Bidge of Orchy & drove to Inveroran. Thence to Stob Shadhar in heavy rain by couloir on N.E. face. Dry things from men at I., tea then back to T.

J.C.T.  
G.H.E.  
F.G.  
W.G.M.  
S.F.M.C.  
J.M.

Sunday - In drenching rain to top of of Ben Doran. Wild rush down.

G. Sang  
A.W.R.  
R.A.B.  
W. Galbraith  
J.M.

Monday - In similar weather only more so to top of Ben Lui by Foxes Couloir.

J. Young  
A.K. Reid  
~~R.A.B.~~  
J.M.



At Royal Hotel



In Lui Corrie.

TYNDRUM.

Sunday, 12th Feb. 1910. - Motored up on Sat. afternoon & left this day at 8 a.m. for Ben Lui. Dull day but no rain. Up Central Gully & over Cornice in dense mist. Down Stob Garve Ridge then glissaded into Corrie & home by car that night.

W. Watson  
R. "  
J. "  
R.E.W.  
J.M.





View south from Achallader (3404 ft.)

Bridge of Orchy.

Saturday, 5<sup>th</sup> March 1910. — Annual expedition of the three. Early train to B. of O. then along Railway & round into Achachallader Corrie. Up couloir then ridge, quite exciting to top & back to Station over top of Ben Dothaidh. Tremendous cornices on latter. Very good day altho' cold.

A.S.  
S.J.  
N.M.



Ben Achallader.



Across Moor of Rannoch





A.K. Reid.

S.M.C. at Kingshouse  
Easter 1910.

EASTER MEET. 1910.

S.M.C.J. vol. XI p. 109.

Saturday, 26<sup>th</sup> March 1910. — Motored to  
Clackaig then up Stob Coire nam Beith &  
along Ridge to Bidein nam Bian (3764)  
Dense mists on top. Good Glissade of 1600 ft  
back into Corrie & after tea at Clackaig  
Some picking up two parties en route.

R. Watson  
J. "  
E. Buchanan  
R.A.B.  
N.M.



at Clackaig Inn. —



J. Young.

Kingshouse Inn & Sron Creise. —





J.Y.

— Early Morning(!) at Kingshouse. —

Easter Meet 1910.



D.W.R.

Kings house & Buchaille Etive (3345)





A.K.R.

Kingshouse 4  
Sron Creise

Easter Meet 1910.



S.F.M.C.

Loch Tulla 4  
Ben Starav Group.





J.K.

— A wet morning —

Easter Meet 1910.



— Still wet. —



J.H.B.

— In Glen Etive —

Sunday, 27<sup>th</sup> March 1910

Very wet morning. S.M.C. having been invited to lunch by Mrs Stewart of Dalness a party of 5 walked down Glen Etive & arrived in a soaking condition. Had good lunch & inspected curios. Cleared up & had glorious walk home.

J. Gall Inglis  
 J. Buchanan  
 E. "  
 R.A.B.  
 J.M.



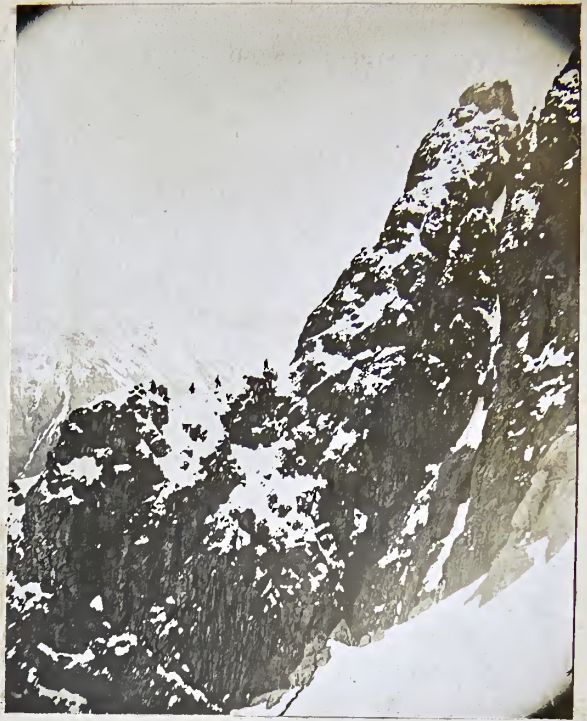
J.M. R.A.B.



← J.M.

← R.A.B.

Foot of Crowberry Ridge



Point reached →

Crowberry Tower from west.

Photos by J.M.B.

Easter Meet 1910.



Crowberry Tower from East



Bens Cruachan & Starav from Buchaille Etive

Monday, 28<sup>th</sup> March 1910 — Beautiful morning hard frost after heavy rain on Sunday. Started off for Crowberry Ridge at 7 a.m. with little hope of success. Roped at 9.30 on rocks. Left A's ledge at 10.45 & tried to force a way up on right of Ridge but owing to icy conditions could not regain crest of Ridge & were finally hounded below foot of Tower. Regained A's ledge at 5 p.m. & took off rope at 6.30 after an exciting not to say hard day. Left Inn at 8 p.m. in motor & had marvellous display of Aurora Borealis crossing Moor of Rannoch. Home about 1 a.m.

R.A.B.  
J.M.





*Sron Creise — Kingshouse — Buchaille Etive*

*28 Mch. 1910.*

*Easter Meet. 1910.*



*J.K.*

*— Glen Etive —*

*Buchailles Mor & Beag.*





Ben Fhada.



In Glencoe.

Glencoe.

21<sup>st</sup>-22<sup>nd</sup> May 1910.



On Buchaille Etive.



J.H.B.

Buchaille Etive  
from Bridge





↳ Crowberry Ridge  
from Curved Ridge. ↳



↳ Glencoe. ↳

Saturday. 21<sup>st</sup> May 1910.

12 o'clock train to Trndrum & thence cycled to  
Kingshouse to meet Watsons who had motored  
there on Friday.



↳ J. Watson in Glencoe.  
"up the Struay." ↳



↳ J.W. on Buchaille Etive ↳





N.M. and J.W. on  
Sgor nam Fiannaidh (3165)



N.M.

Sunday, 22<sup>nd</sup> May 1910. Motor to Achatriochlan Farm then  
up S.n. Fiannaidh & along Aonach Eagach Ridge in  
mist and heat. Then down gully back to farm & home  
same night.

R.W.  
J.W.  
J.M.



J.M. & J.W. in  
Gully on Aonach  
Eagach



R.W. and J.W. on  
Aonach Eagach.





— J.C.T. and N.M. —  
on North Peak.



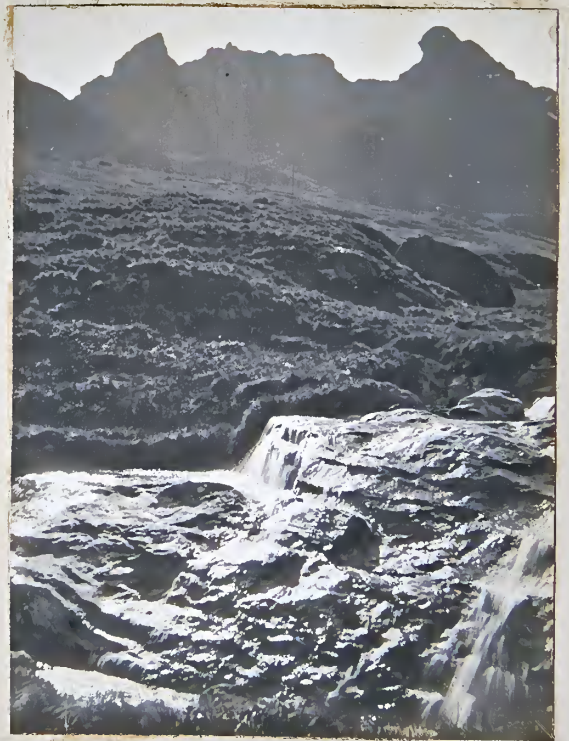
— J.C.T. and Fleming. —

Arrochar, 2<sup>nd</sup> June 1910. — By 7-13 train & up  
Jean by arête, then over Summit by arête & up  
N. Peak by Right Angle Gully & down Great Gully  
Very fine day & pretty views.

J.C.T.  
Fleming  
J.M.



— "Jean" from North Peak. —



— The Coddler. —





← Cobble → North Peak.



← Central Peak. →

Atrochar 18<sup>th</sup> June 1910. ← Left Houston at  
8-15 am. in Motor and reached J. at 10 am. Then  
up N. Peak & R. Angle Gully over Summit &  
up Jean by Route C. Good Day.

W. Watson.  
R. " "  
J.M.



Route C. on Jean

← J.M.

← R.W.



← Cobble →





Swimming the Channel



The Rescue

Sunday 18<sup>th</sup> June 1910. — Into Corrie Sugach & first three up slab & Clark's Arête. Other two Eric & Maclays Gully necessitating a rescue party from top! Thereafter to Narnain & up & down Arête & Cracks; very amusing day.

W. Watson  
W.G.M.  
H.M.  
R. Watson  
J.M.



The Rescue Party as viewed by Rescued.



← J.M.

← R.W.

The Narnain Crack.



