

Daisy Canon MacLeod  
Dr Ranking Drummond Fish



Mrs Ranking M Fraser Sligachan Hotel M Falloway  
M Falloway S Greenough M Fraser



The Cuillin from Tallisker

29 Aug. Left at 10-20 for Bhaisteir Corrie.  
Had lunch near Lochan & then to Col  
& up Am Basteir. Met amusing man  
on Col with hot hat & umbrella. Took him  
up on rope. Top 3-45, very good day & view  
Home at 6-30.

Daisy  
Jm.

### Skye. August 1921.

4<sup>th</sup> Sept. Left at 10 am. in strong gale for Tourist  
route up Sg. nan Gillean. Misty & cold with  
desperate wind on summit ridge. Reached  
top at 3-30 p.m. & home same way at 7-15.

Daisy  
Jm.



Third Pinnacle



Sgurr nan Gillean.

8<sup>th</sup> Sept. To Sg. nan Gillean by West Ridge & down by the  
Pinnacles. Very good day.

Stanley Greenough  
Jm.

New Year Meet 1922

Brodick, Sat. 31<sup>st</sup> Decr. 1921 Up Glen Rosa  
to Cur Mhor Col & back over A'Chir in  
some snow & ice. Then home over  
Tarsuin and Nuis. A fair day but  
misty.

W.N.L.	Clapperton
S.J.	McLean
C.E.B.	Rutherford
J.H.B.	J.M.

Sunday 1<sup>st</sup> Jan 1922. In dreadful conditions by  
motor to Sannox & up the Glen. Soaked to  
skin in  $\frac{1}{2}$  hour but up Cloch na h'Orighe other  
parties tailing on behind. Along ridge to  
Mullach Buidhe & down into Coire Lan. First  
halt for food under east shoulder of Goat-fell  
& so home about 3 p.m.

W.N.L.
S.J.
C.E.B.
J.M.

Monday. Home, feeling rotten.



Cloch na h'Orighe & Sannox



D<sup>r</sup> Lüscher at Gildbach.  
to H. in deep new snow. Home easily  
in one hour, skiing all the way.

D<sup>r</sup> Taylor Young  
W.N.Ling



Kuenigsbergli  
from Hotel.



Elsighorn  
from Hotel.



Instructor.

Skating Rink  
Bonderspitz



on way to Hahnenmoos.

Azeldöden

4<sup>th</sup> Feby — 21<sup>st</sup> Feby 1922.

Three times to Hahnenmoos  
and once to Elsiehorn.  
Very fine weather till  
last weeking which D<sup>r</sup>L.  
spent with us.

Home via Bale 10 p.m. to  
Paris 6-30 am. Left 12 noon  
+ London 7 p.m.

Daisy  
D.L.B.  
W.N.L.  
Jim.



W.N.L. and D.L.B. Lunch  
Bonderalp



T.Y. and D.L.B.  
on K-gli.



Bonderalp  
In very icy snow which should  
run down.



at Hahnenmoos.  
Looking across Lenk towards Trütlisberg  
Pass to Gstaad.



Dr. Lüscher.

Dorothy

W.N. Ling

Major Sandeman.



Lunch at Hahnenmoos  
With Major Sandeman. Returned by Kumi Valley  
I had very fine run.



Kumi Valley Route

Elsighorn. A good day but bad light  
owing to slight haze. Kept too high  
I had to get thro' cornice & descend  
400 ft to Elsigentalp. Left 8:30 took  
at 2 km. Home 5:30 km.

W.N.L.  
J.M.



Grand Löhner  
from Hotel



D.L.B and W.N.L.



Wildstrubel  
from Hahnenmoos.  
with Major S. & returned by Secret Valley.

J.M.

Allan Arthur.



Easter Meet  
1922  
Aviemore

Pinnacle →  
Ridge

On Braeriach.

15<sup>th</sup> April 1922, Sat. a dull day with mist low on all the Hills. Drove to Glenmore Lodge then up Cairngorm<sup>(4084)</sup> along whole ridge in dense mist over An t'Sneachda, & Cairn Lochan (3953) to Craig an Leth-choin (3448) Then down to Larig Path & home. Met Smith the Stalker who climbed Suilven with me in 1908.

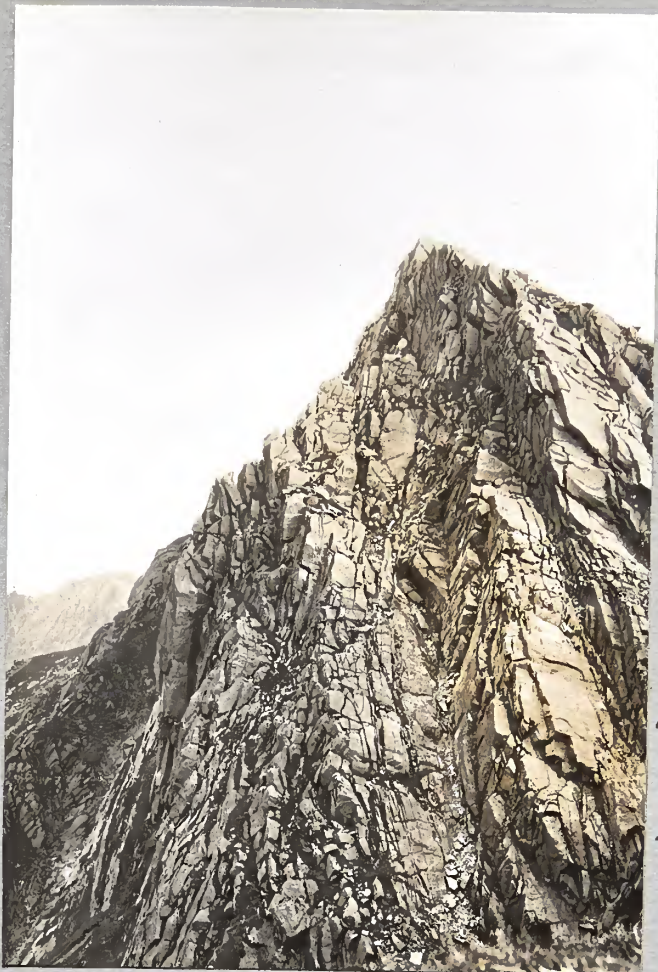
W.N.L. Prof McIndyre  
F.S. C.E.B  
S.J. J.M.



Rosa Pinnacle

16<sup>th</sup> April. Motored with ski to Lower Bochy. Then up to Braeriach by south of Lochan Coire an L. Here in dense mist a cornice broke off under our ski points & later a.a. dropped thro' it 60'. Came down N. to Bochy good runs lower down then up Sgoran Dubh & down all a Mharcaidh & home by Loch an E. A glorious day latterly & fine views from Sg D.

Allan A.  
J.M.



Usher Crags of Cìr Mhor

Arran Brozick

Sunday 18<sup>th</sup> June 1922 —  
Motored to Sannox & up into Punch bowl to examine rockfall. Tried one of the Ledges but too loose & wet. Then to head & over Mullach Buie to Saddle looking for Benson's Pinnacle. Raining now & so down Glen to Corrie & tea with Peter who motored us home.

W.N.L.  
J.M.

19<sup>th</sup> June

Up Glen Rosa to Cìr Mhor in beautiful weather. Along ridge past Rosa Pinnacle for photos. Some time on top then to Castles for photos of Cìr Mhor. Home behind C.M. & picnic at foot of Glen.

W.N.L.  
J.M.



South from Mullach Buidhe



Glen Sannox.

24<sup>th</sup> June 1922. Left Brodick at 11.30 p.m. for Sannox on beautiful evening. Going slowly passed up Glen at 1 a.m. Rested in sandkit with ground sheet for 1½ hrs & started about 3 a.m. past Old Mine. Made breakfast at 4-5 & watched brilliant red glow on Cir Mhor. Then took series of photos of face right up to below Castles, at 6.30. Left for home via Saddle & in for second breakfast at 9.10 a.m. J.M.



Sunrise on Cir Mhor.

11<sup>th</sup> June 1922. From Brodick up Glen Rosa & slanted up into Coire Dearg under Goatfell taking photos. All spoiled more or less by light. Explored all rocks & ridges for Benson's mysterious pinnacle. Then home over Goatfell in fine weather. J.M.



Cloch na h'Oighe



on Sulvaín (3224)

Fort William.

Sat. 12<sup>th</sup> Augt 1922. Motored to Fassfern then up Glen Suileag & across to Glen Fionnlighe, a descent of 500ft. Had lunch there then up Sulvaín. Weather bright with heavy rain - storms all round. Both tops & down home by Glen Suileag Cottage & walked to Corrach Drinks & motor home (Station Hotel)

S.J. Tomkinson  
R.A.B. J.M. Ling

Mrs Bell  
J.H.B.  
R.A.B.  
J.M.  
J.M.



on N. face of Cruach Ardran



Lunch in Glen Fionnlighe

13<sup>th</sup> Augt. Motored to head of Glen Nevis, then thro' Gorge to Steall. Mrs B. home from here. Rest up all Gaidhas to col & by ridge in rain & mist to Carn Mor Dearg. Home down ridge, to Glen & round Meall an t'Suic.

J.H.B.  
R.A.B.  
J.M.  
J.M.



Lunch on S. face of Cruach Ardran

22<sup>nd</sup> Aug 1922.

Across Ben More Coigach (at Achilidhuic) range to fish. a.m. J.M.

Tomkinson Chas. Bell. J.M.

23<sup>rd</sup> Sept 1922 Tour of Ben Nevis from Corroul to Shean Bridge. To Fort William old road. Third day motored to head of Glen N. then thro' to Corroul.

M.G. Taylor J.M.

25<sup>th</sup> Oct. 1922. Motored to Ross's Hotel in 55 mins from Kirklea. Then traversed Coddler in glorious weather. To Ben lme & back for tea at Hotel. Motored home & train to K.

Chas. Bell. S.J. J.M.



On Cruach Ardran

NEW YEAR MEET. 1923.

Crianlarich.

Sat. 31<sup>st</sup> Dec. To Cruach Ardran by N. face in very fine conditions. Large party on hill. Difficult conditions coming off west end owing to ice. Home along ridge with fine views.

Tomkinson  
G.S.  
W.M.L.  
C.E.B.  
R.A.B.  
S.J.  
J.M.

Sat. 30<sup>th</sup> Decr. To Ben More by farm. Snow very hard & keen wind with mist. Stobhan ridge very icy & steps had to be cut. Cleared a little on latter. Enjoyable day.

R.A.B.  
S.J.  
C.E.B.  
J.M.  
J.M.

Monday 1<sup>st</sup> Jan. Along whole Ridge to An Caisteal in fine sun & mist effects. Then across to Ben a Chabhair & down to Ardlui. Tea at Hotel & frantic rush for train.

H. Alexander  
R.A.B.  
S.J.  
J.M.



Buttresses of Cairn Mhic Fhearchair



on Liathach

Easter Meet 1923.

Kinlochewe.

30<sup>th</sup> March to 3<sup>rd</sup> April.



Mounsey Glover Walker Bell Rennie Fleming  
Stuart



Kinlochewe Hotel



1<sup>st</sup> April - In bad  
weather to Loch Fhada  
by Gleann Blán'assail &  
back by Abhainn Bruachóg  
J.N. Bell  
Glover  
Jm.



Arnold B. Stuart J. Willie L.  
on Creag Dubh (3000)

Ben Eighe. 31<sup>st</sup> March 1923.  
Motored to Bridge of Grudie & up  
Glen by fair track to Coire Mhic  
Fhearchair. This Coire looked its  
very best & justified its claim.  
Across below cliffs & up Sail Mhor  
(3217) Then in delightful weather  
along whole ridge over Coinneach  
Mhor (3120) Spidean Coire nan Clach  
(3220) Sgurr Ban (3188) Sgurr an  
Fhir Duidhe (3160) & over the Black  
Men to Creag Dubh (3000). There is  
a little scrambling on  
west ridge of Coinneach.  
W.N.L.  
S.J.  
R.A.B.  
Jm.

Lochan Coire Mhic Fhearchair

Spidean Sgurr Sgurr an Fhir  
↓ Ban ↓ Duidhe



Ben Eighe  
from Liagach



Mullach an Rathain (3358)



Spidean a Choire Leith (3456)



Am Faserinen (3050)



J.H. Bell.



Faserinen Pinnacles

Liathach 2<sup>nd</sup> April.

Motored 7 miles down Torrison Rd  
& then straight to top of of  
Spidean a Choire Leith, Then over  
Am Faserinen to Mullach an  
Rathain, all in perfect weather.  
Down west slopes & after bathe  
with Arnold to Torrison Lodge  
where excellent tea with Keeper

G. Solly  
Bell  
Ling  
Mounsey  
Barlow  
S.J.  
R.A.B.  
J.M.

3<sup>rd</sup> April - Walked to Achnasheen &  
midday train home.

W.N.L.  
S.J.  
J.M.



The Arran Peaks from Alma House.



Witches Steep from  
Cur Mhor.

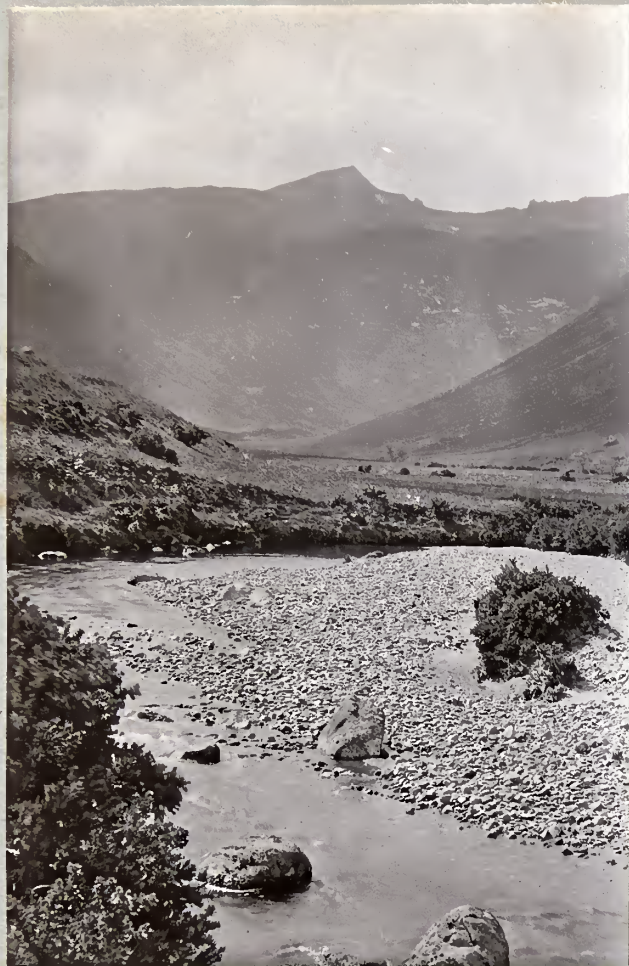


Cur Mhor  
from Castles

Arran - June 1923.  
 Motored to Sannox where R.A.B.  
 not available. So across Moor  
 & up Fergu's Seat & along ridge  
 to Castles in beautiful weather  
 & good photos. Over Cur Mhor &  
 home by Glen Rosa for bath in  
 Sea.  
 W.N.L.  
 H.M.



Cur Mhor  
from Castles.



Ben Nevis & Glen Rosa.



Frances (age 6) & W.N.L.

June 1923.

From Brodick-Corrie Road up edge of sandstone rocks of Maoldown to Summit. F.M.M. enjoyed the rocks & saw a fox in the corrie. Down to road where we had a picnic.

F.M.M.  
W.N.L.  
H.M.



Frances on  
Maoldown

July 1923. Motored to road just below Schiehallion (3547) & climbed it very easily for a fine view. Then down for tea at car & motored to Blair for night.

Up Glen Tilt in car to below Forest Lodge then in poor weather to Braigh Coire Chruinn-Bhulgain (3505) then to Col to main top of Beinn 'a Ghalo but not up owing to cold & mist. Down glen to N.E. & round into Tilt. Saw very large red fox. Tea at Forrest Lodge with Comdr. & Mrs Harrison-Wallace. Then to Nethy.

By car to Redhoan. Up Synack More (3574) in light mists & some rain. Very wonderful effects.  
C.E. Bell, Ian Jack  
S.J. Murray Bell  
H.M.



Summit of Witches Steep.

J.H. Bell

D. Clankerton

Green Lawson

Sang



NEW YEAR MEET

1924

Blair Atholl.

30<sup>th</sup> Dec 1923 Sunday

Carn Liath in  
dull cold weather  
from Shinagag

S.J.  
S.H.B.  
G.S.  
J.M.

31<sup>st</sup> Dec.

Ben Vrackie from  
Pitlochry & down  
N. slopes.

W.N.L.  
G.S.  
J.M.



1<sup>st</sup> Jan 1924

Ben Dearg (3304)  
a long tramp 8 miles  
N. by W. of Blair across  
moor. Track very  
bad with ice & moor  
easier going.

W.N.L.  
G.S.  
S.J.  
H.M.

August 1923 Night train to Taynult (3:30am) Then back along  
road to Cruachan. Made breakfast ham & eggs on road side  
about 4:30 to 5:30 then up Stob Dearg (3611) in mist. Cleared  
on top & very fine thereafter. Spent hour on main top (3689)  
& ate grape fruit & so slowly along over Drochar & Shlas (3312)  
Stob Diamh (3272) Stob Gardh (3215) & out along ridge & down to  
old railway to Loch Awe for tea & afternoon train home.  
Discussed Jamaica business!

J.M.  
H.M.

W.N.L. and Stuart enroute

P. Donald Clankerton for Ben Dearg  
W.N.L.ing Hon. H. Priestman



H.M. crossing  
by old bridge



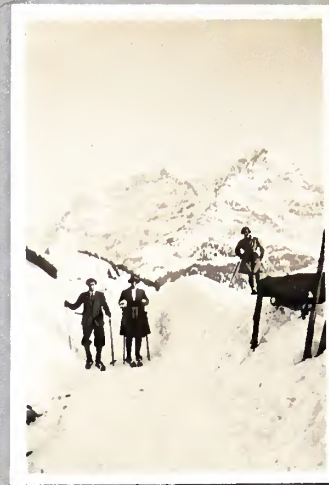
Morrison Group at Hotel  
Bell Jack  
Inglis Clark & Thomson

Adelboden February 1924

With Walkers,  
Nora Cox  
Margaret Walker  
D. Ogilvie  
Margaret Reed



at Gilbach



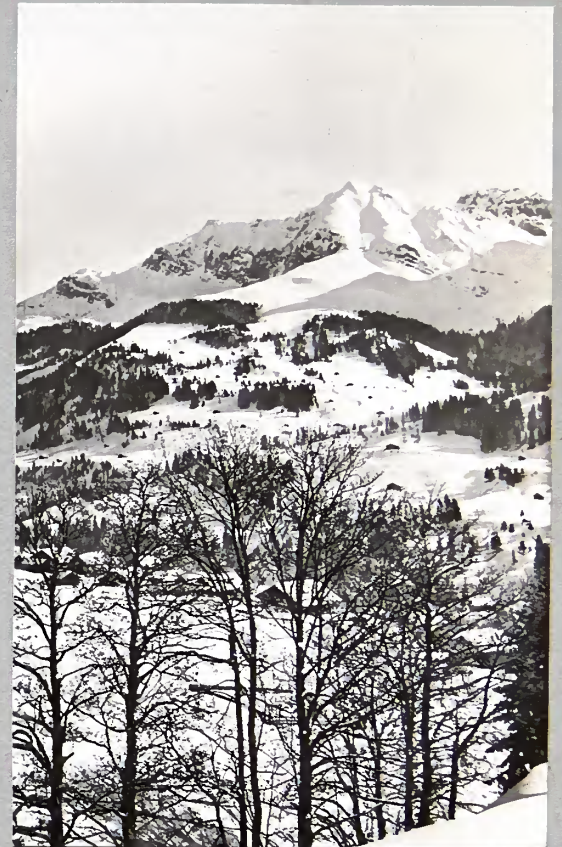
Gilbach Path.



Wildhorn & Lenk Valley  
from Hahnenmoos



Margaret Walker



Banderspitz  
from Hotel



Ogilvie  
M.W. H.M.



H.M.



*at Elsigentalp.*



*Below Elsigentalp.*



*Elsighorn.*



*M<sup>rs</sup> W.  
M. W.*

*An "Open Christy"*



*Nora Cox.*



H.M. J.H.B. S.J.  
at Fife Arms.

Crianlarich

8 March Friday night to C. Left 9 am. on Sat  
for Ben a Chroin (3104) 12-45 in dense mist  
Then along ridge & steep descent to col.  
Home over An Caisteal (2-30) to C. at 4-30  
(3265)

C.E.B.  
S.J.  
H.M.

Easter Meet 1924

Braemar

18 April. Stayed at Melgale with C.W.W.  
& left by car in morning for Glen  
Doll. Left car at 11 am & carrying  
ski up track to 1500'. Then on ski  
over Tom Buidhe, Cairn na Glasha  
& Carn Tuirc to Loch Callaber 4-45.  
Very bad snow, but good run-up.  
C.W.W.  
H.M.  
11 am

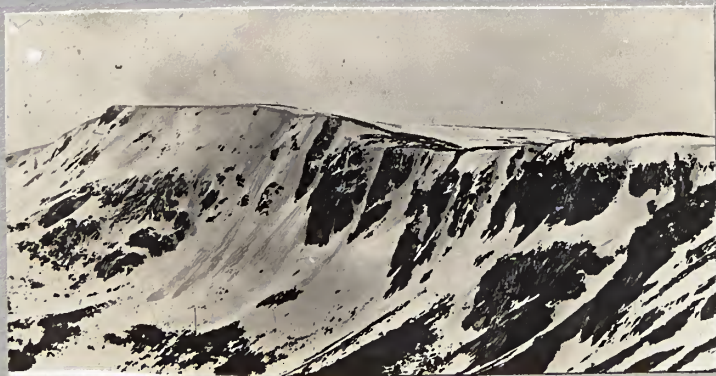
19 April. Motored to Derry Lodge & then  
to Cairn Toul<sup>3-10</sup> joining up with Drysdale's  
party. Misty on top. Glissaded right off  
top into Corrie & then down to Dee but  
not so good as 1919 glissade. Had to dig  
motor thro' snow drift. R.A.B. Drysdale  
Derry Lodge 5-45. Tomkinson M'Laurin



Monadh Mòr Cairn Toul (4241)  
(3651) over Ben Macdhui

22 April - Motored home by Spittal  
& climbed enroute The Cairn well (3059)  
in cold clear weather

S.J.  
R.A.B.  
H.M.



Ben Macdhui (4296)

Tomkinson  
McLross H.M. J.H.B. S.J. H.Sharn



at Fife Arms.

20 April - motored to bridge over Dee on Glen  
Geldie road at 10-10 am. Lunch at 2500' at 12-30  
& top of Ben Bhrotain<sup>3795</sup> at 2 pm. in great gale &  
thaw. Summit plateau 6" of melted snow & ice.  
Home over Cairn Clach Mhuilín (3087) at 3 and  
car at 4-10 pm.

Tomkinson  
R.A.B.  
S.J.  
H.M.

21 April - motored to Derry Lodge 9-45. Laid  
bridge at 10-15, Cairn a Mhaim (3400) 11-20. col at  
noon for lunch on edge of mist 2600' till 12-50. Then  
to Ben Macdhui (4296) at 2-20 by western snow  
slopes. Then by compass to Creagan a Corra Etchachan  
(3629) & in clearing weather to Derry Cairnyorm  
(3788) at 3-30 and Little Cairnyorm (3450) to Derry  
Lodge at 4-50. Beautiful views of Macdhui, Cairn  
Toul &

Thomson (Jr)  
Tomkinson  
M.S. Taylor  
R.A.B.  
H.M.



Ben Macdhui.





C.E.B. and M.G.T.  
on Tower Ridge

Ben Nevis

17<sup>th</sup> May 1924. Motored to Fort William via  
Kinlochleven. Wonderful primroses at  
beginning of new road. Stopped at  
Alexandra Hotel.

18<sup>th</sup> May. Motored past Distillery, 3 miles  
left road 9-20 & reached foot of Tower  
Ridge at 12-30. Up by west couloir to ridge  
& lunch in sun. Up first steep pitch below  
false Tower & turned as Taylor not fit. Down  
to Observatory gully & round below N.E.  
Buttress & up by Arête to Summit at 5.  
Very granular snow & stretches of ice on  
plateau above Arête. Beautiful day -  
Cruachan to Rum. Down by track to  
Hotel at 7-40.

M.G. Taylor  
C.E. Bell  
H.M.



M.G.T. traversing across  
to Arête



Coire na Ciste from  
Tower Ridge.

19<sup>th</sup> May - Left Alexandra 10-5, South Ballachulish  
at 10-50, Ba Pass at 12 noon. Up Mealla' Bhuiridh  
(Clacklet) 3636' at 1-45. Very fine day. Down by  
short gullies to car at 3-15. Bath, lunch &  
home to Glasgow at 7-30.

M.G.T.  
C.E.B.  
H.M.



Over cornice at  
Arête.



J.H. Bell & Mrs. Bell  
at Rieder alh - 1924



Old Building at  
Brigue



From Thierhörnli Pass to  
Rothe Kuppe Pass



at Brigue

### Switzerland 1924

July 1924. Via Paris to Bern & Spiez. Baggage  
delayed so spent day in S. & next day to  
Lenk to meet Ling. Bad weather.

S.J.  
W.V.L.  
H.M.

Tuesday. To Issigen in heavy rain for  
Wildhorn Hut. Stayed at Hotel &  
Wednesday, over Lauderhorn pass & up  
to Amerlen pass to Englisten Alp  
& down to Adelsboden.



Fletschhorn (13,127) and  
Laguinhorn (13,140)



Weissmies Hotel (9,100)



Weissmies (13,225)

Thursday. In afternoon to Englisten Alp  
for night & Wildstrubel. Heavy  
rain so next morning  
Friday, over Thierhörnli Pass & Rothe  
Kuppe to Gemmi Pass. Down  
to Leuk & train to Brigue.

Allalinhorn  
(13,235)

Alpkubel  
(13803) Taschhorn  
(14,755) Dom  
(14,111)

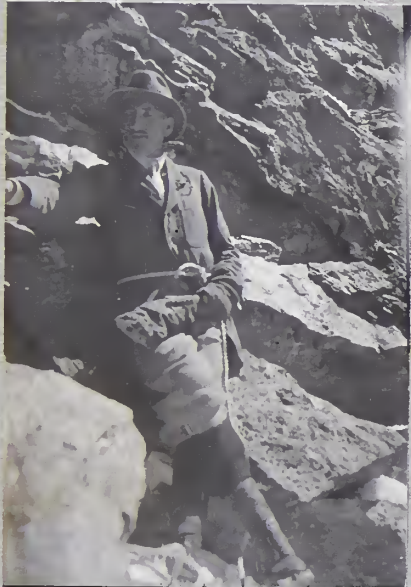


Mischabelhörner from Weissmies Hut.

Sat. joined by R.A.B. from  
Belalp & on Sunday up  
to Saas Grund.  
Monday, again rain but  
on Tuesday afternoon  
to Weissmies Hut & on  
Wednesday to our first peak  
the Laquinhorn in very  
fine weather. Special views  
over Italy from top.  
Thursday rested & photoed  
& to Saas in evening.



W.N.L. R.A.B. S.J.  
at Weissmies Hut.



Arnold on Laquinhorn



Fletschhorn and Laquinhorn

Friday again very dull  
& some rain.

Sat. started off for  
Britannia Hut with  
Porter. Lunch at the  
Platz & Hut about  
5 pm. Very few in  
Hut & good dinner  
& comfy night.

~~3000~~



H.S. Bowen W.N.L. S.J.  
at Weissmies Hut.



R.A.B. W.N.L. S.J.  
at Weissmies Hut.



S.J. and Serakhorn.



Täschhorn & Dorn  
from Kessjen Glacier



W.N.L. and H.M. at Plattje Hotel  
above Saas.

Sunday August. Left Hut at 4 a.m. &  
reached Adler Joch at 7. After  
grab in glorious sun, to Strahlhorn  
in 3/4 hr. Wonderful view all round &  
out beyond mountains to plains. Mt  
Blanc almost in foreground. Then  
down to Joch & to glacier by schrund  
near rocks. To Zermatt at 4 for tea.



Looking down Finzelen Glacier  
to Matterhorn



Allalin  
Glacier →

Strahlhorn (13,750) &  
Rimpfischhorn (13,790)  
from Britannia Hut (10,300)



on The Adler Pass (12,461)



S.J. in Adler Pass.

Adler Pass  
↓



Rimpfischhorn (13,790) Adler Pass (12,461) Strahlhorn (13,750)  
and Finjelen Glacier

Chateau d'Oex

7 Saanenmöser

25<sup>th</sup> Feb - 7 March 1925

To Kessel Hut & Co

Saaners Loch fluh Ewige each

Major Davies

" Bachus

J.M.

Monday. In Zermatt but left for home in  
afternoon. Weather broke again  
& S.J. and W.N.L. failed to get Monte  
Rosa.

New Year Meet 1925 - Loch Awe.

Thursday 1<sup>st</sup> Jany. In foul weather to Cruachan  
by high path. Up Meall Cuanaill in dense  
mist and then in terrific gale to Main Top.  
Absolute calm at Cairn. Down east ridge  
& glissaded into corrie.

J.S.M.J.  
C.F. Bell  
J.M. Thomson  
Ralney Brown  
D. McNab - J.M.



Gumfluh and Rudlhorn. Major Davies.

2<sup>nd</sup> Jany. In slightly  
better weather to  
Beinn Eunaich & over  
to Chochwill Col.  
Electric storms with  
axes hissing & hair  
on end.

A.K. Reid  
R.L. Paterson  
W.N.L.  
S.J.  
J.M.



Giggerhorn from  
Kessel Hut



Major Davies M<sup>r</sup> Fraser &  
M<sup>r</sup> Fraser  
at Saanenmöser



Saanens loch fluh



Hornfluh (6478)

Horn Tauben (6650)

Diadlerets

Olden horn

Hühnerspiel (6405)

Gumfluh (

View from Saanens loch (6600)



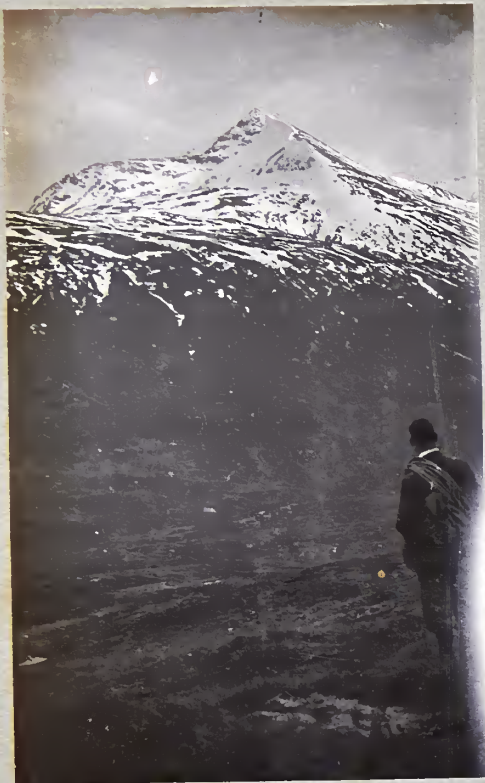
Chateau d'oex.



Major Davies



Wildstübel from  
Kessel Hut

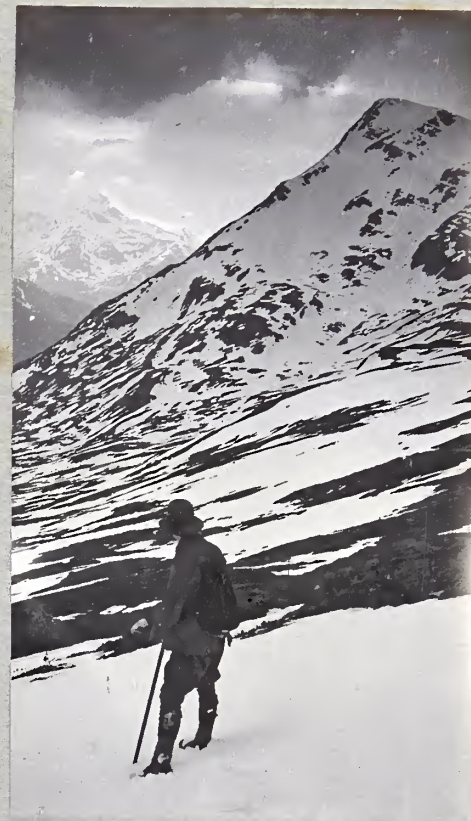


Bennein Mor (3700)



Tea above Steall.

Easter Meek 1925 Fort William.



Sgurr a Bhuic (3165)

10<sup>th</sup> April (Friday) From Shean Bridge to Steall over  
the Eassans. Misty clearing later

Bannister  
E.C. Thomson  
R.R. Elton  
H.M.

11<sup>th</sup> April. Motorized to old Shean Bridge Road & then  
up Aonach Mor in dense mist. Then over  
Aonach Beag & subsidiary tops & down to Steall

A.W.R.  
Collin R.  
S.J.  
D. McNab  
J.M.



Sgurr Cholnnich Beag (3175)



Bennein Mor from tea place.



H.M. R.A.S. Tibi Tony  
Mrs Tozz  
on Coddler (S.W. Slopes)

Decr. 1925. Motored from Kilmacolm  
on Sunday. Up Jean & Centre  
heak. Cold & full but dry.

New Year Meet 1926 Tyndrum.

Sat. By Loch Lyon to Heasgarnich &  
Creag Mhor. Then in gathering  
darkness towards Chaluim but  
gave up & down valley to Killin  
at 10 p.m. Motored back 11-30.

W.N.L.  
E.C.T.  
J.R.P.  
R.A.B.  
S.J.  
Joan



W.N.L. Nonie Joan.

Sunday. To Duchray in fair day  
with Stuart.

Sept 1925. From Rowardenan over Ben  
Lomond in heavy rain to Inverstaig  
Sunday at 1. & on Monday by Loch  
Katrine, Glen & Parlan Hill to  
Arzlui. Home by train. M.S.T.  
N.M.

Saanenmöser

Saturday 30<sup>th</sup> Jan. to  
Monday 15<sup>th</sup> Feb 1926



Joan Granny Nonie Mummy



Nonie & Joan



Nonie



Short hotel.





H.M. and W.N.L.  
on Saanerslochfluh



on Hundsrück



on Hundsrück



W.N.L. on Hundsrück



at Jaun Pass





~~Rinderhorn~~ Wildstrübel Charles W.  
Altders- From Tauden (7,026)  
Balmhorn



Lauenerhorn (8263)



Blick aus Wengen.



Spitzhorn (9,356) & Oldenhorn  
from Trütschberg Pass (6,800)



Pass

Stüblenen (7026) + Pass  
from Bettelberg (6676)



Tauben  
↓

Lauenenhorn  
↓

Trüttlisberg Pass (6800)



Below Pass looking south to Rothorn



Arrested Avalanche  
on Tauben.



Ben Chaluum (3354) from  
Creag Mhòr (3387)



Sardines on Stob nan Clack (3146)

20<sup>th</sup> March 1926. From Killin by car to Glen Lochay  
over Creag Mhòr & Chaluum to Crianlarich  
E.C.T.  
R.R.E  
H.M.



E.C. Thomson & H.M.



Cruach Ardran Ben a'Chroin Ben Chabhair  
An Caisleal  
from slopes of Chaluum



Spiðean Mialach (3268)



Sairich (3015) & Loch Quoich



The Saddle (3317) Sgurr na Forcan (3100)

Easter Meet 1926. 2<sup>nd</sup> April to 4<sup>th</sup> April

Friday, Apr. 2. Motored with C.E. Bell to Tomdoun & arriving from Bullachalish at midday, went on to Spiðean Miallach

C.E. Bell  
NYM.

Saturday

By car to foot of Saddle & up by the Forcan Ridge. Very fine & rock scenery & good day. Then up Sgurr na Sgine & home over Faobhag

C.E. B.  
S. J.  
R.A. B.  
J. Drysdale  
NYM.



The Saddle from North



On East Ridge of Forcan



Sgurr Mòr from Sgurr Thuilin



Sgurr na Ciche (3410)  
from South.

Drysdale      Glover      Arnoll.



Mists on Sgurr na Ciche



Garbh Chioch Mhor (3365)  
from North

Ben A'Ben

Sgurr nan Coireachan (3125)



Sgurr na Ciche Range  
from Sgurr Thuilm

21 April 1926

Sunday 4 April 1926.

Motored to Kenloch quoin & then up to  
Sgurr na Ciche in clearing weather.  
Glover then down alone & rest over  
Garbh Chioch Mhor etc & nan Coireachan  
to Lodge where we had tea

Glover  
Drysdale  
R.A.B. S.J.  
S.J. C.Riley  
C.Riley  
J.M. J.M.



Saxifraga oppositifolia



Garbh Chioch, Sgurr na Ciche Ben A'Ben



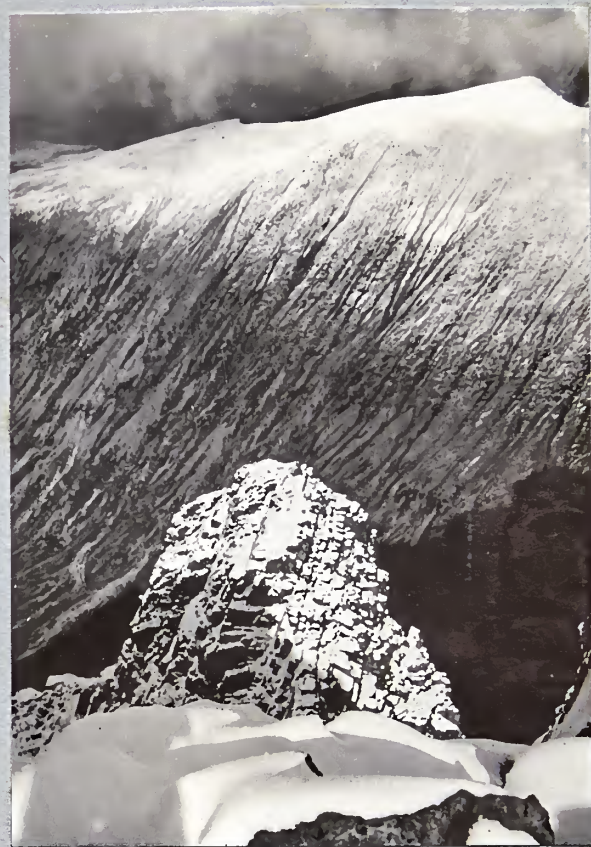
Wrong method  
no hitch.



Correct Method  
a good hitch!

Machrihanish, July 1926.

Photos. Taken on rocks to  
show points in rock climbing



Tower and shadows  
on Carn Mor Dearg

Fort William. Sept 1926. Motored up on  
Saturday to Alexandra Hotel  
Sunday. Motored to head of Glen Nevis  
then straight up south side of Ben.

New snow on top so  
returned same way. Clachlet Lui



Ardgour & Corran Ferry

Monday  
Motored home  
taking in en  
route Meal  
& Touris of  
Clachlet from  
Ba Pass.

J.M.  
J.M.



Sgorr Mhain from Nevis



H.M. R.A.B. Goliath  
(Farrant)  
at Kessel

Saanen moser 1927.  
20 Jan/12 Fedy

Splendid weather &  
snow very good.

To Adelboden & back.  
Frütisberg twice, Stöckli  
once.

Children took Chickenpox  
& H.M. shingles.



Daisy on Hügli Slopes

New Year Meet 1927.

Arrochar, 1<sup>st</sup> Jan 1927. Motored  
up Glen Fyne 3 miles to foot of  
Ben Bulbin. Then by compass thro  
mist to top, 3 1/2 hrs from hotel.

2<sup>nd</sup> Jan. W.N.L. A.D.M.C.N.  
G.S. S.J. M.M.

To Ben Bulbin via Cobbler col  
in wind and mist. No snow  
except in drifts. Back same  
way. Same Party with R.A.B.



On Hügli Slopes.





Romang at  
Barwengen



Di Garson at  
Kessel



Bluebell Nairn



Below Bears Den



Daisy



Mons. Forin at  
Kessel



Charles W. & Gonin



Joan Walker



Joan, Winnie, Anne, Nonie.

Easter Meet 1927. Ballachulish

16<sup>th</sup> April To Bidein by snow & rocks on face of S.C. nam Beith  
Then round to S.C. an Lochan & glissaded back to Corrie  
A very good day with sun & cloud.

17<sup>th</sup> April To Sgor Donald in heavy rain & snow. Only one Peak  
Rest of party also over Sgor Dearg

18<sup>th</sup> April Motored to Fort William to select site for  
Hut. Then back to B. & motored home with  
Allan A. to Kilmacolm

S.J.  
1.5  
D.MEN  
HM

G. Sang  
J.A. Parkes  
W.A. Morrison  
HM.



Daisy



Constance &  
Bluebell.



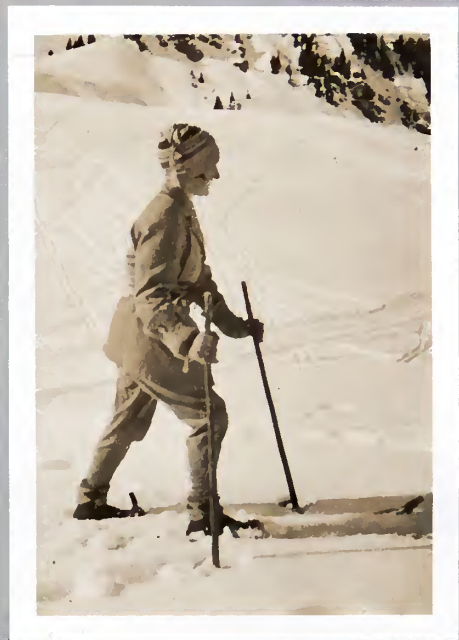
Anne at  
Kessel

St Catherines. July 1927.  
From Rest & be Thankful over  
Ben an Lochan to S.C. in fine  
sunny afternoon. H.M.



At Sport hotel

Willie Walker



Frances at  
Kessel.

Suanchen Moser 1928.  
26 Jany 16 Feby

New Year Meet 1928

Loch Awe

31<sup>st</sup> Decr. 1927

Straight up Ben Vourie from  
Hotel, & cut across below top  
to col to Stob Garbh & so round  
ridge to Main Top at 3p. Down  
by valley in very icy conditions  
& home at 5-30. W.N.L. J.R. Philip  
G.S. J.M. H.M.

1<sup>st</sup> Jany 1928

Motored to foot of Taynall Peak  
Then straight to top. J.M. & W.N.L. came  
again. Others to Main Top (20 mins)  
then Meall Cuainil & down to Ross  
at 4 p.m. for car.

Both days misty & cold  
with clearer intervals.

W.N.L.  
W.B. Skiers  
R.R. Elton  
J.M.  
H.M.

Gumfluh

Rudli

Chateau d'Or



Above Secret Chalet

3<sup>rd</sup> December 1927.

After Annual Dinner to Coddler  
in two cars, Very icy on top &  
did not go on to summit as no  
rope. To North Peak also & back  
to cars in Glencroe.

G.A. Solly  
G. Sang  
G.E. Bell  
D. Maclay  
J.M.  
H.M.

6<sup>th</sup> August 1927.

To Ben Nevis by Tower Ridge.  
2 1/2 hrs to Tower in torrential  
rain & top at 2 p.m. for unveiling  
of Indicator by Mrs Malcolm

E.C.T.  
R.R.E.  
H.M.

Unsettled weather but good snow. Traverse of Rinderhorn Ridge & down to Ochseite & Wie Videmanet with Jeffries, a very fine day, but Charles damaged his knee. Stöckli & Trüttsberg one each, latter Lenk to Laenen.



Anne & Frances  
at Secret chalet



Bluebell.



Frances &  
Bluebell



Bluebell.



Spiezhorn & Lauenen Valley  
 Rinderhorn. Started for off-day <sup>11am</sup> to Bern Hut, but continued  
 round W. of Hornfluh to Kessel. As weather kept improving  
 up Horn Tauben. From there ridge to Barwengen looked interesting  
 so down with some difficulty & passing chalet kept on till  
 eventually reached Rinderhorn in perfect weather (3-5 hr.)  
 Skied whole way to Ochsen on perfect snow (only 2 falls!)  
 & arrived 2-45 at Inn.

Arnold B  
 J.M.



H.M. on Trüttsberg Pass route

Trüttsberg Pass. Left by 9-30 train & reached Lenk  
 11-15 in doubtful weather. Up by summer route  
 to Pass in bright misty weather. Bad light but  
 easy snow & kept too far to right on way down & had  
 to cross nasty ravine to get on to proper ridge. Great  
 run down to Lauenen. Langlaufed to Gstaad in  
 $\frac{3}{4}$  hr.

Donald Selroy  
 C.W.W., R.A.B.,  
 W.M.L.  
 G.S.  
 H.M.



View south from Horn Tauben



Summit of Trüttsberg Pass.

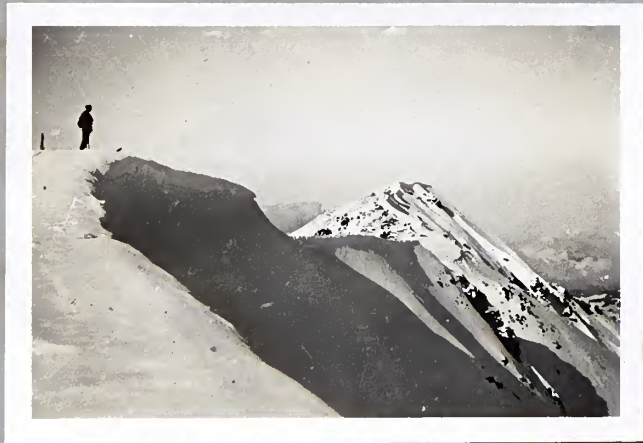
Willstrubel  
↓



Hulda Walker Bluebell Nairn  
at Barwengen

Rinderhorn. Over Saanersloch to Barwengen  
in 2 1/2 hrs. Lunch in chalet in wonderful sun.  
Then along ridge to summit with very fine  
cornices & views. Rather difficult & icy going  
down top part. Thereafter good snow to  
Ochseite.

Bluebell Nairn  
Hulda Walker  
G.S.  
J.M.



Arnold on Rinderhorn

Kinlochewe

Easter Meet 1928.

4 April. Arrived alone at 1-30  
& after lunch to Creag Dubh  
(2-15 to 4) Home at 5 for tea.  
J.M.

8 April. Motored by G.S. to Stalkers  
hath Torrion Road 9-50 & up  
& over Ridge (11-50) & along to  
Ruadh Stac Mor (3309) at 12-30.  
Home by Grudie car with  
Solly, Goggs, Glover, Robertson, Sang  
W.V.L.  
J.M.

9 April. Motored to Torrion Lodge  
10-30 & by corrie & great gash to  
Alligin (Sgurr Mor) 3232 at 12-30  
then home over Tom na Truagach  
(3021) 1-40 to Lodge at 3 P.M.  
G. Macphie  
Allen Smith  
Marlin  
J.M.



Ridge of Rinderhorn



H.W., B.N., & H.M. at  
Barwengen



Horn Tauben & Saanersloch fluk  
from  
Rinderhorn.



Inglis Clark Hut site  
from N.W.

July 1928. From Morar  
on Sat. afternoon to Fort  
William & met Sangs.  
On Sunday to site of  
Inglis Clark Hut to inspect  
work. Mist & rain came  
on at Hut. After lunch  
with foreman climbed by  
Tower Gully on old hard  
snow to top & down by  
path.

Mrs Sang  
G.S.  
J.M.



Hut site & Corrie na Ciste  
from N.E.

2<sup>nd</sup> Sept 1928. Morar to Kinghouse on Sat.  
with Jacks. Lunch at Loch Lomond. Inn  
at 3:30 & met Shiers &c. On Sunday in  
perfect weather in two parties by  
Crowberry Ridge to B. Etive Mor, Elton  
& Curved Ridge. Home that night.

S.J.  
Ian Jack  
W.B.S.  
N.W. Mowbray  
R.R.E.  
J.M.



Shiers on Abraham Ledge

A.H. →

J.M. →

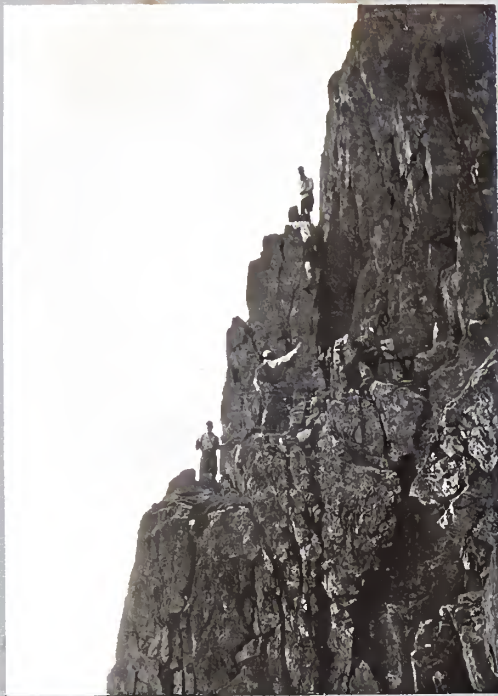
Lawson →



on Curved Ridge



Shiers on Greig Ledge



Climbing Party below A's Ledge



Inveroran & Loch Tulla



Crowberry Tower

Skiers  
←  
Elton  
←

16<sup>th</sup> Sept 1928. Up Buchaille to complete film of Crowberry Ridge. Day dull & light poor but no mist until C. Tower. All photos from Ridge or Curved Ridge. Climbing Party = N.W.M., Elphinstone, Matheson, Stuart, Brown, Taylor, Mivab, Sang, Rook, Corbet

15<sup>th</sup> Sept 1928. Motored on Sat. (11-15 am.) & had lunch at Ba Bridge (1-30) Then to Kingshouse for rooms & change. Back to Ba Pass & up Mealla' Bhuirich (3636) in perfect weather & views all round.  
N.W. Mowbray  
T. Elphinstone  
J.M.

New Year Meet 1929. Crianlarich

30<sup>th</sup> Dec. 1928. On ski up Cruach Ardran Valley in brilliant sun but wind blown snow from J.M.  
31<sup>st</sup> Dec. By car along Dalmailly road then across river by foot-bridge. Contoured round & up Ben Lui by N. Ridge. Then over Ben Oss to Tynarum at 5 pm in dark

Ian Jack  
Brown  
Mowbray  
Hirst  
J.M.  
Gothers  
as in photos.



Ling Glover Ian Jack  
J.M. Hirst Jack



Ben Cruachan from Lui



on ridge of Lui





Ben Cruachan & Dalmailly Valley

1<sup>st</sup> Jan 1919. Along ridge  
to Stob Parva of Cruach A,  
in brilliant sun to take  
cinema pictures. Sat  
for hour on top basking.  
Saw from Ailsa Craig to  
Skye.

G. Sang  
Hirst  
J.M.



Ben Lui

Frances J. J.M. Mrs Howard May Todd



Di Carson Rinderberg Hub

Saanenmöser 1929.

Arrived alone on Thursday 31<sup>st</sup> Jan.  
Others on Friday 8<sup>th</sup> Feb. All left on  
Tuesday 26<sup>th</sup> Feb. via Calais, easterly blizzard  
boat did not sail & got later one 120' from Paris  
London 8-30. 3 1/2 hrs late



Summit of Rothorn

Rothorn

Sleigh to Lauenen 10-45. High chalets  
for lunch (to 1-45) top at 2-45. Very bad  
snow coming off top to Col. Thereafter  
lower snow but kept too high on  
traverse to Pörisgrat. Splendid run  
off & down to Lenk road at 5 pm,  
caught 6 train after drinks

J. Scott  
J. Harrison  
D. Carson  
J.M.

Col  
↓



Iffighorn from Rothorn

Iffighorn. Early train (7-30) to Lenk (8-20) &  
Sleigh up valley (9) Then up Iffigental in  
great cold (shadow) to Iffigensee. Crossed  
it & climbed into sun for lunch 12-15. Then  
up Horn but turned too hard & icy & across  
to Col. Left at 2 & after dreadful run in bad  
snow caught 4.40 train at Lenk.

J. Harrison  
A. — — —  
J.M.



Ridge of Rothorn

Col →



Albristhorn &c from  
Wildhorn Hut

Hünserück Up by Wannenegg &  
across Stand to High Chalet (2 hrs)  
for lunch. Then over top & along  
Ridge in usual bad conditions.  
To Jaun Pass & down to Weissenberg  
keeping too much to left.

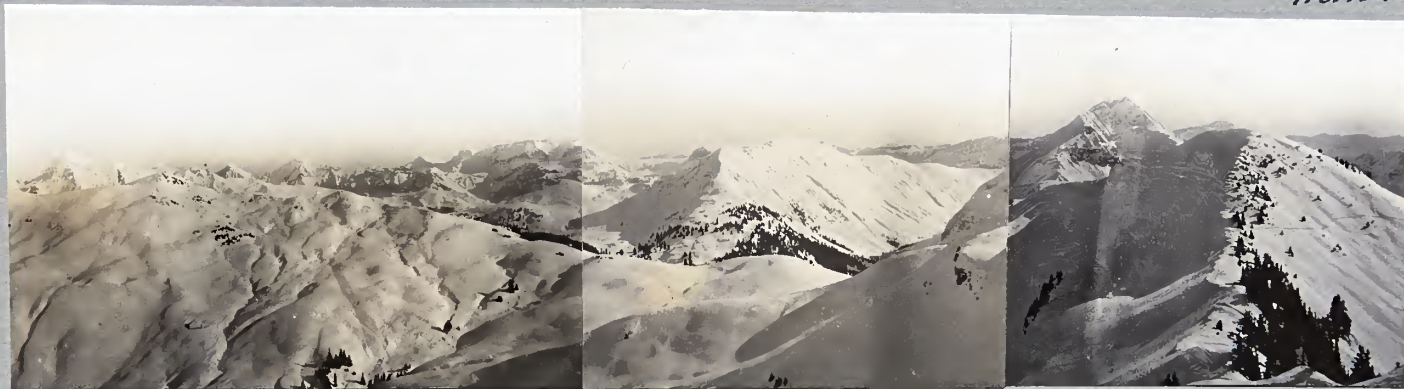
Soutar  
Davies  
Jr.



Rothorn from Pörisgrat.

Albristhorn Balmhorn Wildstrubel

Gusserhorn Wildhorn  
Horn Tauben



South from Saanerslochfluh.

Rinderberg. By high route  
to Saanersloch & down to  
Barwengen, very avalanche  
Then along ridge to R. at  
3 (4 1/2 hrs) very good run down  
to Zweisimmen at 4 hrs.

Mme Eggemann  
M. —  
- Fox, D. Rast  
Jr.  
& Flora.



Diablerets from  
Wildhorn



Oberland from  
Wildhorn



Above leafall.

Romang J.H. Jim.



Start from Hotel



Sleigh at Lenk.

Wildhorn.

21<sup>st</sup> Feby 1929 Left by 10 train for Lenk & by sleigh up valley (1200') After lunch at Iffigen in perfect weather to Wildhorn Hut at 4 pm. Party of 3 English (2 ladies) & 2 guides, and one Swiss. Pretty cold & all slept in living room with fire. Good dinner, turned in 9 pm.

J.H. ↓

↓ Romang



Iffigensee.



Top of Wildhorn (10,760)



Wildhorn from Glacier

Romang  
←



Looking to Wildhorn Hut

22<sup>nd</sup> Feby. Left Hut at 8-10 a.m. & passed  
other party at Icefall at 9-15. Very  
good going & perfect weather. Off  
ski at 10-15, 150ft below top. Then  
to summit after halt. Wonderful  
view all round (rivalling  
Sbrakhorn in Aug. 1924)  
Down to Hut  $\frac{3}{4}$  hr very  
difficult snow & skis off  
150' thro Icefall. Lunch in  
Hut. Then  $\frac{3}{4}$  hr to Isfigen. Snow  
improving as we descended.  
Caught 4 train after good  
drinks in Lenk.

Romang  
J. Harrison  
J.M.



Grand Combin & from  
Wildhorn



Pfefferhorn, Trübelsberg &  
North from Wildhorn



H. MacRobert.



J.H. →

← H.M.

A.H.

on Isstgenhorn



A.H.

J.H. and J. Scott on Wisstathorn.

Pörisgrat

Wildhorn

Rothorn

Weisshorn

Issigenthal

Pörisgrat



Spiezhorn  
Rothorn

Lenk Valley

Wildhorn & from Thierberg.

## Easter Meet 1929.

### Fort William.

Sat. 30<sup>th</sup> March. Motored from Alex.

Hotel to Kinlochleven & climbed Na Gruagaichan 3442, but first cut across N.W. slopes & up Binnein Mor (S. top 3475) & Main top 3700. Then back along Ridge & over Na G. A hot sultry day with practically no snow anywhere.

Thereafter to Ballachulish for Ladies Club Dinner. Then to Alexandra at night.

W.N.L.  
G.S.  
E.C.T.  
R.R.E  
J.M.

Sunday. Very heavily laden to Hut

in bad weather. Spent rest of day cleaning up & preparing for opening Ceremony.

Dr & Mrs Clark arrived up at dusk on ponies & a very enjoyable night spent in Hut.

President G.T.G.

Ex — D.I.C.

Ex — W.N.L.

Ex — F.S.G.

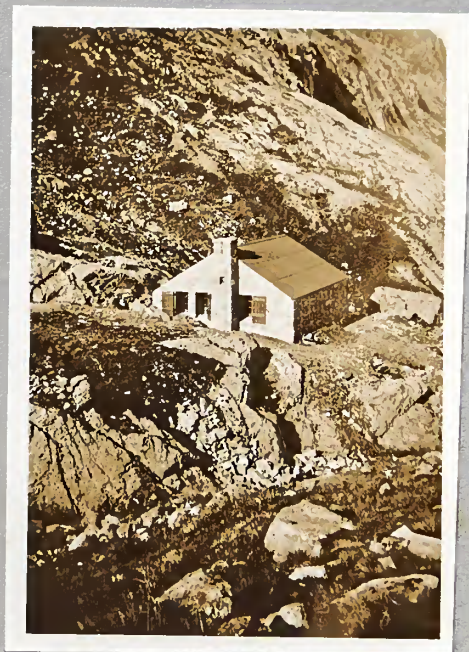
Vice — A.E.R.

Vice — J.M.

Hut Cust. R.R.E

Ex Pres. of L.S.C.C.

Mrs I. Clark.



Charles Inglis Clark  
Hut.

Monday 1<sup>st</sup> April 1929. A wild morning with snow and wind. Started off for Ben but took route up rocks on to C.M.D. Arête & wasted so much time that had to come back over C.M.D. to reach Hut for Opening. Had battle in snow storm.

G.T.G. FS.G.  
W.N.L. R.R.E  
J.M.

In afternoon crowds started to arrive & the opening took place in snow & mists. Thereafter some 400 cups of tea were provided.

In evening a great Dinner was held at Palace Hotel to which the L.S.C.C. were invited.



Ben Nevis and Easains  
from Meall a' Bhuraidh (3636)



Stob Fhabhar & Ben Cruachan  
from M. a' B.

18<sup>th</sup> May 1929. Left Glasgow at 11 am. for Kingshouse  
& after changing up <sup>Sron Creise</sup> Meall a' Bhuraidh in perfect  
weather by ridge from Glen Etive. Then  
along ridge over Stob a Glais Choire (3207) to  
Creise (3600). N.W.M. along to Clachlet & back.  
Then glissaded down face of Sron Creise on hard  
snow with sharp stones as ice axes. N.W. Mowbray  
J.M.

20<sup>th</sup> May. Motored to Sturdy at Glencoe then up Am Bodach  
(3085) where long bask in sun. Then out  
on rope & traced along Anach Eagach in 55 mins to  
Stob Choire Leith (3080). J.M. Down from here & bathe in  
Coe; N.W.M. to Sgor nam Flannaidh (3168) & down. Home  
that night via train at Crianlarich. N.W.M.  
H.M.

14<sup>th</sup> Sept. 1929. Having come up by evening train Friday, Sat.  
bought provisions & up to Hut in heavy rain. Had  
to change completely there. Cleared a little at 4 pm  
& some up Castle Ridge, 15 mins to Ridge, 1 hr 20 to top  
& down No 5 Gully; two went over Ben & down by Ar Etie  
N.W.M., S.J., I.J. D. Hotchkiss  
J.M.

15<sup>th</sup> Sept. Still very wet but as we were going home S. & J.  
left about 11 & climbed Observatory Gully & out by ledge  
on to Tower Ridge <sup>1 1/2 hrs</sup> Then over Tower to summit & down  
hath. Stuart motored home. I scooped overnight  
S.J. H.M.

19<sup>th</sup> May. Motored down Glen Etive to Coileitir  
& left car there. Then up Allt Ceitlin to Meall  
nan Eun (3039) a most flat uninteresting top.  
Then over Stob Coir' Albannaich (3425) a fine hill  
to Glas Bheinn Mhor (3258) all in fine weather.  
Too lazy to go over Starav so down Allt Mheuran  
to car. Had tea & bathe in Etive. N.W.M.  
H.M.



↑  
S.M. & Hut

Carn Dearg of Nevis  
(3961)

New Year Meet 1930.

Newton more.

Left London Monday night & arrived Kingussie at 8-15am. motored to N. & had breakfast.



H.M. by G. Sang.

31<sup>st</sup> Dec. Left 9-10am.  
 & motored to Arzverinie  
 Lodge & on to L. Earba.  
 Trees across road. Then  
 up Creag Pitridh (3031)  
 in sun frost & wind  
 with lots of snow.  
 Then in mist to Geal  
 Charn (3443) with very  
 fine cairn. A good day  
 with sun, clouds &  
 mist.

G.T.G.  
 W.N.L.  
 G.S.  
 J.M.



Bheinn Bheoil and Ben Alder (3757)

1<sup>st</sup> Jan 1930. With skis up by Red Hut to Geal Charn, Carn Sgulain (3015) and back to A'Chailleach (3045) & down past Hut. Snow too slow & getting worse with rain which started at 1-30pm.

2<sup>nd</sup> Jan. By motor to Arzverinie then by Loch Pattack road till stopped by trees 4 miles from Loch. Then walked over difficult road & path in fierce gale to Ben Alder but up Ben Bheoil (3333) to save time. Top ridge all ice & gale made very difficult. Back to Road at 5pm. & met car which had come round by Loch Erich. Another fine day but cold.



S.J.  
 I.J.  
 R. Brown  
 G. Sang  
 McPherson  
 J.M.

Saul Inglis H.M. R.C. Paterson Rooke Corbet  
 S. Jack W.N. Ling Rainey  
 Mac Donald  
 Brown  
 E. Marshall  
 J.M. A.E.R.

D. McPherson  
 J.M.



Ian Jack Geo. Sang.

at Newton more Hotel.



Saanenmöser 1930.

Left Thursday night 23<sup>rd</sup> January

Arrived Sat. morn 25<sup>th</sup>

Home Monday night 17<sup>th</sup> Feby via Calais



Huldah



H.M.



Winnie Walker  
Joyce Walker  
Frances Joan



Frances Daisy Joan



Daisy Joan.

Donald Gilroy  
Mrs Eggemann Hulzah



Lunch. Below Trütliberg

Trütliberg Pass with Frances  
Mowbray  
Hirz  
Donald &  
Eggemanns  
Sleigh to Lauenen &  
Hay Luge for skis for  
3 kms. Very fine day.

Niederhorn. Hulzah, Donald & I  
missed the train & motored  
home, thanks to absence of  
snow.



Donald Hulzah Mowbray Frances  
Eggemann H.M.

Rinderhorn

over by Barwengen &  
up ridge to top. Straight  
run off top to col & then  
very good to Zweisimmen

Mowbray  
Donald  
H.M.

Hirz →



Frances on Bettelberg

Hundsruck Over Wanneneegg  
& along Ridge. Very fast snow  
to Jaun Pass.  
Mowbray  
H.M.



Mowbray on  
Hundsruck



Jessies, Hirz & Douglas on  
Rinderberg



Hornberg.

Rothhorn. Foul conditions & very little snow on high ridges. Took correct route up to Pörisgrat but crust on way down.

A. Harrison  
Mowbray  
Donald  
H.M.



Gumfluh on way  
to Viedemannette



Saaterslochfluh Run.

Wildhorn. Motored from Z. to Lenk via  
sleigh to 319-399. Strong wind above. See  
blowing dense clouds of snow. Good  
dinner in Hut (new & comfy) used S.A.C.  
Room; 3 others arrived late. Left at  
9 after doubtful morning & passed other  
party at Ice Fall. They followed our tracks.  
Reached top 11-45, beautiful cloud effects.  
Wonderful run down summit-ridge  
1500' powder snow. Below Hut bad crust.  
Caught 6pm. train at Lenk. Mowbray  
Donald  
H.M.



Below Rothorn



Wildstrudel from  
Bettelberg

Mowbray Ling Corbett  
 Jeffry Lawson Matheson Hunter  
 Glover A. Harrison J. Harrison Scott



Group at Hotel

Easter Meet 1930 - Aviemore.

Saturday 19<sup>th</sup> April. Skiing on Braeriach in dreadful weather  
 Sisson H.M.

Sunday. To Lower Boddie & up B. in slightly improved conditions  
 Back down to Loch Elnich W.N.L. R.A.B.  
 Glover Peter Mowbray H.M.

Monday. Again to B. on ski & had splentid day. Ran  
 from W. top to Loch Elnich. See Ski Club Journal.  
 M. twisted knee & several other minor casualties  
 Mowbray Sisson  
 Jeffry H.M.  
 Allan A.



Norman Mowbray's accident on Buchaille Etive  
 13<sup>th</sup>/14<sup>th</sup> Sept 1930. Telephone message at 11-30pm.  
 from A. Harrison. Rang up Stuart & after food  
 & ringing Elton left at 12-45am. picked up  
 Elton & Steven. Reached Kingshouse 6am.  
 Found Norman at 10am. Down to moor at 4pm.  
 Motored home with Di Carson. See S.M.C.J.



H.M. Ben Ghlas  
 F.M.M. Wind slab avalanche

22 June 1930

Left Cladoch, Loch Lomond at 10-30 &  
 reached Lawers 12-30. Straight up looking  
 for "Early Purple Orchises". Top 3-15 in fairly  
 clear weather & patches of snow. Down at  
 4-30 for picnic tea. Pat, Daisy  
 Frances, H.M.

17<sup>th</sup> Augt 1930 Left K. 9-45, Glencroe 12. &  
 up Coddler in perfect weather. Up Jean &  
 then Main Top taking cinema of climb  
 Left top at 4 & picnic tea in Glen at 4-35.  
 May Todd, Frances,  
 Michael, J.M. H.M.



C.W.W. and H.M. in hole  
 on Trüdisberg, 1931.

NEW YEAR MEET: 1931

Arrochar.  
 1<sup>st</sup> Jany. Motored to Rest  
 then over Luidhean to Inna  
 & down towards Ben Vane.  
 Had very bad cramp in  
 glen so home. Others over  
 Vane W.N.L.  
 J.K. Macdonald  
 Colin R.  
 H.M.

2<sup>nd</sup> Jany. Up Narnain by  
 sugach corrie in driving  
 snow & mist. Then along  
 ridge to Crois & back  
 down to Arrochar  
 J.A. Scott  
 A. Harrison  
 W.N.L.  
 H.M.

Left Sat. morning.

4<sup>th</sup> Jany 1931. From Killin with McLeans  
 to Skiing ground. Over shoulder of  
 Ben Ghlas in bright sun shadowed by fierce  
 wind. Saw wind slab forming & small  
 avalanche

Ross MacLean W.B.S.  
 Mrs \_\_\_\_\_ P.R.S  
 Frances H.M.



H.M. on Hundsrück



Viezemanette



Wistälhorn from St. Stephan run.

Saanenmöser 1931 Left London <sup>Wednesday</sup> ~~Thursday~~  
 after seeing F. off to School. Arrived Thursday  
 22: Jan. Left for home Monday 16<sup>th</sup> Feby.

Alan King & W.B. Skiers with us for fortnight.  
 Unsettled weather with some very deep snow.  
 Only did usual runs many in dense mist -  
 Stückli with Barrans & Horn Tauden also

Only new run was to St. Stephan from Kessel  
 over Horn Tauben, Barwengen, Blasted Oak &  
 across & down lower route. Alan King  
 Hulzah  
 W.B.S.  
 H.M.

King Hulzah H.M.



St. Stephan Run



Saanerslochfluh Path.



Wistälhorn re. from Kessel.



Miss Collins H.M.



Miss Collins H.M. Miss Stephen.

Killin Left Glasgow with Joe MacLay  
Friday night train &  
Sat. 14<sup>th</sup> March 1931. Up Glen Lyon Road  
in dull weather & up glen towards  
Col, Corrainach - Ben Glas. Had  
quite an amusing run on fast  
snow.

Miss Collins  
Miss Stephen  
J. MacLay  
H.M.



M. Clark H.M. McAndrew  
Miss Collins Miss Stephen

Sunday 15<sup>th</sup> March. Large party up & to  
same ground. The Jack MacLays & N.M.  
to Col in rotten weather; down other  
side short bit, then back & good run  
down glen to rest of party. C.W.W. &  
Sharps also there. Very amusing time  
Motored home to Glasgow that night.

SKI CLUB MEET - 1931.

Aviemore, Sat. 4<sup>th</sup> April. Motored to Glen  
More Lodge & carried ski up 40 mins to  
Corrie Cals. Weather very blustery & snow  
difficult. About 20 skiers there

Sunday 5<sup>th</sup> April with same party to  
same corrie. Weather better also  
snow. With H. Mitchell & Scaramanga to

Col of Cairngorm. Very little snow on N. R. 12<sup>th</sup>

Monday. Train to Dalnaspittal & back to  
Dalwhinnie over a Bhuidheanach & Carn  
a Cairn. Beautiful day & views. Great  
finish down Gully to D.

Cairngorm



Summit Plateau



Hut below Carn Liath

Friday 1<sup>st</sup> Jan. After fine weather & hard frost rain fell heavily. To Carn Liath & back by hill road.

N.L. Hirz  
A.H.  
R.J.  
J.M.



Joan W. Kiki, Jom at Kessel.

Saanenmöser. Arrived Sunday 28<sup>th</sup> Feb by picking up Arnold at Chateau d'oev. Had splendid weather & almost perfect snow.

Mürren. Spent 2 days here arriving 2<sup>nd</sup> March to Sat. morn. 5<sup>th</sup> on Thursday out with Lady Raeburn & Fräulein Zingg & cinemaed Stalom. A. & I with Bracken to Schiltgrat in afternoon.

Friday to Schilthorn (2990 m) with Lady R. Fl. Zingg, E. Feuz, Jones, Feuz Jr. A great run with wonderful views. A. checked a temperature. Back to S. on Sat. A. left & C.W.W. arrived. Good runs & J.K. arrived for last weekend. Home Monday night 14<sup>th</sup>.

19<sup>th</sup> July 1931. Slept in Motor at Loch Rannoch where arrived at midnight (18<sup>th</sup>) in beautiful weather motored up new track to Erich Dam & so to Ben Alder. Heavy going. Had dinner in Hotel & then camped on Loch side.

20<sup>th</sup> July. Motored home by Loch Tay & climbed Ben Lawers enroute. Another fine day.

J.M.  
N.M.



NEW YEAR MEET 1932. BLAIR ATHOLL.

2<sup>nd</sup> Jan. Motored to Dalnaspittal & then to Sgarneach Mor & home over the Atholl Sow, - a well named lump. Same party.

3<sup>rd</sup> Jan. From Dalnaspittal to a' Marcaonach & Boar of Badenoch - a most disagreeable day cold & wet

P.B. Allan Smith Davidson  
I.J. A.P. A.S.P.

S.J.  
J.M.



Lizard in N.M.'s hands.

Glover Unna C.E.D. H.M.

Group at Tomich



Stuart & Charlie at Deannie



Changing at Deannie.

EASTER MEET  
1932.

Glen Affric, Tomich  
Hotel.

25<sup>th</sup> Mch. Arrived from  
London at Beaulieu 10-20  
& met C. To Glen Strath  
farrar & from Deannie  
climbed over Gardh  
Carn (2801) to Sgurr Ruadh  
(3254) 3pm. Back to Keeper  
for tea & eggs 4-20.

C.E.B.  
S.J.  
I.J.  
J.M.



Mam Sodhail (3862)  
from Carn Eugh

26<sup>th</sup> Mch. Left Glen Affric Lodge 10.30 & up path to N.

Then W. to Sgurr na Lapaich (3141)<sup>1245</sup> Very fine hill.  
Good view of FOX. Fine walk to Mam Sodhail (3862)  
(2-10) over Mullach Caizha Raishich (3262). Dull & cold  
wind. Down to Col & passed other party (A.B., P.B.,  
I.J., J.S.M.L.) Carn Eugh (3877) 2-45. Ben Ula (3294)  
3-30. Very steep grass descent to path & to Ben  
Ula Lodge where made tea 4-55.

C.E.B. S.J.  
I. Campbell  
J.M.

(Baker & Davidson with us in car  
& to M. Sodhail)



P.B. & I.J. Davidson A. Smith  
Anderson J.M.



Arnold & J.M.  
on S. a Coire Gillais

Ian J. S.J. (J.M.)  
at Deannie



27<sup>th</sup> Mch. From Cozac Old Lodge on Loch Mullardoch at 11 am. & up path on left bank allt Taige to Lochan Tuill Bhearnach in rain & wind. Climbed easy ridge in new snow & shelter to col then N. to Sgurr na Lapaich (3773) a very fine peak at 2-15. Dense mist. S. over S. nan Clachan Geala (3541) Braigh a' Choire Bhig (3303) & down to allt Taige from col to Mullach a' Gh. Thuill. Car at 4-15 & tea.



S.J. C.B.

I. Campbell a' Choire Ghlais (3554) at Glen Affric Lodge. 3-32. Down into Glen & contoured round back to car.

Home by night train.

A.B.  
P.B.  
I.J.  
J.M.

Unna. C.E.B. I.J. AER. A.B. at Tomich

C.B.  
A.B.  
P.B.  
S.J.  
I.J.  
J.M.

28<sup>th</sup> Mch. From Broulen Lodge in Glen S.F. (Keeper - Fraser) at 11-15 in bright sun, by path right bank allt Told Mhuic, to Lochan. Lunch & then to col to Sg na Fearstaig (3326) 2-20. Ridge to Sg Fhuar-nadh Thuill (3639) Very fine views Braeriach - Skye. Met Bartholomew, Blackie, Matheson. Then over Creag Ghorm a' Bhealaich (3378) 3-5 to Sgurr

Ben Nevis Hut

2<sup>nd</sup> July 1932. After night in Station Hotel to Hut in very heavy rain. Achintee to col in 65 mins. - to Hut 55 mins. Spent day drying, sleeping & reading - whole of Treasure Island.

3<sup>rd</sup> July In heavy rain at 12 noon to Arête & over Ben at 1-30. Left 2, Achintee 2-55 Hotel 3-45. Spent night there W.B. Sheils G.R. J.M.

23<sup>rd</sup> July. To hut in cloudy weather in 2 1/2 hrs from Achintee. Left at 2 pm. for Tower Ridge. Movie of east side Douglas Boulder & step above, then mist & rain. J.N.C. in Tower Gully & up via Gah. Other two up Ridge, Down by Arête

24<sup>th</sup> July. Left at 11-30 in clearing for C.M. Deary. Took colour movie but mist on Ben all day. Top at 11. Down to Hut, lunch, cleared up left 4 & A. at 5-15. J.H. A.H. I. Campbell J.M.



Stich W.N.L. Him. R. Corbett Crianlarich Hotel.

NEW YEAR MEET.

1933

Crianlarich

30<sup>th</sup> Dec. 1932. Motored to Benmore Farm by Parry & then over Benmore & Stobinian in fair weather, but little snow.

W.N.L.  
L.St.C.B.  
J.M.

31<sup>st</sup> Dec. To Cruach Ardran by west col in cold dull day. Down N.E steep snow to col in tearing gale. Snow & rain on Stob Gardh. Trying to go without compass in 300 yds turned completely round. Very wet going home W.N.L. S.J. J.M.

1<sup>st</sup> Jan. A good day with new snow on tops. Motored to Dalmarly road up N. Ridge of Lui. Some of party up by S. Gardh Ridge & by Central Gully. Down by S.G. Ridge & to car at foot of Coninish Road. W.N.L. J.H. A.H. J.M. J.A. Scott F.M. Shewell.



An Gardhanach & Nevis Gorge.

Also at Hut. Pattulo, Ainslie Sandeman & Pitt.

Saanenmöser 1933.

Left London Friday 20<sup>th</sup> Jan'y. 4 pm. via Calais & by special Rhone Valley train to Montreux. Joan with us also Greta Fleming & Dorothy. Weather unsettled snow very good. Cold & bright for first week, then bad turning to 3 days rain. Then very good to finish. Only new run was the Barwengen-Kalterbrunnen to Oschseite with L.S.C. Amery.



Gumflüh on route to Vledemanette.

Specially good run down to:-  
Lenk from Trutlisberg  
Zweissimmen over Rinderberg  
with Rob. J.  
Vledemanette to Rougemont.



N.L. Hirz H.M.



G. Fleming



Daisy  
(aufond, James)



Greta. Gogo.



at Rougemont



Lunch Hut - Viedemanette.



Lunch under  
Rübli.



Gogo Daisy Joan



Viedemanette  
(Miss McCulloch & Hans)



Mrs Jeffrey Rob. Jeffrey Daisy De Carson



Thomas Arnold Mrs Barron H.M. M.B. Miss Leng Miss M. McGaw  
Group at Kessel Miss McGaw



W.B.S. & M.S.



Trüblisberg Route



A.M. N.L.H. R.J.



De Carson Daisy Wilson Mrs W. Thomas Wahren  
on Curling Rink.



Misses Leng & McGaws  
at Kessel.

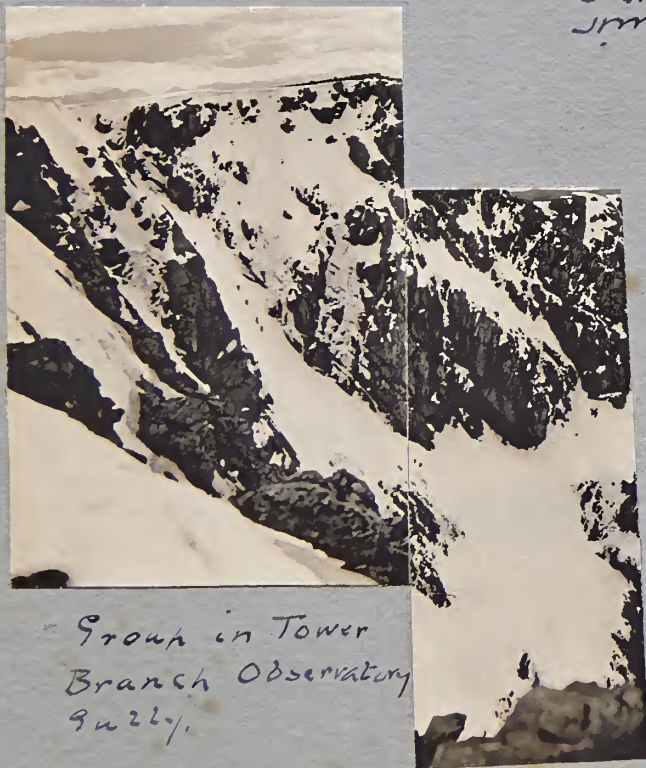


S.J. on Castle Ridge

Easter Meet - Fort William

14<sup>th</sup> April 1933 - To the Hub, C.M. Dearg  
 & by the Arête to Ben Nevis N.L.Hirz  
 R.J.  
 J.M.

15<sup>th</sup> April. Lk Glen Nevis to meet S.J.  
 coming from Corran. Missed each  
 other above Steall. C.E.B.  
 S.J.  
 J.M.



Group in Tower  
 Branch Observatory  
 9/26/33.



P.B.

Killin. 12<sup>th</sup> Mch 1933. On Beinn  
 Ghlas on ski. P.F.C.  
 J.M.

26<sup>th</sup> Mch. Over col N. of B.  
 Ghlas & down far side on ski.  
 Betty Donald  
 Peter Brown  
 J.M.



B.D.

H.M.

P.B.



J.M. on  
 Castle  
 Ridge

16<sup>th</sup> April. Climbed Castle Ridge in  
 brilliant weather. Cinema - quite  
 good. S.J. down to Hub via No. 3 Party

A.H.  
 S.J.  
 M. Mathewson  
 J.M.



Hut & Tower Ridge  
 Colm R. N.H. R.J. H.M. C.E.B.



April 1907.

Ben Nevis from Aonach Mor